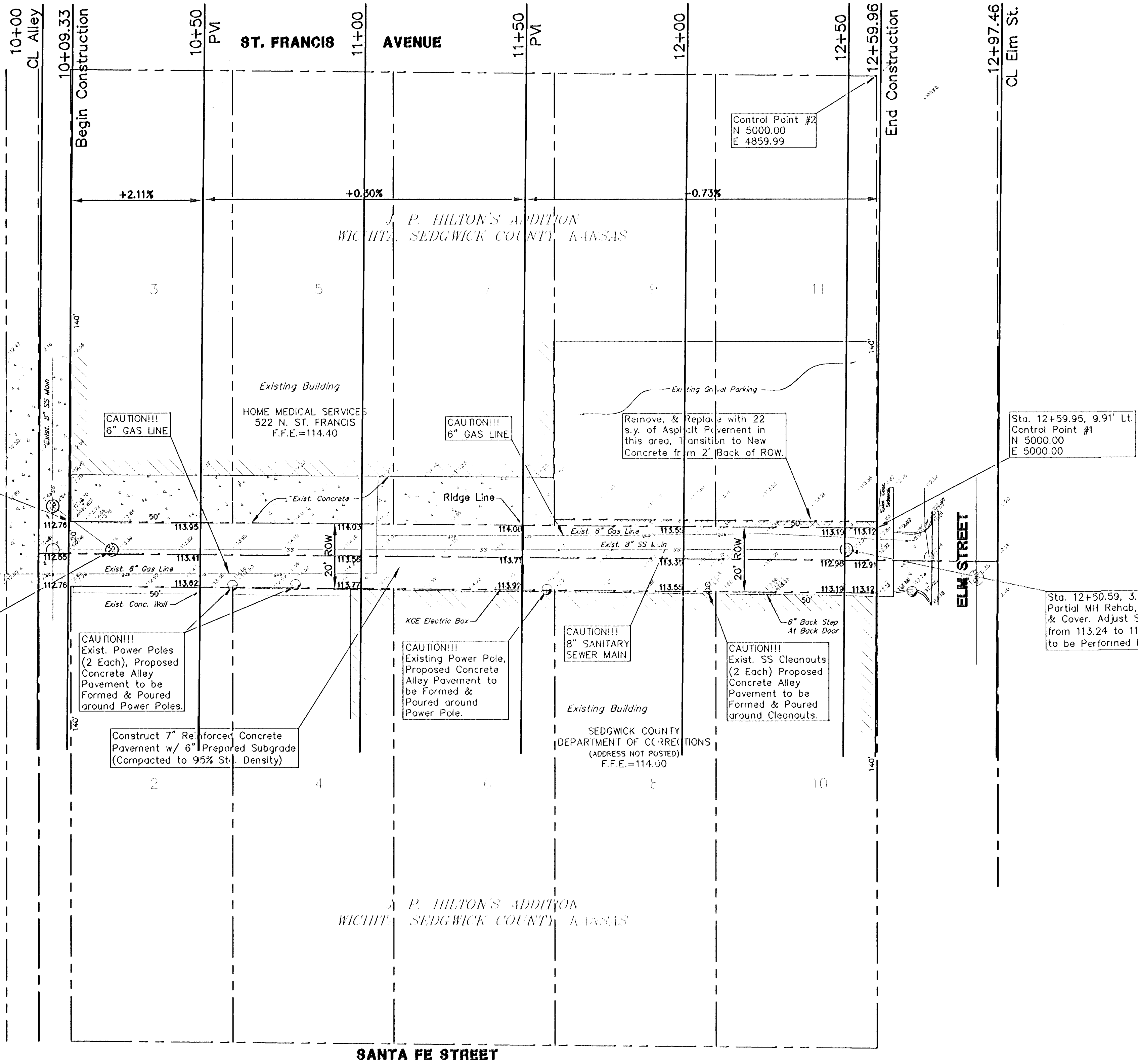


UTILITY LEGEND

	= Catv Box		= Power Pole
	= Fire Hydrant		= Sign
	= Guard Post		= San. Sewer Manhole
	= Guy Anchor		= Storm Sewer Manhole
	= Guy Pole		= Telephone Riser
	= Light Pole		= Water Meter
	= Mailbox		= Water Valve
			= Gas Meter

NOTES:
 *Sta. 10+09.33 to Sta. 11+60.18, Contractor Shall Match Existing Pavement with New Concrete Pavement on West Side.
 *Contractor Shall Maintain Minimum Cross Slope on East 1/2 of Alley and Abutt New Concrete Against Existing Concrete Wall and Building Along the East Side.

SS MH to be Removed as part of 8" SS Reconstruction. New 8" SS Main will extend south into East/West SS Main where new MH will be set. 25 L.F. of angled SS pipe to be abandoned. (Work to be completed by others.)



Sta. 10+10.00, 9.91' Lt. Control Point #3
 N 4750.05
 E 4997.82

Control Point #2
 N 5000.00
 E 4859.99

Sta. 12+59.95, 9.91' Lt. Control Point #1
 N 5000.00
 E 5000.00

Sta. 12+50.59, 3.2' Lt. Partial MH Rehab, New Frame & Cover. Adjust SS MH Top from 113.24 to 113.04. (Work to be performed by Others.)

UTILITIES SHOWN REPRESENT THE BEST INFORMATION AVAILABLE FOR DESIGN. ADDITIONAL UTILITIES MAY BE PRESENT ON THIS PROJECT. THE CONTRACTOR SHALL BE RESPONSIBLE FOR DETERMINING THE EXACT LOCATION, DEPTH AND SIZE OF ALL UNDERGROUND UTILITIES PRIOR TO CONSTRUCTION. THE CONTRACTOR SHALL BE LIABLE FOR ANY DAMAGE CAUSED BY THE FAILURE TO DO SO.

HORIZONTAL CONTROL POINTS

C.P. NO. 1	N 5000.00 E 5000.00	IRON PIN NE COR. LOT 11
C.P. NO. 2	N 5000.00 E 4859.99	IRON PIN NW COR. LOT 11
C.P. NO. 3	N 4750.05 E 4997.82	IRON PIN SE COR. LOT 3

Utilities shown were located by respective owners. Any Utilities not shown are due to no response to Kansas One Call "1-800-DIG-SAFE" Ticket #330319.
 Utility locations shown hereon are based on information received from Kansas One-Call (1-800-DIG-SAFE) identified by Ticket #330319 on September 4, 2001. Before any digging, contractor should verify utility locations by calling 1-800-DIG-SAFE.

BENCHMARK #1:
 Std. Disc at the NE corner of Central and Washington, 25' E. and 79.1' N. of the centerline of both.
 Elev = 111.99(City of Wichita Datum)
BENCHMARK #2:
 "D" chiseled on top of curb at beginning of radius at NW corner of alley entrance.
 Elev = 112.50(City of Wichita Datum)

CITY OF WICHITA PROJECT NO.: 472 83421 (765696)
 BETWEEN ST. FRANCIS & SANTA FE, SOUTH OF ELM
ALLEY PAVING PLAN
 WICHITA, SEDGWICK CO., KANSAS
 CED PROJ. NO.: 20010794
CERTIFIED ENGINEERING DESIGN, P.A.
 810 WEST DOUGLAS, SUITE C
 WICHITA, KANSAS 67203
 PH.(316)262-8808 FAX.(316)262-1669

DESIGNED: HDF	SCALE: 1"=20'	SHEET
DRAWN: CKW	DATE: 8/01	3
CHECKED: HDF	CED FILE: Alley_Base.dwg	TOTAL 4