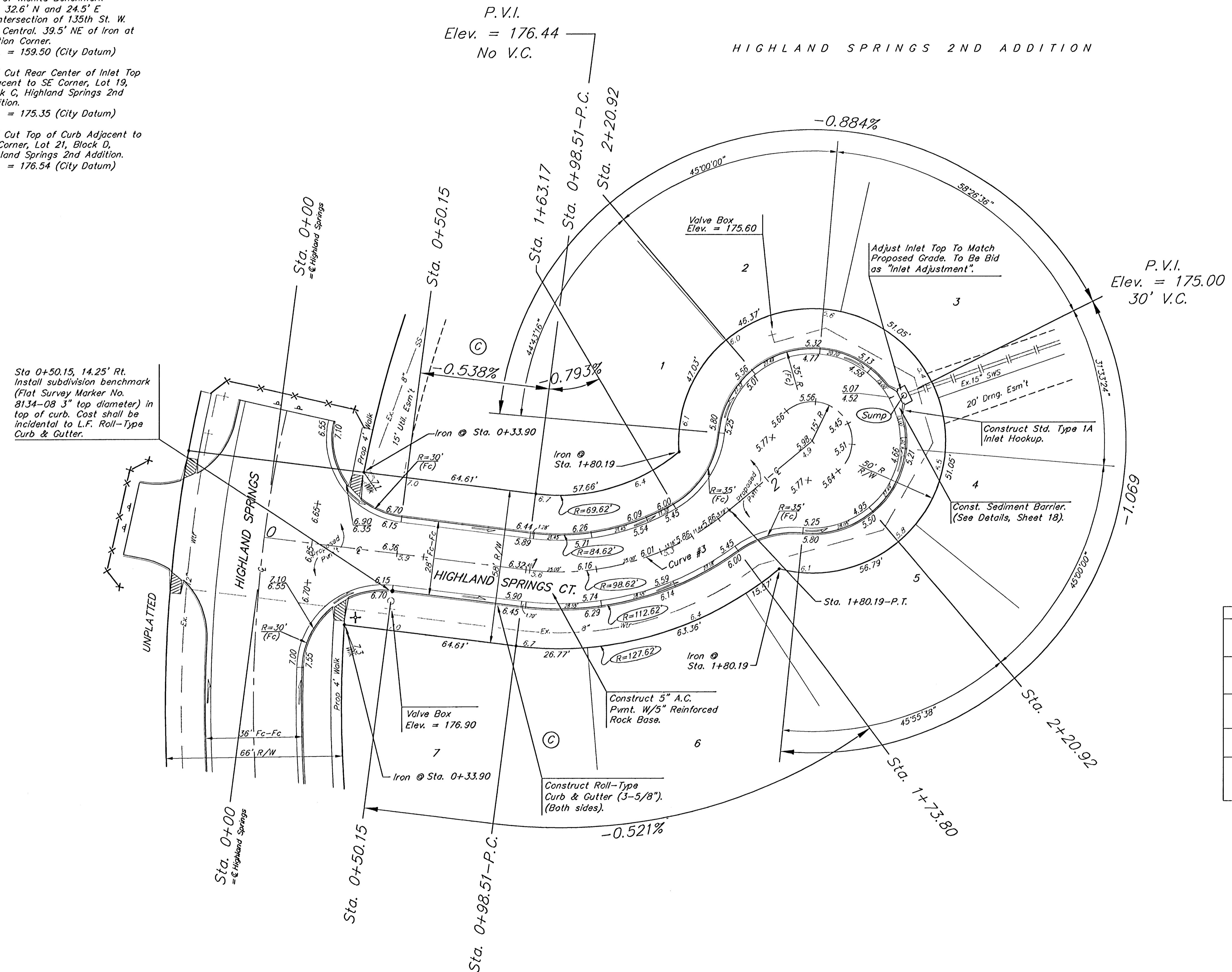
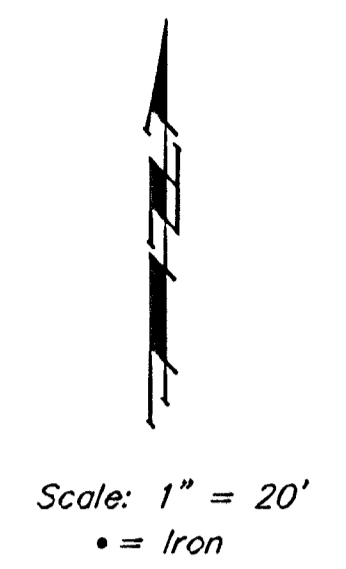


**BENCHMARKS:**  
 City of Wichita Benchmark  
 Disk 32.6' N and 24.5' E  
 of Intersection of 135th St. W.  
 and Central. 39.5' NE of Iron at  
 Section Corner.  
 Elev. = 159.50 (City Datum)

"□" Cut Rear Center of Inlet Top  
 Adjacent to SE Corner, Lot 19,  
 Block C, Highland Springs 2nd  
 Addition.  
 Elev. = 175.35 (City Datum)

"□" Cut Top of Curb Adjacent to  
 SE Corner, Lot 21, Block D,  
 Highland Springs 2nd Addition.  
 Elev. = 176.54 (City Datum)

HIGHLAND SPRINGS 2ND ADDITION



Curve #3  
 Curve Data Based on Centerline  
 Rad. = 98.62' Delta = 47° 27' 27" Tangent = 43.35'  
 Arc = 81.68' L.C. = 79.37' Def/Ft. = 17.43052 Min.

Station	Arc	FACE CHORD LENGTHS		Defl.	T. Defl.
		B' Lt.	B' Rt.		
0+98.51	-	-	-	0°00'00"	0°00'00"
1+00.00	1.49'	1.16'	1.82'	0°25'58"	0°25'58"
1+25.00	25.00'	19.37'	30.50'	7°15'46"	7°41'44"
1+50.00	25.00'	19.37'	30.50'	7°15'46"	14°57'30"
1+63.17	13.17'	10.23'	16.10'	3°49'33"	18°47'03"
1+73.80	10.63'	8.26'	13.00'	3°05'18"	21°52'21"
1+75.00	1.20'	0.93'	1.47'	0°20'55"	22°13'16"
1+80.19	5.19'	4.03'	6.35'	1°30'28"	23°43'44"

Subdivision Bench Marks

Street & Station	Location Description	Elevation
Highland Springs Ct. 0+50.15, 14.25' Rt.	Adjacent to Fire Hydrant at east end of South Curb return at Highland Springs & Highland Springs Ct. (Lots 1-7, Block C).	
Highland Springs Ct. 0+48.00, 14.25' Rt.	Adjacent to Fire Hydrant at North end of Southeast curb return at Highland Springs & Highland Springs Ct. (Lots 8-19, Block C).	
Remington Lane 1+81.34, 17.25' Rt.	Adjacent to Fire Hydrant at west end of Southwest curb return at Remington Lane & Bluegrass.	
Bluegrass Ct. 3+45.67, 14.25' Lt.	Adjacent to Fire Hydrant between on Lot 19-20, Block F	
Highland Springs 6+48.61, 18.25' Rt.	Adjacent to Fire Hydrant in top of curb near Southwest curb inlet adjacent to common lot line of Lots 19, 20, Block C, Highland Springs 2nd Addition.	

Sta 0+50.15, 14.25' Rt.  
 Install subdivision benchmark  
 (Flat Survey Marker No.  
 8134-08 3" top diameter) in  
 top of curb. Cost shall be  
 incidental to L.F. Roll-Type  
 Curb & Gutter.

Roll type curb & gutter to  
 be constructed on the pavement  
 on this sheet.  
 Top of curb elevation are given  
 for full height curb.

HIGHLAND SPRINGS 2ND ADDITION - PHASE II  
**HIGHLAND SPRINGS CT.**  
 LOT 1-7, BLOCK C

**BAUGHMAN COMPANY P.A.**  
 ENGINEERING, SURVEYING, & PLANNING  
 316-262-7271 • 315 ELLIS • WICHITA, KANSAS 67211

PROJECT NUMBER  
**472-83143**

DESIGN: BP/IMG DRAWN: CNX APPROVED: DATE: 2-13-02 SCALE: Noted SHEET: **9** OF: **32**