

BENCHMARKS:
 R.R. Spike in N. Side of Power Pole
 780' E. of C 151st. W. & 60' N.
 of Section Line on Kellogg.
 Elev. = 202.07 (City Datum)

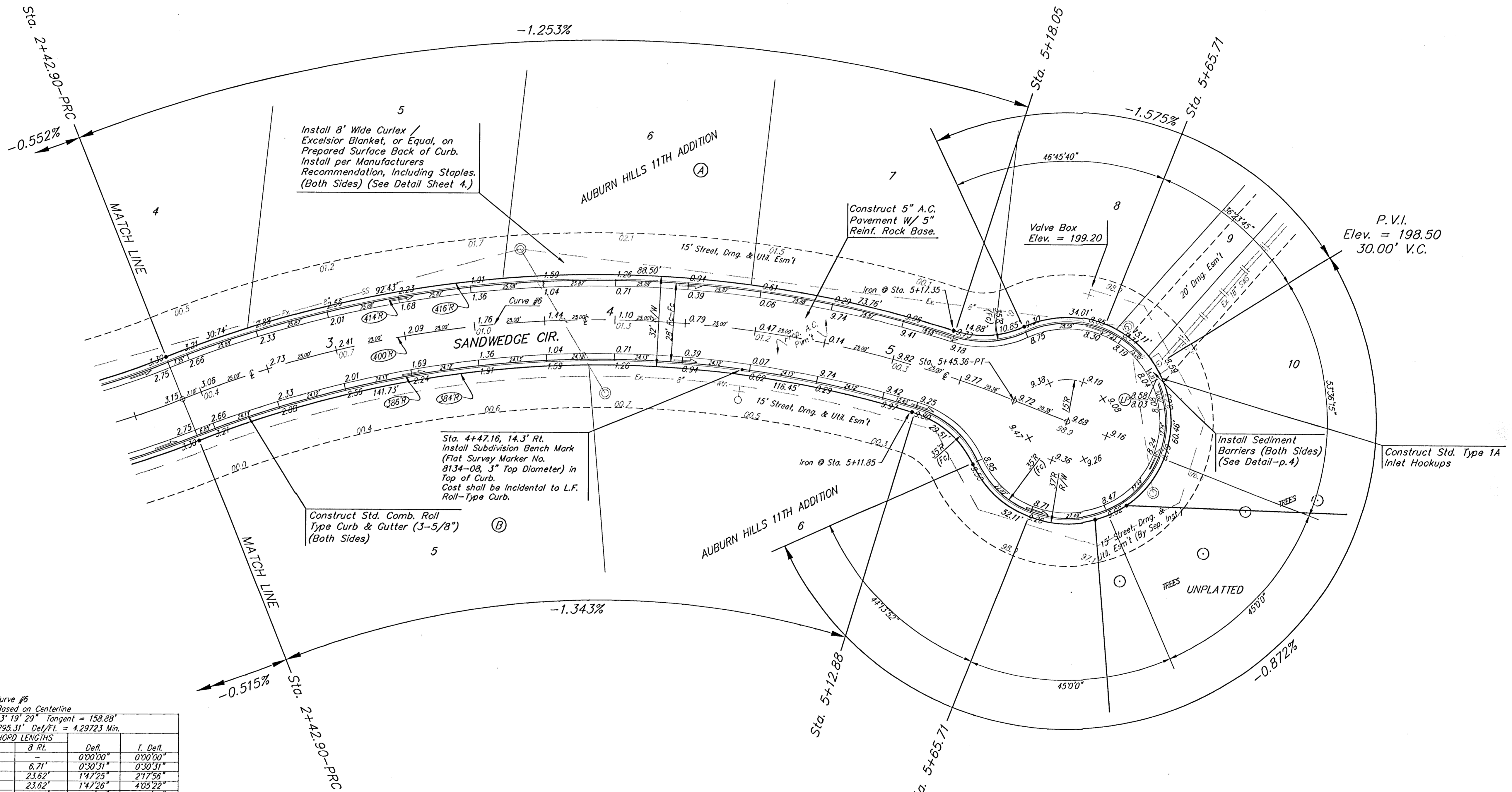
R.R. Spike in Power Pole 493' N. &
 30' E. of Section Corner @ 151st. W.
 & Kellogg, adjacent to S.S. Lift Station.
 Elev. = 207.28 (City Datum)

Top of 1" Iron 12" Deep, W1/4 Cor.,
 Sec. 26, Twp. 27-S, R-2-W
 Elev. = 209.13 (City Datum)

"□" cut on Top of Curb Adjacent to
 Common Lot Line of Lots 16 & 17,
 Block B, Auburn Hills 5th Addition
 Elev. = 202.65 (City Datum)

P.V.I.
 Elev. = 203.30
 NO V.C.

Scale:
 1" = 20'
 • = Iron



Curve #6
 Curve Data Based on Centerline
 Rad. = 400' Delta = 43° 19' 29" Tangent = 158.88'
 Arc = 302.46' L.C. = 295.31' Del./Pt. = 4.29723 Min.

Station	Arc	FACE CHORD LENGTHS		Defn.	T. Defn.
		8 Lt.	8 Rt.		
2+42.90	-	-	-	000'00"	000'00"
2+50.00	7.10'	7.49'	8.71'	030'31"	030'31"
2+75.00	25.00'	26.37'	23.62'	147'26"	217'56"
3+00.00	25.00'	26.37'	23.62'	147'26"	405'22"
3+25.00	25.00'	26.37'	23.62'	147'26"	592'48"
3+50.00	25.00'	26.37'	23.62'	147'26"	780'14"
3+75.00	25.00'	26.37'	23.62'	147'26"	967'40"
4+00.00	25.00'	26.37'	23.62'	147'26"	1155'06"
4+25.00	25.00'	26.37'	23.62'	147'26"	1342'32"
4+50.00	25.00'	26.37'	23.62'	147'26"	1529'58"
4+75.00	25.00'	26.37'	23.62'	147'26"	1717'24"
5+00.00	25.00'	26.37'	23.62'	147'26"	1904'50"
5+12.88	12.88'	13.59'	12.17'	055'21"	1920'10"
5+18.05	5.17'	5.45'	-	022'13"	1942'23"
5+25.00	6.95'	-	-	029'52"	2012'15"
5+45.36	20.36'	-	-	127'30"	2139'45"

P.V.I.
 Elev. = 203.30
 NO V.C.

Street & Station	Subdivision Bench Mark Location Description	Elevation
Sandwedge Cir 4+47.16, 14.3' Rt.	In Top of Curb Adjacent to Fire Hydrant & Lot 6, Block B Sandwedge Cir (Lots 1-10, A; Lots 1-6, B)	

NOTE: ROLL TYPE CURB & GUTTER TO BE CONSTRUCTED ON THE PAVEMENT SHOWN ON THIS SHEET. TOP OF CURB ELEVATIONS ARE GIVEN FOR FULL HEIGHT CURB.

AUBURN HILLS 11TH ADDITION
SANDWEDGE CIR.
 STA. 2+42.90 TO STA. 5+65.71

BAUGHMAN COMPANY P.A.
 ENGINEERING, SURVEYING, & PLANNING

316-282-7271 • 315 ELLIS • WICHITA, KANSAS

PROJECT NUMBER
472-83403

DESIGN: BLP DRAWN: DC APPROVED: DATE: 08-01 SCALE: NOTED

SHEET **7** OF **17**