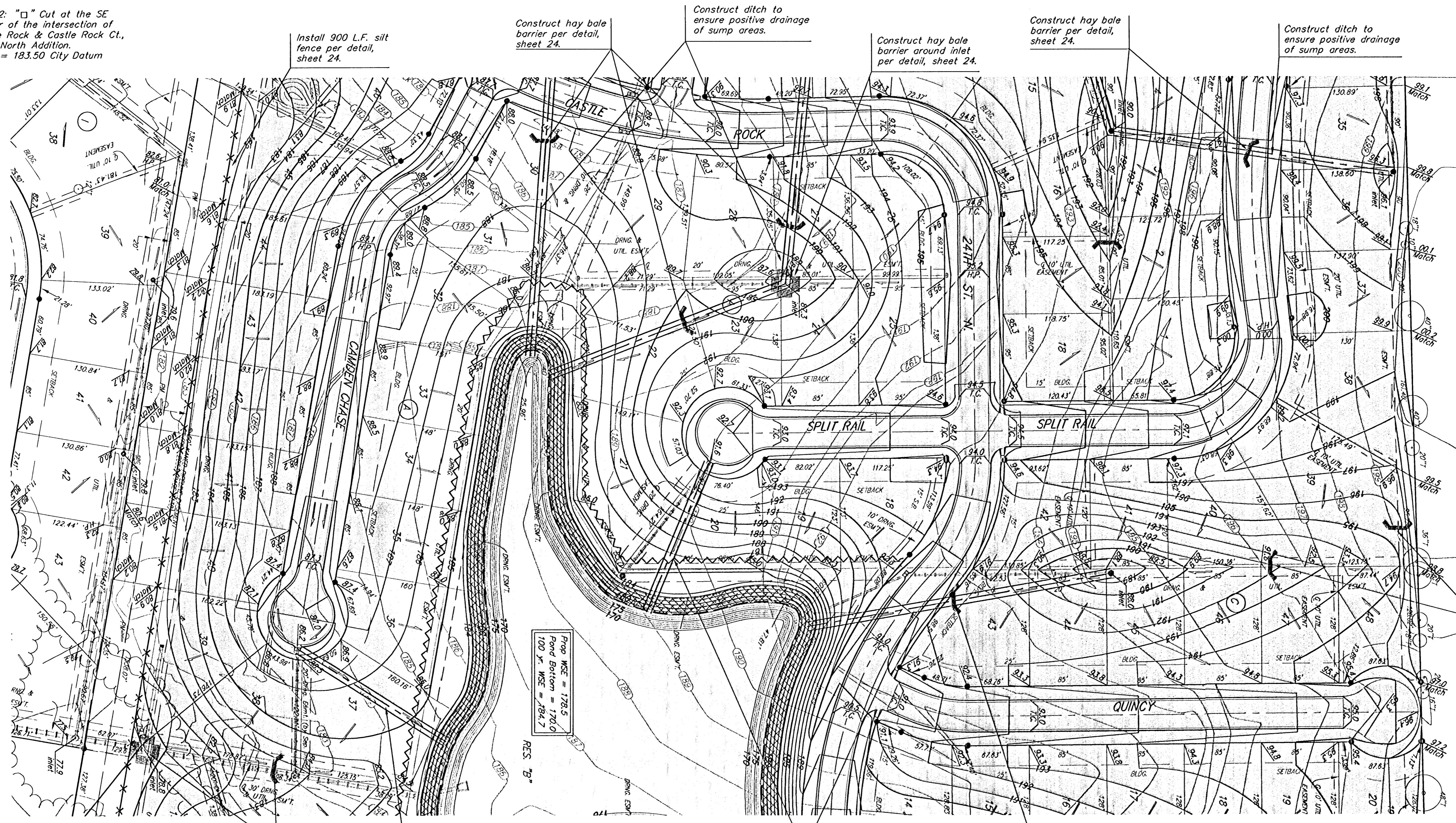


BENCHMARK:  
 BM #1: "□" Cut in middle of  
 N headwall of RCBC on 21st  
 St. North. 1004.3' W & 22.1'  
 N of SE Cor., SE1/4, Sec. 2,  
 T-27-S, R-2-E.  
 Elev. = 173.23 City Datum

BM #2: "□" Cut at the SE  
 corner of the intersection of  
 Castle Rock & Castle Rock Ct.,  
 Krug North Addition.  
 Elev. = 183.50 City Datum



Scale: 1" = 60'



**EROSION CONTROL PLAN LEGEND**  
(Installation Details Found in the S&P Plan)

- LIGHT STONE RIP-RAP
- DROP INLET PROTECTION
- CURB INLET PROTECTION
- STRAW BALE BARRIERS
- SILT FENCING
- EARTH DIKES

NO SCALE

EROSION CONTROL MEASURE	UNITS	QUANTITY
SILT FENCE	L.F.	3965
RIPRAP	S.Y.	SEE PLAN
DROP INLET BARRIER	EA.	8
CURB INLET BARRIER	EA.	0
STRAW BALE DITCH CHECK	EA.	32
CUTT-OFF TRENCH	L.F.	1825
CURLEX	S.Y.	0
POND E.C. BLANKET	S.Y.	3455
Construction Entrance	EA.	1

QUANTITIES ARE FOR INFORMATION ONLY!

Construct hay bale barrier per detail, sheet 24.

Construct ditch to ensure positive drainage of sump areas.

Construct hay bale barrier around inlet per detail, sheet 24.

Construct hay bale barrier per detail, sheet 24.

Construct ditch to ensure positive drainage of sump areas.

Install 900 L.F. silt fence per detail, sheet 24.

Pond MSE = 178.5  
 Pond Bottom = 170.0  
 100 Yr. MSE = 184.7

Construct hay bale barrier per detail, sheet 24.

Construct ditch to ensure positive drainage of sump areas.

Construct ditch to ensure positive drainage of sump areas.

Construct hay bale barrier per detail, sheet 24.

—(185)— Existing Grade  
 —185— Proposed Grade  
 X X X X Silt Fence

Area to be graded

Remove trees only as necessary for construction and only with permission of Developer or Baughman Co. Cost of removal to be incidental to lump sum bid item "Site Clearing & Restoration".

**Baughman** KRUG NORTH 2ND/KRUG NORTH ADD. - PH. II  
**MASS GRADING PLAN**  
 WICHITA, KANSAS

Baughman Company, P.A. 315 Lila St. Wichita, KS 67211 P 316-262-7171 F 316-262-6149  
 ENGINEERING | SURVEYING | PLANNING | LANDSCAPE ARCHITECTURE

PROJECT NUMBER 468-83793	DESIGN TMS
REVISIONS:	DRAWN TMS
	APPROVED DATE 07/05
	SCALE Noted
	SHEET <b>3 OF 28</b>

KrugNorth2nd\Phase1\Mass2 05-04-E228