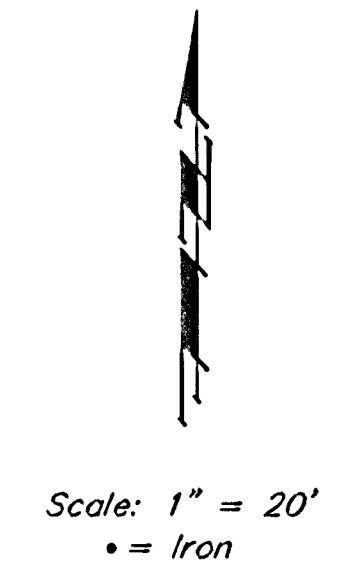
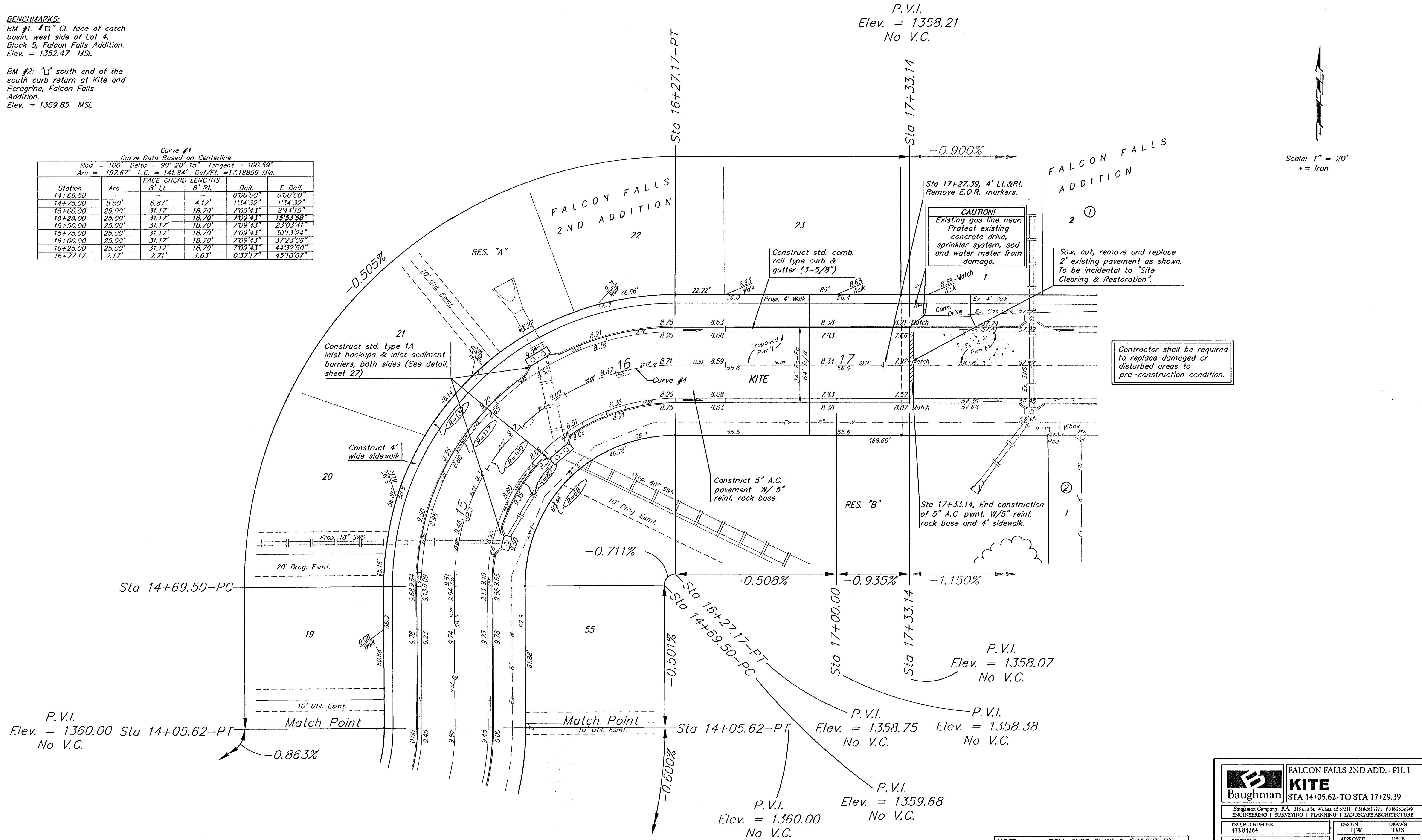


BENCHMARKS:
 BM #1: "□" CL face of catch basin, west side of Lot 4, Block 5, Falcon Falls Addition. Elev. = 1352.47 MSL

BM #2: "□" south end of the south curb return at Kite and Peregrine, Falcon Falls Addition. Elev. = 1359.85 MSL

Curve #4
 Curve Data Based on Centerline
 Rad. = 100' Delta = 90° 20' 15" Tangent = 100.59'
 Arc = 157.67' L.C. = 141.84' Del/Pt. = 17,18859 Min.

Station	Arc	FACE CHORD LENGTHS		Defl.	T. Defl.
		8' Lt.	8' Rt.		
14+69.50	-	-	-	0°00'00"	0°00'00"
14+75.00	5.50'	6.87'	4.12'	1°34'32"	1°34'32"
15+00.00	25.00'	31.17'	18.70'	7°09'43"	8°44'15"
15+25.00	25.00'	31.17'	18.70'	7°09'43"	13°53'58"
15+50.00	25.00'	31.17'	18.70'	7°09'43"	23°03'41"
15+75.00	25.00'	31.17'	18.70'	7°09'43"	30°73'24"
16+00.00	25.00'	31.17'	18.70'	7°09'43"	37°23'06"
16+25.00	25.00'	31.17'	18.70'	7°09'43"	44°32'50"
16+27.17	2.17'	2.71'	1.63'	0°37'17"	49°10'07"



NOTE: ROLL TYPE CURB & GUTTER TO BE CONSTRUCTED ON THE PAVEMENT SHOWN ON THIS SHEET. TOP OF CURB ELEVATIONS ARE GIVEN FOR FULL HEIGHT CURB.

	FALCON FALLS 2ND ADD. - PH. I	
	KITE STA 14+05.62-TO STA 17+29.39	
<small>Baughman Company, P.A. 315 Ellis St. Wichita, KS 67211 F3162627771 F3162620149 ENGINEERING SURVEYING PLANNING LANDSCAPE ARCHITECTURE</small>		
PROJECT NUMBER 472-84264	DESIGN TJW	DRAWN TMS
REVISIONS:	APPROVED AEG	DATE 01/06
SCALE Note:		SHEET 9 OF 44
<small>Falcon Falls 2nd PH I Sta 4</small>		<small>05-10-E376</small>