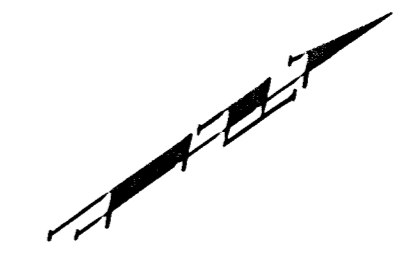
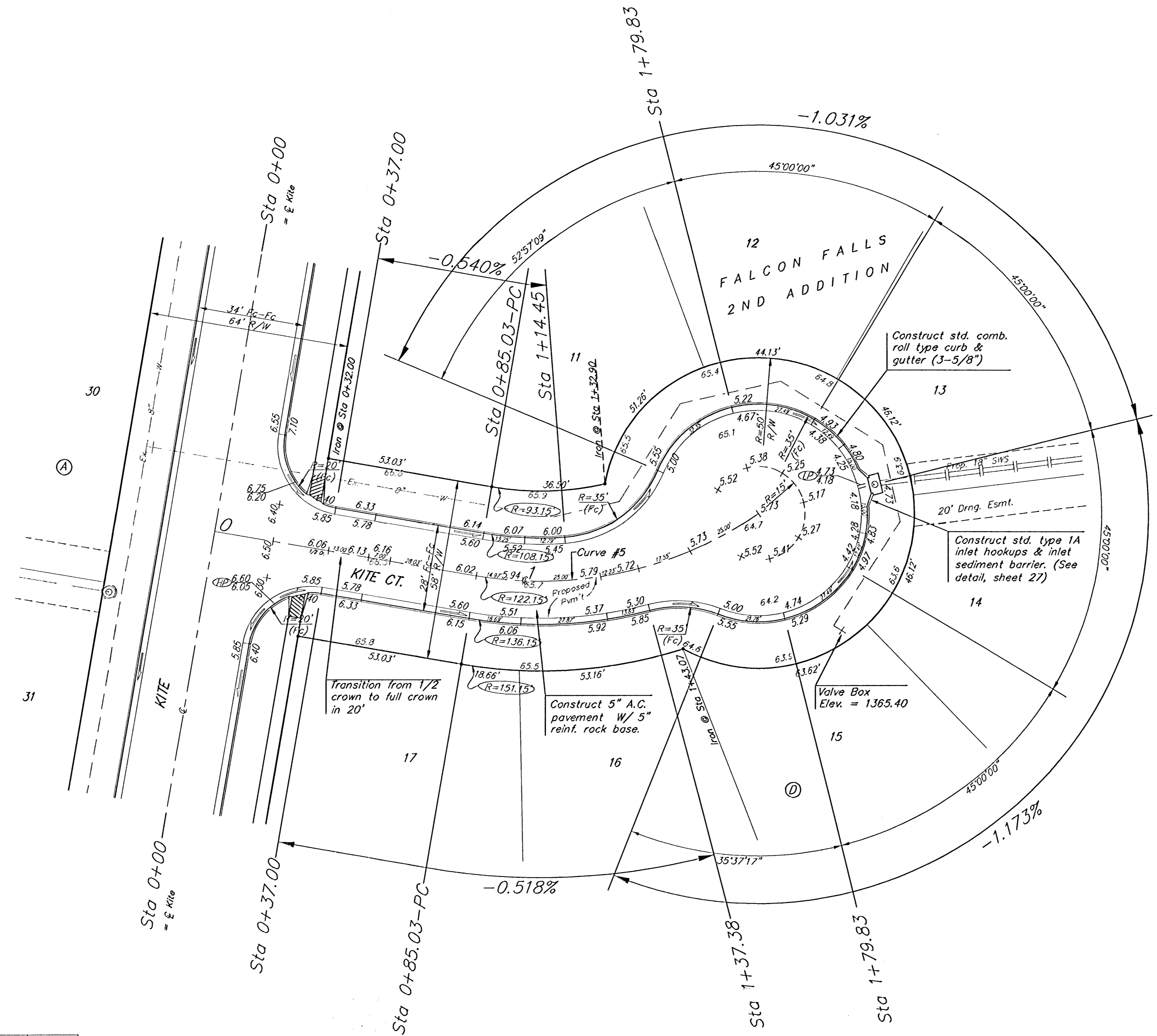


BENCHMARKS:
 BM #1: "□" CL face of catch basin, west side of Lot 4, Block 5, Falcon Falls Addition. Elev. = 1352.47 MSL

BM #2: "□" south end of the south curb return at Kite and Peregrine, Falcon Falls Addition. Elev. = 1359.85 MSL



Scale: 1" = 20'
 • = Iron



P.V.I.
 Elev. = 1364.65
 30' V.C.

Curve #5
 Curve Data Based on Centerline
 Rad. = 122.15' Delta = 44° 27' 52" Tangent = 49.93'
 Arc = 94.8' L.C. = 92.43' Def/Ft. = 14.07103 Min.

Station	Arc	FACE CHORD LENGTHS		Defl.	T. Defl.
		8' Lt.	8' Rt.		
0+85.03	-	-	-	0°00'00"	0°00'00"
1+00.00	14.97'	12.27'	17.65'	3°30'38"	3°30'38"
1+14.45	14.45'	11.84'	17.04'	3°23'19"	6°53'58"
1+29.00	10.55'	8.65'	12.45'	2°28'27"	9°22'25"
1+37.38	12.38'	10.15'	14.60'	2°54'12"	12°16'37"
1+79.83	42.45'	34.63'	49.84'	9°57'19"	22°13'56"

NOTE: ROLL TYPE CURB & GUTTER TO BE CONSTRUCTED ON THE PAVEMENT SHOWN ON THIS SHEET. TOP OF CURB ELEVATIONS ARE GIVEN FOR FULL HEIGHT CURB.

	FALCON FALLS 2ND ADD. - PH. I	
	KITE CT. LOTS 11-17, BLOCK D STA 0+00 TO STA 1+79.83	
<small>Baughman Company, P.A. 315 Ellis St. Wilkes Barre, PA 18201 P 717-326-1419 ENGINEERING SURVEYING PLANNING LANDSCAPE ARCHITECTURE</small>		
PROJECT NUMBER 472-84264	DESIGN TJW	DRAWN TMS
REVISIONS:	APPROVED AEG	DATE 01/06
SCALE Noted		SHEET 11 OF 44
<small>Falcon Falls 2nd PH I Sub</small>		<small>05-10-E376</small>