

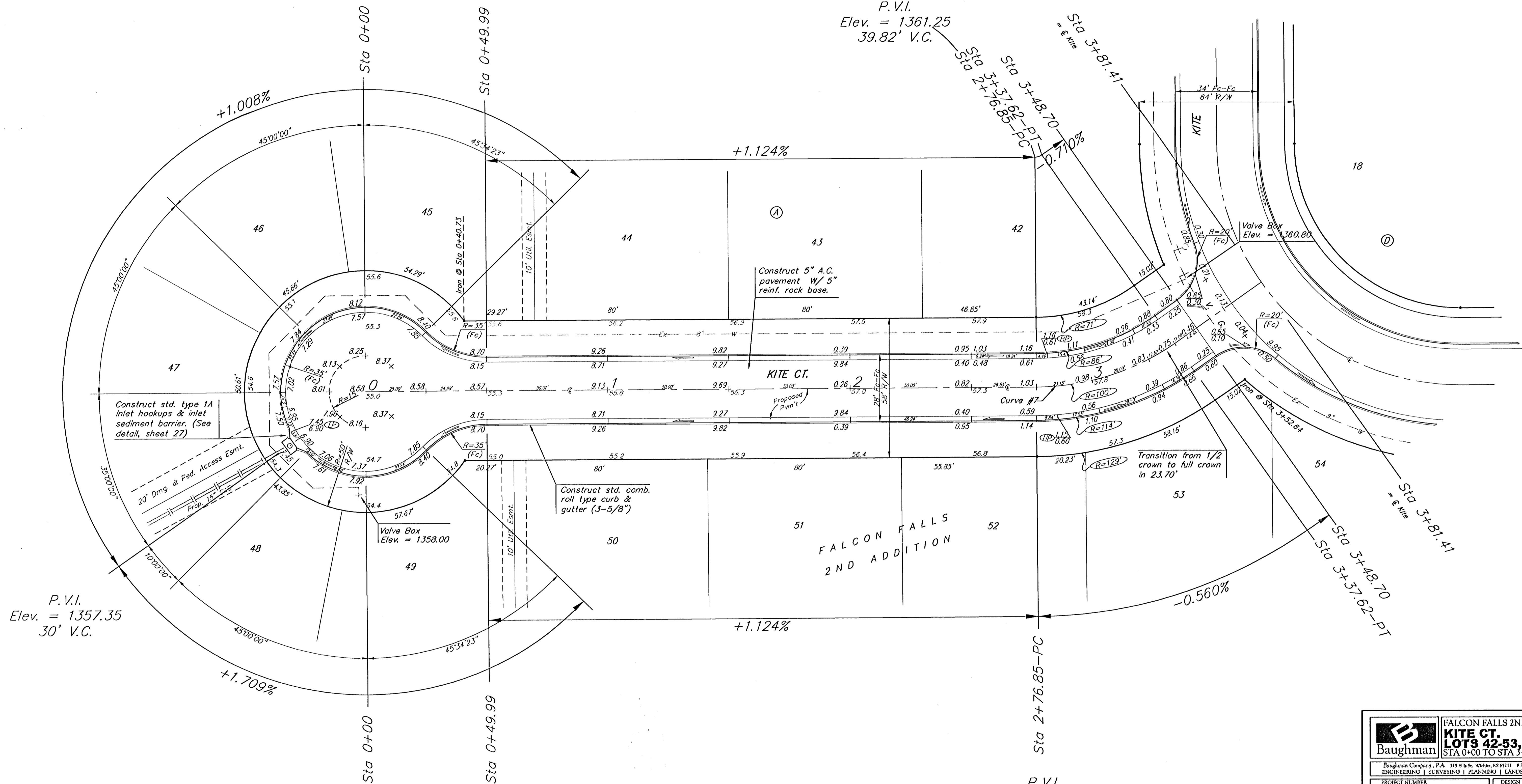
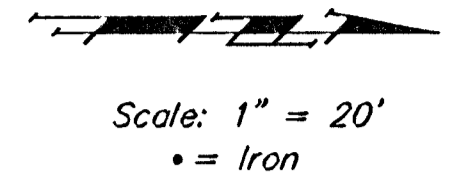
**BENCHMARKS:**

BM #1: "□" CL face of catch basin, west side of Lot 4, Block 5, Falcon Falls Addition. Elev. = 1352.47 MSL

BM #2: "□" south end of the south curb return at Kite and Peregrine, Falcon Falls Addition. Elev. = 1359.85 MSL

Curve #7  
Curve Data Based on Centerline  
Rad. = 100' Delta = 34° 49' 00" Tangent = 31.35'  
Arc = 60.77' L.C. = 59.84' Def/Fl. = 17.18776 Min.

Station	Arc	FACE CHORD LENGTHS		Defl.	T. Defl.
		B' Lt.	B' Rt.		
2+76.85	-	-	-	0'00"00"	0'00"00"
3+00.00	23.15'	18.02'	28.18'	6'37"54"	6'37"54"
3+25.00	25.00'	19.45'	30.42'	7'09"41"	13'47"35"
3+37.62	12.62'	9.84'	15.39'	3'36"54"	17'24"30"



P.V.I.  
Elev. = 1357.35  
30' V.C.

P.V.I.  
Elev. = 1361.25  
39.82' V.C.

P.V.I.  
Elev. = 1361.25  
52.78' V.C.

NOTE: ROLL TYPE CURB & GUTTER TO BE CONSTRUCTED ON THE PAVEMENT SHOWN ON THIS SHEET. TOP OF CURB ELEVATIONS ARE GIVEN FOR FULL HEIGHT CURB.

	FALCON FALLS 2ND ADD. - PH. I <b>KITE CT.</b> LOTS 42-53, BLOCK A STA 0+00 TO STA 3+81.41	
	Baughman Company, P.A. 315 Ellis St. Wichita, KS 67211 F 3162627711 F 3162620149 ENGINEERING   SURVEYING   PLANNING   LANDSCAPE ARCHITECTURE	
PROJECT NUMBER 472-84264	DESIGN TJW	DRAWN TMS
REVISIONS:	APPROVED AEG	DATE 01/06
SCALE Noted		SHEET <b>13 OF 44</b>
Falcon Falls 2nd PH 1/28		05-10-E376