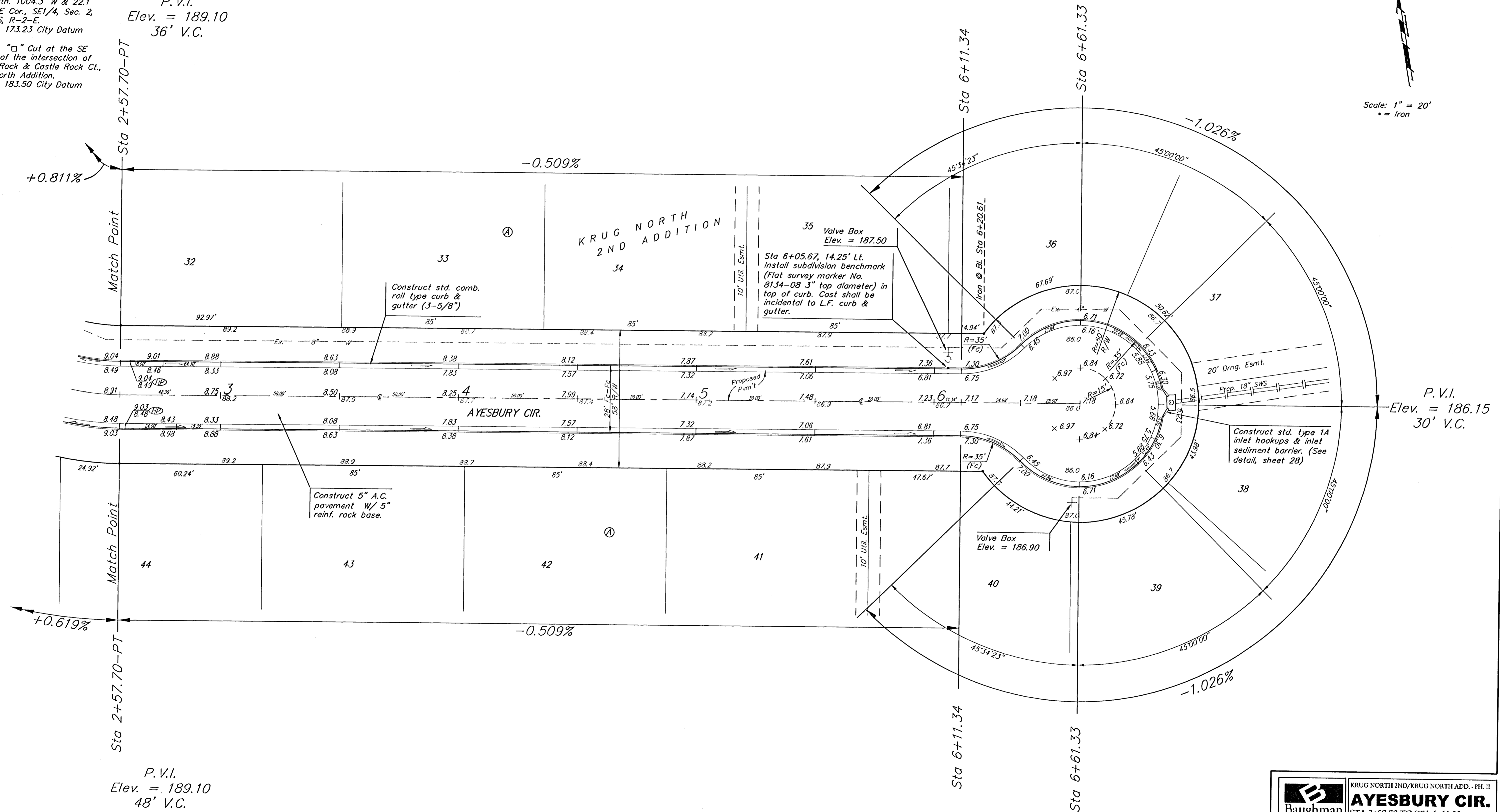


BENCHMARK:
 BM #1: "□" Cut in middle of
 N headwall of RCBC on 21st
 St. North, 1004.3' W & 22.1'
 N of SE Cor., SE 1/4, Sec. 2,
 T-27-S, R-2-E.
 Elev. = 173.23 City Datum

BM #2: "□" Cut at the SE
 corner of the intersection of
 Castle Rock & Castle Rock Ct.,
 Krug North Addition.
 Elev. = 183.50 City Datum

P.V.I.
 Elev. = 189.10
 36' V.C.

Scale: 1" = 20'
 • = Iron



P.V.I.
 Elev. = 189.10
 48' V.C.

NOTE: ROLL TYPE CURB & GUTTER TO BE CONSTRUCTED ON THE PAVEMENT SHOWN ON THIS SHEET. TOP OF CURB ELEVATIONS ARE GIVEN FOR FULL HEIGHT CURB.

	KRUG NORTH 2ND/KRUG NORTH ADD. - PH. II AYESBURY CIR. STA 2+57.70 TO STA 6+61.33
	<small>Baughman Company, P.A. 315 Ella St. Wichita, KS 67211 P 316-262-7271 F 316-262-0149 ENGINEERING SURVEYING PLANNING LANDSCAPE ARCHITECTURE</small>
PROJECT NUMBER 472-83974	DESIGN TMS
REVISIONS	APPROVED DATE 09/05
	SCALE Noted
	SHEET 15 OF 44
<small>KrugNorth2ndPhase1Set10</small>	<small>05-04-E231</small>