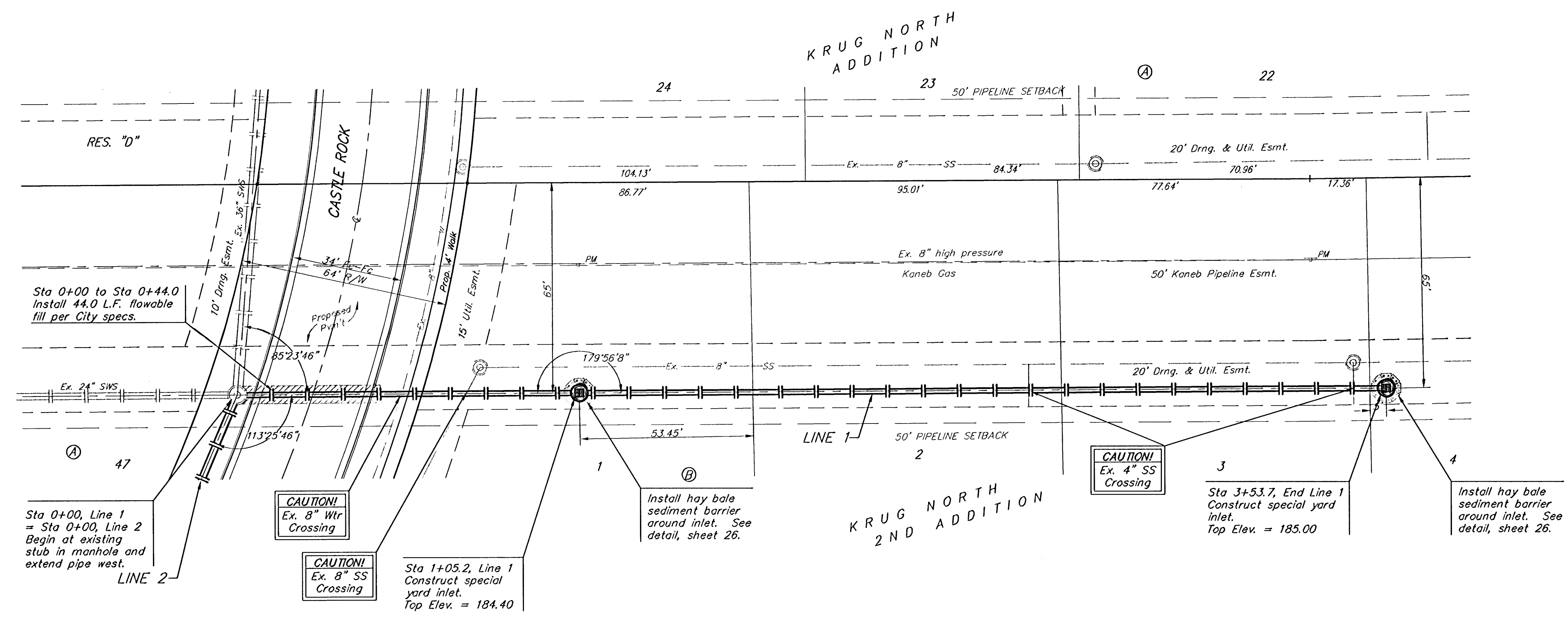
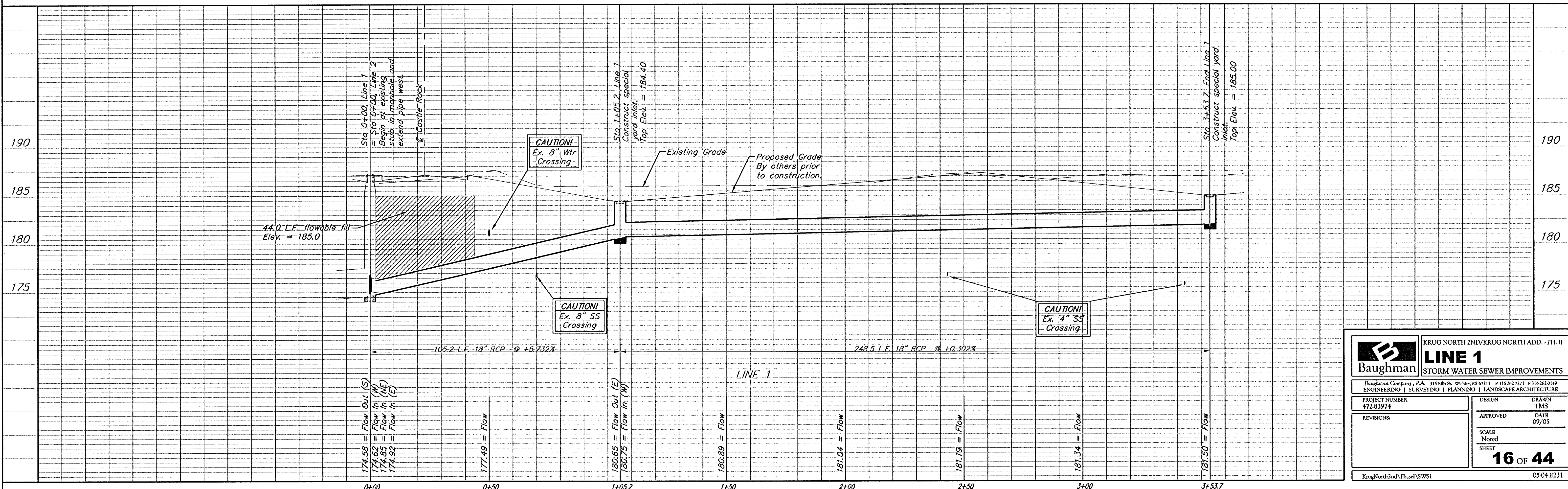


BENCHMARK:  
 BM #1: "□" Cut in middle of N headwall of RCBC on 21st St. North, 1004.3' W & 22.1' N of SE Cor., SE 1/4, Sec. 2, T-27-S, R-2-E. Elev. = 173.23 City Datum

BM #2: "□" Cut at the SE corner of the intersection of Castle Rock & Castle Rock Ct., Krug North Addition. Elev. = 183.50 City Datum



Scale: 1" = 20' Horizontal  
 1" = 5' Vertical  
 • = Iron



<b>Baughman</b>		KRUG NORTH 2ND/KRUG NORTH ADD. - PH. II	
ENGINEERING   SURVEYING   PLANNING   LANDSCAPE ARCHITECTURE		<b>LINE 1</b> STORM WATER SEWER IMPROVEMENTS	
PROJECT NUMBER 472-83974	DESIGN TMS	DRAWN TMS	DATE 09/05
REVISIONS:	APPROVED	SCALE None	SHEET 16 OF 44
KrugNorth2ndPhase1/SWS1		0504E231	