

BENCHMARK:
 BM #1: "□" Cut in middle of N headwall of RCBC on 21st St. North, 1004.3' W & 22.1' N of SE Cor., SE1/4, Sec. 2, T-27-S, R-2-E. Elev. = 173.23 City Datum

BM #2: "□" Cut at the SE corner of the intersection of Castle Rock & Castle Rock Ct., Krug North Addition. Elev. = 183.50 City Datum

EASTSIDE COMMUNITY CHURCH 2ND ADDITION

KRUG NORTH ADDITION

Scale: 1" = 20' Horizontal
 1" = 5' Vertical
 • = Iron

Sta 0+00, Line 7
 Core into existing manhole and extend pipe west. Seal & grout around pipe. Reshape invert if necessary. Cost of coring, sealing, grouting & reshaping to be incidental to pipe cost.

Install S.S. Riser #1
 8"x4" Tee, Approx. Length of 4" Pipe 7.0' Vertical 13.0' Horizontal.

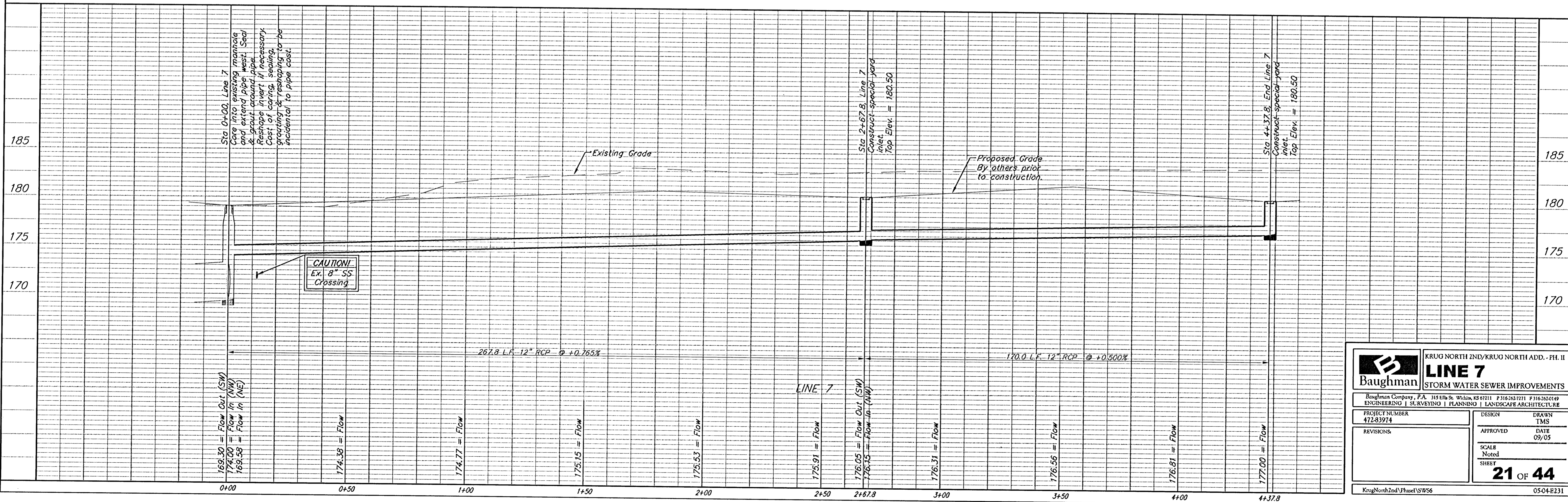
Install S.S. Riser #2
 8"x4" Tee, Approx. Length of 4" Pipe 7.0' Vertical 13.0' Horizontal.

Sta 2+67.8, Line 7
 Construct special yard inlet. Top Elev. = 180.50

Install S.S. Risers #3 & #4
 8"x4" Tee's. Approximate Length of 4" Pipe 6.5' Vertical 13.0' Horizontal.

Sta 4+37.8, End Line 7
 Construct special yard inlet. Top Elev. = 180.50

All Cost Associated With S.S. Risers Shall Be Incidental to Bid Item "SWS Pipe RCP 12"



		KRUG NORTH 2ND/KRUG NORTH ADD. - PH. II LINE 7 STORM WATER SEWER IMPROVEMENTS	
<small>Baughman Company, P.A. 315 Ellis St. Wichita, KS 67211 P 316.262.7711 F 316.262.0149 ENGINEERING SURVEYING PLANNING LANDSCAPE ARCHITECTURE</small>			
PROJECT NUMBER 472-83974	DESIGN TMS	DRAWN TMS	DATE 09/05
REVISIONS:	APPROVED	SCALE Noted	SHEET 21 OF 44
<small>KrugNorth2ndPhase1/SWS6</small>		<small>0504-E231</small>	