

FINAL PLAT

HAWTHORNE THIRD ADDITION

AN ADDITION TO WICHITA, SEDGWICK COUNTY, KANSAS

BENCH MARKS

BM #31 "T" post 41" x 4" SE of SE Cor. Williamsgate and Bottom end lying 27' 9" / S. of the North line of Lot 22, Blk. 1.
Elev. = 184.243NGVD
17634 City datum

BM #36 "T" post 5 1/2" x N. & 5 1/2" x W. of NW. Cor. Rosemont and Camden Chase - in Ret. "C".
Elev. = 184.63 NGVD
18123 City datum

NE. Cor., SW 1/4, Sec. 2,
127S, R2E, 6th P.M.
Find 3/8" Rebar w/ T.I.S.
Bridges Id. cap in Contc.

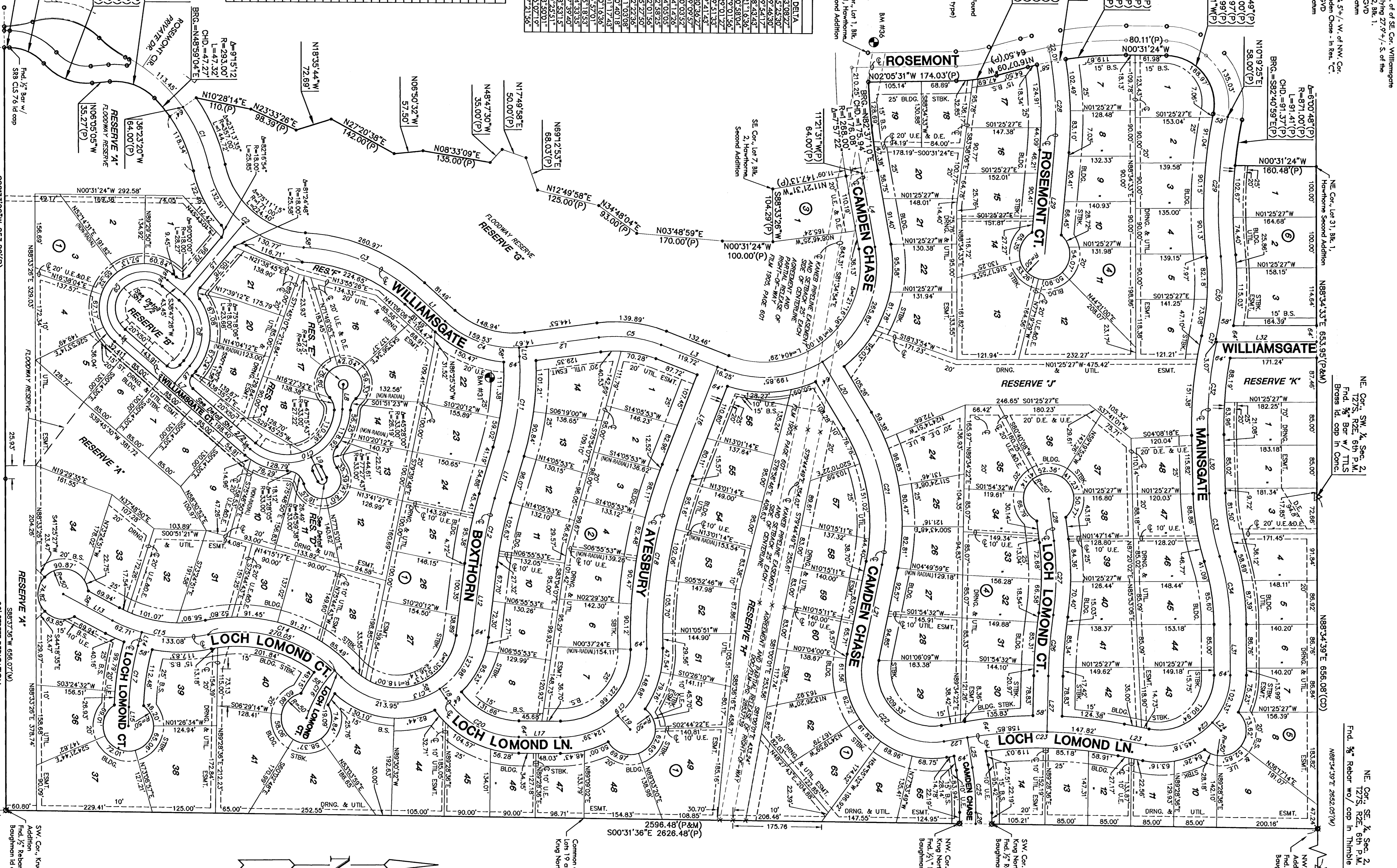
NE. Cor., SE 1/4, Sec. 2,
127S, R2E, 6th P.M.
Find 3/8" Rebar w/ cap in Thimble
18874.19' E 2852.05' W

- #### LEGEND
- △ Section Corner Monument Found
 - ⊠ Found Survey Monument (see omitted caption for type)
 - Found 5/8" Rebar w/ MKCC CLS 39 Id. Cap
 - Set 5/8" Rebar w/ MKCC CLS 39 Id. Cap
 - X = Middle
 - U.E. = Utility Easement
 - (D) = Deeded
 - (P) = Partial
 - (H) = Homestead
 - (M) = Measured

CURVE	LENGTH	RADIUS	DELTA
C1	31.26	325.00	23.0827
C2	268.29	200.00	75.2930
C3	242.97	350.00	97.4630
C4	174.20	200.00	49.5417
C5	128.35	250.00	38.4426
C6	158.27	100.00	91.5806
C7	324.30	72.42	179.0156
C8	242.71	110.00	190.1277
C9	190.64	550.00	97.5138
C10	333.39	800.00	97.5138
C11	388.12	350.00	80.8227
C12	192.79	250.00	40.0352
C13	110.00	500.00	24.1426
C14	122.91	200.00	4.0303
C15	304.87	900.00	22.5825
C16	72.00	170.00	97.0156
C17	295.84	400.00	42.2926
C18	300.67	850.00	20.4018
C19	300.67	140.00	101.1743
C20	247.51	140.00	101.1743
C21	98.88	100.00	101.638
C22	12.51	100.00	6.5701
C23	177.88	700.00	14.3353
C24	277.42	900.00	17.3940
C25	164.82	500.00	18.5318
C26	5.80	771.00	0.2451
C27	182.42	768.00	13.5001
C28	182.42	450.00	15.0719
C29	182.42	450.00	15.0719
C30	182.42	450.00	15.0719
C31	182.42	450.00	15.0719
C32	182.42	450.00	15.0719
C33	182.42	450.00	15.0719
C34	182.42	450.00	15.0719
C35	182.42	450.00	15.0719
C36	182.42	450.00	15.0719
C37	182.42	450.00	15.0719
C38	182.42	450.00	15.0719
C39	182.42	450.00	15.0719
C40	182.42	450.00	15.0719
C41	182.42	450.00	15.0719
C42	182.42	450.00	15.0719
C43	182.42	450.00	15.0719
C44	182.42	450.00	15.0719
C45	182.42	450.00	15.0719
C46	182.42	450.00	15.0719
C47	182.42	450.00	15.0719
C48	182.42	450.00	15.0719
C49	182.42	450.00	15.0719
C50	182.42	450.00	15.0719
C51	182.42	450.00	15.0719
C52	182.42	450.00	15.0719
C53	182.42	450.00	15.0719
C54	182.42	450.00	15.0719
C55	182.42	450.00	15.0719
C56	182.42	450.00	15.0719
C57	182.42	450.00	15.0719
C58	182.42	450.00	15.0719
C59	182.42	450.00	15.0719
C60	182.42	450.00	15.0719
C61	182.42	450.00	15.0719
C62	182.42	450.00	15.0719
C63	182.42	450.00	15.0719
C64	182.42	450.00	15.0719
C65	182.42	450.00	15.0719
C66	182.42	450.00	15.0719
C67	182.42	450.00	15.0719
C68	182.42	450.00	15.0719
C69	182.42	450.00	15.0719
C70	182.42	450.00	15.0719
C71	182.42	450.00	15.0719
C72	182.42	450.00	15.0719
C73	182.42	450.00	15.0719
C74	182.42	450.00	15.0719
C75	182.42	450.00	15.0719
C76	182.42	450.00	15.0719
C77	182.42	450.00	15.0719
C78	182.42	450.00	15.0719
C79	182.42	450.00	15.0719
C80	182.42	450.00	15.0719
C81	182.42	450.00	15.0719
C82	182.42	450.00	15.0719
C83	182.42	450.00	15.0719
C84	182.42	450.00	15.0719
C85	182.42	450.00	15.0719
C86	182.42	450.00	15.0719
C87	182.42	450.00	15.0719
C88	182.42	450.00	15.0719
C89	182.42	450.00	15.0719
C90	182.42	450.00	15.0719
C91	182.42	450.00	15.0719
C92	182.42	450.00	15.0719
C93	182.42	450.00	15.0719
C94	182.42	450.00	15.0719
C95	182.42	450.00	15.0719
C96	182.42	450.00	15.0719
C97	182.42	450.00	15.0719
C98	182.42	450.00	15.0719
C99	182.42	450.00	15.0719
C100	182.42	450.00	15.0719

LINE	LENGTH	BEARING
L1	81.49	S41°00'00"W
L2	144.53	S09°48'11"W
L3	35.97	S19°55'31"W
L4	148.14	N78°38'53"W
L5	81.53	S51°17'32"W
L6	45.56	S50°47'36"W
L7	49.32	S89°13'57"W
L8	49.32	S62°40'38"W
L9	17.60	N83°23'00"E
L10	96.07	S27°44'29"E
L11	140.00	S84°26'10"E
L12	27.44	S75°42'41"E
L13	37.61	N89°50'47"W
L14	27.44	S75°42'41"E
L15	219.41	N70°04'59"W
L16	219.41	N70°04'59"W
L17	82.38	N01°00'58"W
L18	22.37	N54°26'55"E
L19	36.54	S79°44'46"W
L20	182.42	S79°44'46"W
L21	182.42	S79°44'46"W
L22	46.78	S10°42'57"E
L23	60.14	S09°53'22"W
L24	33.36	S40°59'10"W
L25	60.14	S09°53'22"W
L26	110.33	S89°54'30"W
L27	83.91	S89°54'30"W
L28	204.62	S89°54'30"E
L29	115.82	N88°34'00"E
L30	100.25	N88°34'00"E
L31	200.41	N01°23'38"W

△=50'26'34"(P)
R=110.50(P)
L=97.28(P)
CHD=94.17(P)
BRG.=N19°08'11"(P)
△=53'40'39"(P)
R=114.50(P)
L=107.27(P)
CHD=103.39(P)
BRG.=N20°45'14"(P)
△=49°08'57"(P)
R=91.50(P)
L=76.84(P)
CHD=74.60(P)
BRG.=N23°32'04"(P)
N00°31'24"W
10.38(P)



MKEC
ENGINEERING
CONSULTANTS
1775 S. R2E, 6th P.M.
WICHITA, KS 67201
316-684-9900

