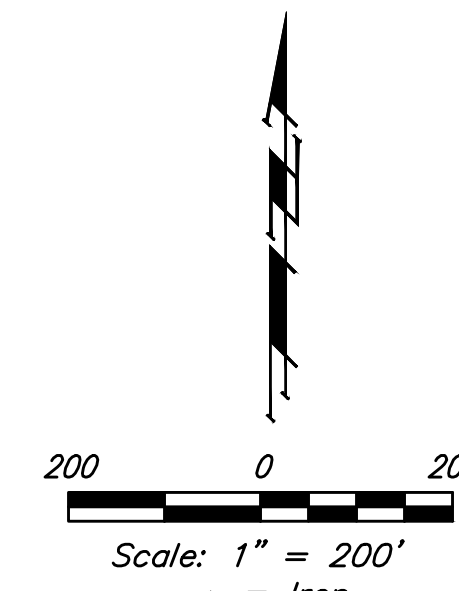
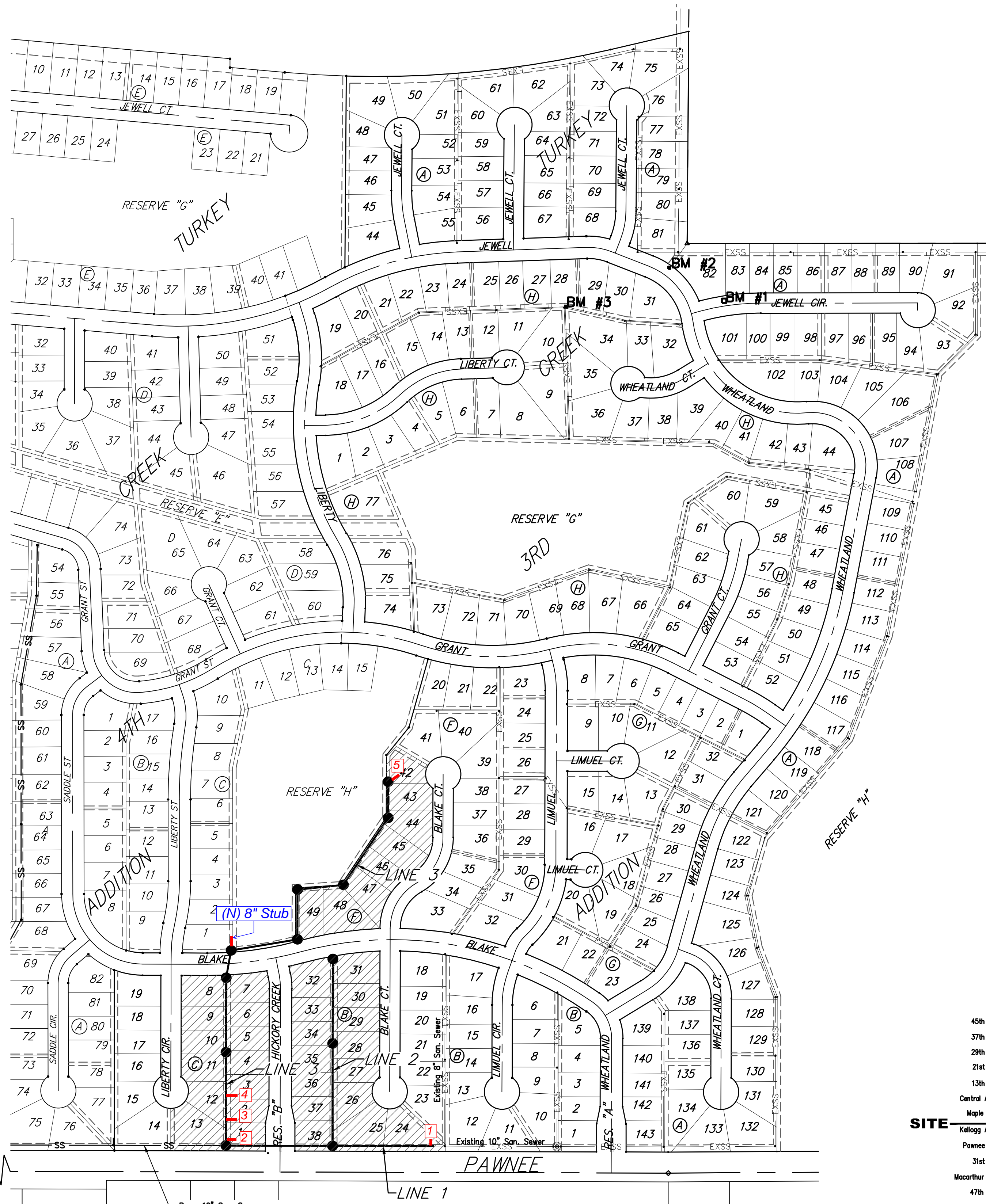


Sanitary Sewer Improvements to serve **TURKEY CREEK 3RD ADDITION - PHASE 4** CITY OF WICHITA, KANSAS

Gary Janzen, P.E. City Engineer
Project Number: 468-2020-016806
OCA Number: 810093

Mies Construction - Contractor
K. Kerns - City of Wichita, Field Project Engineer
E. Flores - City of Wichita, Inspector
As-built
Stub & Risers
Release Date (for connection purposes only): 4/13/2021
Completion Date:
pdf. apr 1/11/2022



SHEET INDEX

| | |
|-----------------------------|-------|
| Title Sheet | 1 |
| Line 1 | 2 |
| Line 2 | 3 |
| Line 3 | 4-6 |
| Erosion Control Plan | 7 |
| Erosion Control BMP Details | 8-12 |
| Standard Manhole Detail | 13 |
| Ring & Cover Detail | 14 |
| Vertical Riser Detail | 15 |
| Coordinate Sheet | 16-17 |
| Copy of Plat | 18 |

BENCHMARKS

- BM #1: "□" Cut in top of curb, south of SE corner of Lot 82, Block A, Turkey Creek 3rd Addition. Elev. = 1335.49 NGVD29
- BM #2: "□" Cut on top of curb inlet, SW of the SE corner of Lot 81, Block A, Turkey Creek 3rd Addition. Elev. = 1335.95 NGVD29
- BM #3: "□" Cut on top of yard inlet, 5' N & 43.5' E of the SE corner of Lot 28, Block H, Turkey Creek 3rd Addition. Elev. = 1335.95 NGVD29

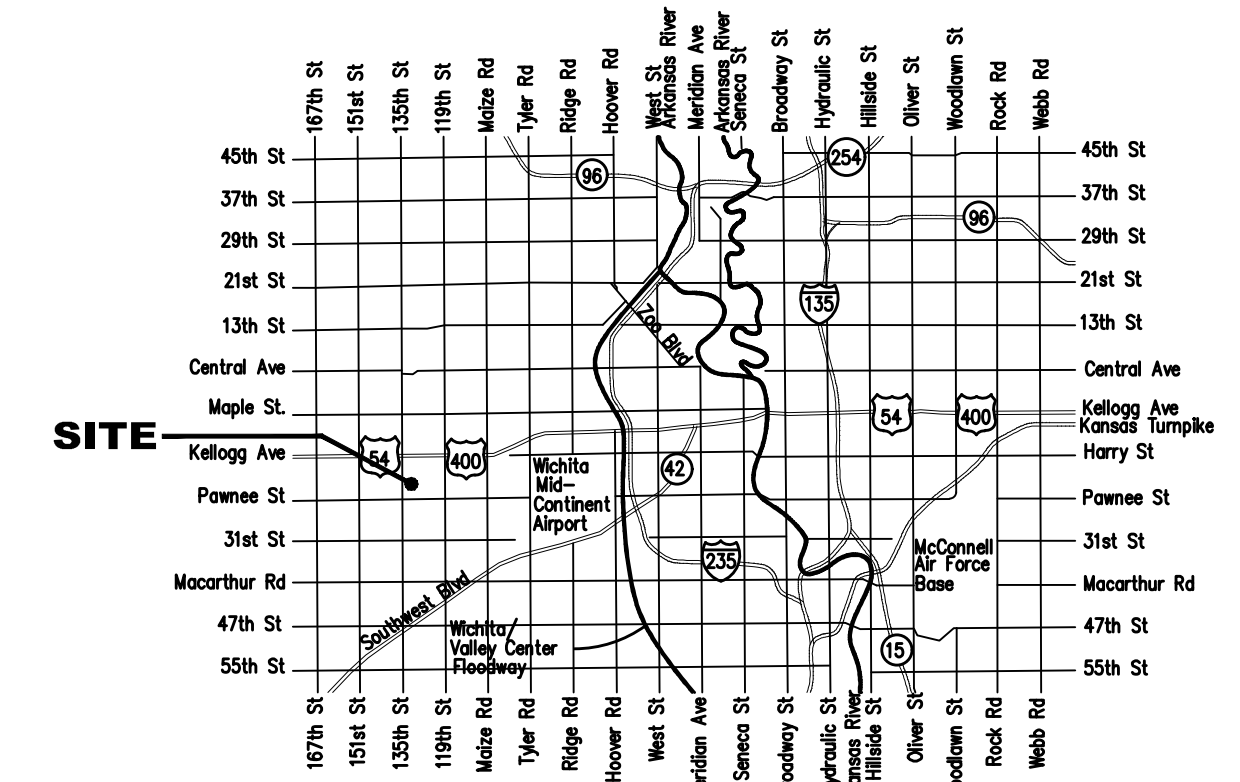
GENERAL NOTES:

- Contractor will be required to provide notice to utility companies a minimum of seventy-two (72) hours prior to any excavation, as follows:

| | |
|---|----------------|
| Kansas One-Call | 687-2470 |
| The Contractor must notify the following in case of an emergency: | |
| Cox Communications | 262-4270 |
| Kansas Gas Service | 1-888-482-4950 |
| Westar Energy | 383-8650 |
| Aquila Energy | 1-800-303-0357 |
| AT&T | 268-2245 |
| City of Wichita Water Dept. | 268-4563 |
| City of Wichita Sewer Maint. | 268-4024 |
| City of Wichita Storm Sewer Maint. | 268-4090 |
| City of Wichita Traffic Maint. | 268-4034 |
| Conoco Phillips Pipeline Co. | 1-877-267-2290 |
| Southern Star Pipeline Co. | 529-6600 |
| Kinder-Morgan Pipeline Co. | 1-888-844-5658 |
- Utility service lines, poles, valve boxes, meters, and etcetera are to be adjusted as necessary by others prior to construction unless the plans specifically call for their adjustment by the Contractor or unless the plans specifically identify a utility to be adjusted by its owner during construction. Existing utilities and their location, as shown on the plans, represent the best information obtainable for design. The Contractor will be required to work around existing utilities within the right-of-way which do not conflict with proposed construction.
- Rubble from the removal of miscellaneous structures and excess excavation which is to be wasted shall be disposed of on sites to be provided by the Contractor. These sites shall be approved by the Engineer as to suitability, appearance and site location. Locations, in the opinion of the Engineer, that leave an unsightly appearance will not be approved. All disposal sites must be approved by the Kansas Department of Health and Environment. Material either stockpiled or disposed of in a flood plain would require a Kansas State Board of Agriculture permit. Any material dumped in waters of the United States or wetlands is subject to U.S. Corps. of Engineers permitting regulations. Any material buried or stockpiled beyond approved construction limits would require additional archaeological investigations unless buried in a previously approved borrow location.
- Trees and shrubs in public right-of-way which are in direct conflict with proposed new construction shall be removed by the Contractor with the Engineer's approval. Trees and shrubs which are not in direct conflict with proposed new construction shall be saved and protected from damage.
- The Contractor shall give all property owners and/or tenants of developed property abutting the construction of this project a minimum of ten (10) days notice prior to start of construction.
- The Contractor shall be responsible for preserving property irons. The Contractor will be required to re-establish any property irons which are damaged or destroyed by his construction operations. Such irons shall be re-established by a licensed land surveyor in accordance with state laws.
- All existing and proposed erosion control measures including silt fencing, erosion control mat, straw bales, inlet barriers, and const. entrance shall be maintained throughout construction by the contractor and until project is accepted by the City of Wichita. The on-site engineer shall complete weekly reports on the status of erosion control measures. The contractor shall be required to comply with maintenance and/or replacement of erosion control measures as determined by the on-site engineer until project is accepted by City of Wichita. Maintenance and/or replacement of erosion control measures to be paid by L.S. bid item "Maintain Existing BMP's."
- All excess excavation shall remain on-site and shall be stockpiled or spread at a location determined by the engineer.
- The Contractor shall be responsible for maintaining continuous flow of sewage through construction. Contractor's proposed method for maintaining sewage flow shall be approved by the Engineer. Cost of maintaining flow of sewage through construction will not be paid for directly and this cost shall be considered as subsidiary to the other pay items of work.
- All areas disturbed during construction shall be seeded as follows (Temporary Seeding):

| |
|---|
| Seed: Rye grass (PLS)---5 lbs./1000 Sq. Ft. |
|---|

All costs associated with seeding shall be included in bid item "Seeding". All seeding operations shall conform to City of Wichita Standard Specifications.
- The Developer for this project is Paul Kelsey
716 N. 119th St. #112, Wichita, KS 67212
PH# (316)722-1077 email paul.kelsey@gmail.com



135TH STREET WEST

SW COR., SW1/4, Sec. 36,
TWP. 27-S, R-2-W

Prop. 10" San. Sewer
(Proj. #468-2020-016809)

BENEFIT DISTRICT

Baughman

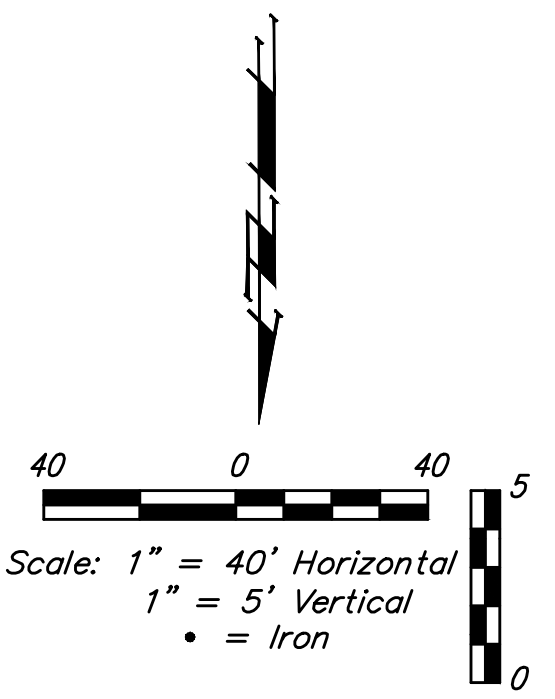
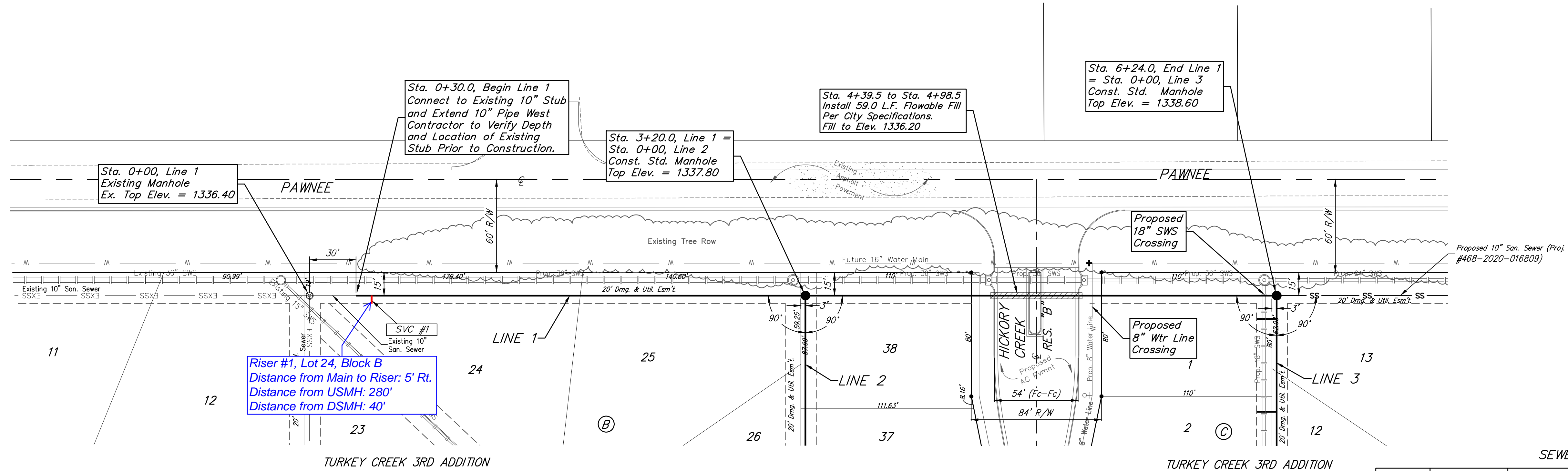
Baughman Company, P.A. 3115 Ellis St. Wichita, KS 67211 P 316-262-7271 F 316-262-0149
ENGINEERING | SURVEYING | PLANNING | LANDSCAPE ARCHITECTURE

BENCHMARKS:

BM #1: "□" Cut in top of curb, south of SE corner of Lot 82, Block A, Turkey Creek 3rd Addition. Elev. = 1335.49 NGVD29

BM #2: "□" Cut on top of curb inlet, SW of the SE corner of Lot 81, Block A, Turkey Creek 3rd Addition. Elev. = 1335.95 NGVD29

BM #3: "□" Cut on top of yard inlet, 5' N & 43.5' E of the SE corner of Lot 28, Block H, Turkey Creek 3rd Addition. Elev. = 1335.95 NGVD29



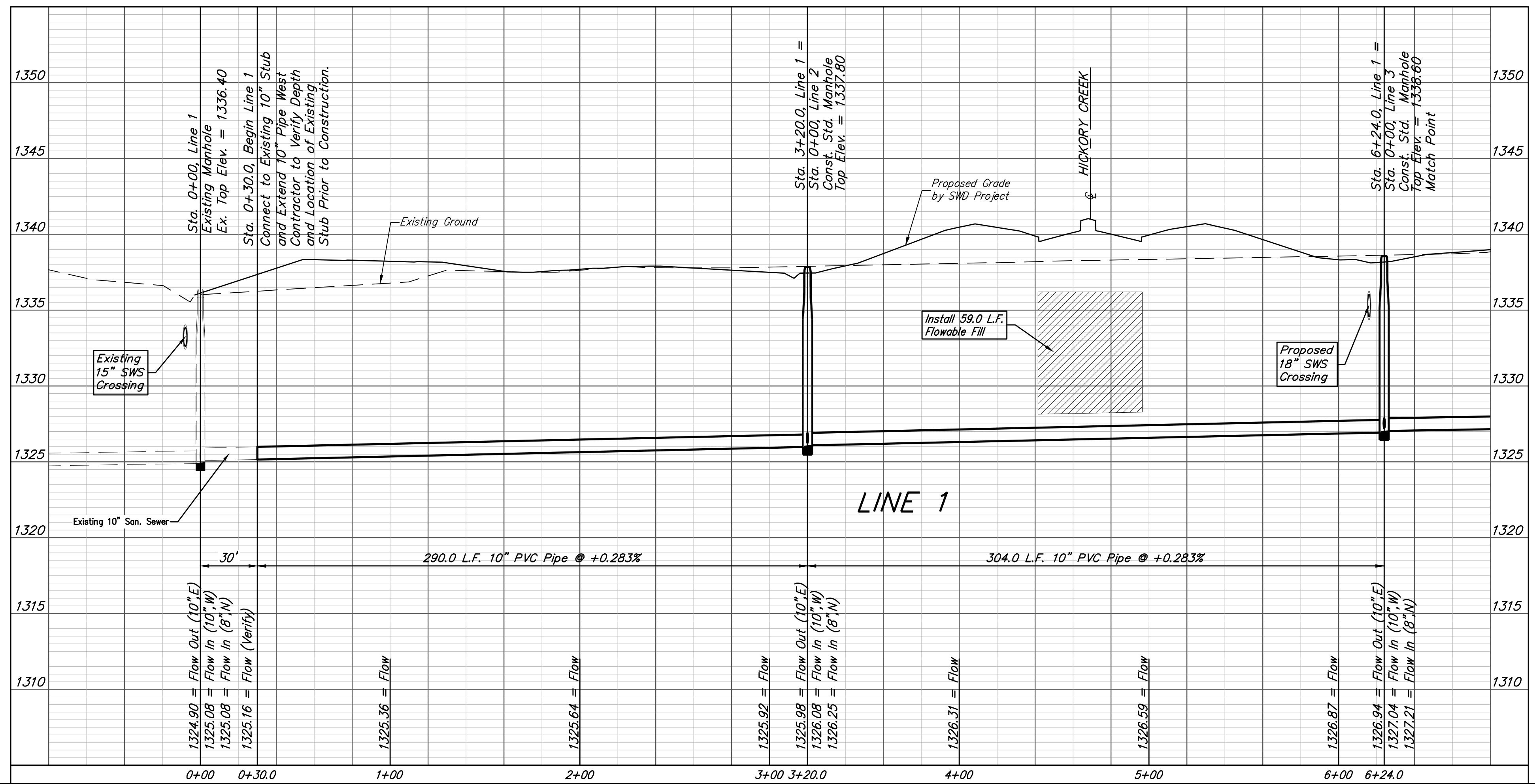
Riser #1, Lot 24, Block B
Distance from Main to Riser: 5' Rt.
Distance from USMH: 280'
Distance from DSMH: 40'

NO ADDITIONAL TAPS ARE ALLOWED ON LINE 1

SEWER SERVICE TABLE

| NUMBER | TYPE | LOCATION | | | FOR INFORMATION ONLY | |
|--------|--------------|----------|-----------|----------|----------------------|----------------------------------|
| | | LOT NO. | BLOCK NO. | LINE NO. | STATION/DIRECTION | APPROXIMATE LENGTH 4" PIPE |
| 1 | 10" X 4" Tee | 24 | B | 1 | 0+40.0/Rt. | VERTICAL: 9.5' HORIZONTAL: 5' |

NOTE: Vertical Riser Pipe shall be extended to 2' minimum above ground water elevation and 4' maximum below proposed ground elevation.



Baughman

Turkey Creek 3rd Addition - Phase 4
LINE 1
Sanitary Sewer Improvements

Baughman Company, P.A. 315 Ellis St. Wichita, KS 67211 P 316-262-7271 F 316-262-0149
ENGINEERING | SURVEYING | PLANNING | LANDSCAPE ARCHITECTURE

| | | |
|-----------------------------------|----------------|-------------------|
| PROJECT NUMBER 468-2020-016806 | DESIGN DMV | DRAWN JAK |
| REVISIONS: | APPROVED | DATE 9/10/2020 |
| | SCALE Noted | |
| | SHEET | 2 OF 18 |

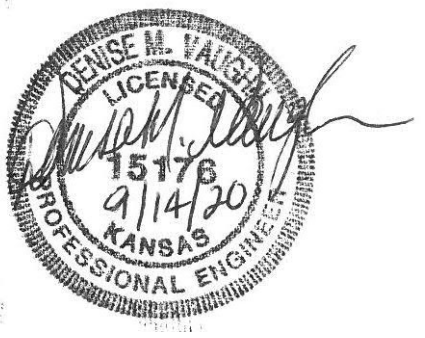
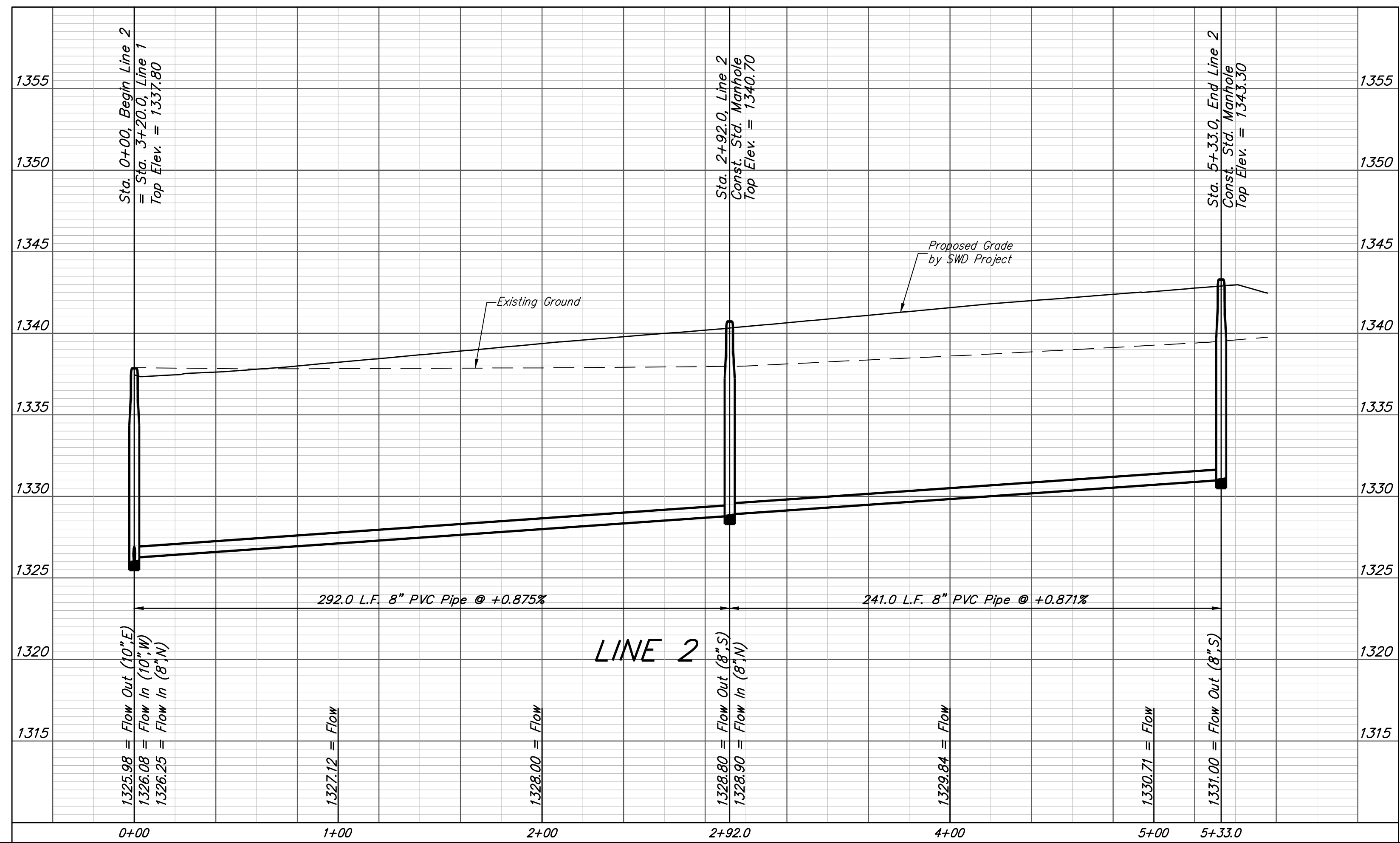
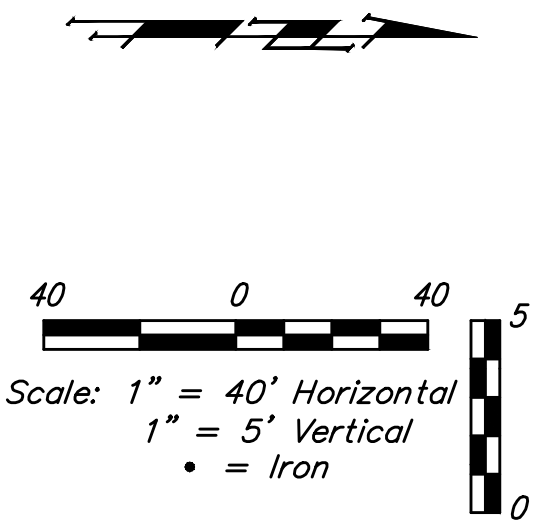
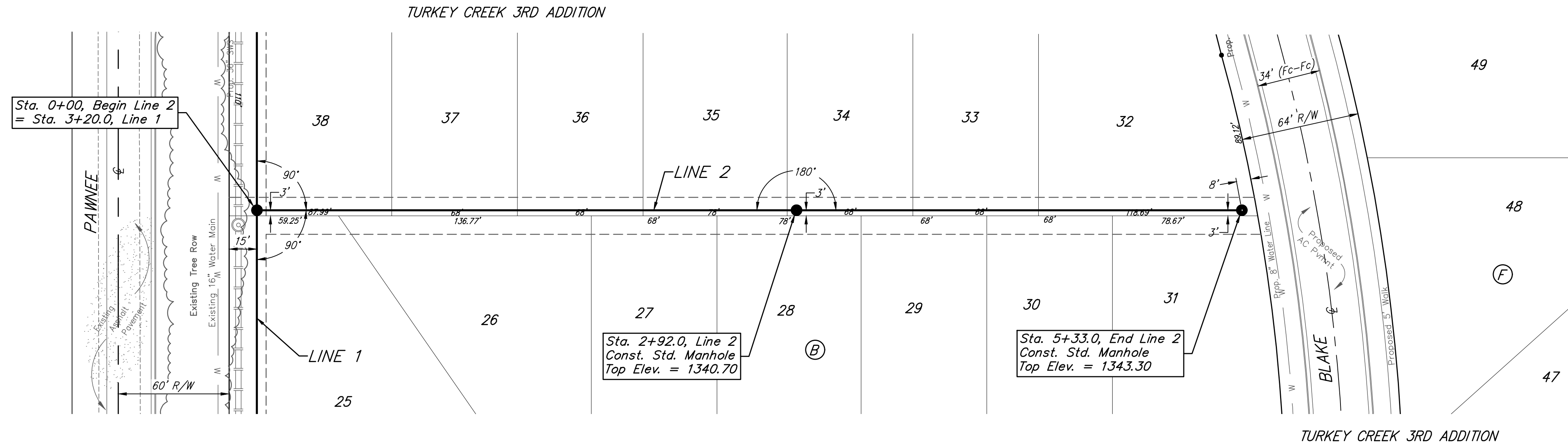
E:\Projects\Turkey Creek 3rd\Engineering\Phase 4\SS_2020-016806\SS PLANS.dwg

BENCHMARKS:

BM #1: "□" Cut in top of curb, south of SE corner of Lot 82, Block A, Turkey Creek 3rd Addition.
Elev. = 1335.49 NGVD29

BM #2: "□" Cut on top of curb inlet, SW of the SE corner of Lot 81, Block A, Turkey Creek 3rd Addition.
Elev. = 1335.95 NGVD29

BM #3: "□" Cut on top of yard inlet, 5' N & 43.5' E of the SE corner of Lot 28, Block H, Turkey Creek 3rd Addition.
Elev. = 1335.95 NGVD29



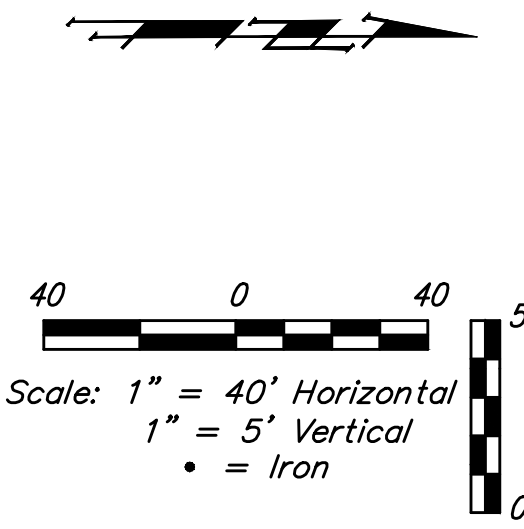
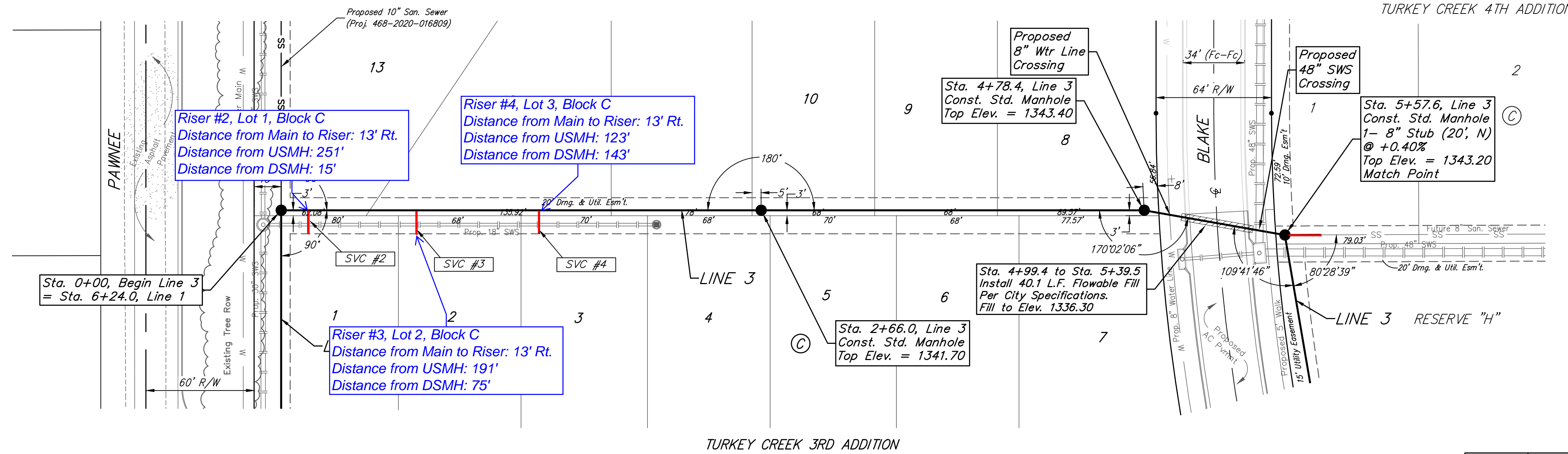
| | | |
|---|--|----------------------------------|
| | Turkey Creek 3rd Addition - Phase 4 | |
| | LINE 2 Sanitary Sewer Improvements | |
| <small>Baughman Company, P.A. 315 Ellis St. Wichita, KS 67211 P 316-262-7271 F 316-262-0149 ENGINEERING SURVEYING PLANNING LANDSCAPE ARCHITECTURE</small> | | |
| <small>PROJECT NUMBER</small> 468-2020-016806 | <small>DESIGN</small> DMV | <small>DRAWN</small> JAK |
| <small>REVISIONS:</small> | <small>APPROVED</small> | <small>DATE</small> 9/10/2020 |
| <small>SCALE</small> Noted | | <small>SHEET</small> |
| 3 OF 18 | | |

BENCHMARKS:

BM #1: "□" Cut in top of curb, south of SE corner of Lot 82, Block A, Turkey Creek 3rd Addition.
Elev. = 1335.49 NGVD29

BM #2: "□" Cut on top of curb inlet, SW of the SE corner of Lot 81, Block A, Turkey Creek 3rd Addition.
Elev. = 1335.95 NGVD29

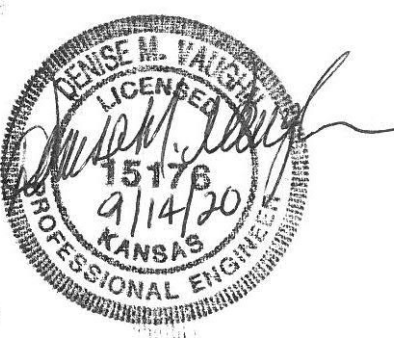
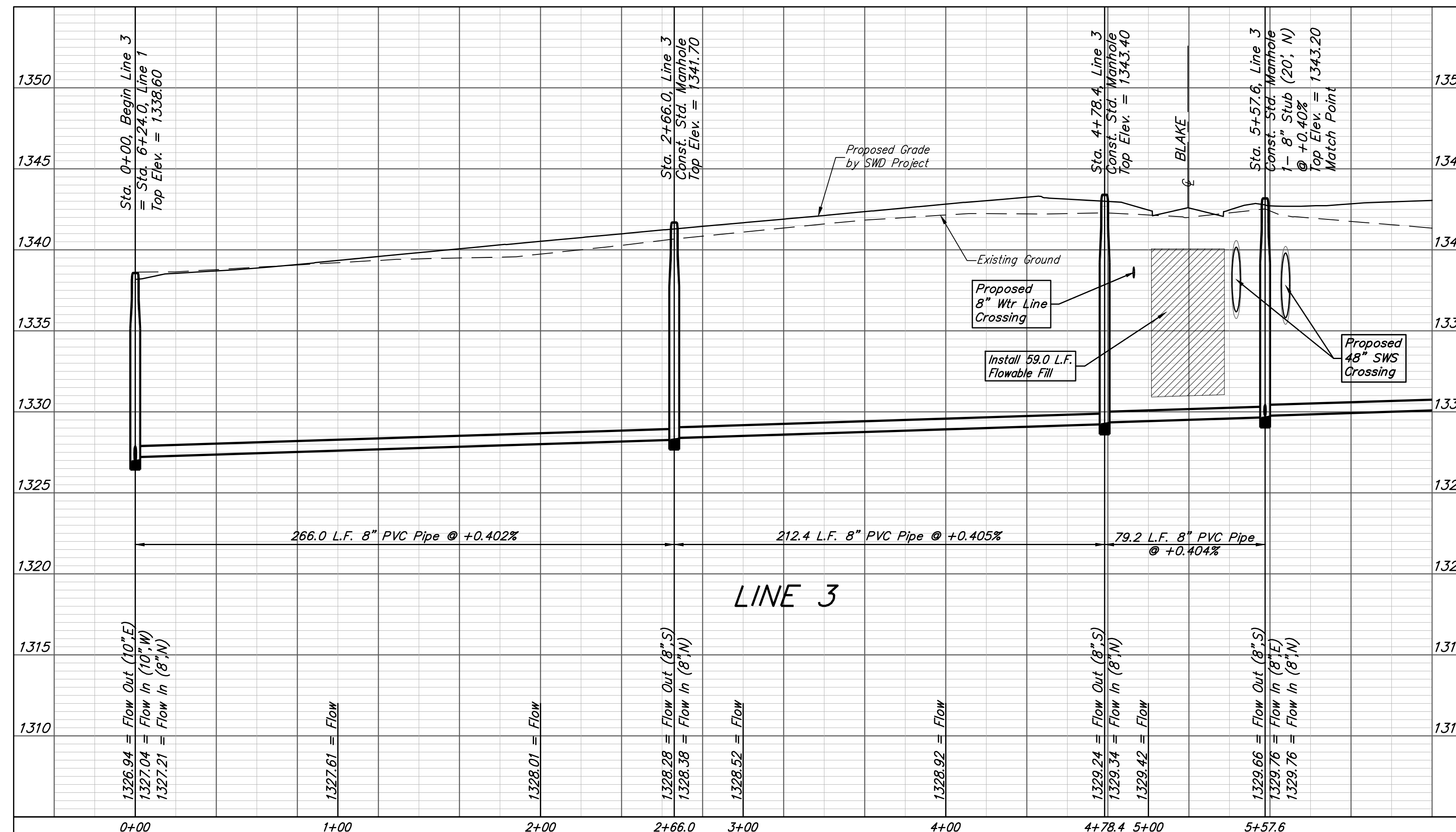
BM #3: "□" Cut on top of yard inlet, 5' N & 43.5' E of the SE corner of Lot 28, Block H, Turkey Creek 3rd Addition.
Elev. = 1335.95 NGVD29



SEWER SERVICE TABLE

| NUMBER | TYPE | LOCATION | | | | FOR INFORMATION ONLY | |
|--------|-------------|----------|-----------|----------|-------------------|----------------------------|-----|
| | | LOT NO. | BLOCK NO. | LINE NO. | STATION/DIRECTION | APPROXIMATE LENGTH 4" PIPE | |
| 2 | 8" X 4" Tee | 1 | C | 3 | 0+15.0/Rt. | 6.8' | 13' |
| 3 | 8" X 4" Tee | 2 | C | 3 | 0+75.0/Rt. | 7.5' | 13' |
| 4 | 8" X 4" Tee | 3 | C | 3 | 1+43.0/Rt. | 8' | 13' |

NOTE: Vertical Riser Pipe shall be extended to 2' minimum above ground water elevation and 4' maximum below proposed ground elevation.



Baughman Turkey Creek 3rd Addition - Phase 4
LINE 3
Sanitary Sewer Improvements

Baughman Company, P.A. 315 Ellis St. Wichita, KS 67211 P 316-262-7271 F 316-262-0149
ENGINEERING | SURVEYING | PLANNING | LANDSCAPE ARCHITECTURE

PROJECT NUMBER: 468-2020-016806
DESIGN: DMV
DRAWN: JAK
APPROVED: [Signature]
DATE: 9/10/2020

REVISIONS:

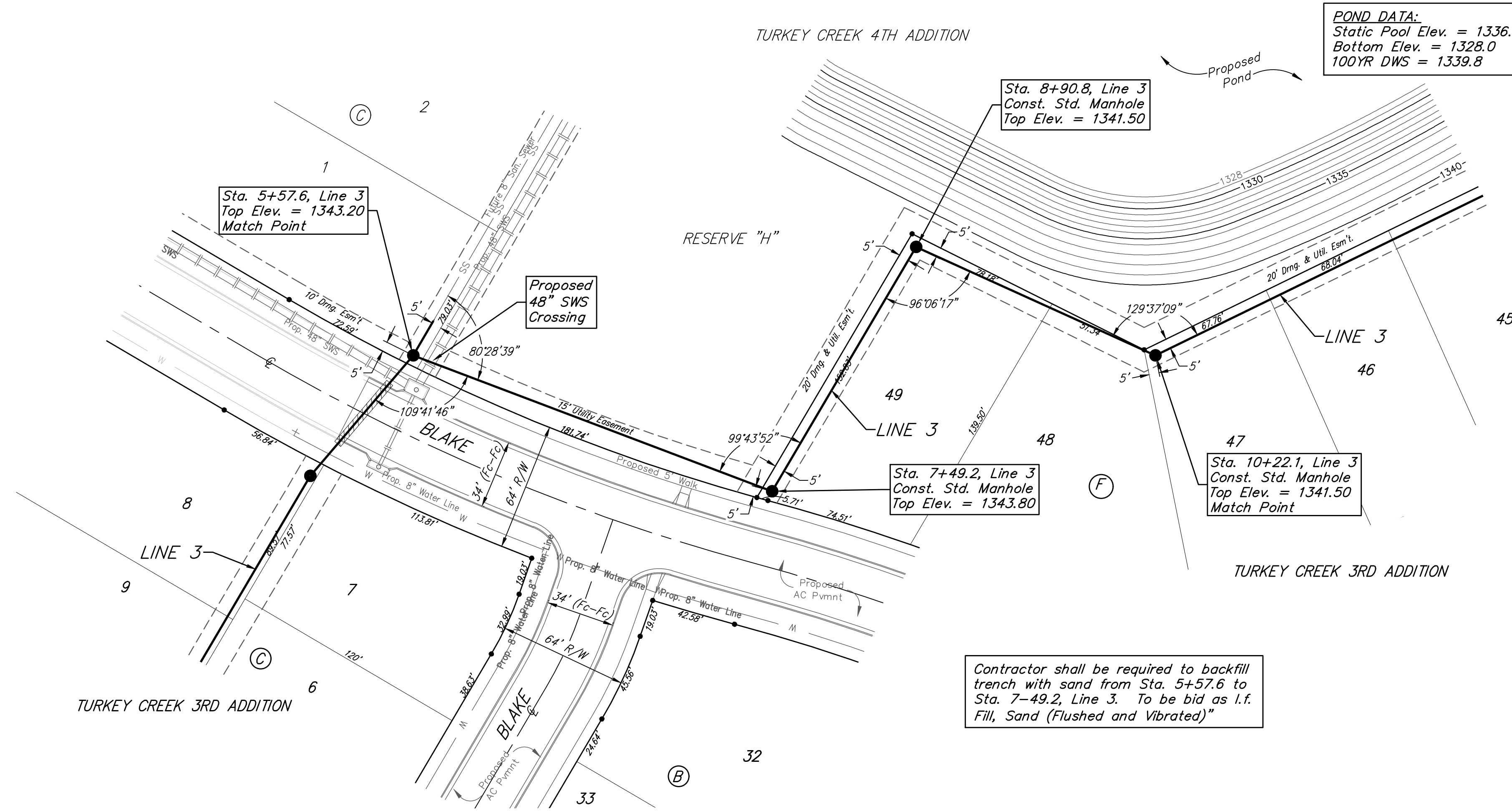
SCALE: Noted
SHEET: 4 OF 18

BENCHMARKS:

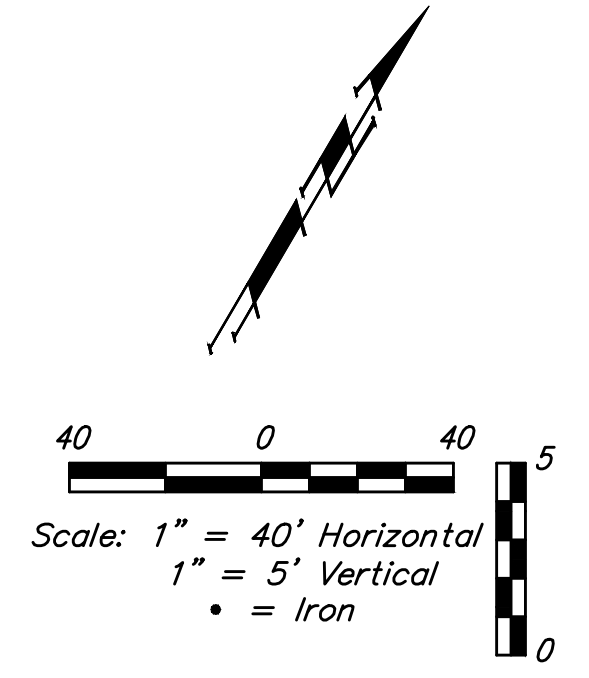
BM #1: "□" Cut in top of curb, south of SE corner of Lot 82, Block A, Turkey Creek 3rd Addition. Elev. = 1335.49 NGVD29

BM #2: "□" Cut on top of curb inlet, SW of the SE corner of Lot 81, Block A, Turkey Creek 3rd Addition. Elev. = 1335.95 NGVD29

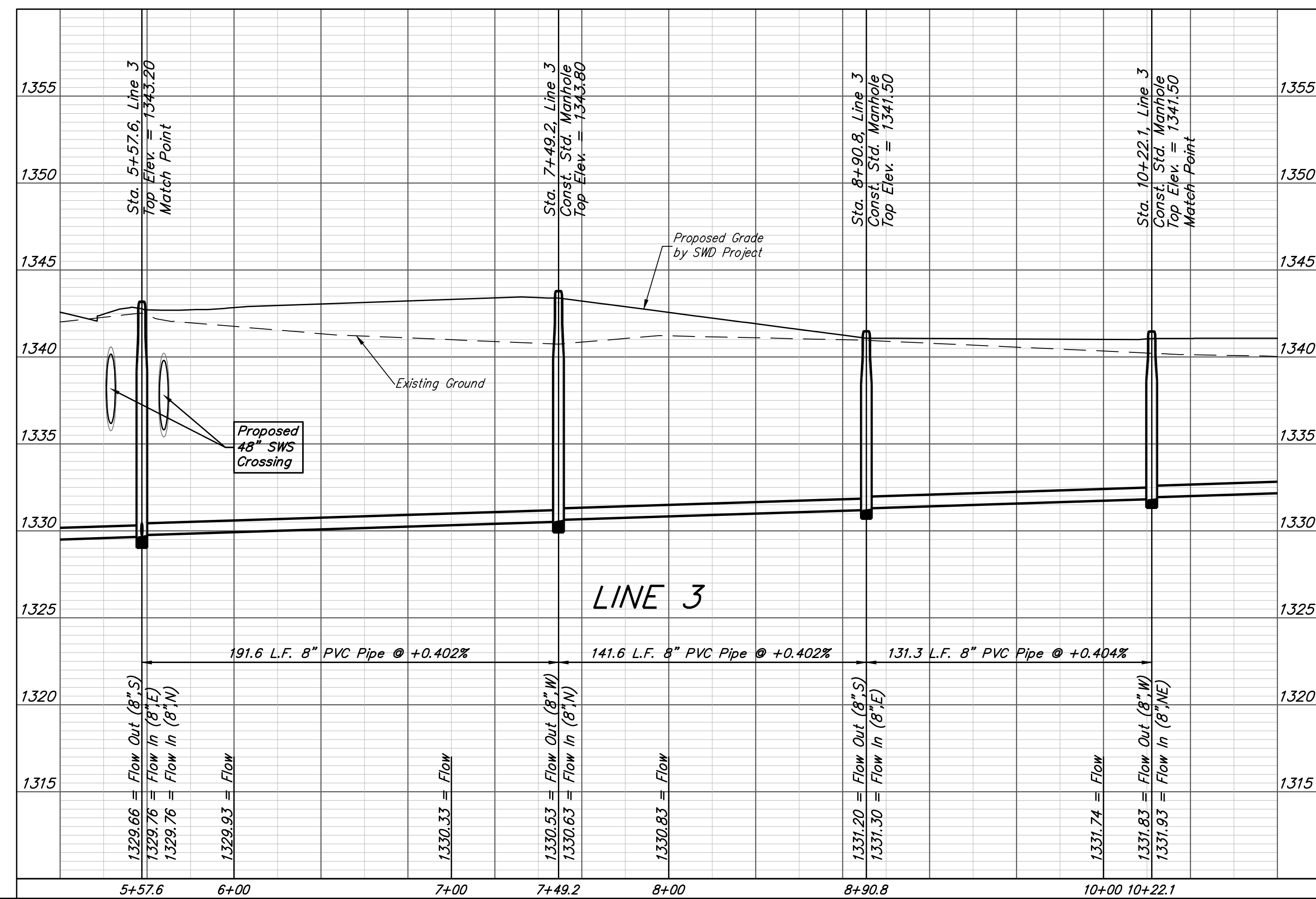
BM #3: "□" Cut on top of yard inlet, 5' N & 43.5' E of the SE corner of Lot 28, Block H, Turkey Creek 3rd Addition. Elev. = 1335.95 NGVD29



POND DATA:
 Static Pool Elev. = 1336.0
 Bottom Elev. = 1328.0
 100YR DWS = 1339.8



Contractor shall be required to backfill trench with sand from Sta. 5+57.6 to Sta. 7+49.2, Line 3. To be bid as I.F. Fill, Sand (Flushed and Vibrated)"



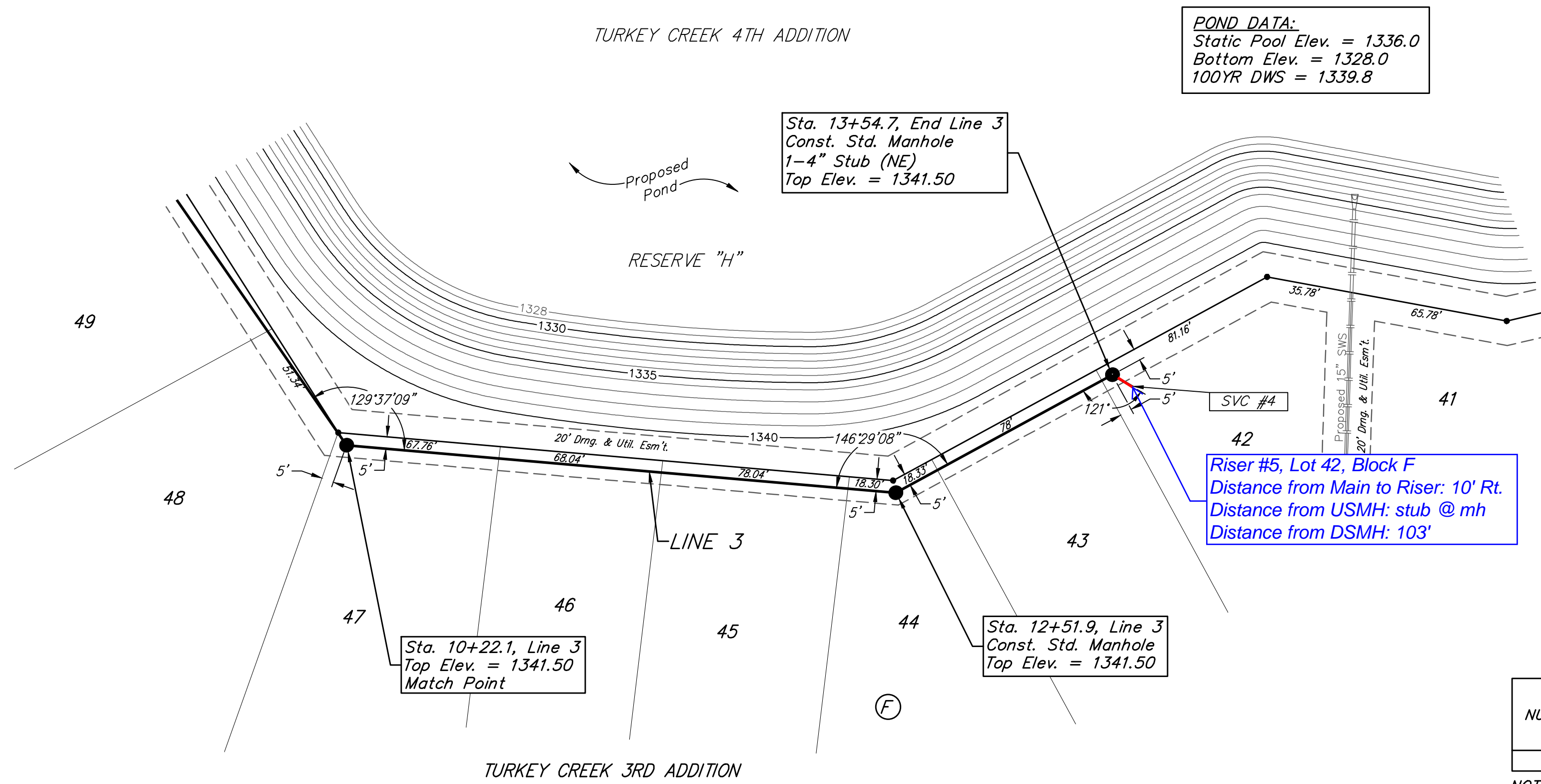
| | | | |
|---|---------------|-------------------------------------|-------------------|
| Baughman | | Turkey Creek 3rd Addition - Phase 4 | |
| | | LINE 3 | |
| | | Sanitary Sewer Improvements | |
| Baughman Company, P.A. 315 Ellis St. Wichita, KS 67211 P 316-262-7271 F 316-262-0149 ENGINEERING SURVEYING PLANNING LANDSCAPE ARCHITECTURE | | | |
| PROJECT NUMBER 468-2020-016806 | DESIGN DMV | DRAWN JAK | DATE 9/10/2020 |
| REVISIONS: | APPROVED | SCALE Noted | SHEET |
| | | | 5 OF 18 |

BENCHMARKS:

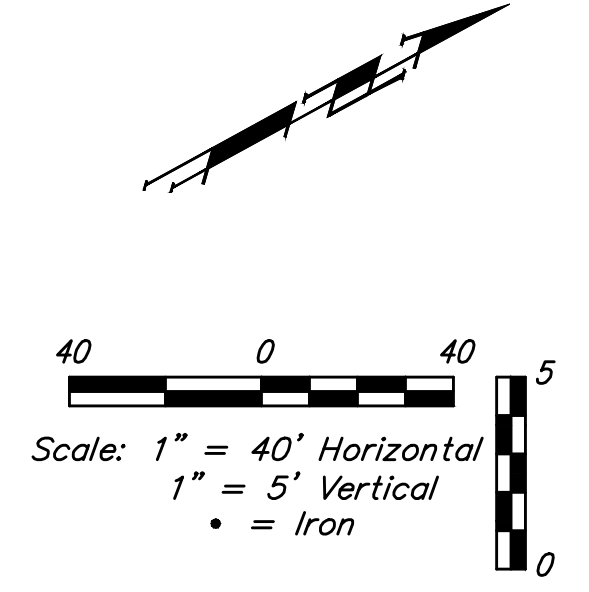
BM #1: "□" Cut in top of curb, south of SE corner of Lot 82, Block A, Turkey Creek 3rd Addition.
Elev. = 1335.49 NGVD29

BM #2: "□" Cut on top of curb inlet, SW of the SE corner of Lot 81, Block A, Turkey Creek 3rd Addition.
Elev. = 1335.95 NGVD29

BM #3: "□" Cut on top of yard inlet, 5' N & 43.5' E of the SE corner of Lot 28, Block H, Turkey Creek 3rd Addition.
Elev. = 1335.95 NGVD29



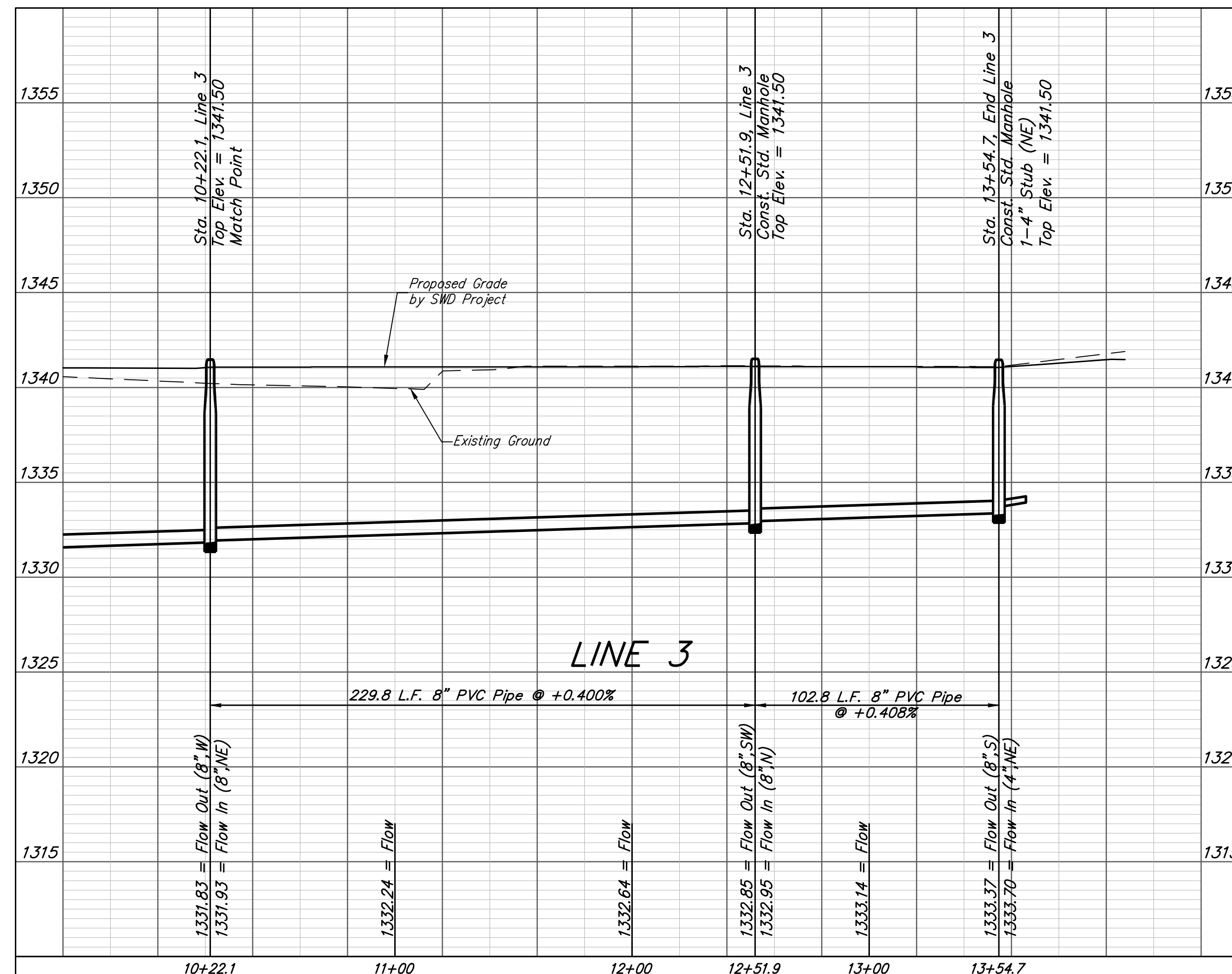
POND DATA:
Static Pool Elev. = 1336.0
Bottom Elev. = 1328.0
100YR DWS = 1339.8



SEWER SERVICE TABLE

| NUMBER | TYPE | LOCATION | | | | FOR INFORMATION ONLY | |
|--------|---------|----------|-----------|----------|-------------------|----------------------------|------------|
| | | LOT NO. | BLOCK NO. | LINE NO. | STATION/DIRECTION | APPROXIMATE LENGTH 4" PIPE | |
| | | | | | | VERTICAL | HORIZONTAL |
| 5 | 4" Stub | 42 | F | 3 | 13+54.7/Rt. | - | 10' |

NOTE: Vertical Riser Pipe shall be extended to 2' minimum above ground water elevation and 4' maximum below proposed ground elevation.



Baughman

Turkey Creek 3rd Addition - Phase 4
LINE 3
Sanitary Sewer Improvements

Baughman Company, P.A. 315 Ellis St. Wichita, KS 67211 P 316-262-7271 F 316-262-0149
ENGINEERING | SURVEYING | PLANNING | LANDSCAPE ARCHITECTURE

| | | |
|--|----------------|-------------------------|
| PROJECT NUMBER 468-2020-016806 | DESIGN DMV | DRAWN JAK |
| REVISIONS: | APPROVED | DATE 9/10/2020 |
| | SCALE Noted | SHEET 6 OF 18 |

E:\Projects\Turkey Creek 3rd\Engineering\Phase 4\SS_2022-E495\SS PLANS.dwg

| IRONS Point Table | | |
|-------------------|----------|----------|
| Point # | Northing | Easting |
| 1 | 27408.50 | 27748.76 |
| 2 | 27406.82 | 27440.43 |
| 3 | 27407.14 | 27318.75 |
| 4 | 27407.36 | 27234.75 |
| 5 | 27409.65 | 26374.75 |
| 6 | 27409.88 | 26290.75 |
| 14 | 29940.46 | 24938.07 |
| 23 | 30550.98 | 27275.03 |
| 24 | 30602.88 | 27497.55 |
| 25 | 29998.28 | 28319.90 |
| 26 | 29736.28 | 28320.04 |
| 27 | 29626.13 | 28209.84 |
| 28 | 29289.96 | 28145.86 |
| 29 | 29255.58 | 28139.31 |
| 30 | 28876.91 | 28067.24 |
| 31 | 28584.63 | 27955.23 |
| 32 | 28301.77 | 27713.63 |
| 33 | 28138.05 | 27667.84 |
| 34 | 27990.87 | 27696.79 |
| 35 | 27849.53 | 27749.93 |
| 36 | 27487.36 | 27234.96 |
| 37 | 27487.14 | 27318.96 |
| 38 | 27536.32 | 27245.09 |
| 39 | 27536.15 | 27309.09 |
| 40 | 27731.24 | 27245.61 |
| 41 | 27731.07 | 27309.61 |
| 42 | 27807.89 | 27205.64 |
| 43 | 27860.47 | 27242.13 |
| 44 | 27838.55 | 27267.45 |
| 45 | 27783.83 | 27300.63 |
| 46 | 27971.75 | 27034.69 |
| 47 | 27993.52 | 26974.51 |
| 48 | 27932.38 | 26955.58 |
| 49 | 27912.65 | 27010.12 |
| 50 | 27826.46 | 26936.87 |
| 51 | 27826.31 | 26994.87 |
| 52 | 27618.89 | 26936.31 |
| 53 | 27618.73 | 26994.31 |
| 54 | 28044.42 | 26675.13 |
| 55 | 28043.99 | 26617.13 |
| 56 | 27979.96 | 26617.28 |
| 57 | 27980.40 | 26675.28 |
| 58 | 27619.74 | 26616.31 |
| 59 | 27619.59 | 26674.31 |
| 60 | 27489.88 | 26290.97 |
| 61 | 27489.65 | 26374.97 |
| 62 | 27538.84 | 26301.10 |
| 63 | 27538.67 | 26365.10 |
| 64 | 27872.48 | 26301.99 |
| 65 | 27872.31 | 26365.99 |
| 66 | 27905.27 | 26298.85 |
| 67 | 27917.59 | 26361.65 |
| 68 | 27923.94 | 26295.18 |
| 69 | 27936.26 | 26357.99 |
| 70 | 27946.60 | 26399.29 |
| 71 | 28008.35 | 26382.47 |
| 72 | 27974.32 | 26125.45 |
| 73 | 27910.32 | 26125.28 |
| 74 | 27974.51 | 26054.26 |
| 75 | 27974.68 | 25990.26 |
| 76 | 27910.67 | 25993.09 |
| 77 | 27910.52 | 26051.09 |
| 78 | 27621.40 | 25992.32 |
| 79 | 27621.25 | 26050.32 |
| 80 | 27910.81 | 25941.20 |

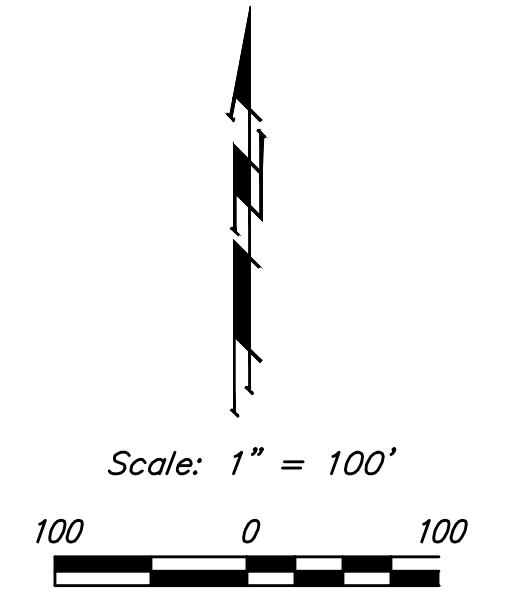
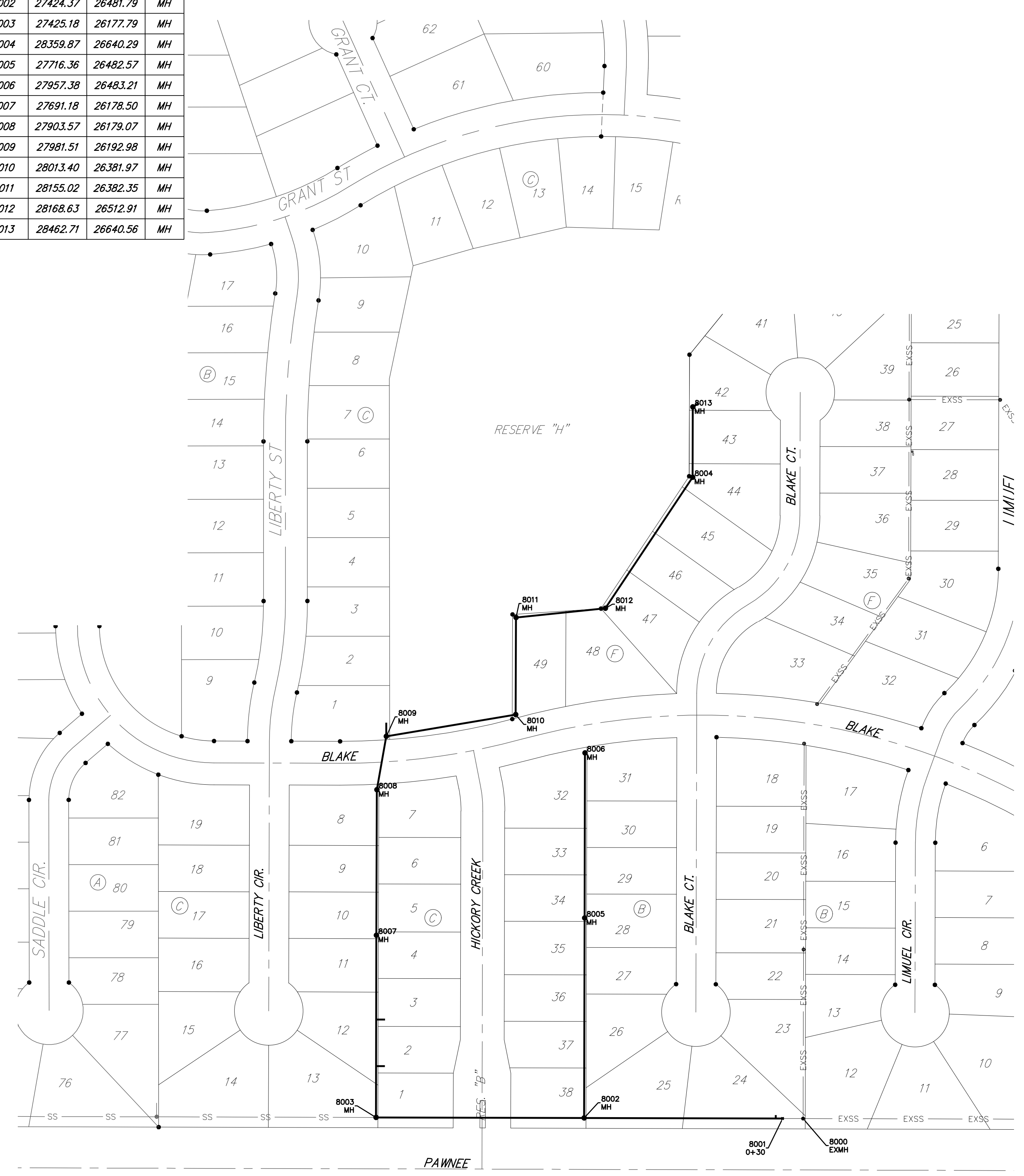
| IRONS Point Table | | |
|-------------------|----------|----------|
| Point # | Northing | Easting |
| 81 | 27974.81 | 25941.37 |
| 88 | 27895.80 | 27361.86 |
| 99 | 27841.08 | 27395.04 |
| 100 | 27947.00 | 27487.52 |
| 101 | 28002.30 | 27505.25 |
| 102 | 27994.20 | 27436.53 |
| 103 | 27999.52 | 27512.64 |
| 104 | 27945.24 | 27492.20 |
| 105 | 27845.66 | 27560.92 |
| 106 | 27845.51 | 27618.92 |
| 107 | 27618.44 | 27560.31 |
| 108 | 27618.29 | 27618.31 |
| 109 | 28288.87 | 27518.96 |
| 110 | 28271.63 | 27580.59 |
| 111 | 28491.08 | 27626.77 |
| 112 | 28449.51 | 27675.43 |
| 113 | 28566.50 | 27691.19 |
| 114 | 28524.94 | 27739.86 |
| 115 | 28614.25 | 27729.43 |
| 116 | 28666.68 | 27766.12 |
| 117 | 29014.19 | 27906.06 |
| 118 | 29002.23 | 27968.93 |
| 119 | 29341.60 | 27968.38 |
| 120 | 29329.63 | 28031.25 |
| 121 | 29483.48 | 27838.97 |
| 122 | 29547.18 | 27832.83 |
| 123 | 29614.81 | 27541.44 |
| 124 | 29664.08 | 27510.84 |
| 125 | 29769.11 | 27478.13 |
| 126 | 29777.75 | 27541.54 |
| 127 | 29833.79 | 27526.59 |
| 128 | 29962.51 | 27396.10 |
| 129 | 29902.90 | 27372.81 |
| 130 | 29945.04 | 27264.97 |
| 131 | 29989.72 | 27326.45 |
| 132 | 30010.18 | 27272.18 |
| 133 | 30018.71 | 27205.67 |
| 134 | 29954.75 | 27207.91 |
| 135 | 30012.44 | 27026.92 |
| 136 | 30010.40 | 26968.90 |
| 137 | 30005.74 | 26836.22 |
| 138 | 29941.78 | 26838.46 |
| 139 | 29995.19 | 26730.15 |
| 140 | 29983.77 | 26673.28 |
| 141 | 29901.66 | 26461.55 |
| 142 | 29845.70 | 26492.61 |
| 143 | 29812.19 | 26426.03 |
| 144 | 29872.41 | 26403.82 |
| 145 | 29849.89 | 26350.15 |
| 146 | 29854.90 | 26348.53 |
| 147 | 29787.72 | 26366.65 |
| 148 | 29779.67 | 26369.20 |
| 149 | 29798.99 | 26430.21 |
| 172 | 28682.56 | 27743.43 |
| 173 | 28630.13 | 27706.74 |
| 174 | 28670.71 | 27639.23 |
| 175 | 28727.71 | 27668.32 |
| 176 | 28794.24 | 27537.95 |
| 177 | 28820.60 | 27486.29 |
| 178 | 28830.02 | 27467.83 |
| 179 | 28773.01 | 27438.74 |
| 180 | 28816.15 | 27139.85 |
| 181 | 28811.50 | 27141.06 |
| 182 | 28795.44 | 27079.11 |
| 183 | 28801.88 | 27077.44 |

| IRONS Point Table | | |
|-------------------|----------|----------|
| Point # | Northing | Easting |
| 184 | 28871.14 | 27092.55 |
| 185 | 28883.51 | 26740.78 |
| 186 | 28822.84 | 26720.40 |
| 187 | 28918.61 | 26573.78 |
| 188 | 28921.58 | 26509.85 |
| 189 | 28960.37 | 26511.65 |
| 190 | 28957.39 | 26575.59 |
| 255 | 28199.15 | 26706.79 |
| 256 | 28148.68 | 26735.38 |
| 257 | 28304.10 | 26768.14 |
| 258 | 28303.95 | 26826.14 |
| 259 | 28443.54 | 26768.51 |
| 260 | 28443.38 | 26826.51 |
| 261 | 28044.78 | 27008.20 |
| 262 | 27998.16 | 27052.05 |
| 263 | 28226.23 | 27086.93 |
| 264 | 28184.46 | 27148.05 |
| 265 | 28183.92 | 27160.57 |
| 266 | 28241.87 | 27163.07 |
| 267 | 28242.39 | 27150.98 |
| 268 | 28492.93 | 27151.65 |
| 269 | 28550.93 | 27151.80 |
| 270 | 28492.63 | 27264.97 |
| 271 | 28550.63 | 27265.12 |
| 272 | 28722.89 | 27088.26 |
| 273 | 28722.72 | 27152.26 |
| 274 | 28974.39 | 27564.77 |
| 275 | 28948.02 | 27616.43 |
| 276 | 29100.40 | 27607.92 |
| 277 | 29089.56 | 27664.90 |
| 278 | 29119.78 | 27611.61 |
| 279 | 29108.93 | 27668.59 |
| 280 | 29636.22 | 27465.99 |
| 281 | 29586.95 | 27496.59 |
| 282 | 29558.73 | 27357.16 |
| 283 | 29615.24 | 27371.91 |
| 284 | 29856.96 | 27702.88 |
| 285 | 29798.96 | 27702.91 |
| 286 | 29857.19 | 28149.97 |
| 287 | 29799.17 | 28100.65 |
| 288 | 29999.04 | 27330.09 |
| 289 | 30020.15 | 27276.07 |
| 290 | 30090.08 | 27289.53 |
| 291 | 30089.62 | 27347.53 |
| 292 | 30350.68 | 27291.57 |
| 293 | 30350.23 | 27349.57 |
| 294 | 30295.97 | 26971.13 |
| 295 | 30295.52 | 27029.13 |
| 296 | 30055.49 | 26658.88 |
| 297 | 30066.91 | 26715.75 |
| 298 | 30148.83 | 26649.97 |
| 299 | 30148.38 | 26707.97 |
| 300 | 30266.87 | 26650.90 |
| 301 | 30266.41 | 26708.89 |
| 302 | 29986.68 | 26328.69 |
| 303 | 29986.23 | 26386.69 |
| 308 | 29605.20 | 26380.86 |
| 309 | 29594.18 | 26443.90 |
| 310 | 29508.17 | 26435.00 |
| 311 | 29450.18 | 26435.80 |
| 312 | 29138.16 | 26467.05 |
| 313 | 29170.97 | 26522.01 |
| 314 | 29450.55 | 26462.89 |
| 315 | 29508.55 | 26462.09 |
| 316 | 29587.30 | 26654.47 |

| IRONS Point Table | | |
|-------------------|----------|----------|
| Point # | Northing | Easting |
| 317 | 29545.39 | 26694.56 |
| 318 | 29668.95 | 26848.04 |
| 319 | 29610.99 | 26850.08 |
| 320 | 29614.10 | 26938.84 |
| 321 | 29672.07 | 26936.81 |

| CONTROL POINTS Point Table | | | |
|----------------------------|----------|----------|---------|
| Point # | Northing | Easting | Desc. |
| 501 | 32584.25 | 24901.96 | NWCOR |
| 502 | 32612.53 | 27513.28 | N1\4COR |
| 503 | 29999.21 | 30061.99 | E1\4COR |
| 504 | 27360.78 | 29997.18 | SECOR |
| 505 | 27353.64 | 24880.59 | SWCOR |
| 506 | 29939.11 | 24878.07 | W1\4COR |
| 507 | 29997.85 | 27492.82 | CTR |
| 508 | 27346.81 | 27439.22 | S1\4COR |
| 600 | 27336.68 | 26119.57 | R |
| 601 | 27364.65 | 28223.19 | R |
| 602 | 29803.90 | 30075.28 | N |
| 603 | 29939.45 | 24908.10 | AMPA5 |
| 604 | 29338.88 | 28762.95 | ARM5 |
| 606 | 29999.06 | 30022.07 | ARM5 |
| 607 | 29751.25 | 29799.36 | N |
| 702 | 27442.50 | 24976.73 | CP |
| 707 | 29164.34 | 27472.03 | CP |
| 710 | 32566.65 | 26958.64 | CP |
| 718 | 30423.52 | 24912.64 | AMPA5 |
| 801 | 27376.51 | 29966.08 | PK |
| 803 | 29899.34 | 24954.88 | CP |
| 804 | 30073.40 | 27453.20 | CP |
| 810 | 32566.64 | 26958.64 | CP |
| 811 | 32473.94 | 26206.49 | 4BF |
| 812 | 30624.50 | 26190.89 | 4BF |
| 813 | 30569.47 | 26223.82 | CP |
| 815 | 31305.15 | 27502.90 | 4BF |
| 816 | 30731.98 | 27498.38 | 4BF |
| 817 | 30351.39 | 24911.86 | 4BF |
| 822 | 27390.46 | 30036.25 | BMCOW |
| 843 | 30634.08 | 24962.62 | N |
| 845 | 27365.81 | 28315.31 | BMCOW |

| SS POINTS Point Table | | | |
|-----------------------|----------|----------|-------|
| Point # | Northing | Easting | Desc. |
| 8000 | 27423.51 | 26801.79 | EXMH |
| 8001 | 27423.59 | 26771.79 | 0+30 |
| 8002 | 27424.37 | 26481.79 | MH |
| 8003 | 27425.18 | 26177.79 | MH |
| 8004 | 28359.87 | 26640.29 | MH |
| 8005 | 27716.36 | 26482.57 | MH |
| 8006 | 27957.38 | 26483.21 | MH |
| 8007 | 27691.18 | 26178.50 | MH |
| 8008 | 27903.57 | 26179.07 | MH |
| 8009 | 27981.51 | 26192.98 | MH |
| 8010 | 28013.40 | 26381.97 | MH |
| 8011 | 28155.02 | 26382.35 | MH |
| 8012 | 28168.63 | 26512.91 | MH |
| 8013 | 28462.71 | 26640.56 | MH |



| | | |
|------------------------|--|--------------------------|
| | 17 Coordinate Sheet | |
| | <small>Baughman Company, P.A. 315 Ellis St. Wichita, KS 67211 P 316-263-2271 F 316-263-0149 ENGINEERING SURVEYING PLANNING LANDSCAPE ARCHITECTURE</small> | |
| PROJECT NUMBER 468- | DESIGN DMV | DRAWN JAK |
| REVISIONS: | APPROVED | DATE 6/24/2020 |
| SCALE Noted | | SHEET 17 OF 18 |