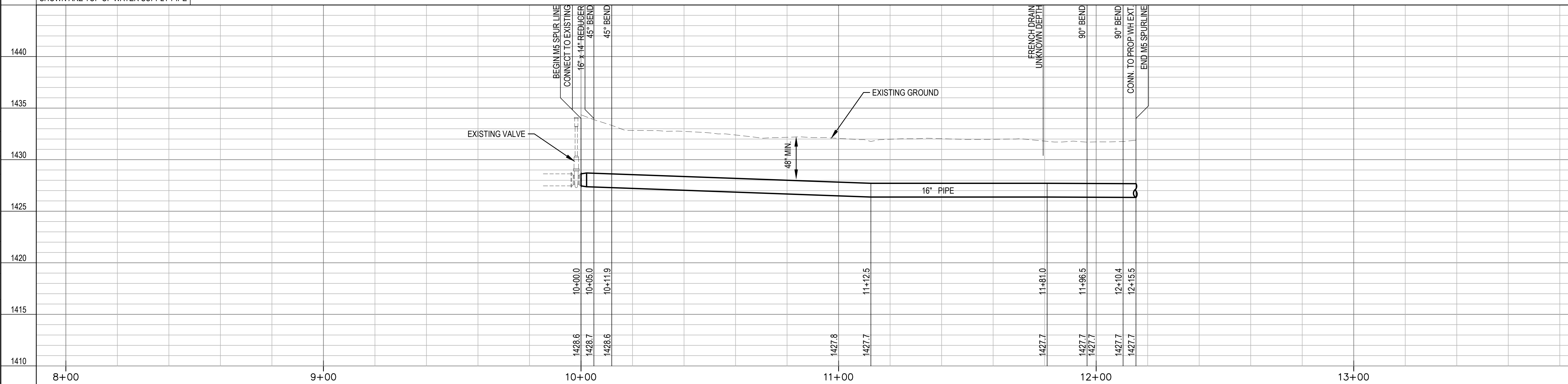
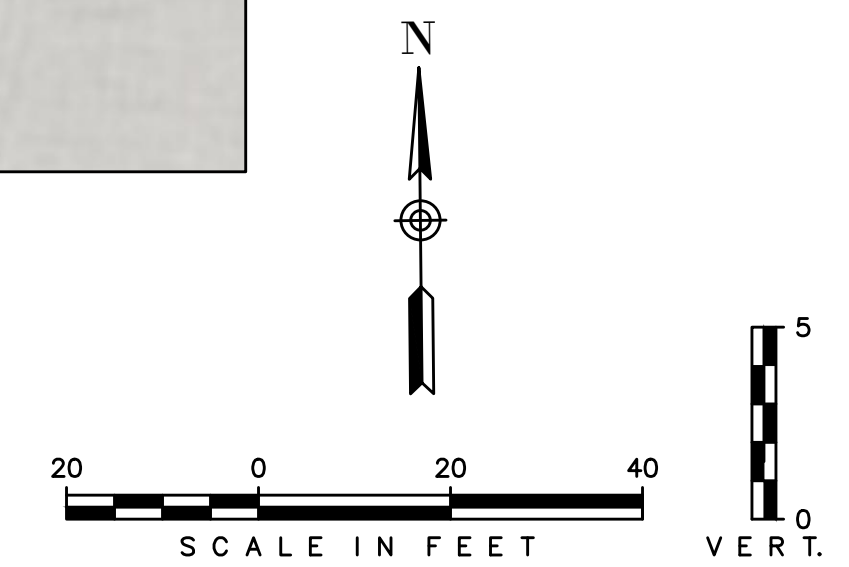


\* PRIOR TO BEGINNING CONSTRUCTION, THE CONTRACTOR SHALL EXCAVATE THE EXISTING WATERLINE AT STA. 10+00.00 TO VERIFY PIPE SIZE, TYPE, FITTINGS, & HORIZONTAL & VERTICAL LOCATION. THE CONTRACTOR SHALL REPORT HIS FINDINGS TO THE ENGINEER SO THAT ANY NECESSARY PLAN MODIFICATIONS MAY BE MADE. ANY ADDITIONAL LABOR OR MATERIALS NECESSARY TO COMPLETE THE CONNECTION SHALL BE CONSIDERED SUBSIDIARY TO THE PROJECT.

✕ DENOTES PIPE TO BE ABANDONED

M05 SPUR LINE (ADD ALTERNATE 2)

UNLESS NOTED OTHERWISE, ELEVATIONS SHOWN ARE TOP OF WATER SUPPLY PIPE

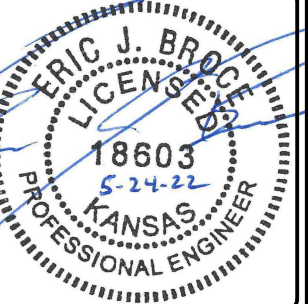


Environment & Infrastructure Solutions, Inc.  
 245 N. WACO AVENUE, SUITE 110  
 WICHITA, KANSAS 67202  
 PHONE: 316-448-2711  
 FAX: 316-448-2711



M05 SPURLINE (ADD ALT. 2)  
 EQUUS WELLFIELD SPURLINE REPLACEMENT  
 GARY JANZEN, P.E. - CITY ENGINEER  
 CITY OF WICHITA

DESIGNED BY: EJB  
 DRAWN BY: JAN  
 CHECKED BY: ---  
 DATE: MAY 24, 2022



PROJECT NO.  
639020

SHEET NO.  
17  
OF 35

Last Saved by: alex.mckeen Plotted By: Mckeen, Alex Plot Date/Time: 5/24/2022 1:34 PM File: L:\8275000373 Wichita Spurline\05 CAD\Sheets\Bid Package 8\M05.dwg