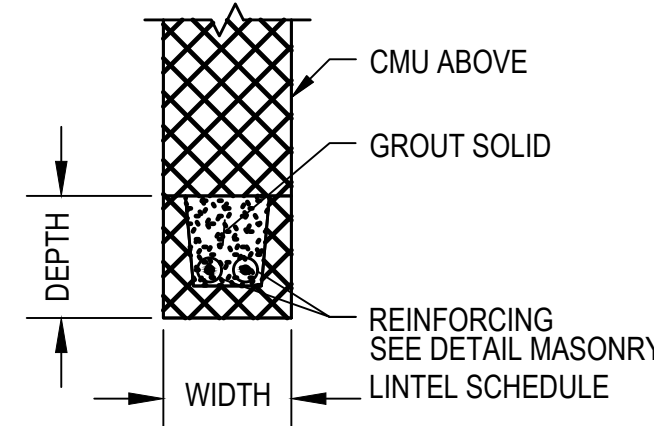


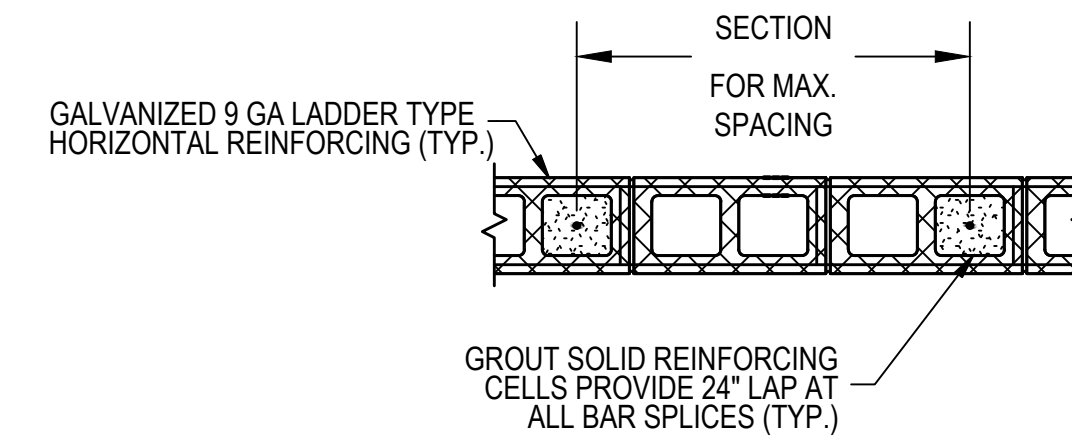
**NOTES:**

1. THIS DETAIL TYPICAL AT MASONRY OPENINGS U.N.O.
2. ALL VERTICAL CMU REINFORCING SHALL HAVE MATCHING DOWELS IN FOUNDATION WALL (TYP.)
3. SEE PLAN AND TYPICAL SECTIONS FOR VERTICAL AND HORIZONTAL REINFORCING.
4. CLEAR SPAN SHALL BE SUFFICIENT TO INSTALL A 48" X 48" WINDOW. NEW WINDOW SHALL BE A DOUBLE HUNG, HURRICANE RATED, FIBERGLASS FRAMED WINDOW.

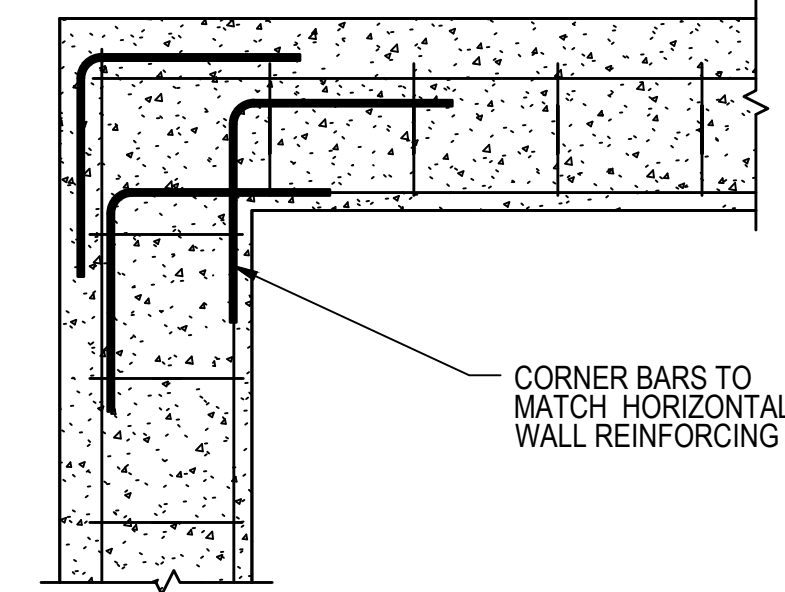
MASONRY LINTEL SCHEDULE			
CLEAR SPAN	WIDTH	DEPTH	LINTEL REINF
≤ 10'-0"	8"	16"	(2) #5 CONT
≤ 10'-0"	12"	16"	(2) #5 CONT



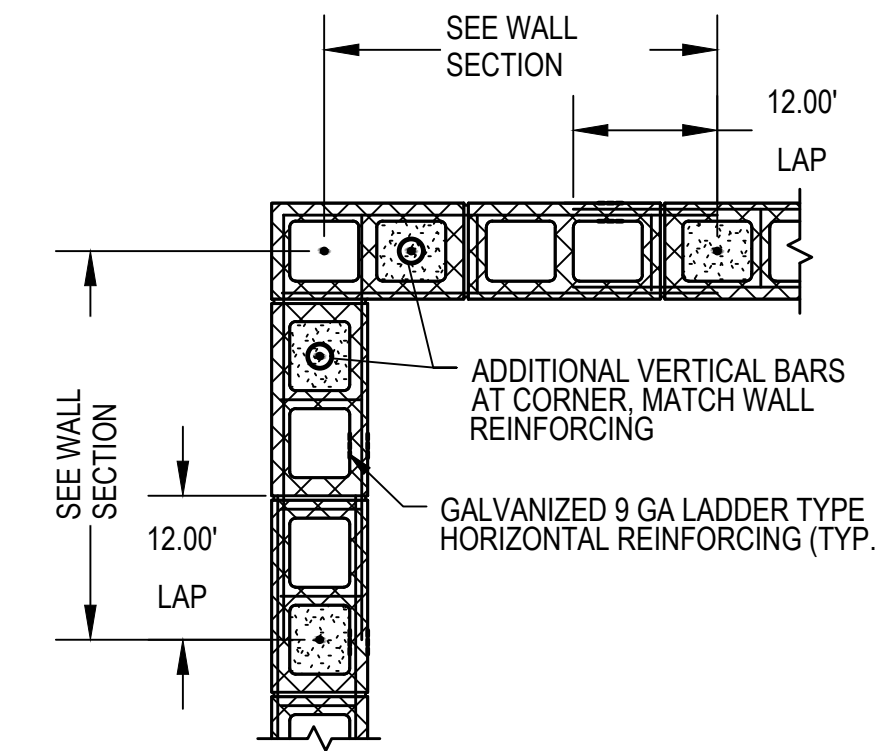
**D2 SECTION AT MASONRY LINTEL**  
1" = 1'-0"



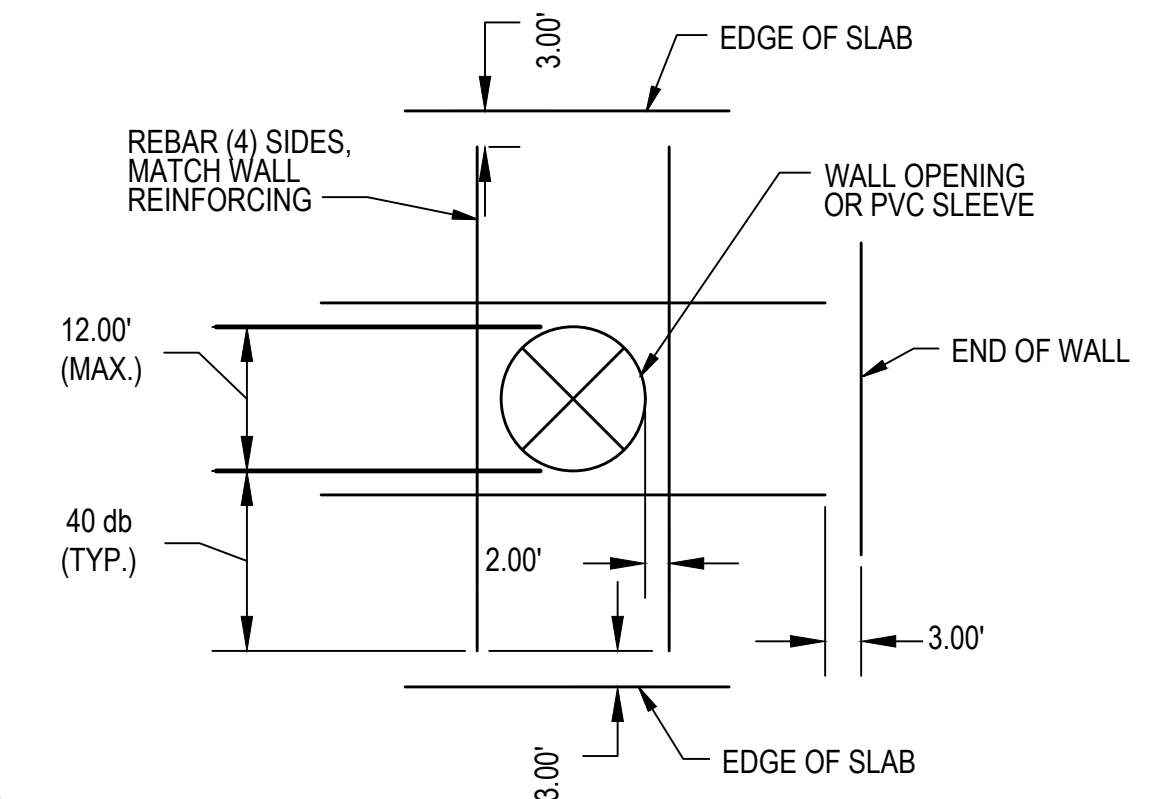
**D4 TYPICAL MASONRY WALL DETAIL**  
1/2" = 1'-0"



**D5 TYPICAL CORNER REINFORCEMENT DETAIL**  
1/2" = 1'-0"

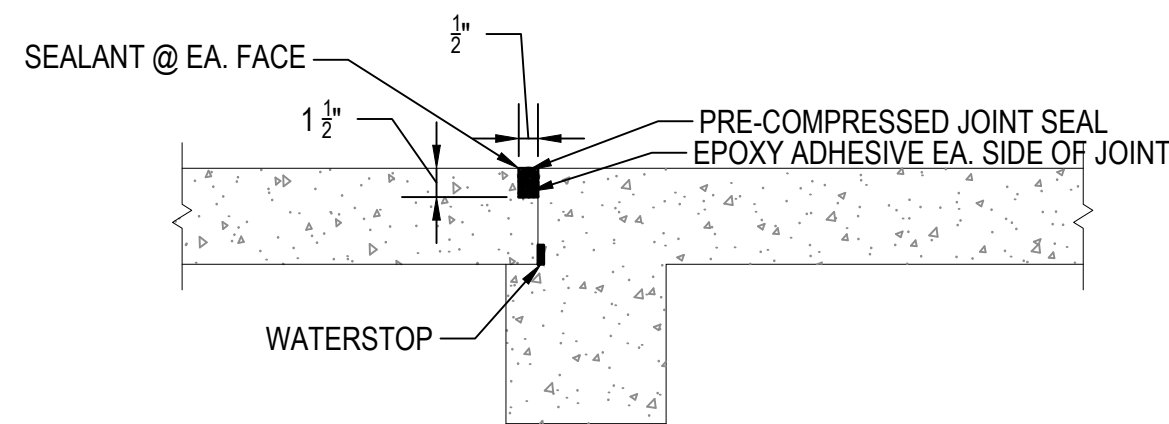


**D3 MASONRY WALL AT CORNER**  
1/2" = 1'-0"

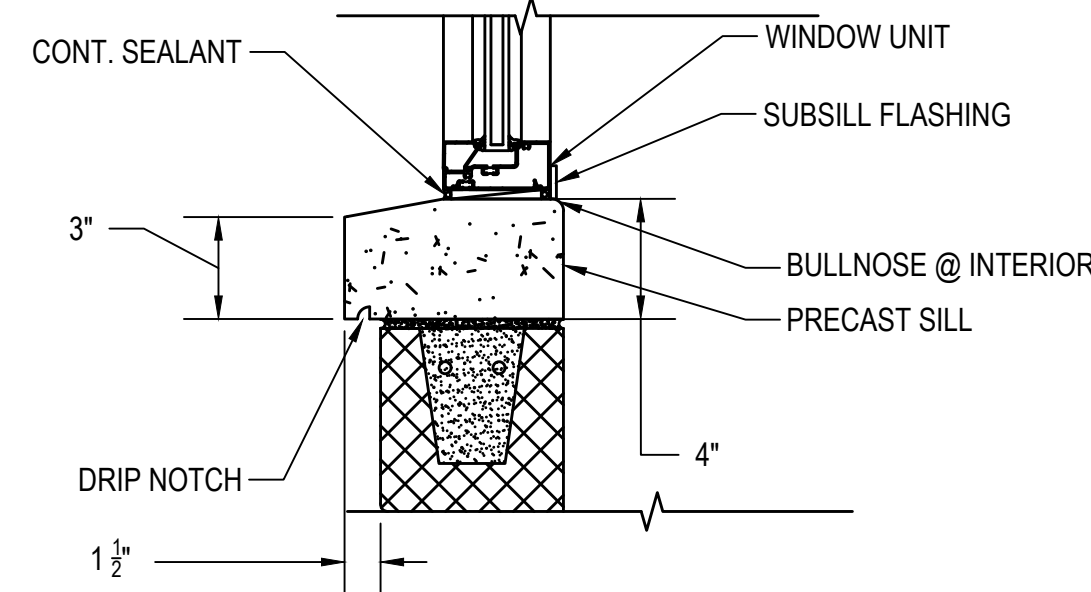


**D6 TYPICAL ROUND PENETRATION DETAIL**  
1/2" = 1'-0"

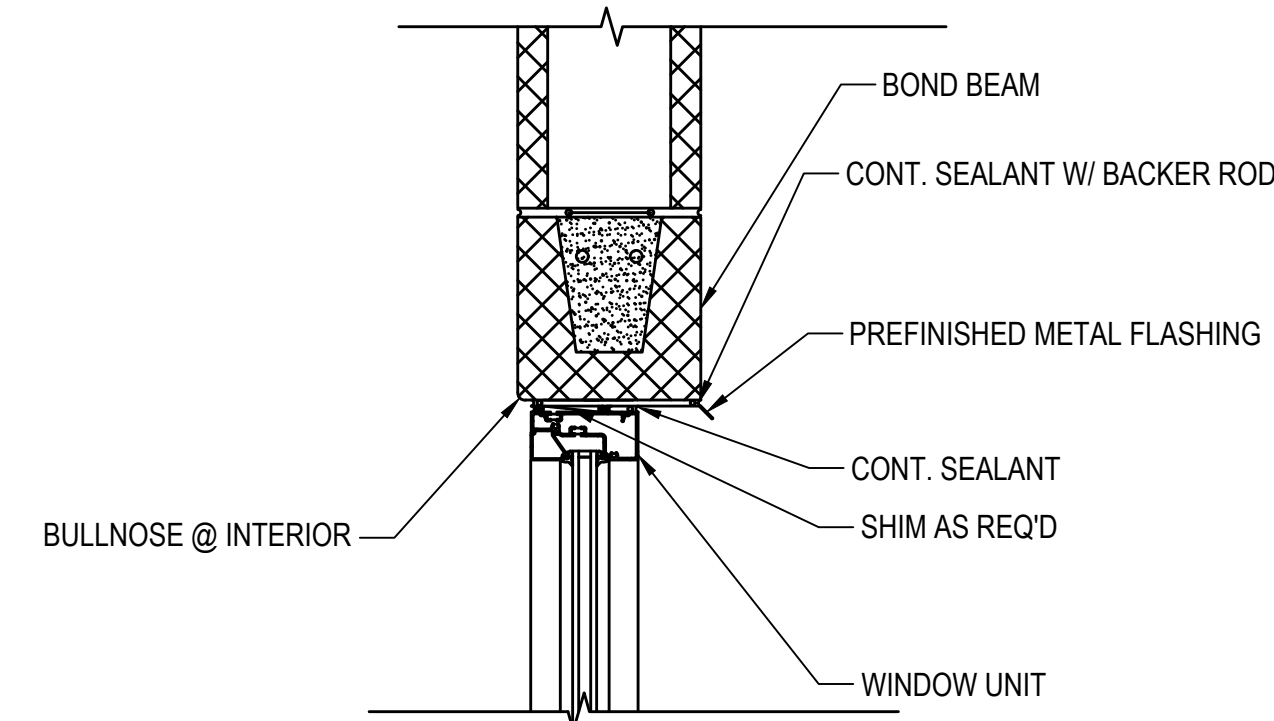
**D1 TYPICAL MASONRY LINTEL ELEVATION**  
1/2" = 1'-0"



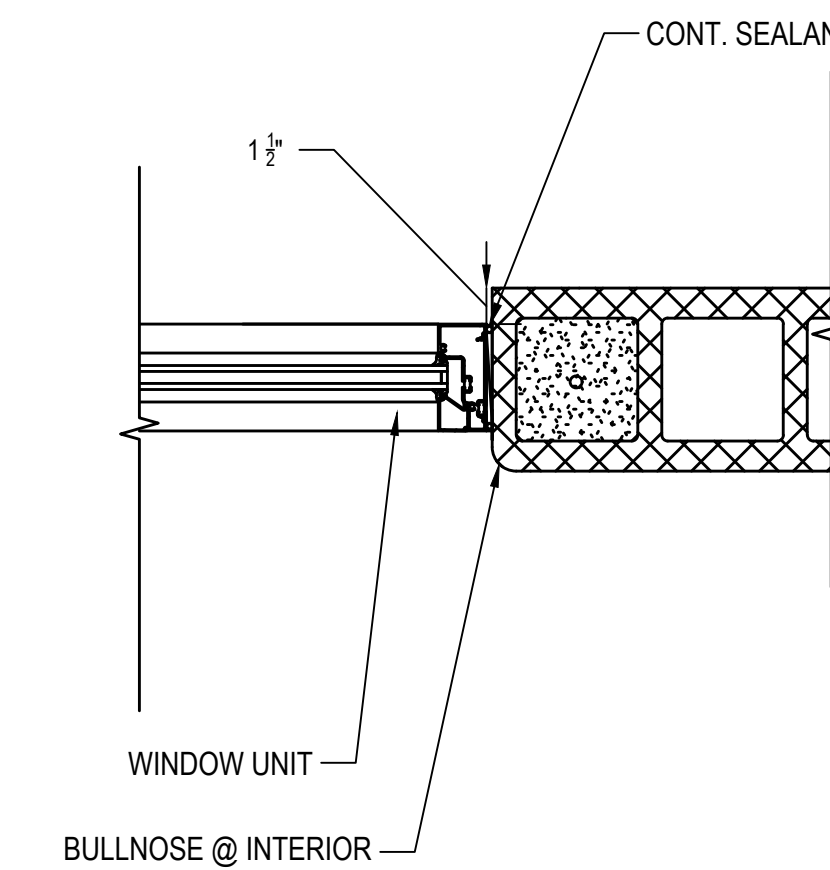
**D7 SEALANT JOINT AT ROOF SLAB CONNECTION**  
NTS



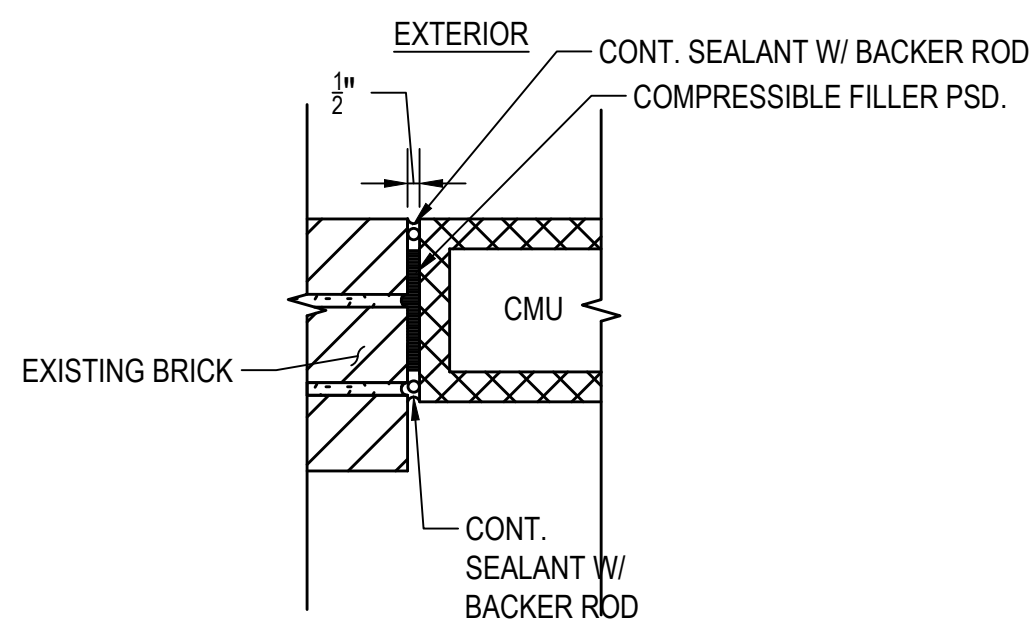
**D8 WINDOW SILL**  
NTS



**D9 WINDOW HEAD**  
NTS



**D10 WINDOW JAMB**  
NTS



**D11 SEALANT JOINT BETWEEN EXISTING BRICK AND CMU**  
NTS

REVISIONS:

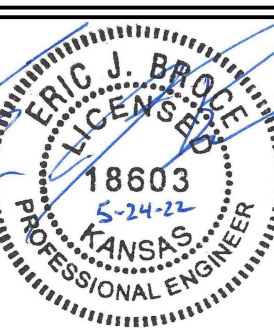
Environment & Infrastructure Solutions, Inc.  
245 N. WACO AVENUE, SUITE 110  
WICHITA, KANSAS 67202  
PHONE: 316-448-2711  
FAX: 316-448-2711

**wood.**

WELLHOUSE STR-003

EQUUS WELLFIELD SPURLINE REPLACEMENT  
GARY JANZEN, P.E. - CITY ENGINEER  
CITY OF WICHITA

DESIGNED BY: EJB  
DRAWN BY: AJM  
CHECKED BY: ---  
DATE: MAY 24, 2022



PROJECT NO.  
639020

SHEET NO.

30

OF 35