

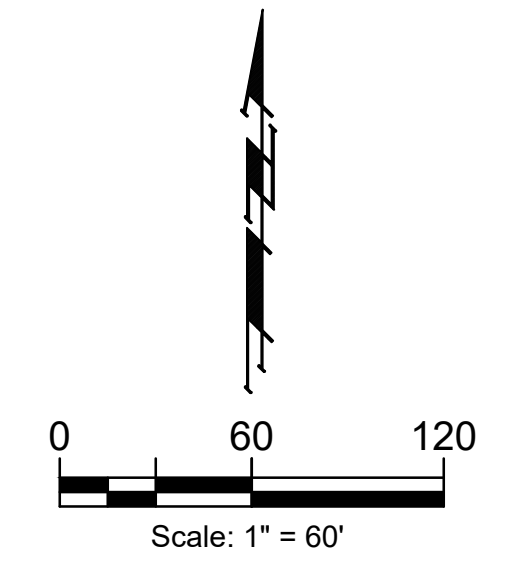
BENCHMARK #1:
Chiseled plus cut inside chiseled square, SE Cor. of catch basin on S. side of Apollo St., 32.5' W. to line of back of east curb of drive north, 11' E. to line of end of curb north, 103.2' ENE. of deflection cor., N. Line. Lot 9, Block A, Abilene Place Add.
Elev. = 1432.98 NAVD88

BENCHMARK #2:
Chiseled plus cut inside chiseled square, top of curb, most southerly SW Cor. of parking lot, 17.6' S. to back of N. curb of Apollo St., 34.7' WSW to centerline of light pole base, 114.3' E. & 143.5' N. of NW Cor., Reserve "A", Abilene Place Add.
Elev. = 1435.32 NAVD88

EARTH WORK TOTALS (Unadjusted for shrink & swell)
(for information only)

	Excavation	Fill
Reserve "B" Pond	34,589	-
Reserve "C" Pond	21,672	-
Mass Grading	26,656	36,925
Total Earthwork	82,917	36,925

NOTE:
Existing trees shall be trimmed/removed only as necessary for construction. Trimming will only be permitted with chainsaws. Trees not in direct conflict with proposed new construction shall remain and be protected from damage. All removal/trimming shall be included in "Site Clearing"

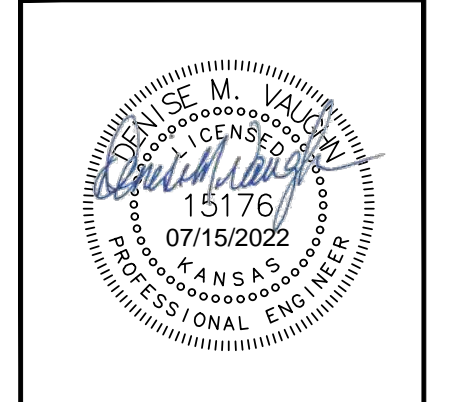
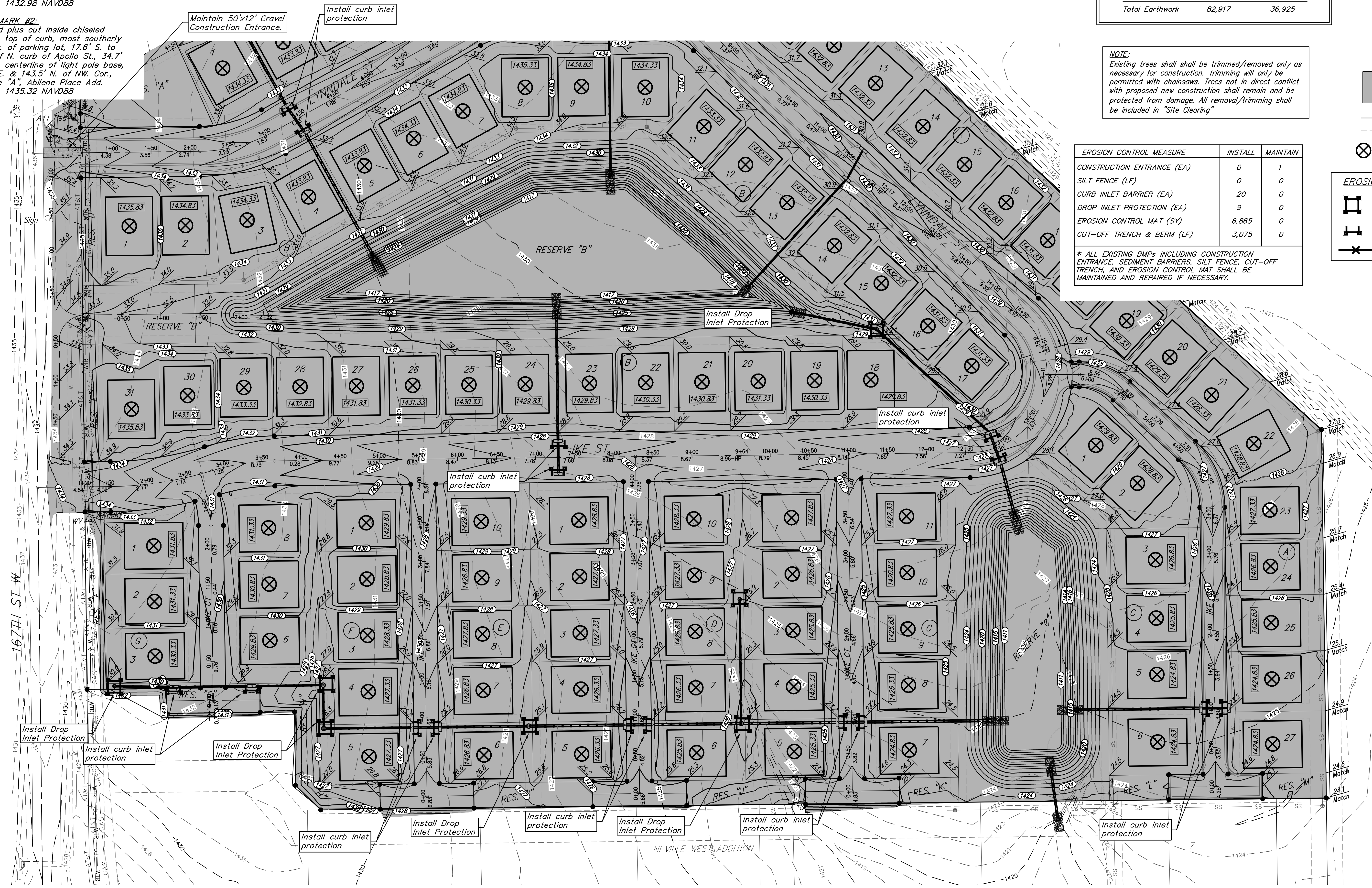


- Area to be graded
- Proposed Grade
- Existing Grade
- ⊗ - Compaction Testing Location

EROSION CONTROL MEASURE	INSTALL	MAINTAIN
CONSTRUCTION ENTRANCE (EA)	0	1
CURT FENCE (LF)	0	0
CURB INLET BARRIER (EA)	20	0
DROP INLET PROTECTION (EA)	9	0
EROSION CONTROL MAT (SY)	6,865	0
CUT-OFF TRENCH & BERM (LF)	3,075	0

* ALL EXISTING BMPs INCLUDING CONSTRUCTION ENTRANCE, SEDIMENT BARRIERS, SILT FENCE, CUT-OFF TRENCH, AND EROSION CONTROL MAT SHALL BE MAINTAINED AND REPAIRED IF NECESSARY.

- EROSION CONTROL LEGEND**
- DROP INLET PROTECTION
 - CURB INLET PROTECTION
 - SILT FENCING



B

BAUGHMAN COMPANY

315 Ellis St.
Wichita, KS 67211
316-262-7271
BaughmanCo.com

ABILENE PLACE ADDITION

MASS GRADING/ EROSION CONTROL

STORM WATER DRAIN IMPROVEMENTS

PROJECT NUMBER:

DESIGN: DMV DRAWN: JAK

DATE: Apr. 19, 2022

SHEET **14** OF **30**

File: E:\Projects\Abilene Place Addition_20-03-19540\Engineering\Phase 1\SWD_21-03-ER78\SWD_21-03-ER78.dwg