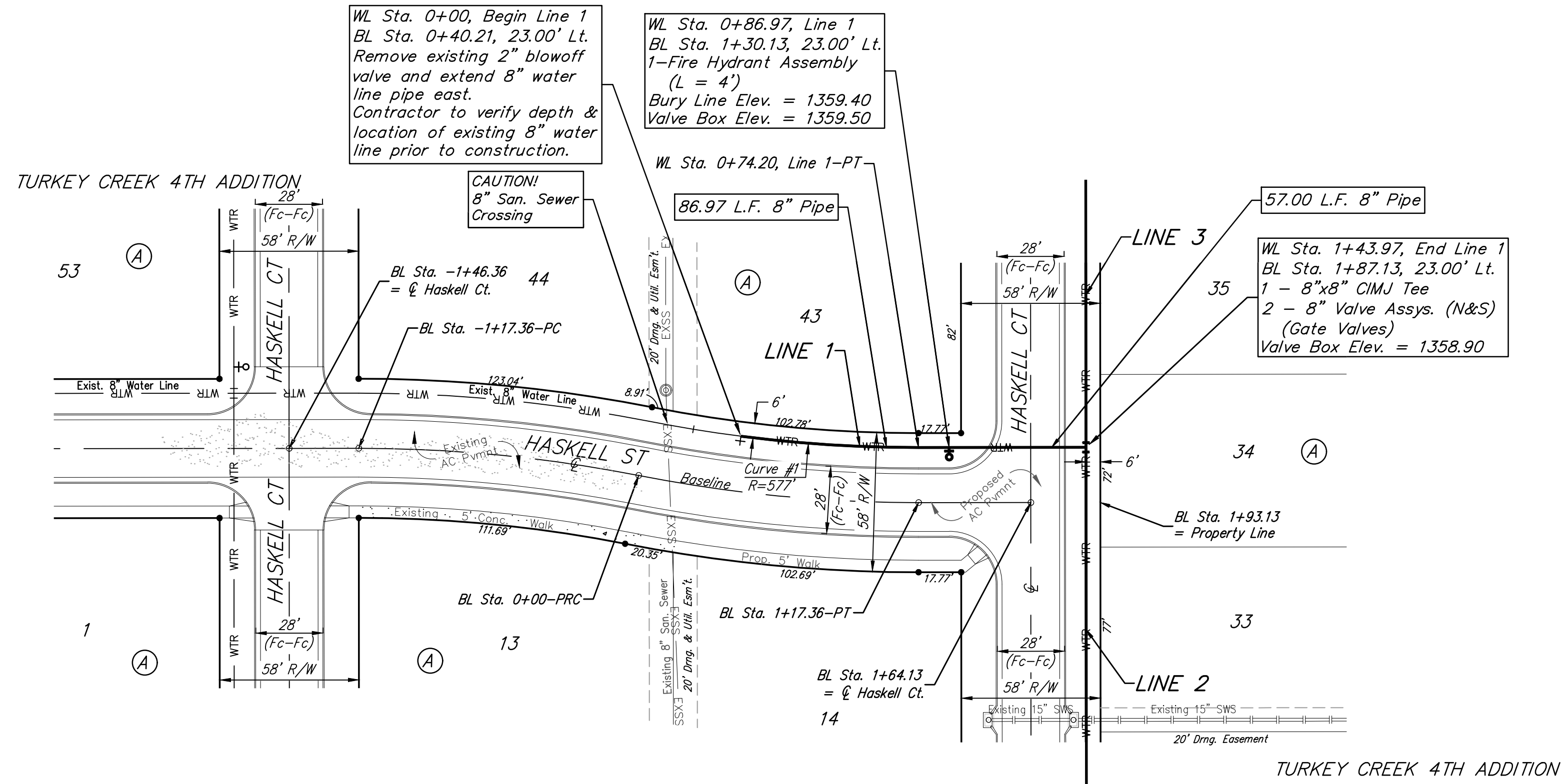


**BENCHMARKS:**  
 135th St. W. & Pawnee  
 City of Wichita Benchmark Disc,  
 Northeast Corner of Intersection  
 On SW Corner of Concrete Base  
 of High Line Pole.  
 Elev. = 1359.65 NGVD29

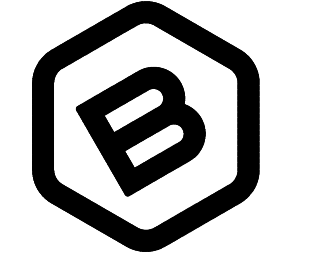
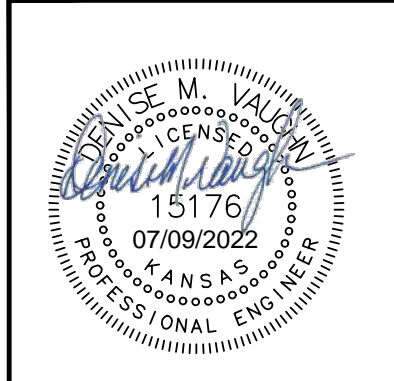
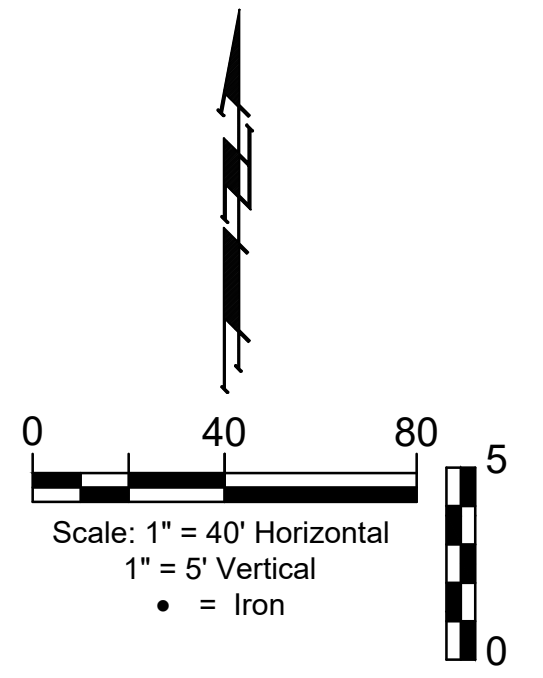
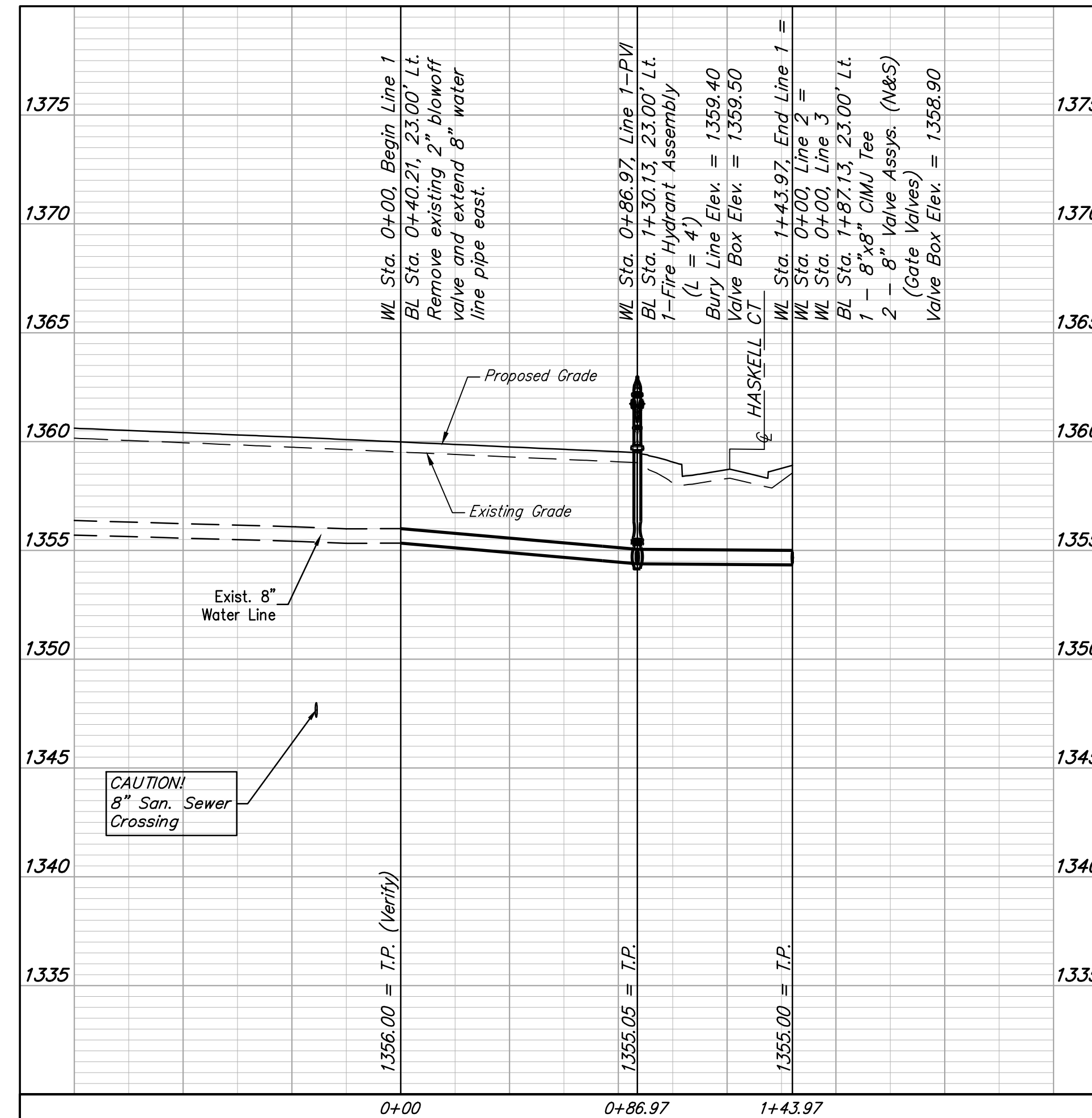
City of Wichita Benchmark Disc,  
 0.4 Mi. South of Kellogg On  
 135th St. W., West Side of  
 Concrete Base for High Line  
 Pole, West of K.G.&E.  
 Substation, 135'± South of  
 Railroad Tracks On East Side of  
 135th St. W.  
 Elev. = 1367.77 NGVD29



Curve #1  
 Curve Data Based on Centerline of Pipe  
 Rad. = 577' Delta = 722°04' Tangent = 37.15'  
 Arc = 74.20' L.C. = 74.15' Def./Ft. = 2.97889 Min.

Station	Arc	Chord Lengths		Total Defl.
		8' Left	Defl.	
0+00.00	-	-	0'00'00"	0'00'00"
0+25.00	25.00'	24.65'	1'14'28"	1'14'28"
0+50.00	25.00'	24.65'	1'14'29"	2'28'57"
0+74.20	24.20'	23.86'	1'12'05"	3'41'02"

Baseline =  $\phi$  Haskell St



**BAUGHMAN COMPANY**  
 315 Ellis St.  
 Wichita, KS 67211  
 316-262-7271  
 BaughmanCo.com

TURKEY CREEK 4TH  
 ADDITION - PHASE 1B

**LINE 1**

WATER DISTRIBUTION  
 SYSTEM

PROJECT NUMBER:  
 448-2020-016823

DESIGN: DMV DRAWN: JAK  
 DATE: June 23, 2022

SHEET OF  
**4 16**