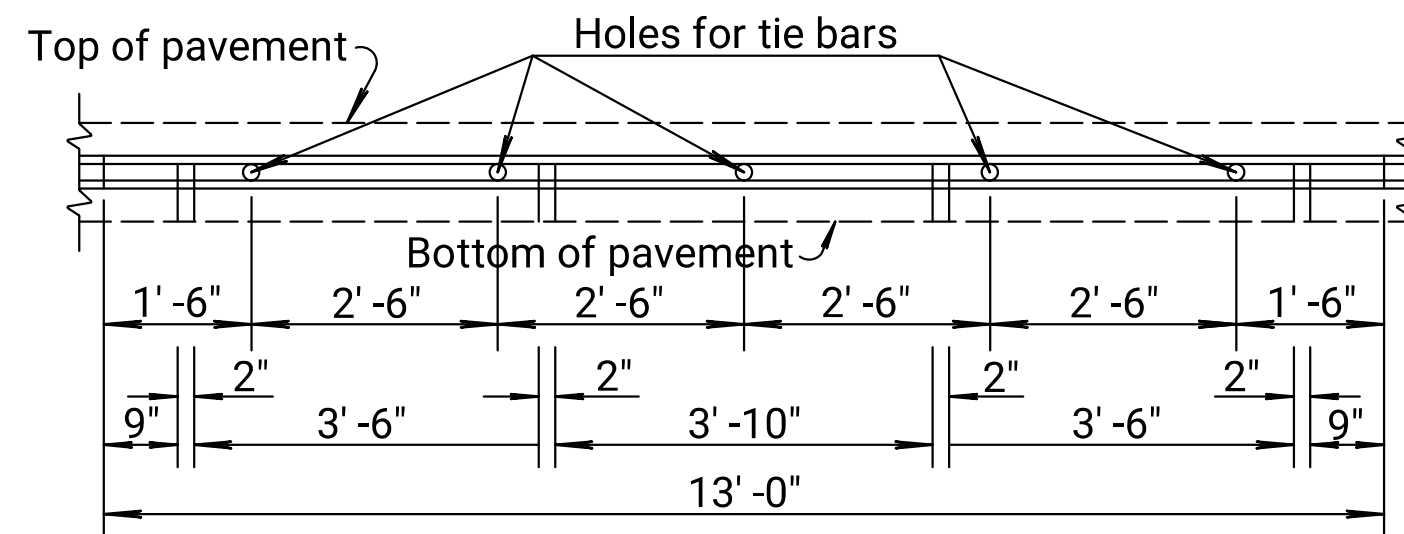


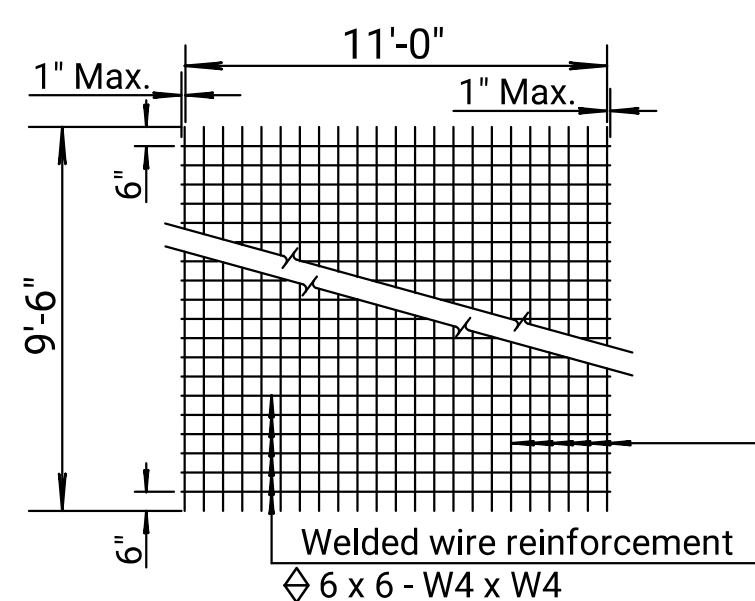
To be used only against forms. Shall not extend through contraction joints.

**METAL STRIP FOR
LONGITUDINAL CONSTRUCTION JOINT (10'-0")**



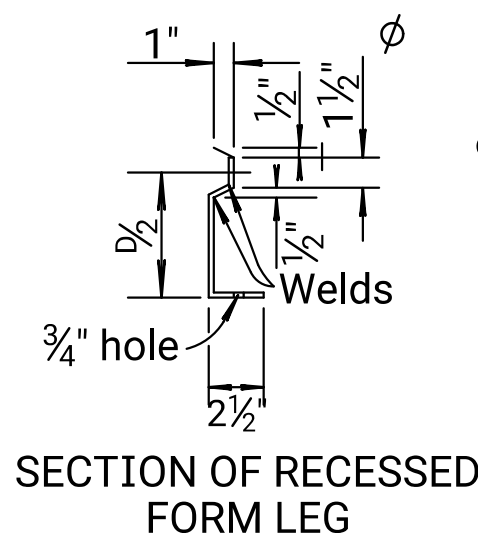
To be used only against forms. Shall not extend through contraction joints.

**METAL STRIP FOR
LONGITUDINAL CONSTRUCTION JOINT (13'-0")**



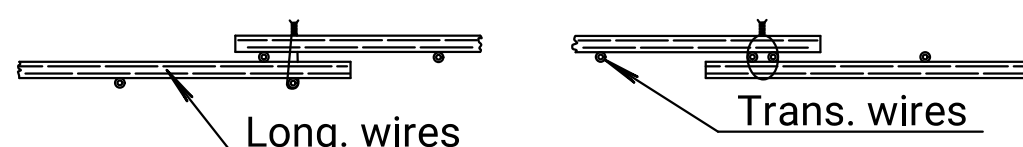
**TYPICAL SHEET OF WELDED WIRE REINFORCEMENT
FOR SPECIAL BRIDGE APPROACH PAVEMENT**

◆ Note: Epoxy coated #3 bars longitudinally @ 12" ctrs. & #3 bars transversely @ 18" ctrs. may be substituted for each layer of epoxy coated welded wire reinforcement.



**SECTION OF RECESSED
FORM LEG**

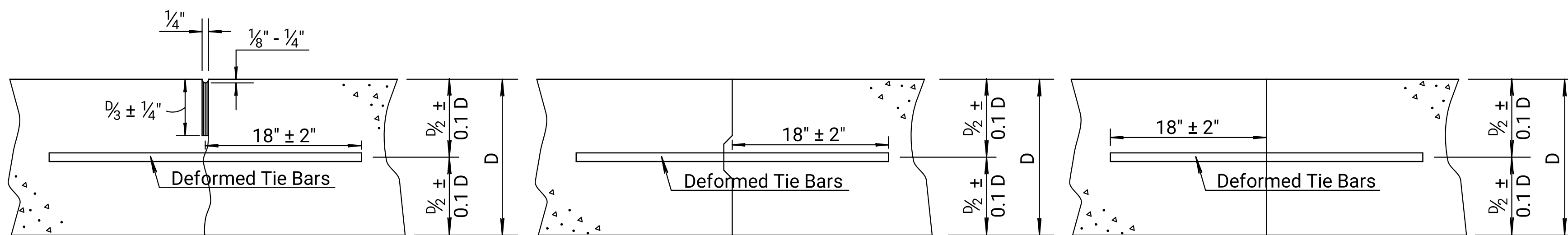
∅ Snap-in leg or other approved designs may be used in lieu of welded leg.



DETAIL OF LAP FOR WELDED WIRE REINFORCEMENT

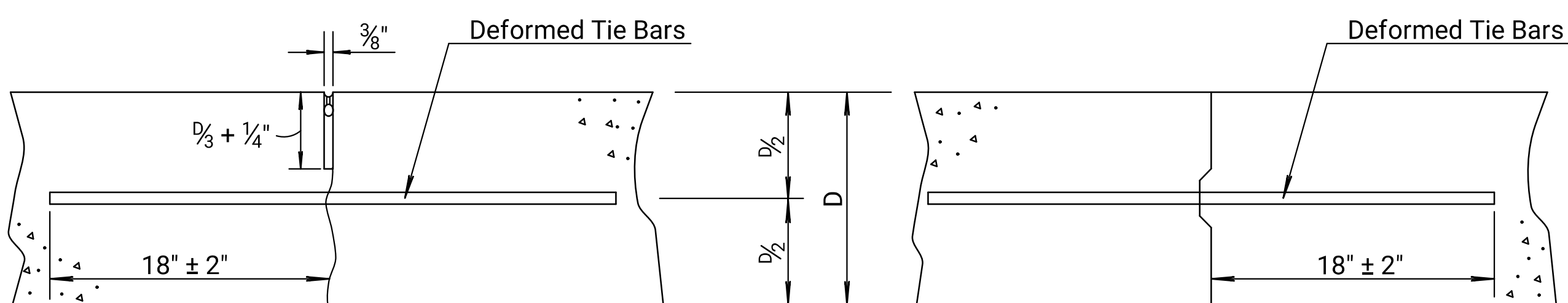
The lap shall extend beyond the first transverse or bag wire of each sheet.

The sheet shall be wired securely at the edges and at intervals not to exceed 2'-6" for the full width of the sheet. Approximate weight of welded wire reinforcement = 58 lbs. per 100 sq. ft. Other methods for fastening the sheets of welded wire reinforcement at the laps may be used with the approval of the Engineer.



LONGITUDINAL JOINTS

Note: For longitudinal construction joints the contractor has the option of using either the keyed or butt type. Place deformed tie bars mid-depth of the shoulder.



TRANSVERSE JOINTS

Note: A construction joint is required when the concrete placement has been interrupted for a substantial length of time or at the end of a day's placement.

GENERAL NOTES

All work shall be done in conformity with the Standard Specifications applicable to the project.

The cost of all bars and joint material shown on this sheet is to be included in the bid price for Concrete Pavement.

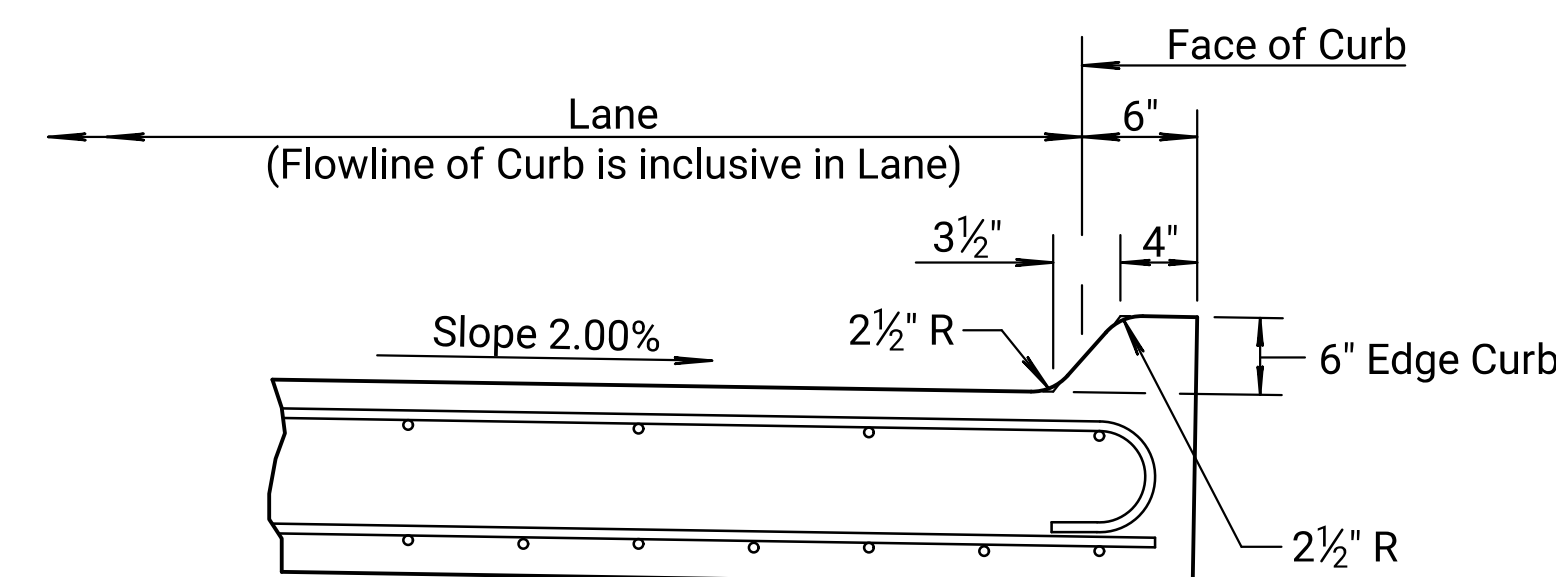
At each planned transverse joint location, a 4 to 6 inch wide strip of the pavement surface shall be protected from the texturing operation to provide a transverse textureless surface centered over the joint sawcut.

All sawed joints on this project shall be filled with sealant in accordance with Standard Specifications.

The 6 inch edge curb shall be constructed integral with the approach slab shoulder.

All materials and work required for this construction shall be Subsidiary to the concrete approach slab.

Tie bars shall be evenly spaced along the length of the slab and no tie bars shall be within 12" of contraction joint.



SECTION THRU CURB AT END OF APPROACH

NOTE:
6" Curb is to be used on the approach slab. See approach slab details and barrier transition details for limits.

PREPARED BY

771 NORTH WACO
SUITE 200
WICHITA, KANSAS 67203
PHONE: 316-352-9333

CONSULTANTS:

AMIDON AVE. BRIDGE
AT ARKANSAS RIVER
WICHITA, KANSAS

REVISIONS:	MARK	DATE	DESCRIPTION

PROJ NO: E1010-4025062
SCALE:
DATE: 07/08/2022
DESIGNED BY: JBM
DRAWN BY: JBM
CHECKED BY: WBS

SHEET TITLE:
**MISCELLANEOUS
DETAILS
FOR CONCRETE
BRIDGE APPROACH
PAVEMENT**

SHEET NO.
25
SHEET 25 OF 128

Adapted from Standard Drawing RD711