

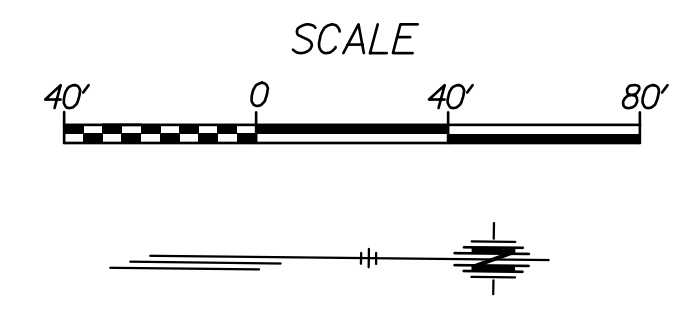
LEGEND



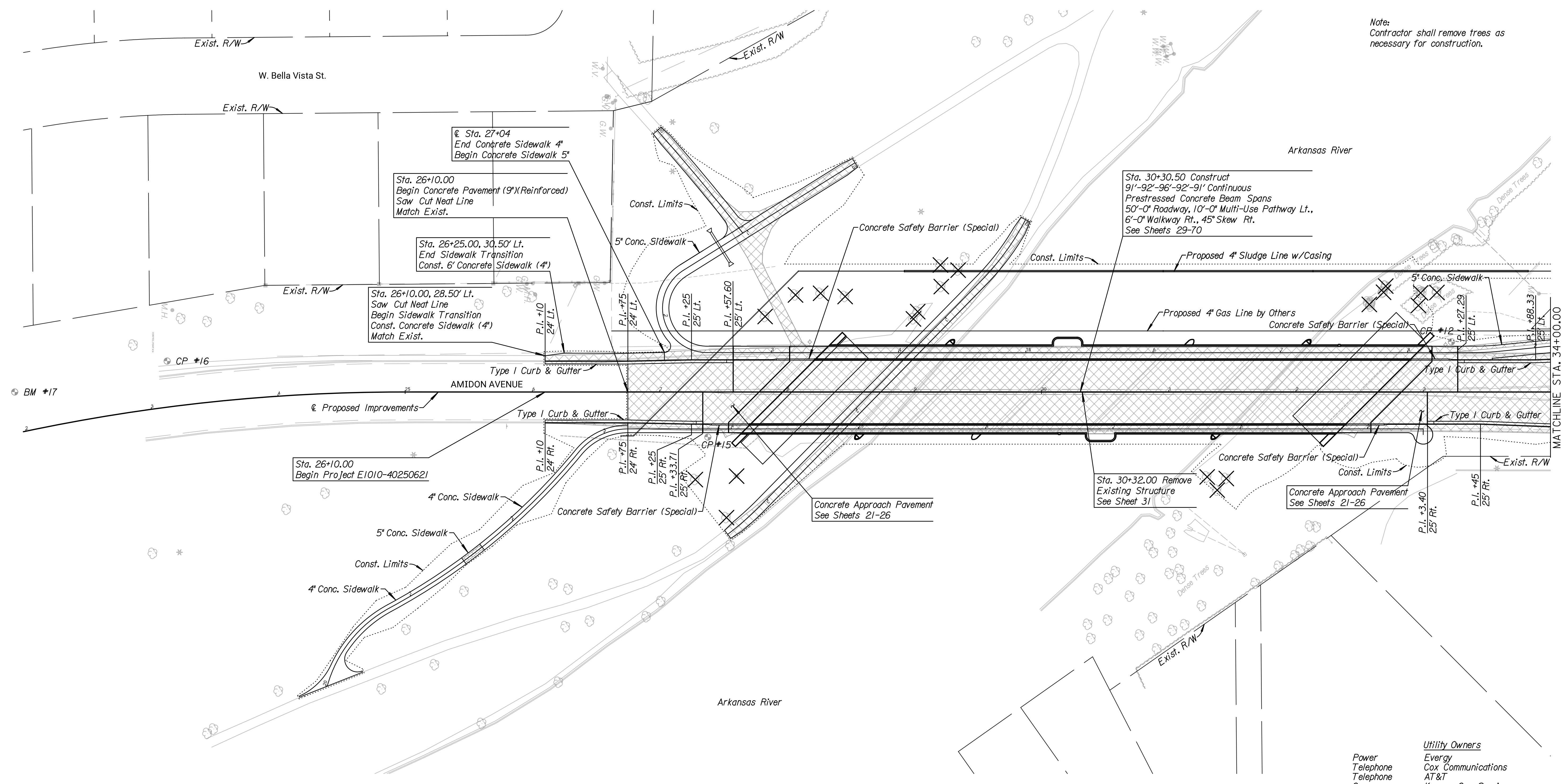
Pavement Removal



Tree Removal



Note:
Contractor shall remove trees as necessary for construction.



BM - *17
Set chiseled "□" in sidewalk 1' west of light pole, 55' northeast of guy wire.
N 1641199.00
E 1695803.00
31.97' Lt., Sta. 21+97.60, Elev. = 1,310.52

CP - *16
Set 5/8" Rebar
1. 3' W of W edge of sidewalk
2. 150' SE of half pipe backyard.
N 1641173.34
E 1695922.54
35.98' Lt., Sta. 23+17.00, Elev. = 1,311.25

CP - *15
Set 5/8" rebar
1. 5' E of back of curb
2. 8' S of SE corner of abut wingwall
SE corner of bridge.
N 1641228.47
E 1696348.03
Rt. Sta. Elev. = 1,315.22

Utility Owners
Power: Evergy
Telephone: Cox Communications
Telephone: AT&T
Gas: Kansas Gas Service
Sludge Line: City of Wichita Public Works
Water: City of Wichita Water Dept.
Storm Water: City of Wichita Storm Sewer
Sanitary Sewer: City of Wichita Sanitary Sewer

CP - *12
Set 5/8" rebar
1. 5' NW of lightpole
2. 4' NW of gas sign at NW corner of bridge.
N 1641147.18
E 1696931.58
39.47' Lt., Sta. 33+22.22, Elev. = 1,314.86

Tran Systems
245 NORTH WACO
SUITE 222
WICHITA, KANSAS 67202
PHONE: 316-303-3000
FAX: 316-462-5629

CONSULTANTS:

AMIDON AVENUE BRIDGE at ARKANSAS RIVER
WICHITA, KANSAS
CITY OF WICHITA

REVISIONS:	MARK	DATE	DESCRIPTION

PROJ NO: E1010-40250621
SCALE: 1"=40'
DATE: 7/13/2022
DESIGNED BY: CKC
DRAWN BY: CKC
CHECKED BY: MDB

SHEET TITLE:
AMIDON AVENUE PLAN STA. 26+10.00 TO STA. 34+00.00

SHEET NO.
5
SHEET 5 OF 128

danawano 7/13/2022 10:53:55 AM c:\tran\systems\paw\danawano\108357\C-RDWH\101.LDGN