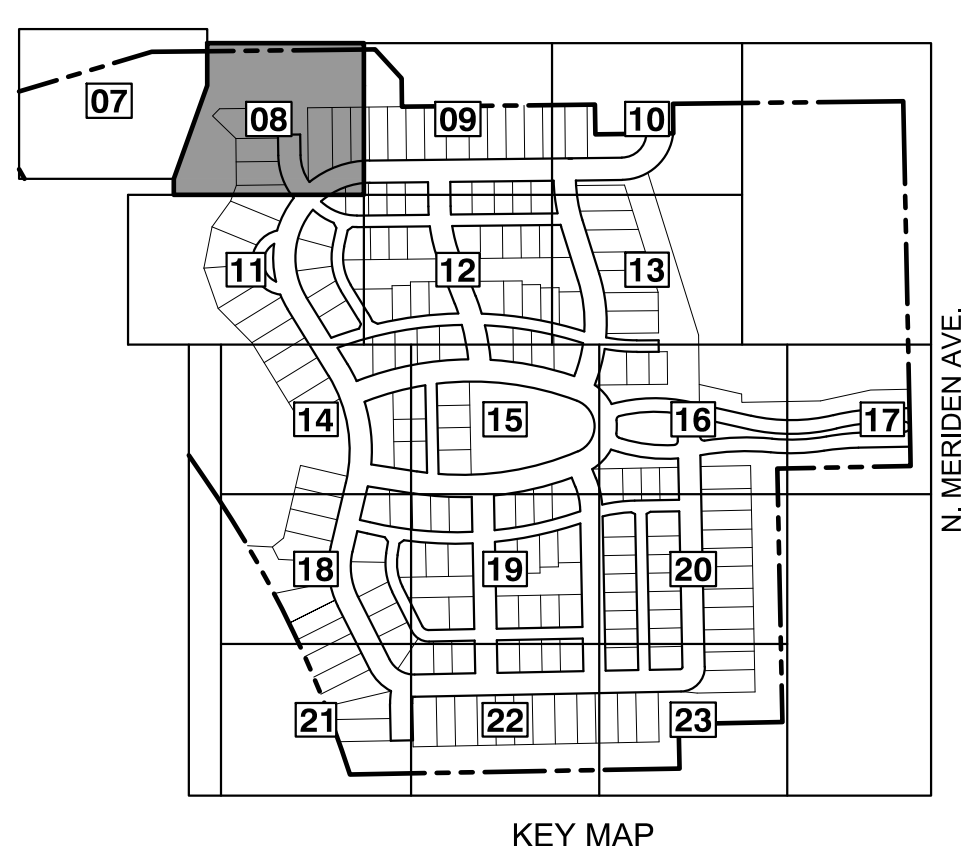
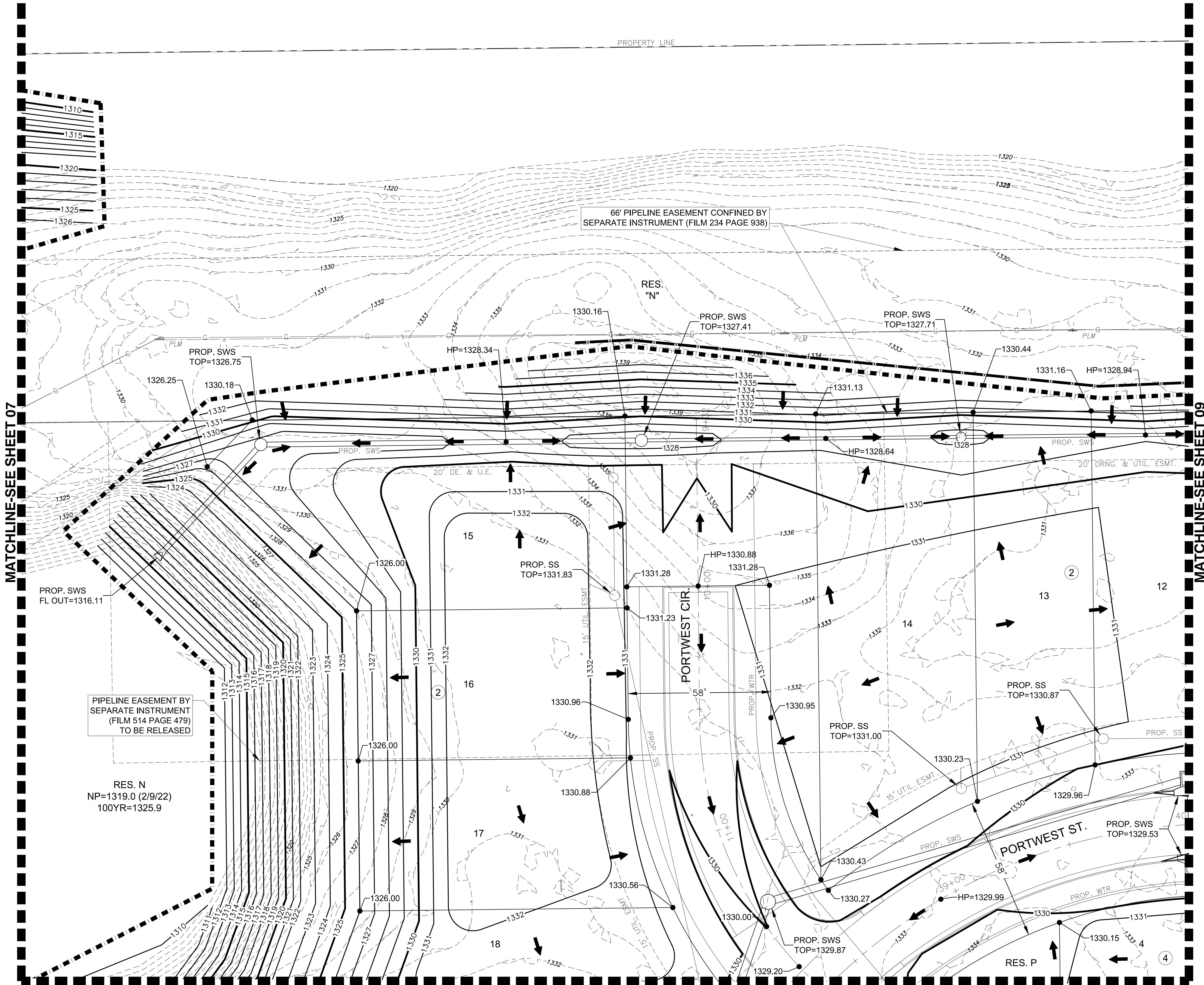
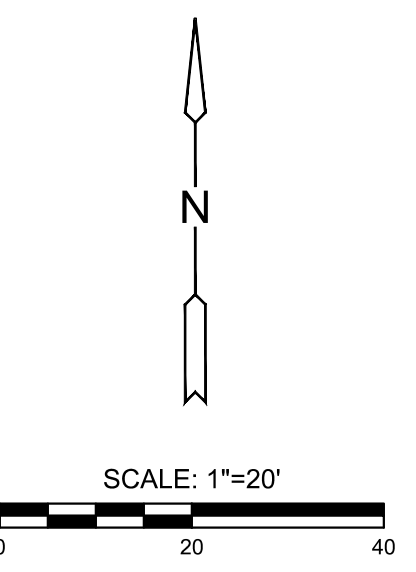


J:\PROJECTS\2022\12\10\10427_PERFECTION_COURTYARDS_AT_MOORINGS\DWG\10427_CAD\SH1\12\1427-054-1203.DWG
 PLOTTED: Monday, January 09, 2023 @ 08:15AM



NOTES:
VERTICAL DATUM USED IS NAVD88.

- LEGEND**
- 1250 --- EXISTING CONTOUR
 - 1250 — PROPOSED CONTOUR
 - W — PROP. WATERLINE
 - O — PROP. STORMWATER SEWER
 - S — PROP. SANITARY SEWER
 - W — EXIST. STORMWATER SEWER
 - S — EXIST. SANITARY SEWER
 - G — EXIST. UNDERGROUND GASLINE
 - UGT — EXIST. UNDERGROUND TELEPHONE
 - UGE — EXIST. UNDERGROUND ELECTRICAL
 - OHE — EXIST. OVERHEAD ELECTRICAL
 - --- LIMITS OF GRADING
 - 1329.86 SPOT ELEVATIONS
 - — TREE PROTECTION



MASS GRADING PLANS FOR
COURTYARDS AT THE MOORINGS
 WICHITA, KS

©2023
 MKEC Engineering
 All Rights Reserved
 www.mkec.com
 These drawings and their contents, including, but not limited to, all concepts, designs, & ideas are the exclusive property of MKEC Engineering (MKEC), and may not be used or reproduced in any way without the express consent of MKEC.

GRADING PLAN

PROJECT NO.	458-2022-085511
DATE	JAN. 2023
SCALE	1"=20'
DESIGNED	DML
DRAWN	C-JL
CHECKED	SPE

NO.	REVISION	DATE

SHEET NO.
08 OF 43