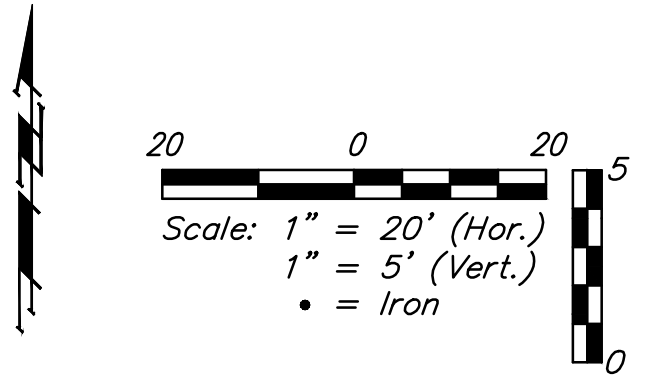
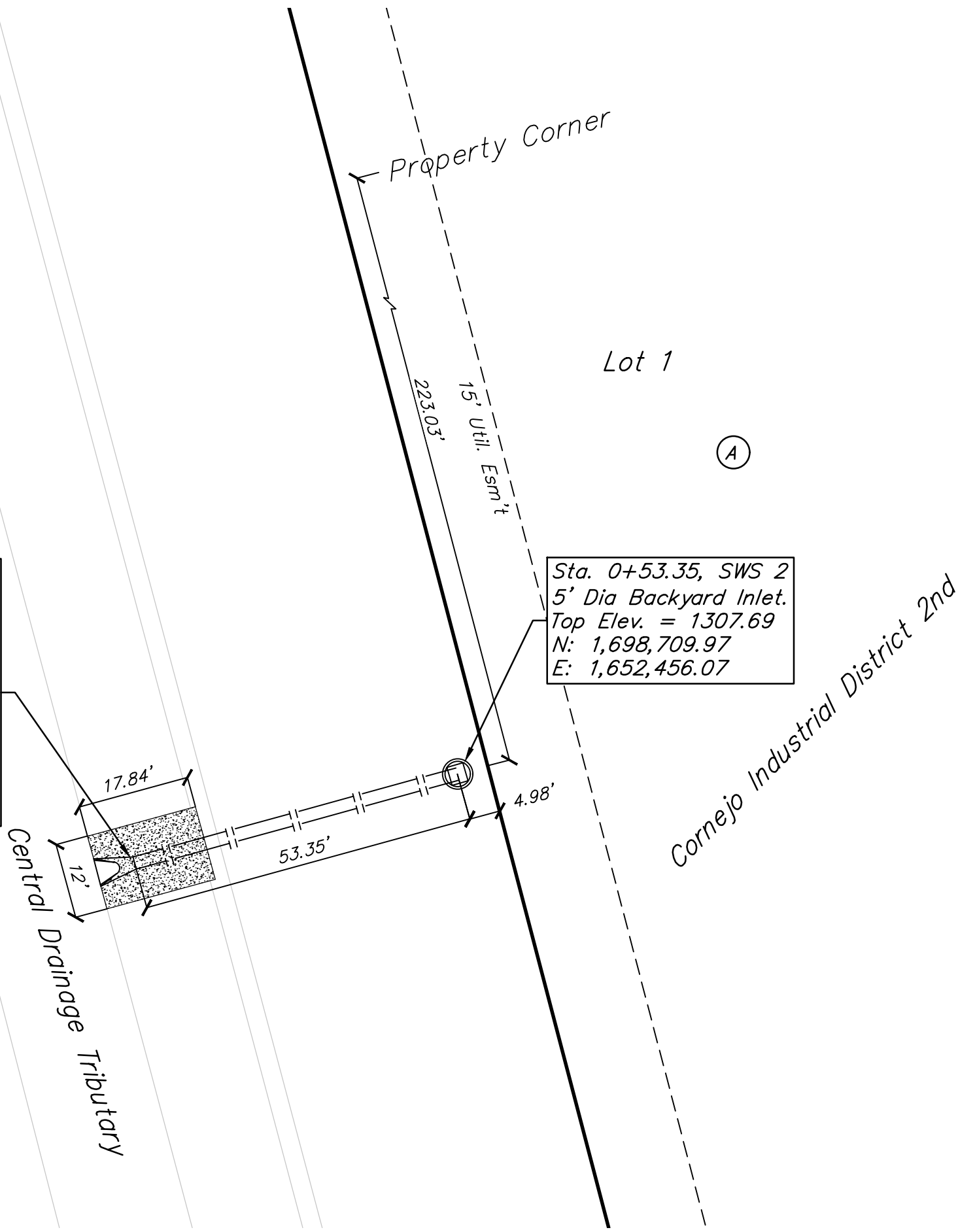


Sta. 0+00.00, SWS 2  
Sawcut and remove concrete apron, as needed. Install new 24" Endsection with Rein. Conc. Apron. Field verify Top of Vertical Concrete Wall match Endsection FL to TOW. Cost of Apron removal and reinstallation to be subsidiary to End Section cost. Top Elev. = 1301.00  
N: 1,698,695.80  
E: 1,652,404.63

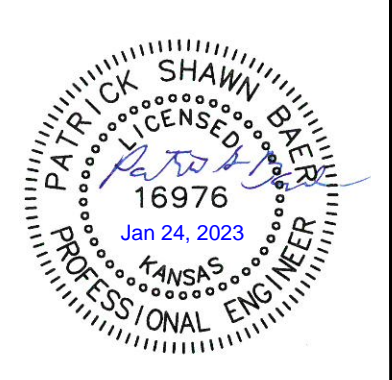
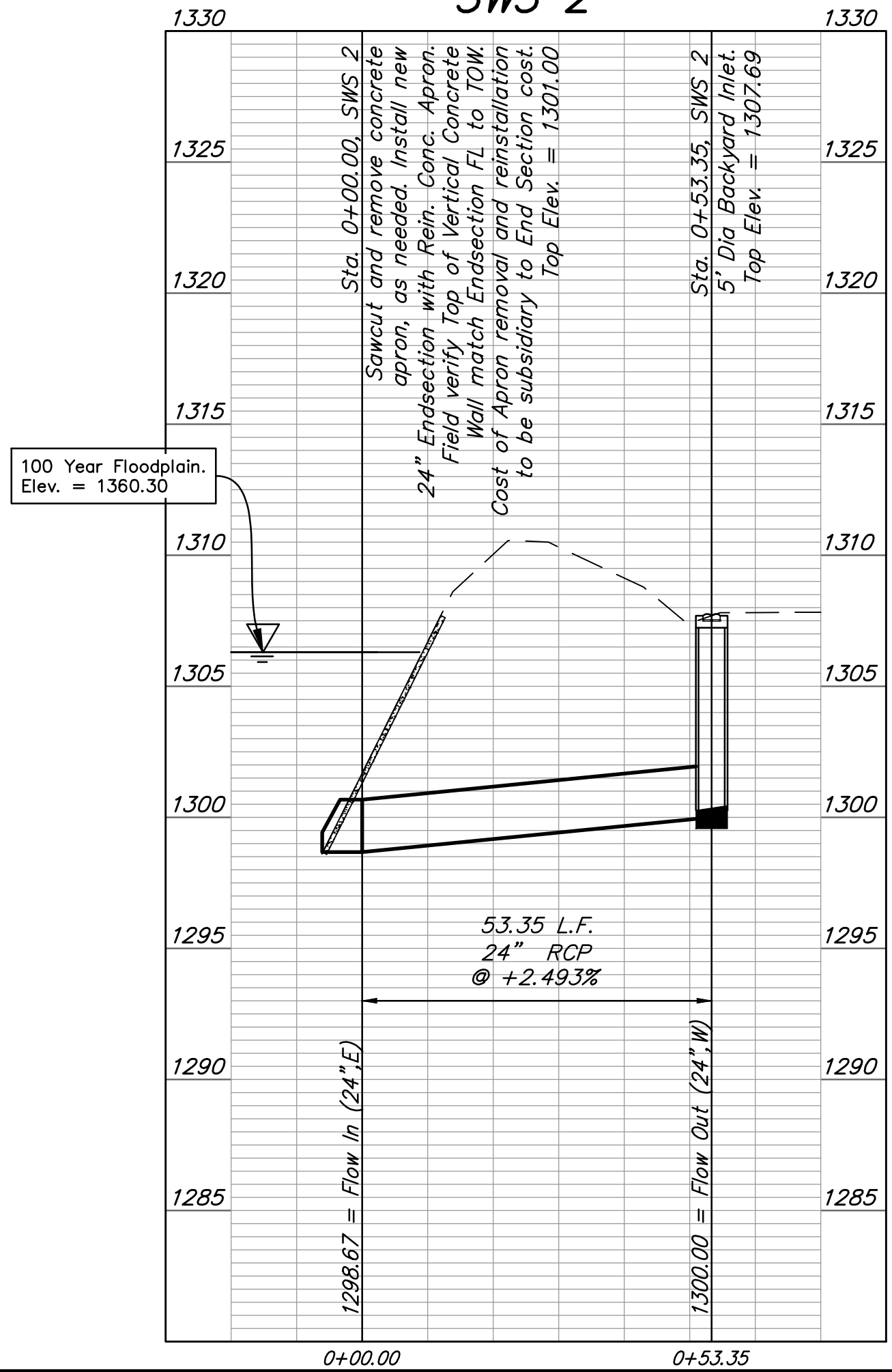
Sta. 0+53.35, SWS 2  
5" Dia Backyard Inlet. Top Elev. = 1307.69  
N: 1,698,709.97  
E: 1,652,456.07



### BENCHMARKS

- BM- #1:  
Square cut on top of South curb of 21st St. N. 334'± West and 32'± South of the intersection of 21st St. N. and Cleveland Ave. Elev. = 1307.56(NAVD88)
- BM- #2:  
Square cut on top of South concrete pad of monitoring well 26'± East and 51'± South of the intersection of 21st St. N. and Cleveland Ave. Elev. = 1308.70(NAVD88)
- BM- #3:  
C.O.W BM Disc on top of South concrete wall 918'± West and 147'± North of the intersection of 21st St. N. and Cleveland Ave. Elev. = 1312.58(NAVD88)

### SWS 2



**BAUGHMAN COMPANY**  
315 Ellis St.  
Wichita, KS 67211  
316-262-7271  
BaughmanCo.com

CORNEJO INDUSTRIAL DISTRICT 2nd  
**Line 2 & 3**

STREET IMPROVEMENTS Pavement Improvements	
PROJECT NUMBER:	472-2021-085727
DESIGN: PSB	DRAWN: JA
DATE:	Jan. 24, 2023
SHEET	OF
<b>14</b>	<b>32</b>