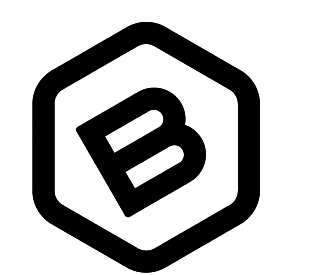
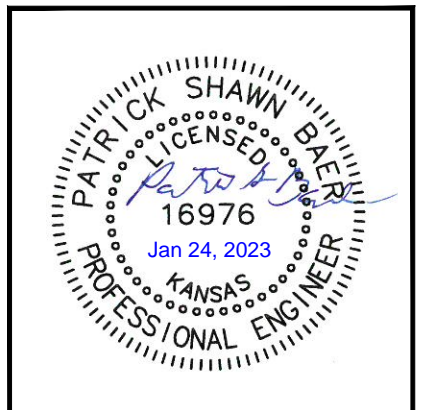
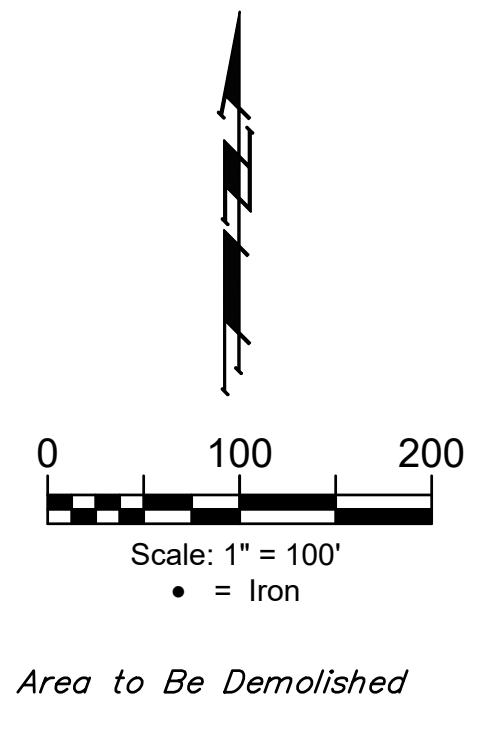
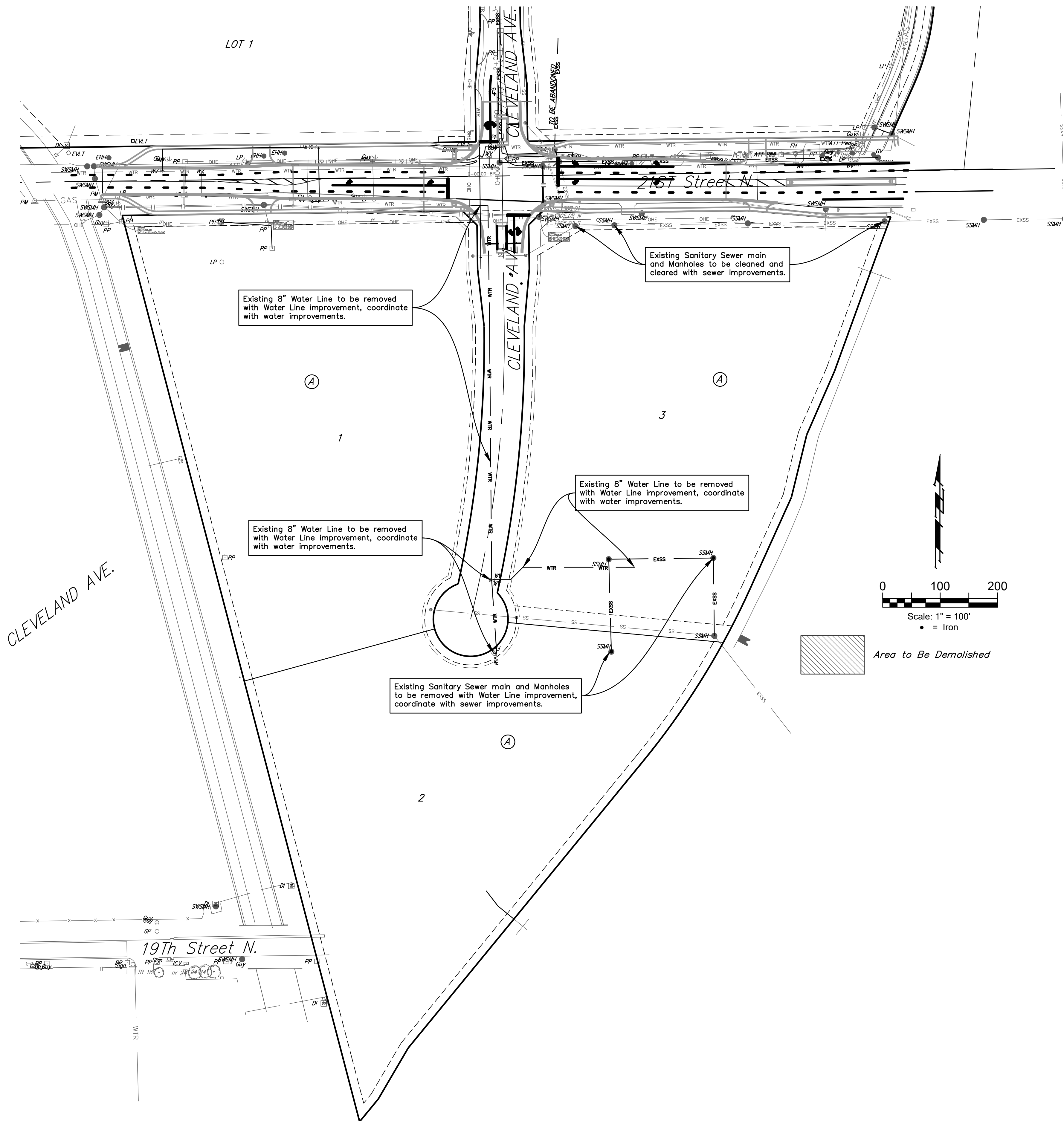


BENCHMARKS:
 Square Cut On Top of South Curb of 21st St. N.
 334'± West and 32'± South of the Intersection of 21st St. N. and Cleveland Ave.
 Elev. = 1307.56(NAVD88)

Square Cut On Top of South Concrete Pad of Monitoring Well 26'± East and 51'± South of The Intersection of 21st St. N. and Cleveland Ave.
 Elev. = 1308.70(NAVD88)

GENERAL NOTES:

- Existing utilities and their locations, as shown on the plans, represent the best information obtainable for design. Location information has been obtained from the various utility companies and is either from company record drawings or company provided field locations. The Contractor will be required to work around existing utilities which do not conflict with proposed construction.
- Traffic affected by construction on this project shall be handled in accordance with the latest edition of the Manual on Uniform Traffic Control Devices (MUTCD).
- The Contractor shall provide appropriate signage throughout the sequence of construction clearly stating where construction entrances are.
- The Contractor shall take all necessary precautions to protect the general public during the construction and demolition process. This may include the use of fences and signage.
- The Contractor shall notify adjacent landowners prior to proceeding with any construction work on landowner's property.
- The Contractor shall dispose of all site debris and trash in addition to all removed materials in a safe, legal, and responsible manner.
- The contractor shall remove all existing private signs and footings located on site as necessary for construction.
- Where existing drive approaches are to be removed, the contractor shall construct new Typ. 6" concrete curb and gutter to match existing street. Removal includes base course.
- All existing pavement on site shall to be removed shall be removed and disposed of in a safe, legal, and responsible manner. Removal shall include base course and sub grade as necessary.
- The Contractor shall coordinate with local utility company on the removal of electric service lines, meters and poles located on site. Contractor shall ensure that all services are located and accounted for before disconnections begin to ensure that adjacent businesses are not affected.
- The Contractor shall coordinate with local gas utility on the removal of gas services and meters located on site. Contractor shall ensure that all services are located and accounted for before disconnections begin to ensure that adjacent businesses are not affected.
- The Contractor shall coordinate with AT&T and any other on-site telecommunications providers on the removal of telecommunications services on site if called for. Contractor shall ensure that all services are located and accounted for before disconnections begin to ensure that adjacent businesses are not affected.
- Asbestos abatement must be conducted by a Kansas-licensed abatement contractor.
- Assume all fluorescent light ballasts contain PCBs until they are removed and a non-PCB label is identified.
- When fluorescent bulbs are removed, fewer than 100 bulbs accumulated in a calendar month in Kansas can be manage as a routine solid waste. If more than 100 bulbs are accumulated, they must be disposed as universal waste. Broken bulbs should be cleaned up immediately, and the glass placed in a plastic bag for disposal.



BAUGHMAN COMPANY
 315 Ellis St.
 Wichita, KS 67211
 316-262-7271
 BaughmanCo.com

CORNEJO INDUSTRIAL DISTRICT

DEMOLITION PLAN

Street Paving Improvements	
PROJECT NUMBER:	472-2021-085727
DESIGN: PSB	DRAWN: HJW
DATE:	Jan. 24, 2023
SHEET	OF
16	32

File: E:\Projects\Cornejo Industrial District_2nd (21-10-F717)\Engineering\Phase 1\STRISTR_2.dwg