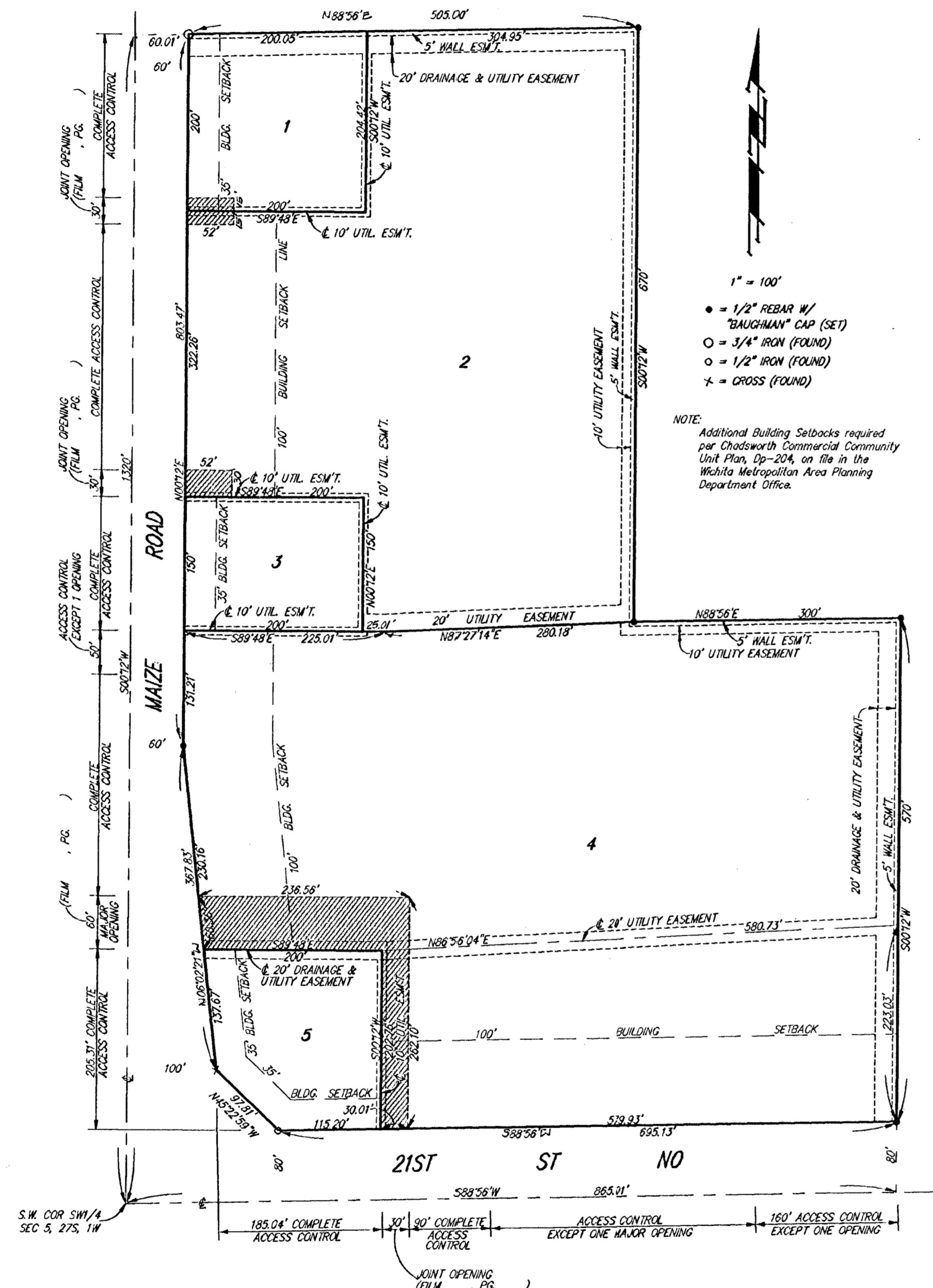


CHADSWORTH COMMERCIAL 2ND ADDITION

WICHITA, SEDGWICK COUNTY, KANSAS



1" = 100'

- = 1/2" REBAR W/ "BAUGHMAN" CAP (SET)
- = 3/4" IRON (FOUND)
- = 1/2" IRON (FOUND)
- * = CROSS (FOUND)

NOTE:
Additional Building Setbacks required per Chadsworth Commercial Community Unit Plan, 99-204, on file in the Wichita Metropolitan Area Planning Department Office.

State of Kansas) SS We, Baughman Company, P.A., Surveyors in Sedgwick County) do hereby certify that we have surveyed and platted "CHADSWORTH COMMERCIAL 2ND ADDITION", Wichita, Sedgwick County, Kansas, and that the accompanying plat is a true and correct exhibit of the property surveyed, described as and being a replat of Lots 1, 2, 3, 4, 5, 6, and 7, Chadsworth Commercial Addition, Wichita, Sedgwick County, Kansas.

All being situated in the SW 1/4 of Sec. 5, Twp. 27-S, R-1-W of the 6th P.M., Sedgwick County, Kansas.

Existing public easements and dedications being vacated by virtue of K.S.A. 12-512(b).

Baughman Company, P.A.

Gregory F. Severns
Gregory F. Severns, 7-12-95, Surveyor
KANSAS LAND SURVEYOR

This plat of "CHADSWORTH COMMERCIAL 2ND ADDITION", Wichita, Sedgwick County, Kansas has been submitted to and approved by the Wichita-Sedgwick County Metropolitan Area Planning Commission, Wichita, Kansas. Dated this 29th day of June, 1995.

Wichita-Sedgwick County Metropolitan Area Planning Commission.

John W. McKay, Jr. Chairman
John W. McKay, Jr.
Marvin S. Krout Secretary
Marvin S. Krout



This plat approved and all dedications shown hereon accepted by the City Council of the City of Wichita, Kansas, this 1st day of August, 1995.

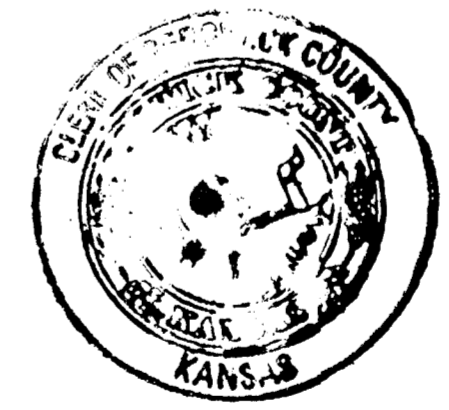


Bob Knight Mayor
Bob Knight
Pat Burnett Deputy City Clerk
Pat Burnett

Know all men by these presents that we, the undersigned, have caused the land described in the surveyors certificate to be platted into Lots to be known as "CHADSWORTH COMMERCIAL 2ND ADDITION", Wichita, Sedgwick County, Kansas. The utility easements are hereby granted as indicated for the construction and maintenance of all public utilities. The wall easements are hereby granted as indicated for the construction and maintenance of a private screening wall and utility main lines and service lines are allowed to cross these easements. The drainage and utility easements are hereby granted as indicated for drainage purposes and for the construction and maintenance of all public utilities. Access controls as depicted on the face of the plat are hereby granted to the City of Wichita, Kansas. The permitted entrance locations shall be as determined by the City Engineer of the City of Wichita, Kansas.

Bruce A. Pearson *Esther L. Pearson*
Bruce A. Pearson Esther L. Pearson

Entered on transfer record this 14th day of August, 1995.



Susan E. Crockett-Spoon County Clerk
Susan E. Crockett-Spoon

#1470844

State of Kansas) SS The foregoing instrument acknowledged before me, this 12th day of July, 1995, by Bruce A. Pearson and Esther L. Pearson, husband and wife.

Philip J. Meyer Notary Public
PHILIP J. MEYER

My App'l. Exp. 5/5/97

PHILIP J. MEYER
NOTARY PUBLIC
STATE OF KANSAS

State of Kansas) SS This is to certify that this plat has been filed for record in the office of the Register of Deeds, this 14th day of August, 1995, at 2:30 o'clock P.M. and is duly recorded.



Pat Kettler Register of Deeds
Pat Kettler
Ed Resz Deputy
Ed Resz

20.00