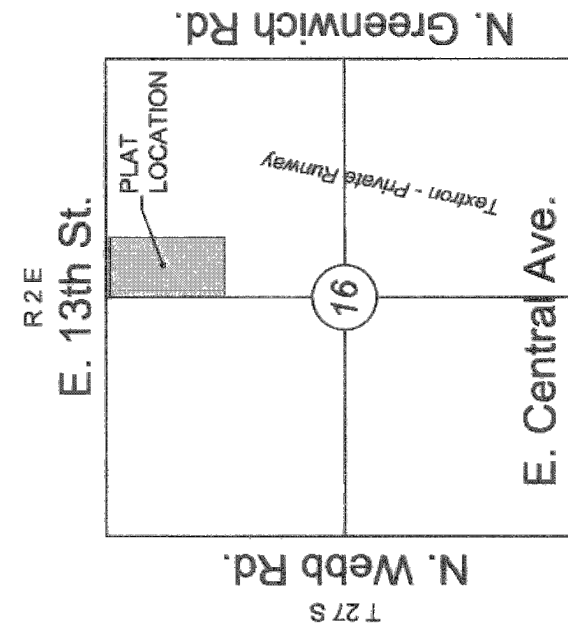


FINAL PLAT VERANDA SECOND ADDITION AN ADDITION TO WICHITA, SEDGWICK COUNTY, KANSAS

a replat of Veranda Addition, an addition to Wichita, Sedgwick County, Kansas



VICINITY MAP

NW cor., NE 1/4, Sec. 16, T27S, R2E, 6th P.M. Fnd. 3/4" Rebar w/ yellow id cap

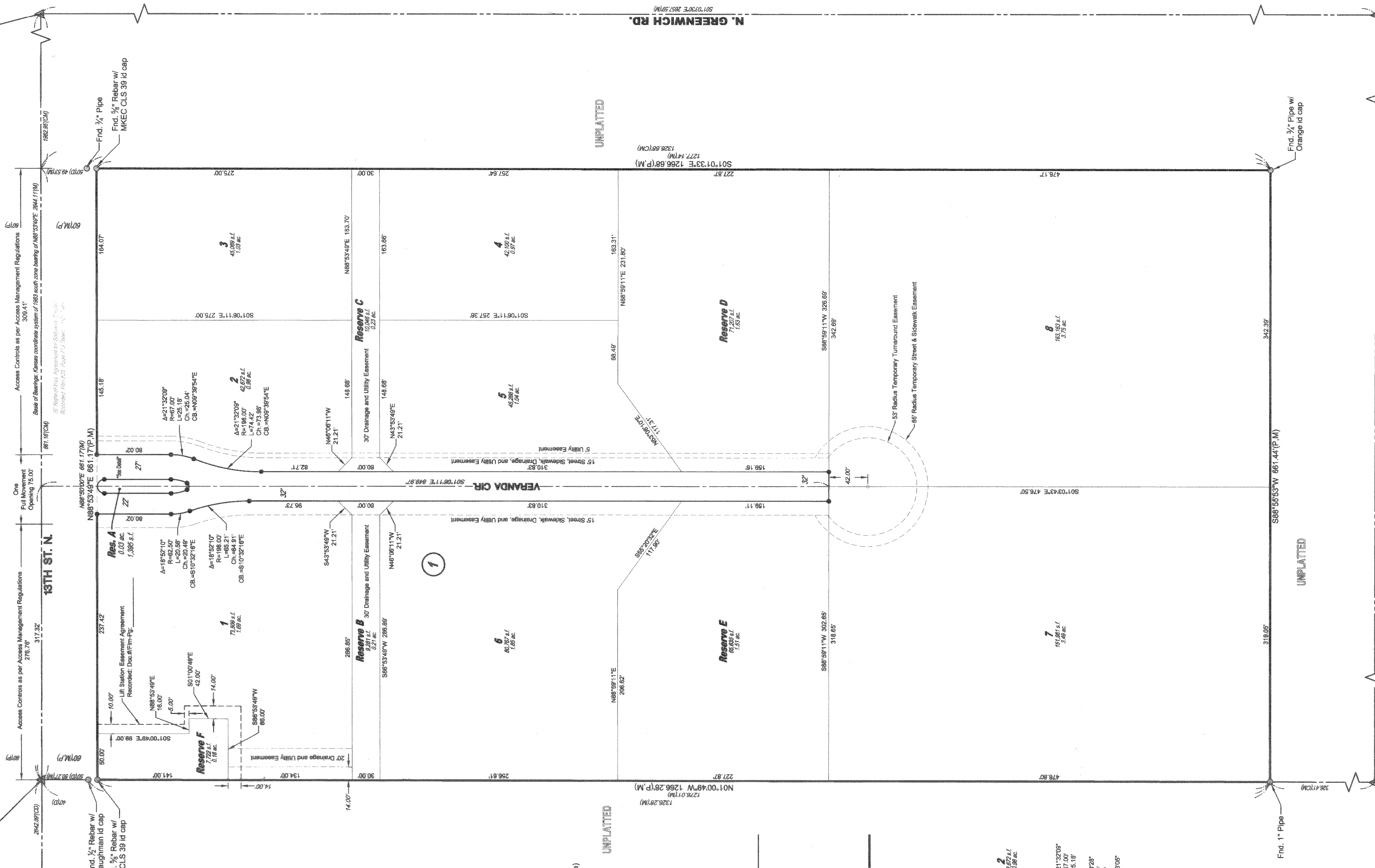
NW cor., NW 1/4, Sec. 16, T27S, R2E, 6th P.M.

Waterfront 8th Addition

Veranda St.

Greenwich Office Park

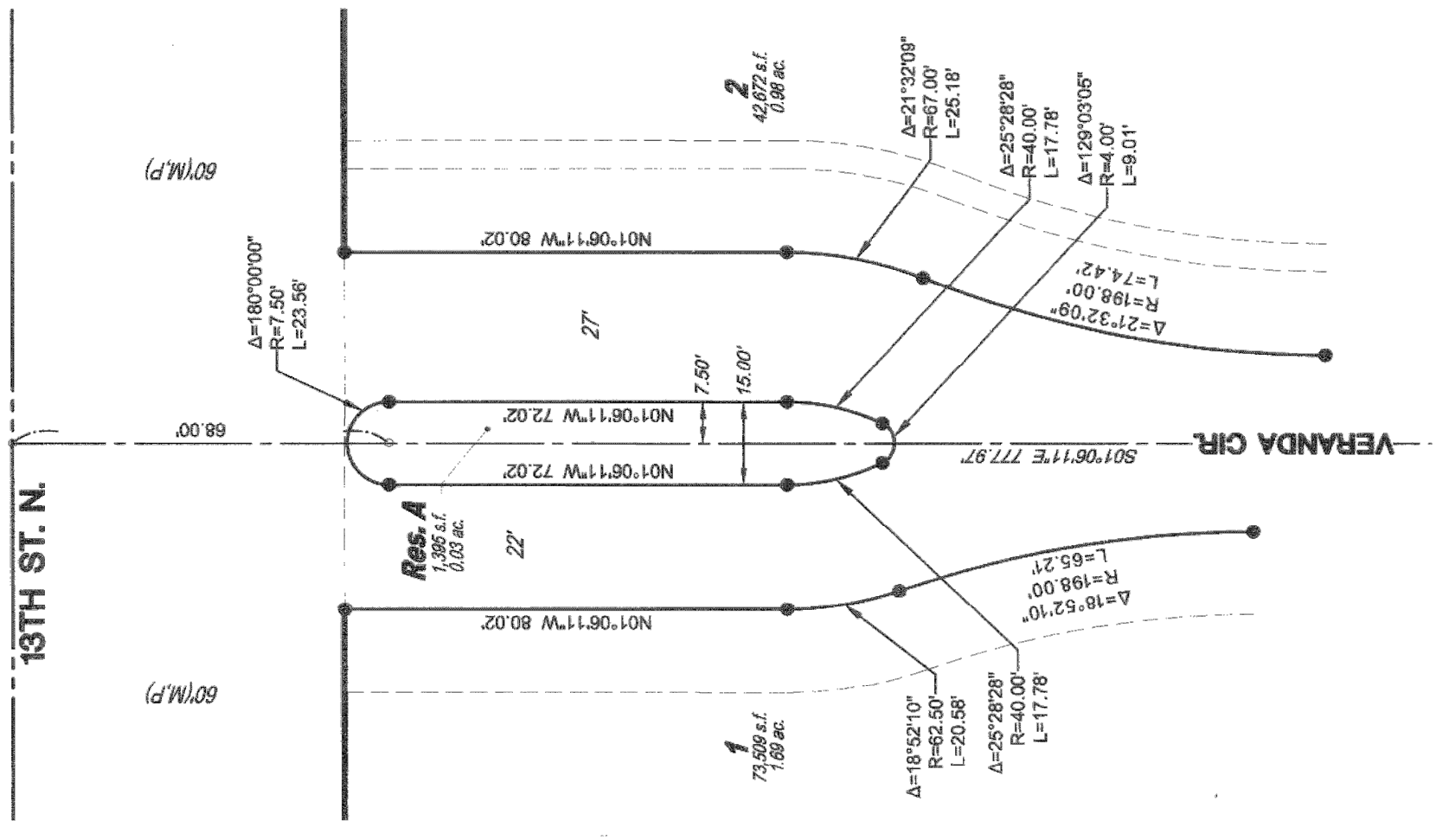
NE cor., NE 1/4, Sec. 16, T27S, R2E, 6th P.M. Fnd. 3/4" Rebar w/ yellow id cap



Basis of Bearings: Kansas coordinate system of 1983 south zone bearing of N88°53'49"E on the north line of the Northeast Quarter, Section 16, Township 27 South, Range 2 East of the 6th Principal Meridian. This plat is surveyed and platted on NAD83 using Kansas state plane south zone coordinates, modified to the surface, having a combined adjustment scale factor of 1.000120014

LEGEND

- Date of Survey: September 18, 2017
- Section Corner Monument Found
- Found monument (see annotation for type)
- Set 3/4" rebar w/ MKEC CLS 39 id. cap (or see annotation for type)
- Measured (M)
- Described (D)
- Platted (P)
- Calculated from Measurement (CM)
- Complete Access Control C.A.C.
- Lot
- Block

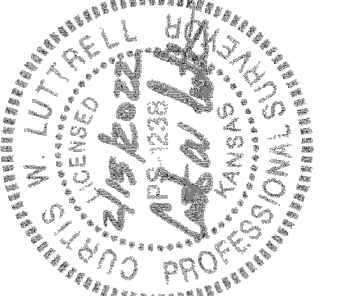


RESERVE A DETAIL

1" = 30'

MINIMUM PAD ELEVATIONS LOWEST OPENINGS		
LOTS / Padstone	BLOCK ELEVATION	PAVING
4 - B	1	1387.1

BENCHMARK
 Chiseled square on top of curb at north end of island in N. Veranda St.
 460' north of centerline of 13th St. N.
 ELEV = 1387.03 NAVD 88



Center Sec. 16, T27S, R2E, 6th P.M. Fnd. Stone w/ "X" cut

SE cor., NE 1/4, Sec. 16, T27S, R2E, 6th P.M. Fnd. 3/4" Pipe in Thimble

Fnd. 3/4" Pipe w/ Orange id cap

Fnd. 1" Pipe

Fnd. 1" Pipe

