

J:\PROJECTS\2021\12\10\10674_COW RIVERSIDE WATER MAIN REPLACEMENT\DWG\WTRPH2\1674-05-3004-PH2.DWG
 PLOTTED: Tuesday, August 16, 2022 @ 11:21AM



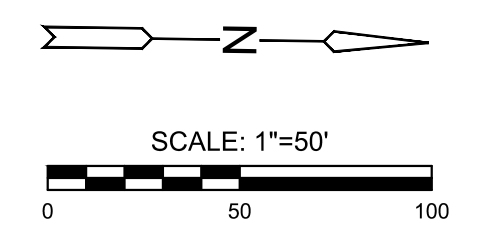
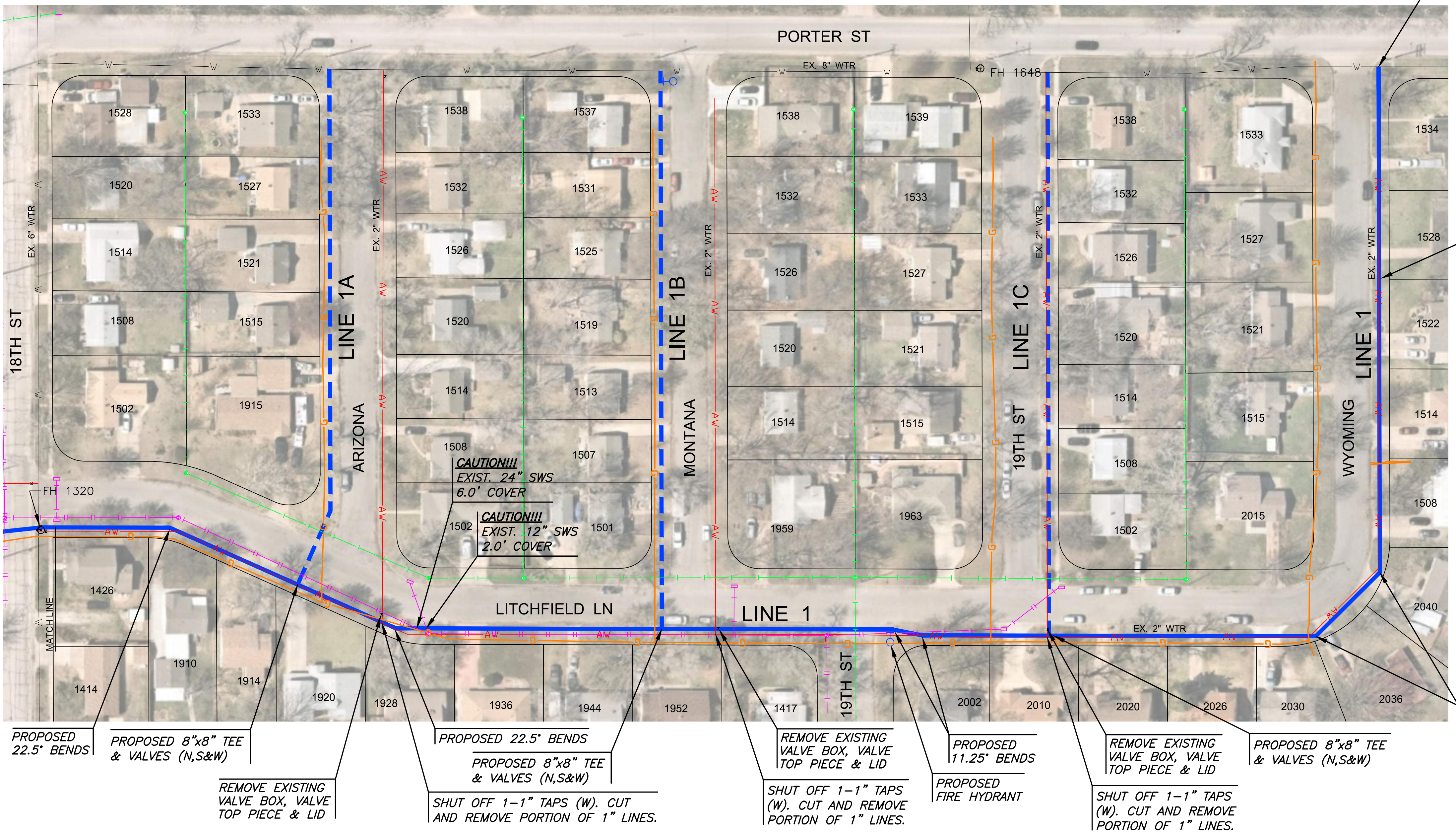
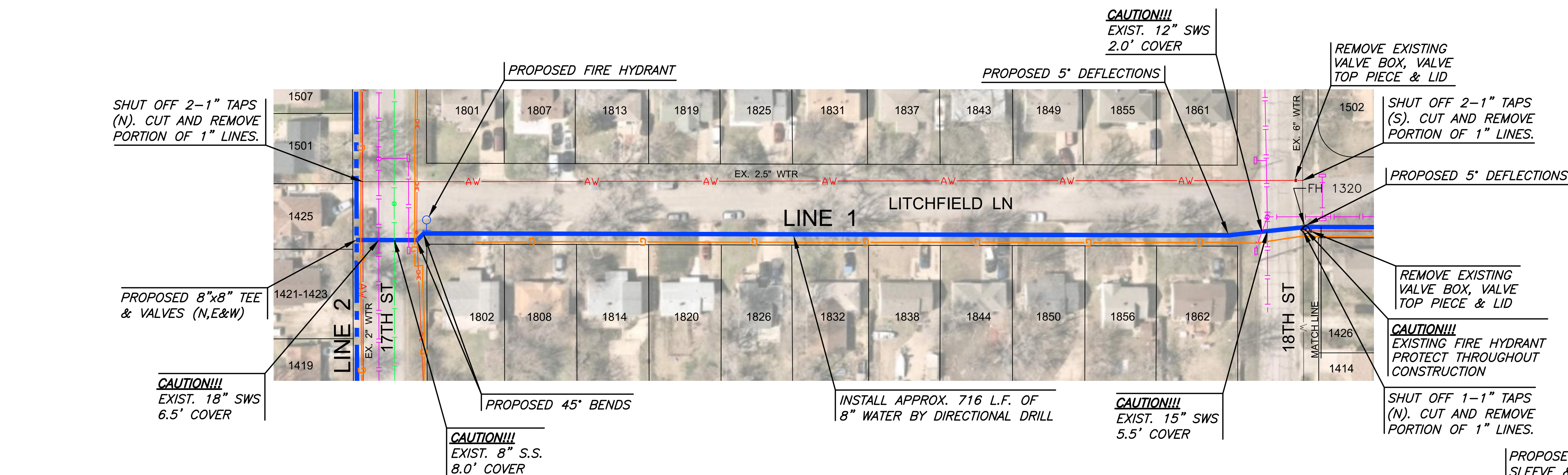
RIVERSIDE WATER MAIN REPLACEMENT PHASE 2



©2022
 MKEC Engineering
 All Rights Reserved
 www.mkec.com
 These drawings and their contents, including, but not limited to, all concepts, designs, & ideas are the exclusive property of MKEC Engineering (MKEC), and may not be used or reproduced in any way without the express consent of MKEC.

LINE 1	
PROJECT NO.	448-2021-017906
DATE	AUG 2022
SCALE	1" = 50'
DESIGNED	DFL
DRAWN	JWC
CHECKED	KDA
ISSUED FOR APPROVAL	08/16/22
NO.	REVISION
SHEET NO.	
10 OF 30	

CONTRACTOR TO ENSURE 2' OF VERTICAL SEPARATION AT ALL SANITARY SEWER CROSSINGS. IF 2" SEPARATION IS NOT OBTAINABLE OR WATER IS BELOW SANITARY SEWER THEN SANITARY SEWER SHALL BE ENCASED.



LEGEND

- G — EXISTING GAS
- OHE — EXISTING OVERHEAD ELECTRIC
- UGE — EXISTING UNDERGROUND ELECTRIC
- — EXISTING SANITARY
- — EXISTING STORM DRAIN PIPE
- FOC — EXISTING FIBER OPTIC
- X — EXISTING FENCE
- W — EXISTING WATER
- AW — EXISTING WATER (TO BE ABANDONED)
- — PROPOSED WATER
- - - — PROPOSED WATER (SEE SHEET 11)
- - - — PROPOSED WATER (SEE SHEET 12)

DESIGN-BUILD PLANS AND ANTICIPATED ALIGNMENTS ARE ISSUED FOR BIDDING PER THE CITY OF WICHITA'S APPROVAL