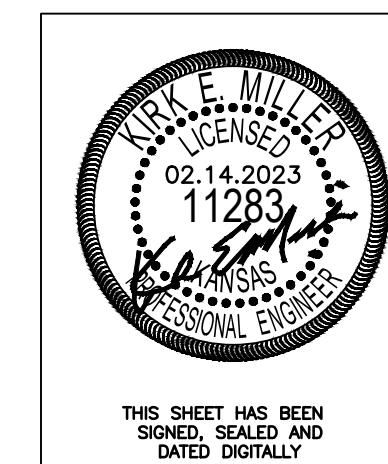


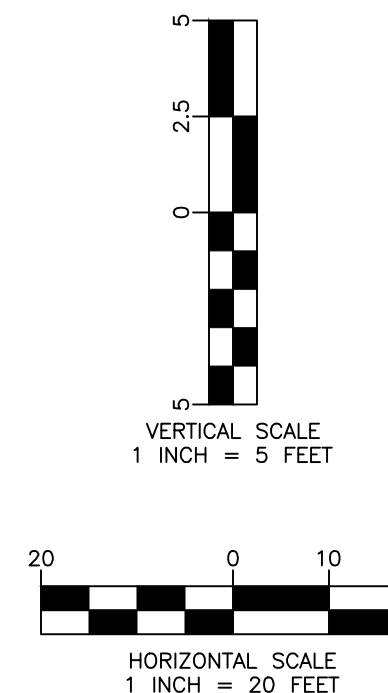
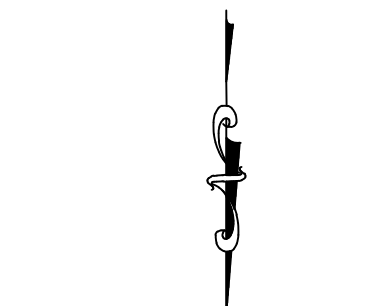
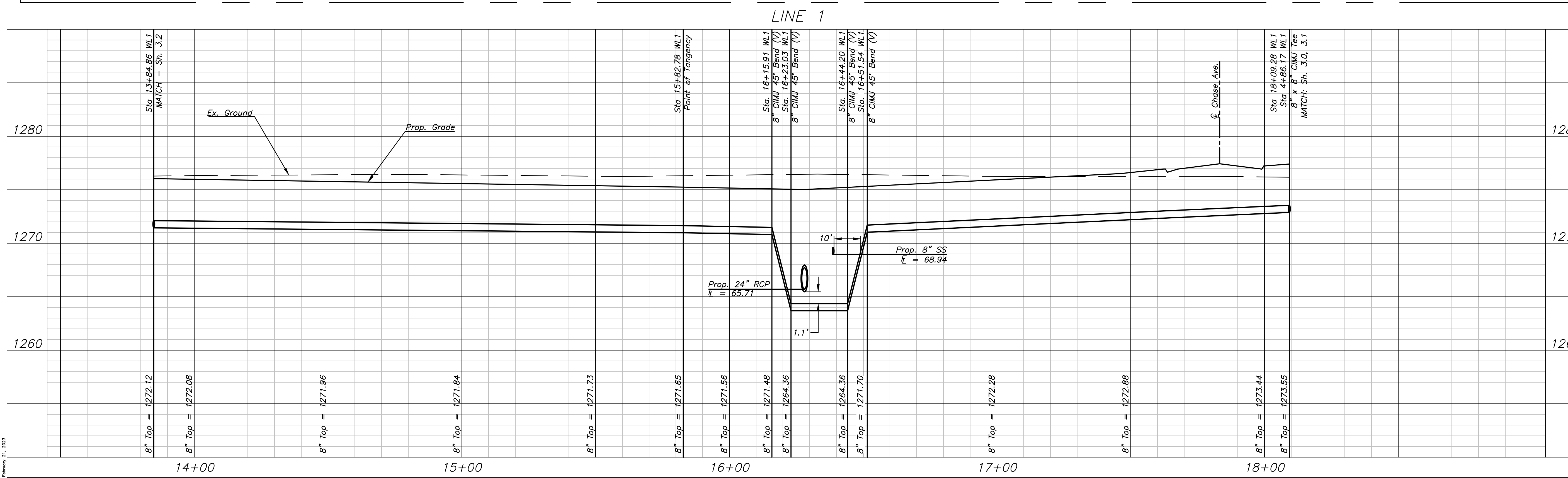
CURVE DATA TABLE
 CURVE DATA BASED ON CENTERLINE OF WL RADIUS
 $\Delta=90^{\circ}00'00''$ $T=126.00'$ $L=197.92'$ $R=126.00'$ $E=52.19'$

STATION	ARC LENGTH	CH LENGTH (8' OS RT.)	DEFLECTION ANGLE	TOTAL DEFLECTION
13+84.86 PC				
14+00.00	15.14'	16.10'	3'26'33"	3'26'33"
14+25.00	25.00'	26.59'	05'41'04"	09'07'37"
14+50.00	25.00'	26.59'	05'41'04"	14'48'41"
14+75.00	25.00'	26.59'	05'41'04"	20'29'45"
15+00.00	25.00'	26.59'	05'41'04"	26'10'49"
15+25.00	25.00'	26.59'	05'41'04"	31'51'53"
15+50.00	25.00'	26.59'	05'41'04"	37'32'57"
15+75.00	25.00'	26.59'	05'41'04"	43'14'04"
15+82.78 PT	7.78'	8.27'	01'46'08"	45'00'00"

DEFLECTION PER FOOT = 13.64187551 MINUTES



THIS SHEET HAS BEEN SIGNED, SEALED AND DATED DIGITALLY



Fox Run 2nd Addition
 WL1 Plan & Profile
 Wichita, Kansas

KEMILLER ENGINEERING
 117 E. Lewis, Wichita, KS 67202 (316)264-0242

KEM PROJ. 21036	DATE 02.2023	SHEET 3.3
DESIGN KEM	DRAWN ZJS	

February 21, 2023