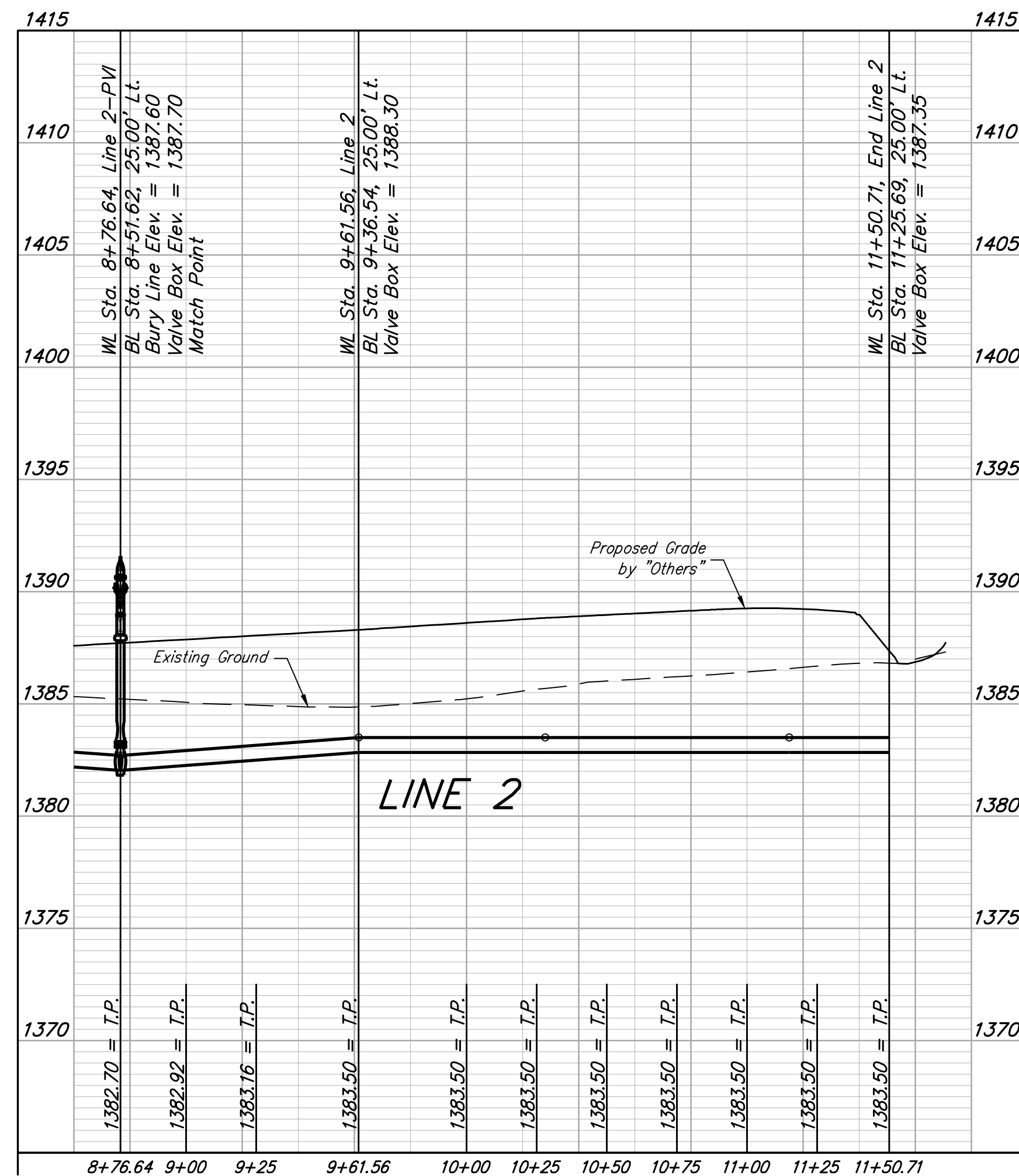
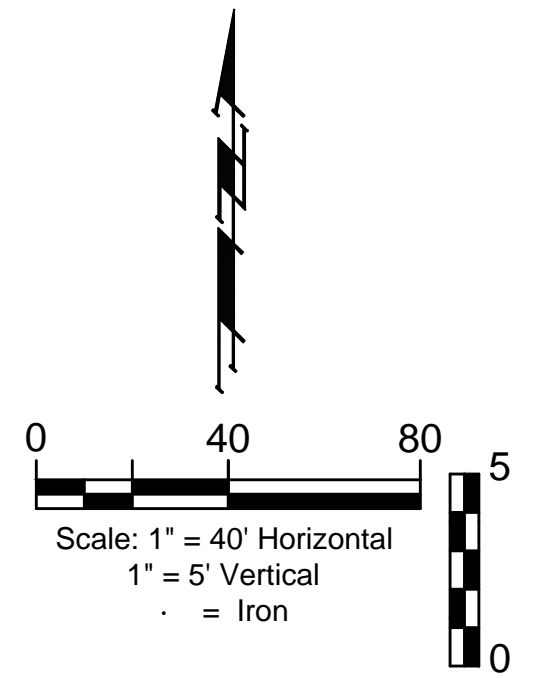
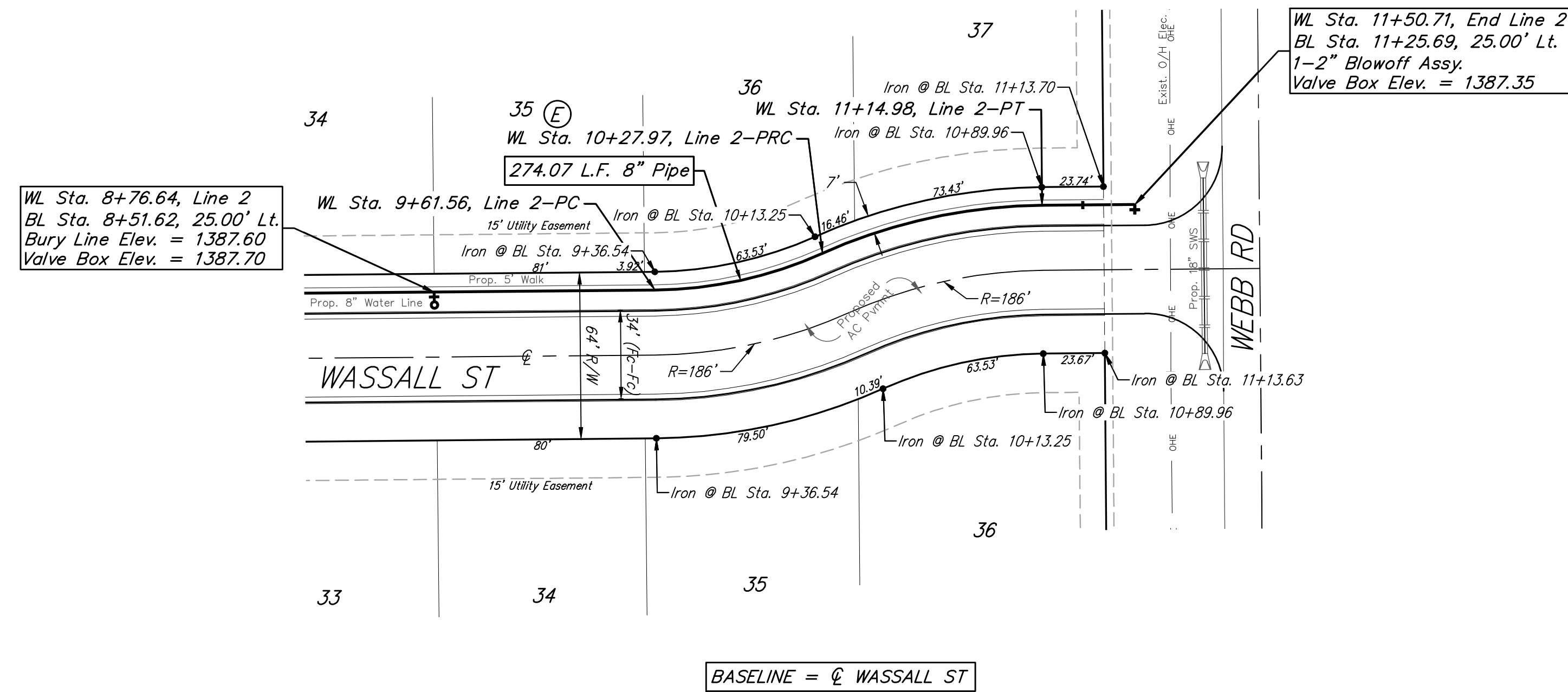


BENCHMARKS:
 BM-1#
 SQUARE CUT ON TOP OF CURB 119.3'± N.
 & 6.4'± W. OF SE. COR. LOT 7, BLOCK 2,
 TURTLE RUN 3RD ADDITION.
 ELEV. = 1390.32 NAVD88

BM-2#
 SQUARE CUT ON TOP OF CURB 118.4'± N.
 OF SE. COR. LOT 6, BLOCK 2, TURTLE
 RUN 2ND ADDITION.
 ELEV. = 1391.04 NAVD88

TOWNE PARC 10TH ADDITION



Pipe layout is shown to be circular for radii over 125'. Contractor to use short pipe lengths, high deflection couplers, and manufacturer recommended pipe deflection to meet planned alignment.

BRENT WOOLEN
 LICENSED PROFESSIONAL ENGINEER
 8470
 06/12/2023
 KANSAS

BAUGHMAN COMPANY
 315 Ellis St.
 Wichita, KS 67211
 316-262-7271
 BaughmanCo.com

TOWNE PARC 10TH ADDITION

LINE 2

WATER DISTRIBUTION SYSTEM

PROJECT NUMBER:
 448-2023-005530

DESIGN: NBW DRAWN: JLD

DATE: June 12, 2023

SHEET 06 OF 19

File: E:\Projects\Towne Parc 10th Addition_22-01-P743\Engineering\PHASE 1\WTR_22-11-E354\WTR.dwg