

LATERAL 33, MAIN 1, WESTLINK SEWER
EVERGREEN PLACE ADDITION
PROJECT NUMBER 468-83804
OCA NUMBER 744061
 WICHITA, KANSAS
 JIM ARMOUR, P.E., ACTING CITY ENGINEER

GENERAL NOTES

1. Contractor will be required to provide notice to utility companies a minimum of twenty-four (24) hours prior to any excavation, as follows:

The Contractor must notify the following in case of an emergency:

Southwestern Bell Telephone Co. 154 N. Broadway Wichita, Kansas 67202 Jim Toben 316-268-2245	Wichita Water & Sewer Dept. 8th Floor, City Hall 455 N. Main St. Wichita, Kansas 67202 Bill Perkins/Paul Bryant 316-268-4555
Westar Energy P.O. Box 208 Wichita, Kansas 67201 Jimmy Washington 316-261-6315	Cox Communications 701 E. Douglas Wichita, Kansas 67202 Brian Ring 316-262-4270 Ext.169
Wichita Water & Sewer Dept. 8th Floor, City Hall 455 N. Main St. Wichita, Kansas 67202 Bill Perkins 316-268-4555	Kansas One Call 800-344-7233 Emergency 911
Aquila Network 1611 S. Hoover Wichita, Kansas 67209 Calvin Briggs 316-941-7233	

2. Contractor shall not start work on the project until the project inspector is assigned to the project and is present on the site. Any work done without inspection will be required to be uncovered for inspection.

3. Underground utility service lines and overhead utility pole lines are to be adjusted as necessary by others prior to construction, unless the plans specifically call for their locations, as shown on the plans, represent the best information obtainable for design. Location information has been obtained from the various utility companies and is either from company record drawings or company-provided field locations. The Contractor will be required to work around existing utilities within the right-of-way which do not conflict with proposed construction.

4. The contractor shall be responsible for preserving property irons. The Contractor will be required to reestablish any property irons which are damaged or destroyed by his construction operations. Such irons shall be reestablished by a licensed land surveyor in accordance with state law.

5. All areas disturbed by construction operations shall be seeded with rye grass at a rate of 300 lbs/acre immediately following construction in that area. Ground shall be prepared per City of Wichita specifications prior to seeding.

6. Contractor shall verify the location of all utilities prior to beginning construction.

7. Contractor shall implement Best Management Practices in accordance with city regulations.

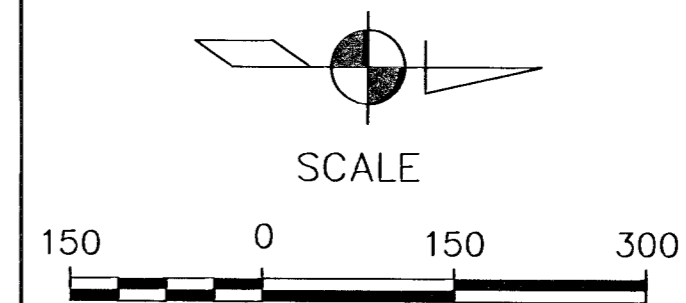
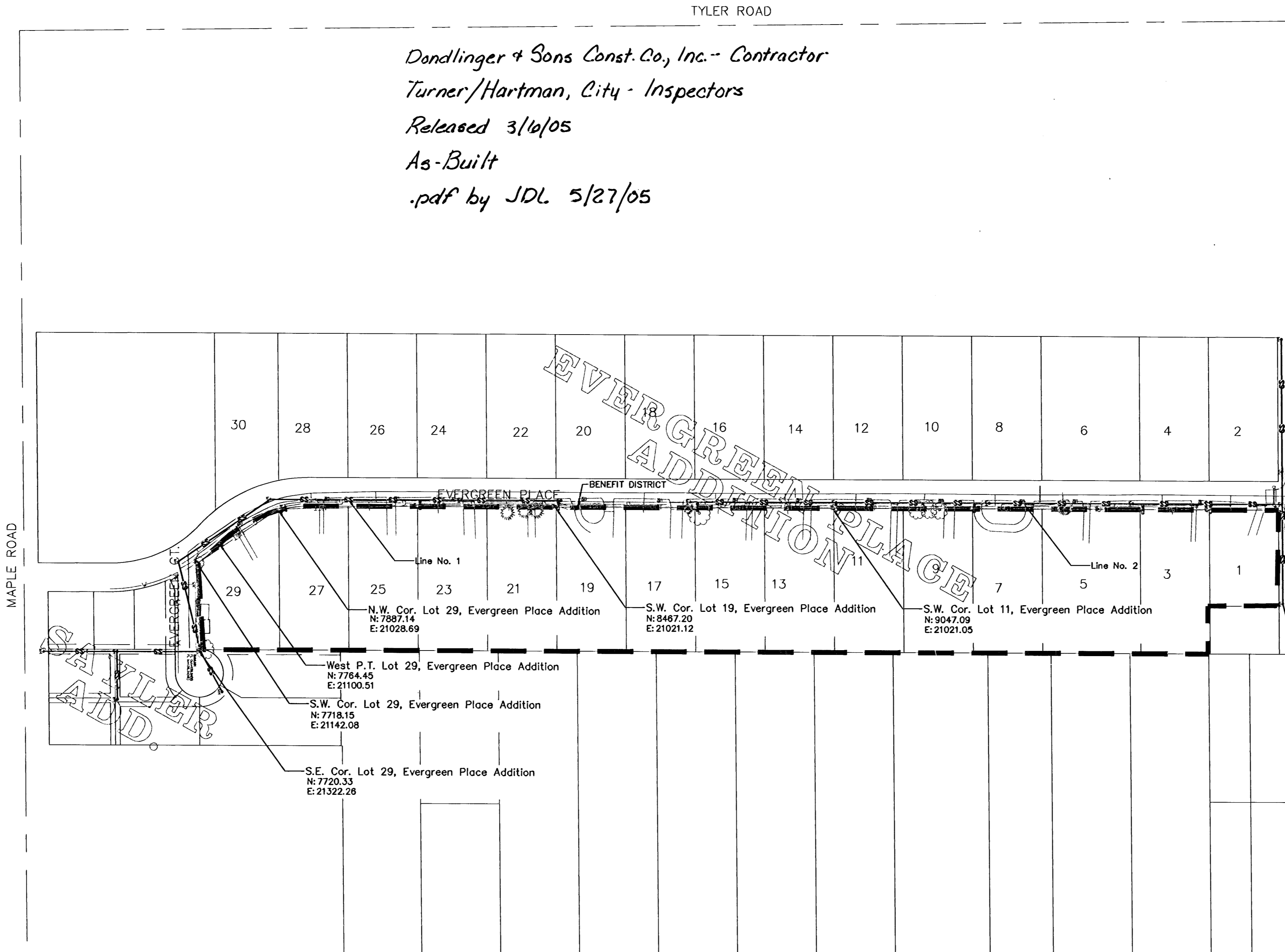
8. Remove trees only as necessary for sanitary sewer construction.

9. Restore ditch flowline grades prior to project completion.

10. Replace culvert pipes with existing pipe to previous flowline elevations.

11. Replace mailboxes with existing mailboxes.

Dondlinger & Sons Const. Co., Inc. - Contractor
Turner/Hartman, City - Inspectors
 Released 3/16/05
 As-Built
 .pdf by JDL 5/27/05

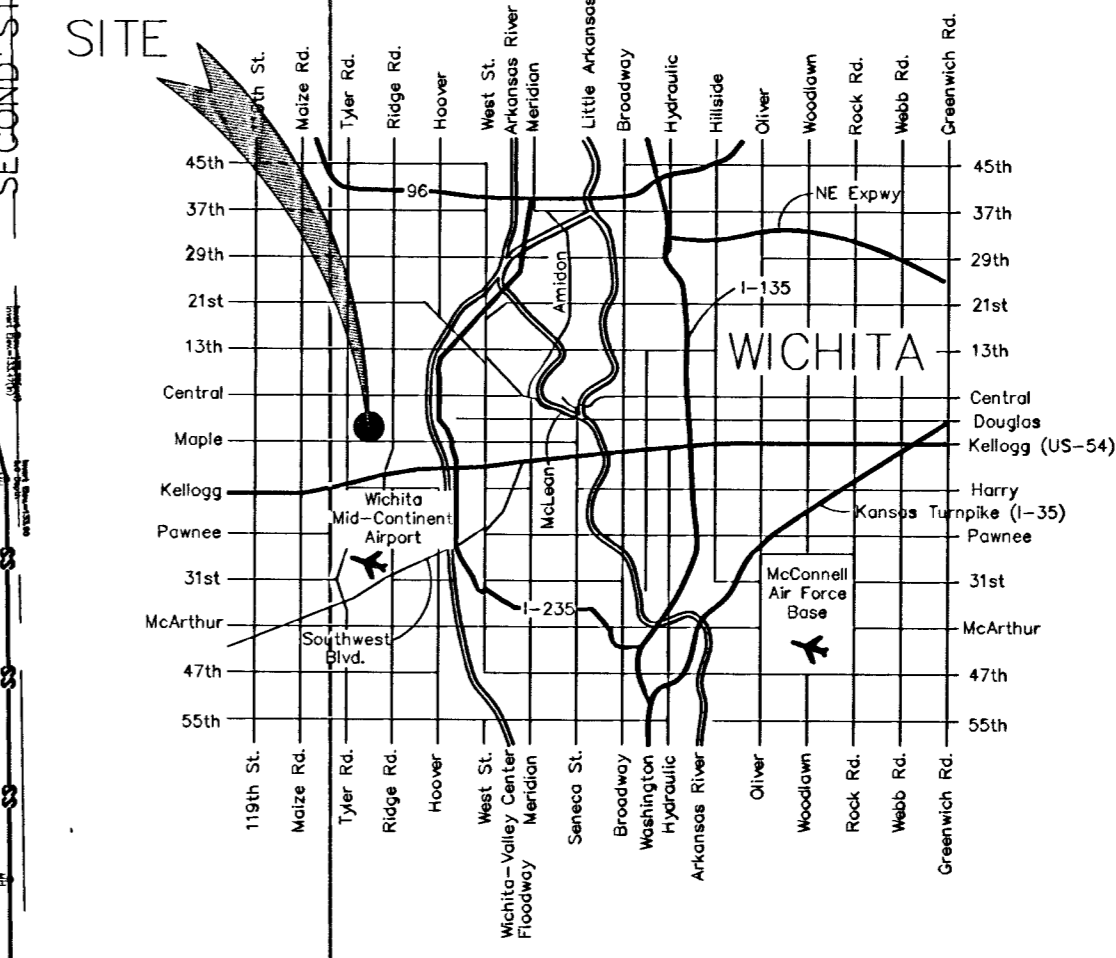


SHEET INDEX

- 1 Cover Sheet
- 2 Standard Type "P" Manhole
- 3-5 Plan & Profile
- 6-10 BMP'S

BENCHMARK

- 1. City of Wichita disc in turn island 50.7' N. & 39.3' E of intersection of Tyler & Maple.
Elev. 144.12 City Datum
- 2. "I" cut in the center of the concrete headwall of RCP Approx. 200' N. of 2nd Street & Approx. 990' W. of Evergreen.
Elev. 137.25 City Datum



FILENAME: 04025ss110



© AM Consulting, Inc.



AM CONSULTING Inc.
ENGINEERING SERVICES
 142 N. Emporia
 Wichita, KS 67202
 316/265-2870 fax 316/265-2839