

**BENCHMARK:**  
 City of Wichita benchmark at the SE corner of Fire Hydrant at E. End of E. Curb Return of Ponderosa & Ponderosa Ct.  
 Elev. = 167.83 (City Datum)

Brass Benchmark Disc  
 Adjacent to Fire Hydrant at E. End of E. Curb Return of Ponderosa & Ponderosa Ct.  
 Elev. = 170.96 (City Datum)

Remove existing end of road Markers and Relocate to Sta. 0+08.00, Sheet 9. Cost to be Included in "Site Clearing and Restoration."

Saw Cut, Remove & Replace Existing Surface Course and Remove Existing Asphalt Flumes as Indicated. Cost Shall be Included in "Site Clearing and Restoration"

Sta. 0+52.27, Begin construction of 5" A.C. Pmnt. w/5" Reinf. Rock Base and 4" Wide Concrete Sidewalk (4")

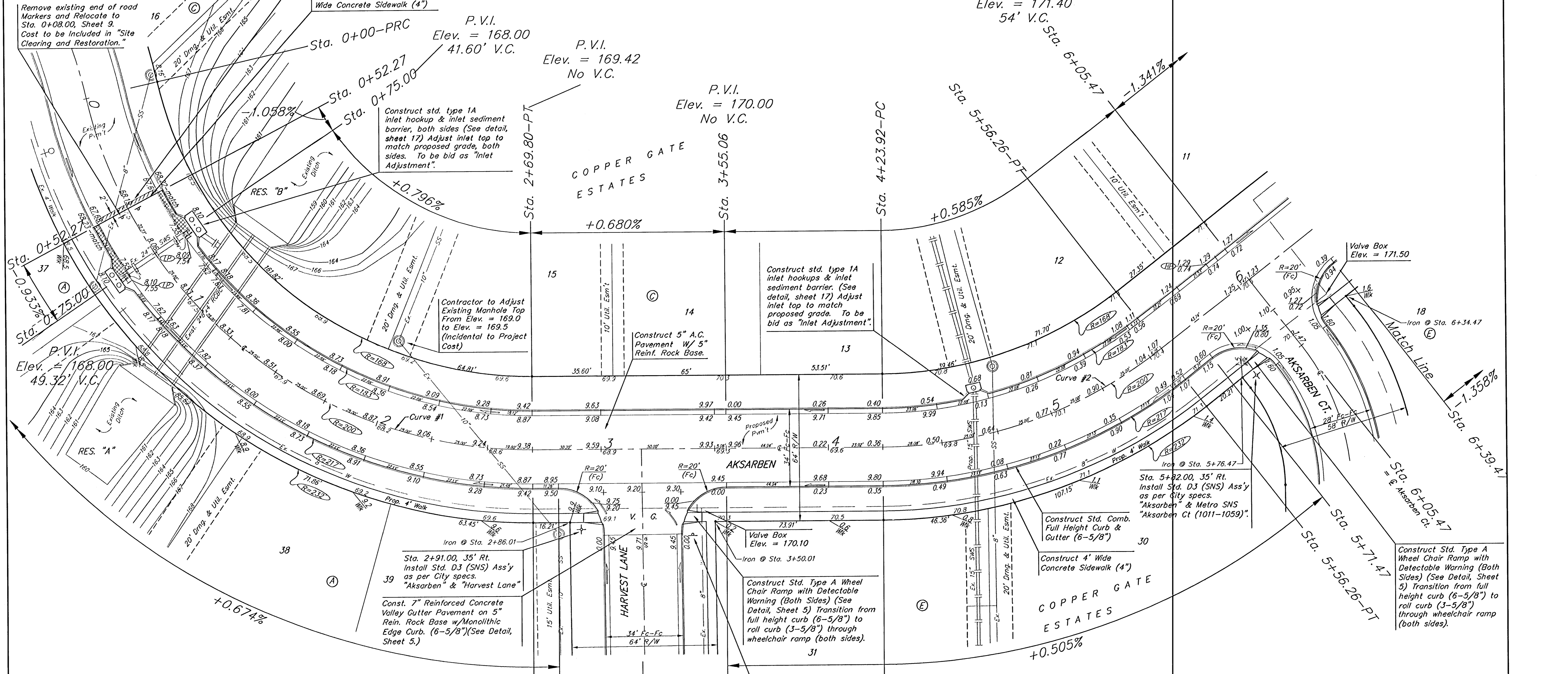
Sta. 0+00-PRC P.V.I. Elev. = 168.00 41.60' V.C.

Sta. 0+52.27 P.V.I. Elev. = 169.42 No V.C.

Sta. 3+55.06 P.V.I. Elev. = 170.00 No V.C.

Sta. 6+05.47 P.V.I. Elev. = 171.40 54' V.C.

Scale: 1" = 20'  
 • = Iron



Curve #1  
 Curve Data Based on Centerline  
 Rad. = 200' Delta = 77° 17' 27" Tangent = 159.92'  
 Arc = 269.80' L.C. = 249.80' Del/ft. = 8.59424 Min.

Station	Arc	FACE CHORD LENGTHS		Defl.	T. Defl.
		8' Lt.	8' Rt.		
0+00.00	-	0'00"00"	0'00"00"	0'00"00"	0'00"00"
0+52.27	52.27'	45.61'	58.64'	7'29"13"	7'29"13"
0+75.00	22.73'	19.88'	25.56'	3'15"21"	10'44"34"
1+00.00	25.00'	21.86'	28.11'	3'34"51"	14'19"25"
1+25.00	25.00'	21.86'	28.11'	3'34"52"	17'54"17"
1+50.00	25.00'	21.86'	28.11'	3'34"51"	21'29"08"
1+75.00	25.00'	21.86'	28.11'	3'34"51"	25'03'59"
2+00.00	25.00'	21.86'	28.11'	3'34"52"	28'38'51"
2+25.00	25.00'	21.86'	28.11'	3'34"51"	32'13'42"
2+50.00	25.00'	21.86'	28.11'	3'34"52"	35'48'34"
2+69.80	19.80'	17.32'	22.27'	2'50"10"	38'38'44"

Curve #2  
 Curve Data Based on Centerline  
 Rad. = 200' Delta = 37° 54' 47" Tangent = 68.70'  
 Arc = 132.34' L.C. = 129.94' Del/ft. = 8.59441 Min.

Station	Arc	FACE CHORD LENGTHS		Defl.	T. Defl.
		8' Lt.	8' Rt.		
4+23.92	-	0'00"00"	0'00"00"	0'00"00"	0'00"00"
4+25.00	1.08'	0.94'	1.21'	0'09"17"	0'09"17"
4+50.00	25.00'	21.86'	28.11'	3'34"52"	3'44"09"
4+75.00	25.00'	21.86'	28.11'	3'34"51"	7'19"00"
5+00.00	25.00'	21.86'	28.11'	3'34"52"	10'53'52"
5+25.00	25.00'	21.86'	28.11'	3'34"51"	14'28'44"
5+50.00	25.00'	21.86'	28.11'	3'34"51"	18'03'35"
5+56.26	6.26'	5.48'	7.04'	0'53'49"	18'57'24"

**Baughman** Engineering | Surveying | Planning | Landscape Architecture

**Copper Gate Estates - Phase III**  
**AKSARBEN**  
 STA. 0+52.27 TO STA. 6+39.47

PROJECT NUMBER 47283671	DESIGN NBW	DRAWN TMS
REVISIONS	APPROVED	DATE 4/06/05
SCALES Noted		SHEET <b>6 OF 30</b>

CopperGate/Phase 3/Str.L.dwg 04-06-E956