

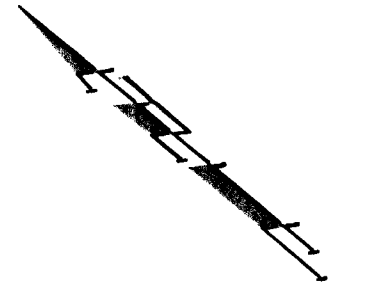
BENCHMARK:
City of Wichita benchmark at
the SE corner of intersection
of 135th Street West and 13th
Street North.
Elev. = 167.83 (City Datum)

Brass Benchmark Disc
Adjacent to Fire Hydrant at E.
End of E. Curb Return of
Ponderosa & Ponderosa Ct.
Elev. = 170.96 (City Datum)

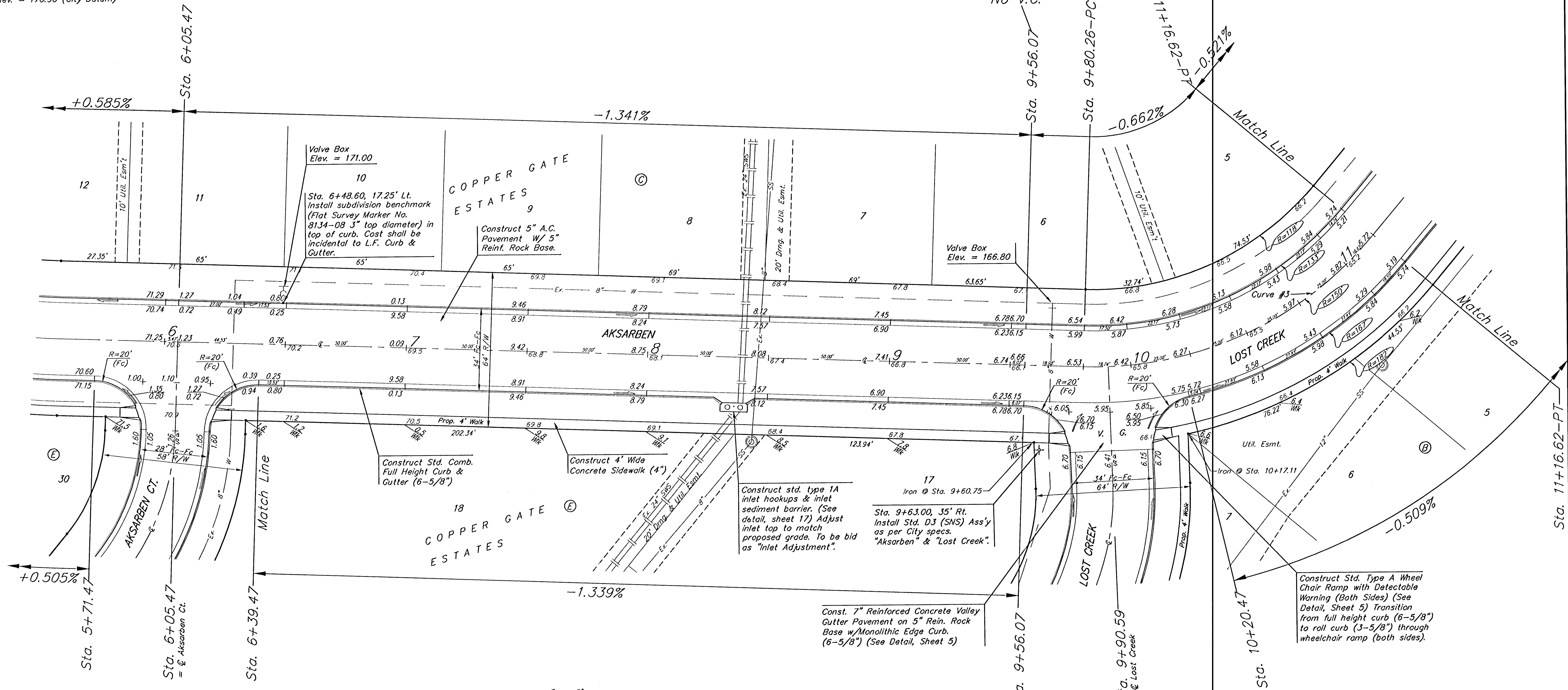
P.V.I.
Elev. = 171.40
54' V.C.

P.V.I.
Elev. = 165.74
No V.C.

P.V.I.
Elev. = 166.70
No V.C.



Scale: 1" = 20'
• = Iron



Curve #3
Curve Data Based on Centerline
Rad. = 150' Delta = 52.05' 13" Tangent = 73.30'
Arc = 136.36' L.C. = 131.72' Def/El. = 11.45943 Min.

Station	Arc	FACE CHORD LENGTHS		Defl.	T. Defl.
		B' Lt.	B' Rt.		
9+80.26	-	-	-	0'00"00"	0'00"00"
10+00.00	19.74'	16.44'	23.01'	3'46"13"	3'46"13"
10+20.47	20.47'	17.05'	23.86'	3'54"34"	7'40"47"
10+25.00	4.53'	3.77'	5.28'	0'51"55"	8'32"42"
10+50.00	25.00'	20.81'	29.13'	4'46"29"	13'19"11"
10+75.00	25.00'	20.81'	29.13'	4'46"29"	18'05"40"
11+00.00	25.00'	20.81'	29.13'	4'46"29"	22'52"09"
11+16.62	16.62'	13.84'	19.58'	3'70"28"	26'02"37"

Baughman Engineering, P.A. 313 Ella St. Wichita, KS 67211 P 316.263.7211 F 316.263.6149
ENGINEERING | SURVEYING | PLANNING | LANDSCAPE ARCHITECTURE

Copper Gate Estates - Phase III
AKSARBEN
STA. 6+39.47 TO STA. 11+16.62

PROJECT NUMBER 472-83671	DESIGN TMS
REVISIONS	APPROVED DATE 4/13/05
	SCALE Noted
	SHEET 7 OF 30

CopperGate\Phase 3\Sr2.dwg 0406E956