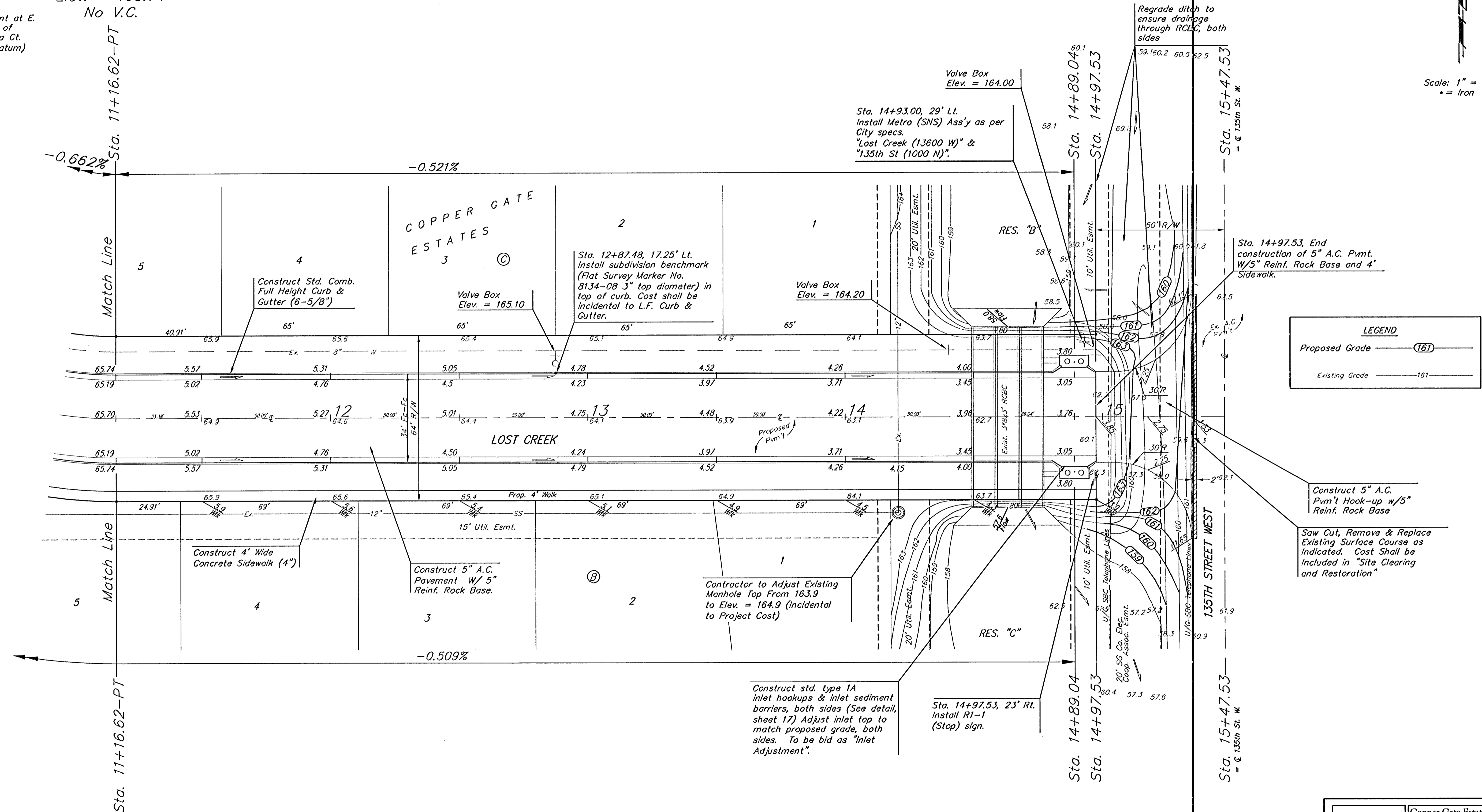
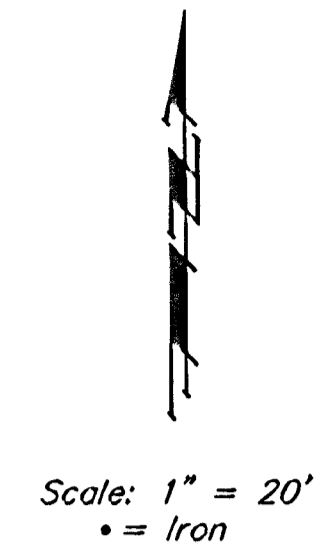


BENCHMARK:
 City of Wichita benchmark at
 the SE corner of intersection
 of 135th Street West and 13th
 Street North.
 Elev. = 167.83 (City Datum)

Brass Benchmark Disc
 Adjacent to Fire Hydrant at E.
 End of E. Curb Return of
 Ponderosa & Ponderosa Ct.
 Elev. = 170.96 (City Datum)

P. V.I.
 Elev. = 165.74
 No V.C.



LEGEND	
Proposed Grade	---(161)---
Existing Grade	-----161-----

Construct 5" A.C. Pav't Hook-up w/5" Reinf. Rock Base

Saw Cut, Remove & Replace Existing Surface Course as Indicated. Cost Shall be Included in "Site Clearing and Restoration"

	Copper Gate Estates - Phase III	
	LOST CREEK	
STA. 11+16.62 TO STA. 15+47.53		
<small>Baughman Company, P.A. 315 1/2 St. W. Wichita, KS 67211 P 316-262-7211 F 316-262-5149 ENGINEERING SURVEYING PLANNING LANDSCAPE ARCHITECTURE</small>		
PROJECT NUMBER 472-83671	DESIGN TMS	DRAWN TMS
REVISIONS	APPROVED	DATE 4/13/05
	SCALE Noted	SHEET
	8 OF 30	
CopperGate/Phase III/Str3.dwg		0406E936