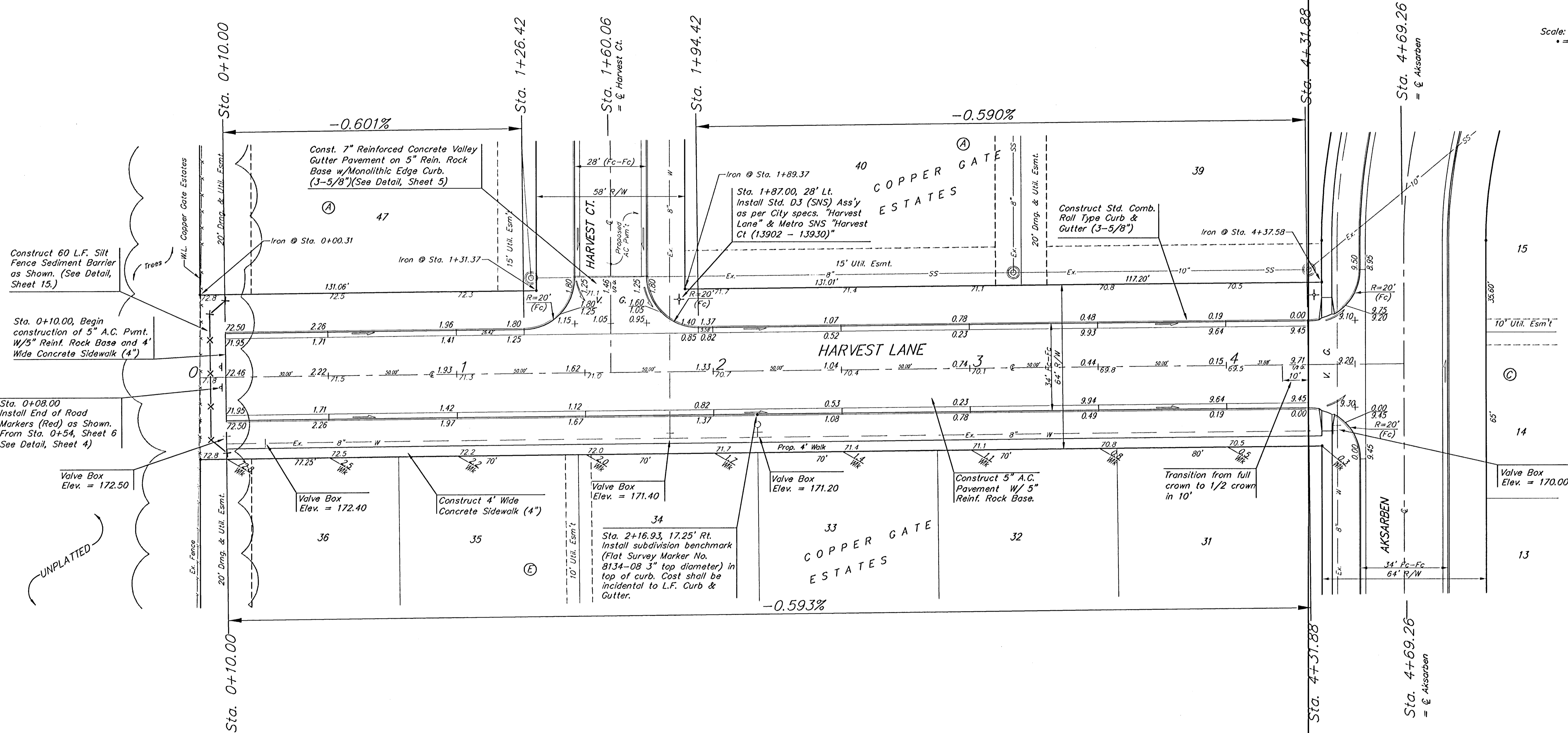
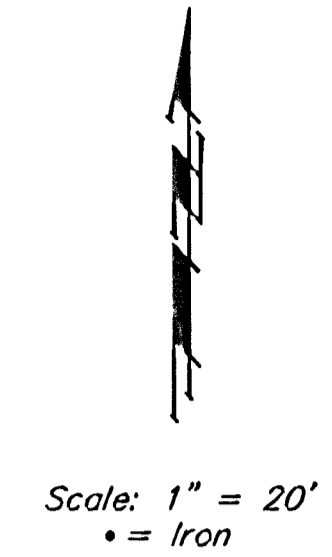


BENCHMARK:
City of Wichita benchmark at
the SE corner of intersection
of 135th Street West and 13th
Street North.
Elev. = 167.83 (City Datum)

Brass Benchmark Disc
Adjacent to Fire Hydrant at E.
End of E. Curb Return of
Ponderosa & Ponderosa Ct.
Elev. = 170.96 (City Datum)



Construct 60 L.F. Silt
Fence Sediment Barrier
as Shown. (See Detail,
Sheet 15.)

Sta. 0+10.00, Begin
construction of 5" A.C. Pmnt.
w/5" Reinf. Rock Base and 4"
Wide Concrete Sidewalk (4")

Sta. 0+08.00
Install End of Road
Markers (Red) as Shown.
From Sta. 0+54, Sheet 6
See Detail, Sheet 4)

UNPLATTED

Remove trees only as necessary
for street construction. Cost of
removal to be incidental to lump
sum bid item "Site Clearing &
Restoration".

NOTE: ROLL TYPE CURB & GUTTER TO
BE CONSTRUCTED ON THE
PAVEMENT SHOWN ON THIS SHEET.
TOP OF CURB ELEVATIONS ARE
GIVEN FOR FULL HEIGHT CURB.

		Copper Gate Estates - Phase III	
		HARVEST LANE	
Baughman Company, P.A., 315 Ellis St., Wichita, KS 67211 P 316-262-7111 F 316-262-0114 ENGINEERING SURVEYING PLANNING LANDSCAPE ARCHITECTURE		STA. 0+05.00 TO STA. 4+69.26	
PROJECT NUMBER 472-83671	DESIGN TMS	DRAWN TMS	DATE 4/13/05
REVISIONS:	APPROVED	SCALE Noted	SHEET
		9 OF 30	
CopperGate\Phase 3\Std.dwg		04-06-E956	