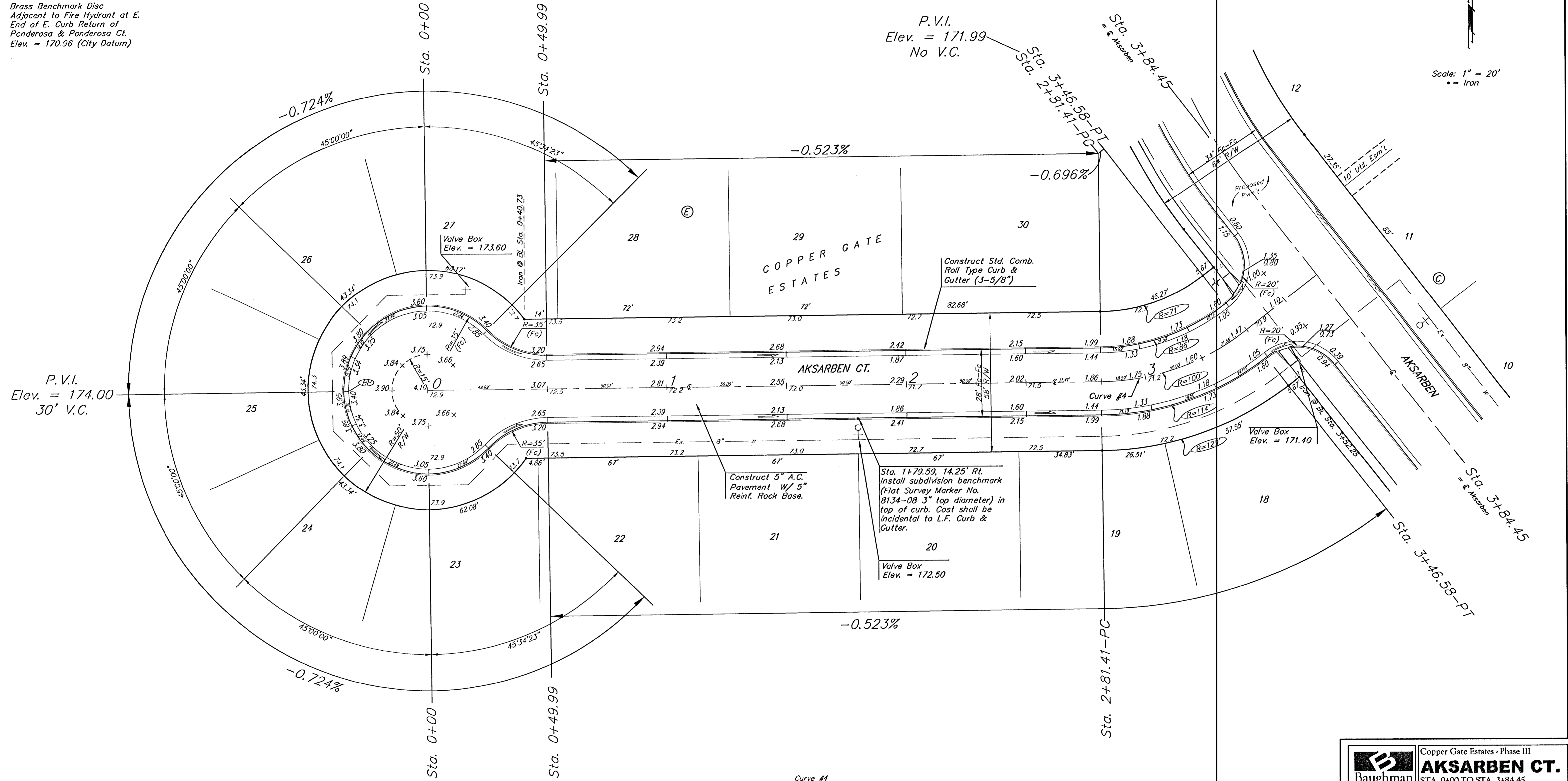
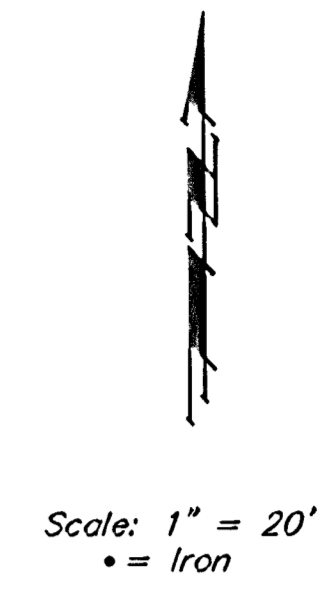


BENCHMARK:  
 City of Wichita benchmark at  
 the SE corner of intersection  
 of 135th Street West and 13th  
 Street North.  
 Elev. = 167.83 (City Datum)

Brass Benchmark Disc  
 Adjacent to Fire Hydrant at E.  
 End of E. Curb Return of  
 Ponderosa & Ponderosa Ct.  
 Elev. = 170.96 (City Datum)



P.V.I.  
 Elev. = 174.00  
 30' V.C.

Curve #4  
 Curve Data Based on Centerline  
 Rad. = 100' Delta = 37° 20' 13" Tangent = 33.79'  
 Arc = 65.17' L.C. = 64.02' Def/FT. = 17.18749 Min.

Station	Arc	FACE CHORD LENGTHS		Defl.	T. Defl.
		8' Lt.	8' Rt.		
2+81.41	-	-	-	0°00'00"	0°00'00"
3+00.00	18.59'	14.48'	22.65'	5°19'31"	5°19'31"
3+25.00	25.00'	19.45'	30.42'	7°09'41"	12°29'12"
3+46.58	21.58'	16.80'	26.27'	6°10'55"	18°40'07"

NOTE: ROLL TYPE CURB & GUTTER TO BE CONSTRUCTED ON THE PAVEMENT SHOWN ON THIS SHEET. TOP OF CURB ELEVATIONS ARE GIVEN FOR FULL HEIGHT CURB.

	Copper Gate Estates - Phase III	
	<b>AKSARBEN CT.</b> STA. 0+00 TO STA. 3+84.45	
Baughman Company, P.A. 315 Ellis St. Wichita, KS 67211 P 316-262-7271 F 316-262-0149 ENGINEERING   SURVEYING   PLANNING   LANDSCAPE ARCHITECTURE		
PROJECT NUMBER 472-83671	DESIGN NBW	DRAWN TMS
REVISIONS:	APPROVED	DATE 4/13/05
	SCALE	SHEET
	<b>11 OF 30</b>	
CopperGate\Phase 3\Std.dwg		0406E956