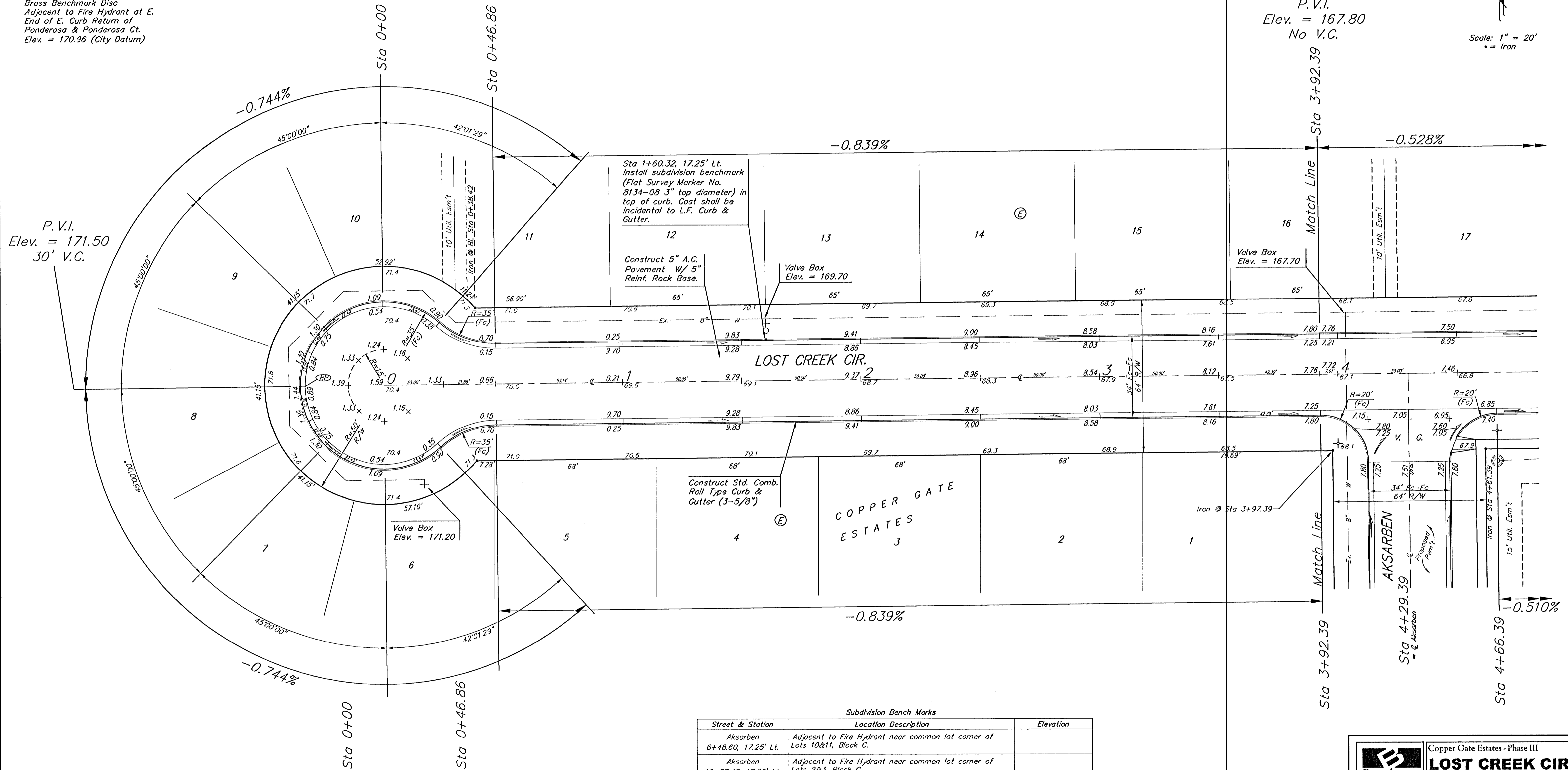


BENCHMARK:
City of Wichita benchmark at the SE corner of intersection of 135th Street West and 13th Street North.
Elev. = 167.83 (City Datum)

Brass Benchmark Disc
Adjacent to Fire Hydrant at E. End of E. Curb Return of Ponderosa & Ponderosa Ct.
Elev. = 170.96 (City Datum)

P.V.I.
Elev. = 167.80
No V.C.

Scale: 1" = 20'
• = Iron



Subdivision Bench Marks		
Street & Station	Location Description	Elevation
Aksarben 6+48.60, 17.25' Lt.	Adjacent to Fire Hydrant near common lot corner of Lots 10&11, Block C.	
Aksarben 12+87.48, 17.25' Lt.	Adjacent to Fire Hydrant near common lot corner of Lots 2&3, Block C.	
Harvest Lane 2+16.93, 17.25' Rt.	Adjacent to Fire Hydrant near common lot corner of Lots 33&34, Block E	
Aksarben Ct. 1+79.59, 14.25' Rt.	Adjacent to Fire Hydrant near common lot corner of Lots 20&21, Block E	
Lost Creek Cir. 1+60.32, 17.25' Lt.	Adjacent to Fire Hydrant near common lot corner of Lots 12&13, Block E	

NOTE: ROLL TYPE CURB & GUTTER TO BE CONSTRUCTED ON THE PAVEMENT SHOWN ON THIS SHEET. TOP OF CURB ELEVATIONS ARE GIVEN FOR FULL HEIGHT CURB.

	Copper Gate Estates - Phase III	
	LOST CREEK CIR.	
STA 0+00 TO STA 4+66.39		
Baughman Company, P.A. 315 Ellis St. Wichita, KS 67211 P 316-262-7711 F 316-262-0149		
ENGINEERING SURVEYING PLANNING LANDSCAPE ARCHITECTURE		
PROJECT NUMBER 472-83671	DESIGN TMS	DRAWN TMS
REVISIONS	APPROVED	DATE 4/13/05
	SCALE Noted	SHEET 12 OF 30
CopperGatePhase3\Su7.dwg		0406E936