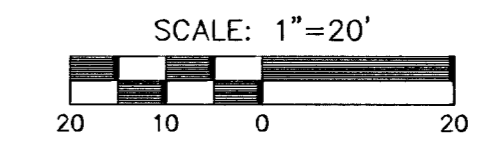


**CEDAR VIEW SECOND ADD.  
STORM WATER SEWER PLANS  
LINE 3**



= LIMITS OF TREE REMOVAL (SEE DETAIL THIS SHEET)

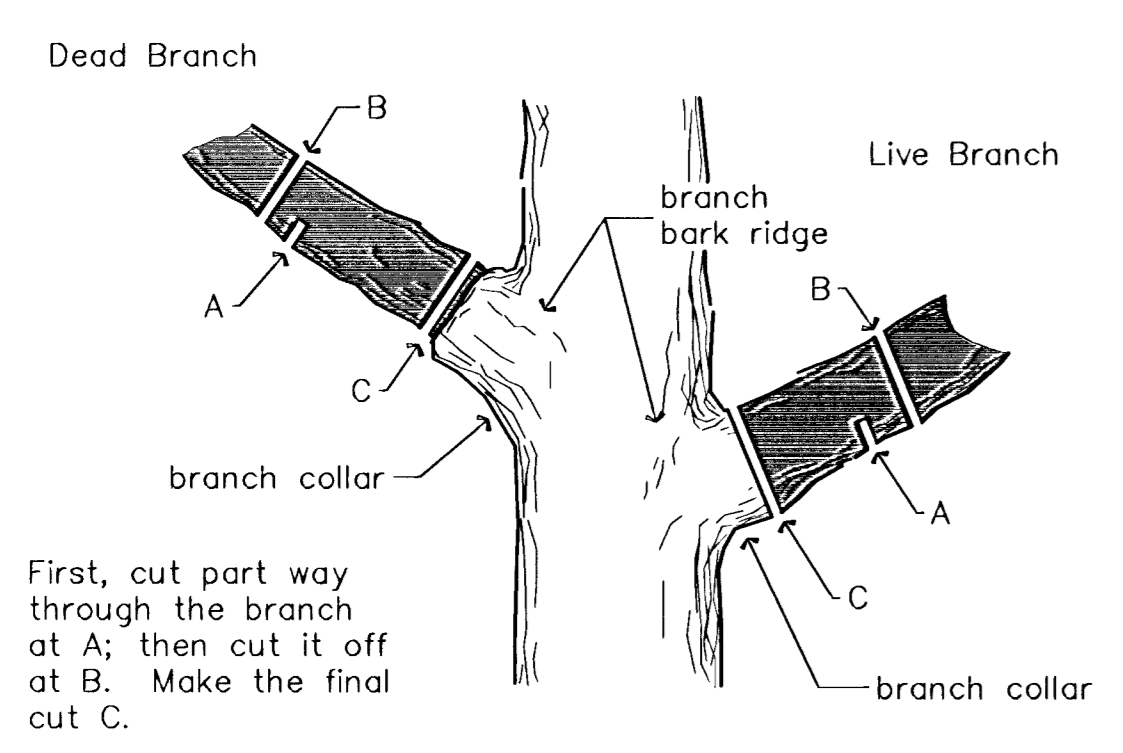
STA. 0+00, LINE 3= ST. STA. 22+56.67, 25.31' RT. BEGIN 24" RCP W/END SECTION AND INSTALL 17 S.Y. OF LIGHT STONE RIPRAP W/GROUTED TOEWALL (L=10', W=2', D=4')

EXIST. FILTER FABRIC TO REMAIN IN PLACE. ANY DAMAGE DONE TO FABRIC DUE TO INSTALLATION OF STORM SEWER SHALL BE REPAIRED AT NO EXTRA COST TO CITY.

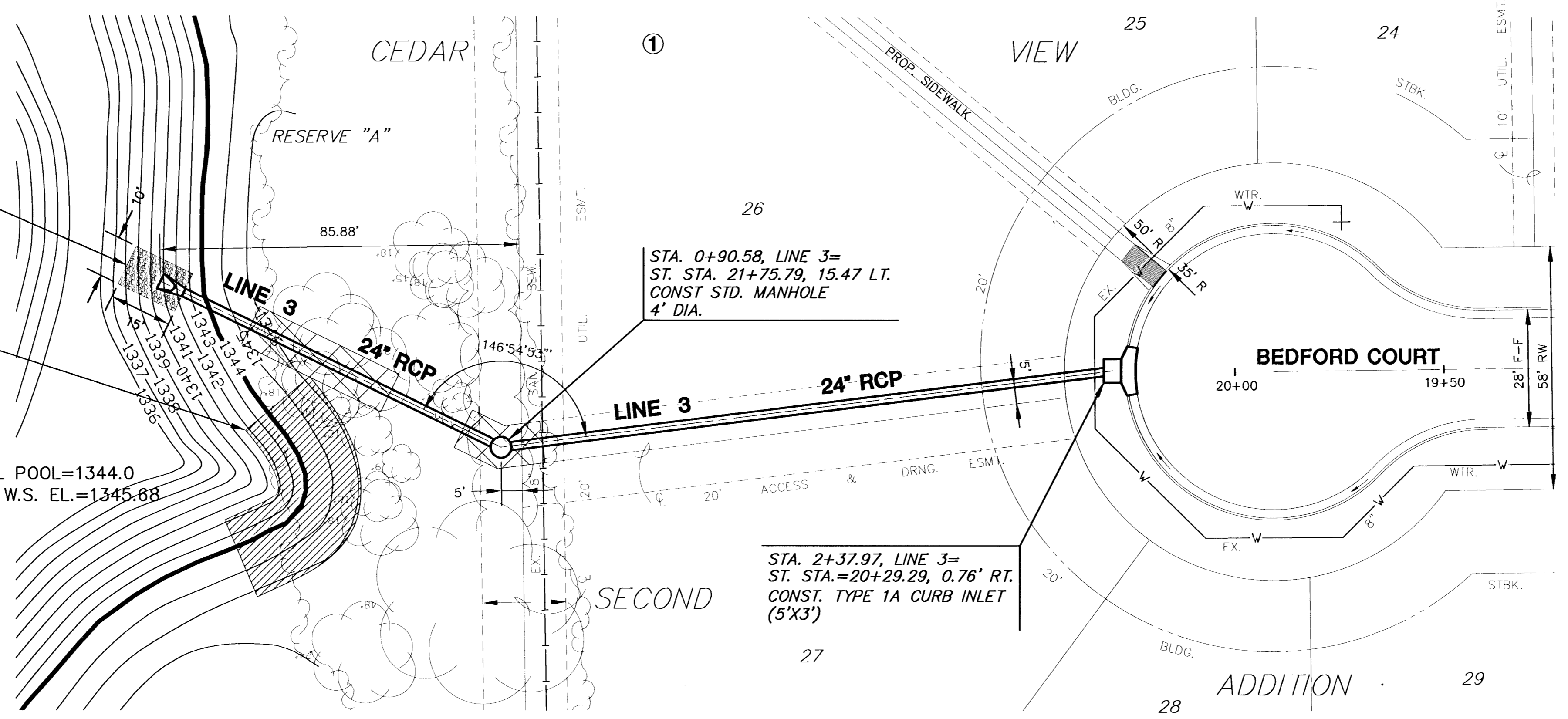
NORMAL POOL=1344.0  
100YR. W.S. EL.=1345.68

STA. 0+90.58, LINE 3= ST. STA. 21+75.79, 15.47 LT. CONST. STD. MANHOLE 4' DIA.

STA. 2+37.97, LINE 3= ST. STA.=20+29.29, 0.76' RT. CONST. TYPE 1A CURB INLET (5'X3')



**TREE TRIMMING DETAIL**  
NOT TO SCALE



**PLAN - LINE 3**  
SCALE: 1" = 20'

**PROFILE - LINE 3**  
HORIZONTAL SCALE: 1" = 20'  
VERTICAL SCALE: 1" = 5'

