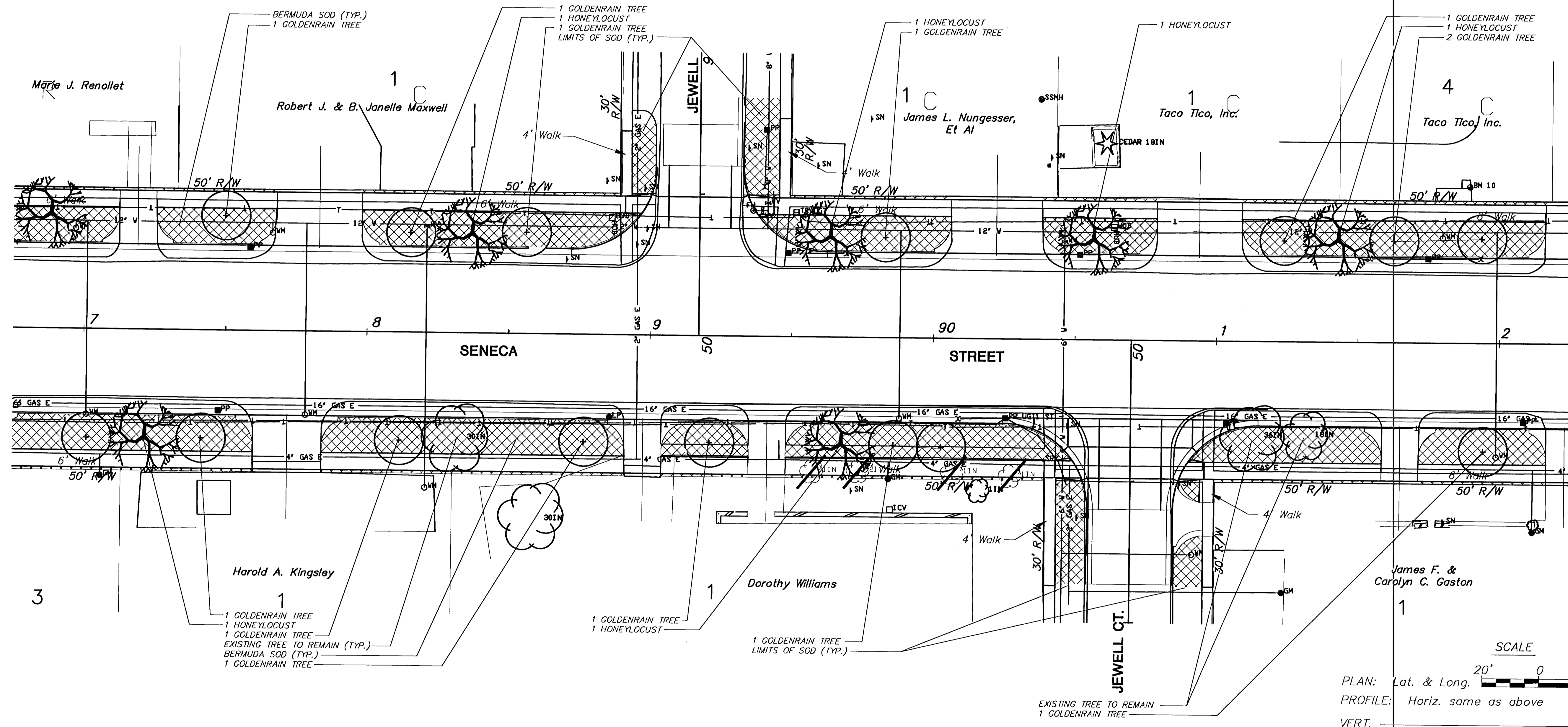


FHWA REG. NO.	STATE	PROJECT NO.	YEAR	SHEET NO.	SHEETS
7	KANSAS	87N-0064-01	1997	65	130



PER-SHEET LANDSCAPE BID QUANTITIES

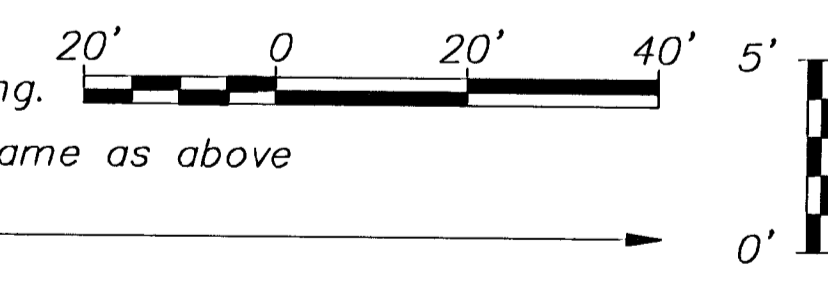
QTY.	BOTANICAL NAME	COMMON NAME	SIZE	ROOT
6	GLEDITSIA TRIACANTHOS VAR. INERMIS CV. IMPERIAL	IMPERIAL HONEYLOCUST	2" CAL.	B&B
14	KOELREUTERIA PANICULATA	GOLDENRAIN TREE	2" CAL.	B&B

BM #10 "L" cut on the N.E. cor. Taco Tico sign base. Sta. 91+89.13
55.11' Lt. Elev.=1288.26

UTILITY OWNERS

- W - City of Wichita Water & Sewer Department (316)268-4908
- T - Southwestern Bell Telephone Co. 1-571-2115
- E - Kansas Gas and Electric (316)832-3169 or 832-3180
- CATV - Multimedia Cablevision (316)262-4270
- SS - City of Wichita Water & Sewer Department (316)268-4908
- SWS - City of Wichita Water & Sewer Department (316)268-4908

SCALE



PLAN: Lat. & Long.
PROFILE: Horiz. same as above
VERT. 0'

KANSAS DEPARTMENT OF TRANSPORTATION
**SOUTH SENECA STREET
87+00 TO 92+00
LANDSCAPE PLAN**

PROJECT NO. 87N-0064-01 SEDGWICK CO.
MID-KANSAS ENGINEERING CONSULTANTS, INC.
WICHITA, KANSAS

DESIGNED BY: DJA/WDM	CHECKED BY: LME/WDM
DRAWN BY: DJA/WDM	DATE: 2/97 SHEET 65 OF 130

94400SE11