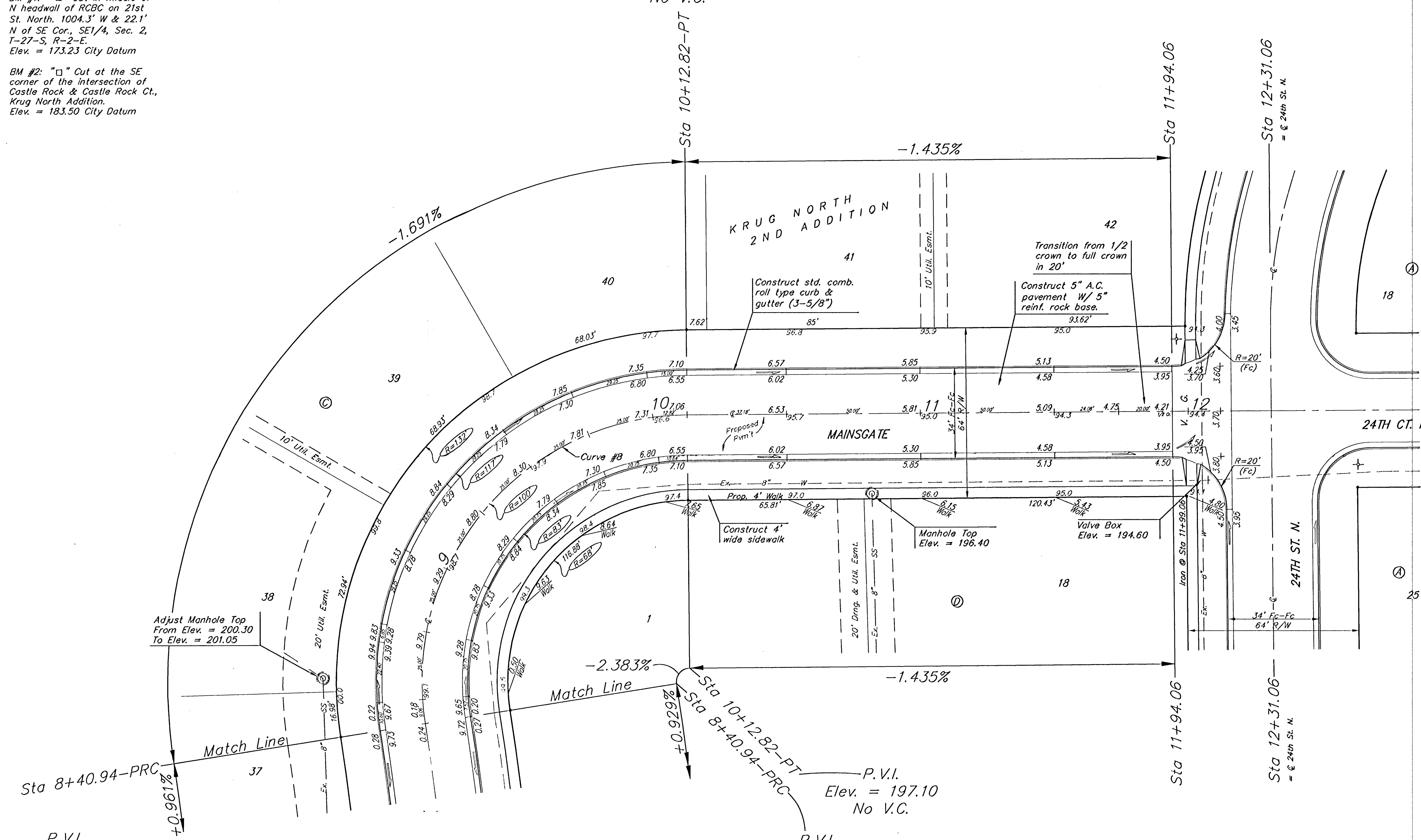


BENCHMARK:  
 BM #1: "□" Cut in middle of  
 N headwall of RCBC on 21st  
 St. North. 1004.3' W & 22.1'  
 N of SE Cor., SE 1/4, Sec. 2,  
 T-27-S, R-2-E.  
 Elev. = 173.23 City Datum

BM #2: "□" Cut at the SE  
 corner of the intersection of  
 Castle Rock & Castle Rock Ct.,  
 Krug North Addition.  
 Elev. = 183.50 City Datum

P.V.I.  
 Elev. = 197.10  
 No V.C.

Scale: 1" = 20'  
 \* = Iron



P.V.I.  
 Elev. = 200.50  
 66' V.C.

P.V.I.  
 Elev. = 197.10  
 No V.C.

P.V.I.  
 Elev. = 200.50  
 56.54' V.C.

Curve #8  
 Curve Data Based on Centerline  
 Rad. = 100' Delta = 98° 28' 43" Tangent = 116.01'  
 Arc = 171.88' L.C. = 151.49' Def/Ft. = 17.18850 Min.

Station	Arc	FACE CHORD LENGTHS		Def.	T. Def.
		8' Lt.	8' Rt.		
8+40.94	-	-	-	0°00'00"	0°00'00"
8+50.00	9.06'	11.32'	6.79'	2°35'43"	2°35'43"
8+75.00	25.00'	31.17'	18.70'	7°09'43"	9°45'28"
9+00.00	25.00'	31.17'	18.70'	7°09'43"	16°55'09"
9+25.00	25.00'	31.17'	18.70'	7°09'43"	24°04'52"
9+50.00	25.00'	31.17'	18.70'	7°09'43"	31°14'34"
9+75.00	25.00'	31.17'	18.70'	7°09'43"	38°24'17"
10+00.00	25.00'	31.17'	18.70'	7°09'43"	45°34'00"
10+12.82	12.82'	16.01'	9.61'	3°40'21"	49°14'21"

NOTE: ROLL TYPE CURB & GUTTER TO BE CONSTRUCTED ON THE PAVEMENT SHOWN ON THIS SHEET. TOP OF CURB ELEVATIONS ARE GIVEN FOR FULL HEIGHT CURB.

	KRUG NORTH 2ND ADD. - PH. III <b>MAINSGATE</b> STA 8+40.94 TO STA 12+31.06	
	<small>Baughman Company, P.A. 315 Elm St. W. Harrisburg, PA 17101-2271 F 717-653-0149          ENGINEERING   SURVEYING   PLANNING   LANDSCAPE ARCHITECTURE</small>	
PROJECT NUMBER 472-84249	DESIGN ATD	DRAWN TMS
REVISIONS	APPROVED	DATE 01/06
	SCALE Noted	SHEET <b>11 OF 39</b>
<small>KrugNorth2nd\Fshell\St6</small>		<small>0509E368</small>