

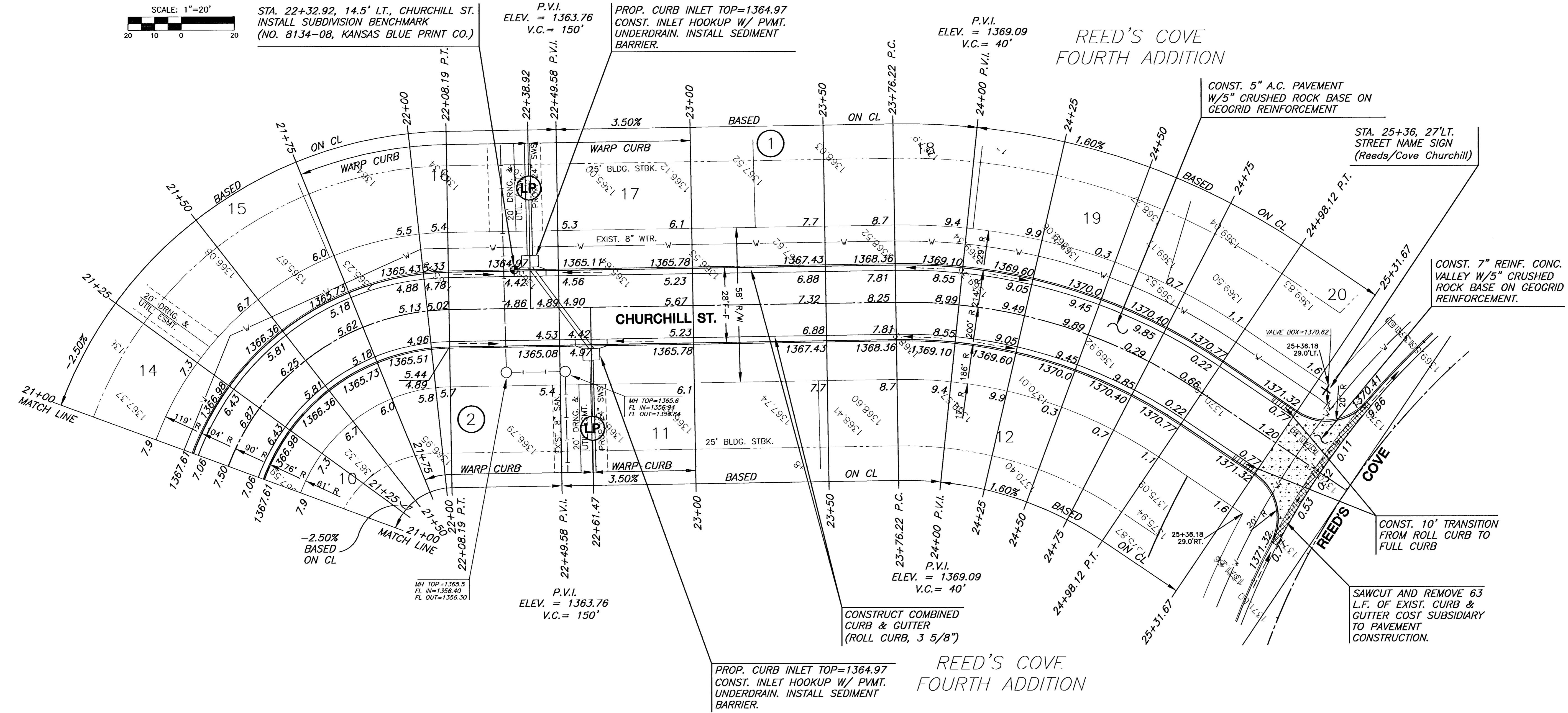
STA. 22+32.92, 14.5' LT., CHURCHILL ST.
INSTALL SUBDIVISION BENCHMARK
(NO. 8134-08, KANSAS BLUE PRINT CO.)

P.V.I.
ELEV. = 1363.76
V.C. = 150'

PROP. CURB INLET TOP=1364.97
CONST. INLET HOOKUP W/ PVMT.
UNDERDRAIN. INSTALL SEDIMENT
BARRIER.

P.V.I.
ELEV. = 1369.09
V.C. = 40'

REED'S COVE
FOURTH ADDITION



PAVING STREETS AND INCIDENTAL DRAINAGE
**REEDS COVE
FOURTH ADDITION**

**CHURCHILL ST.
PAVING PLAN**
SHEET TITLE
472-84385
PROJECT NUMBER

DESIGN BY: SRS
DRAWN BY: BFL
CHECKED BY: GJA

ISSUED: MARCH 2006

REVISED:

SHEET NO.

8 of 33

| CURVE TABLE | | | | | | |
|--|--------|------------|------------|------------|------------------|--|
| $\Delta = 34^{\circ}55'26''$ R = 200.00' T = 62.91' L = 121.91' LC = 120.03' | | | | | | |
| CURVE DATA BASED ON CENTERLINE $\Delta/2 = 17^{\circ}27'43''$ | | | | | | |
| CHORD LENGTH | | | | | | |
| STATION | ARC | 8'off LICb | 8'off RICb | DEFLECTION | TOTAL DEFLECTION | |
| 23+76.22 | - | - | - | 00'00'00" | 00'00'00" | |
| 24+00.00 | 23.78' | 26.38' | 21.15' | 03'24'22" | 03'24'22" | |
| 24+25.00 | 25.00' | 27.73' | 22.24' | 03'34'52" | 06'59'14" | |
| 24+50.00 | 25.00' | 27.73' | 22.24' | 03'34'52" | 10'34'06" | |
| 24+75.00 | 25.00' | 27.73' | 22.24' | 03'34'52" | 14'08'57" | |
| 24+98.13 | 23.13' | 25.66' | 20.57' | 03'18'46" | 17'27'43" | |

Def/Ft = 8.59437 Min.

LEGEND
+ STREET SIGN & SIGN LOCATION
(SEE SIGN ASSEMBLY TABLE
FOR TYPE & STATION OF SIGN)
= VALLEY GUTTER

| NO. | STREET AND STATION | FROM CL | DESCRIPTION | ELEVATIONS |
|-----|------------------------------|----------|--|------------|
| 1 | CHURCHILL ST., STA. 13+21.79 | 12.0' RT | TOP OF CURB AT END OF INLET, CHURCHILL ST. | |

NOTE: CONTRACTOR SHALL INSTALL SUBDIVISION BENCH MARKS ("FLAT SURVEY MARKERS NO. 8134-08 3" TOP DIAMETER" PROVIDED BY KANSAS BLUE PRINT CO., INC.) COSTS TO BE CONSIDERED SUBSIDIARY TO CONSTRUCTION OF COMBINED CURB AND GUTTER.