

PAVING STREETS & INCIDENTAL DRAINAGE
REED'S COVE 4TH ADDITION
WICHITA, KANSAS

EASEMENT GRADING
SHEET TITLE
02121
PROJECT NUMBER

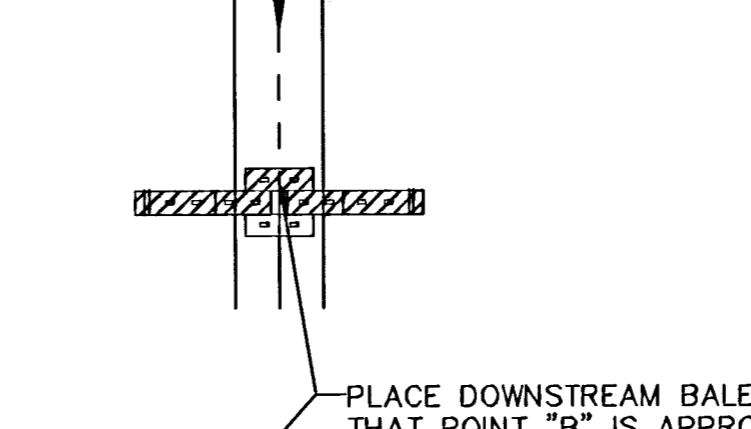
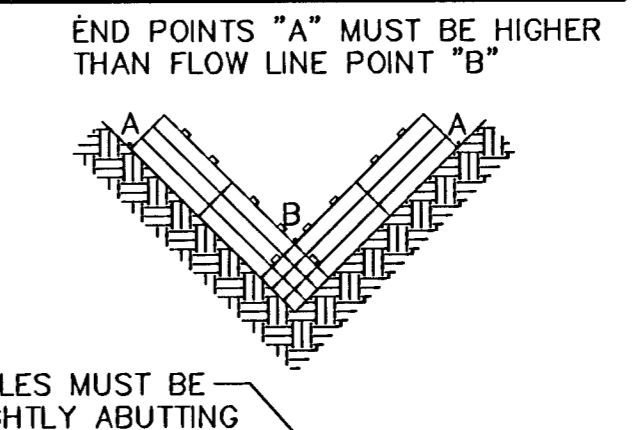
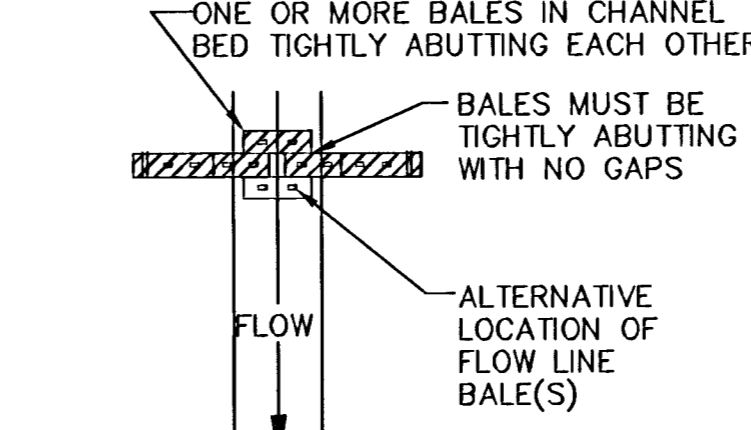
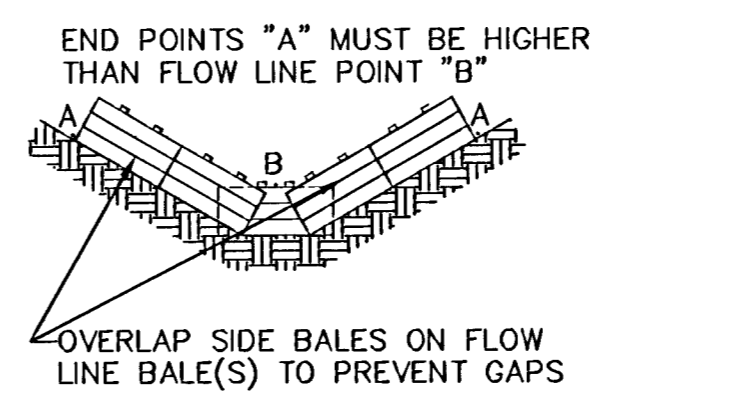
DESIGN BY *SRS*
DRAWN BY *BFL*
CHECKED BY *GJA*

ISSUED **MARCH 2006**
REVISED

SHEET NO.
20 of 33

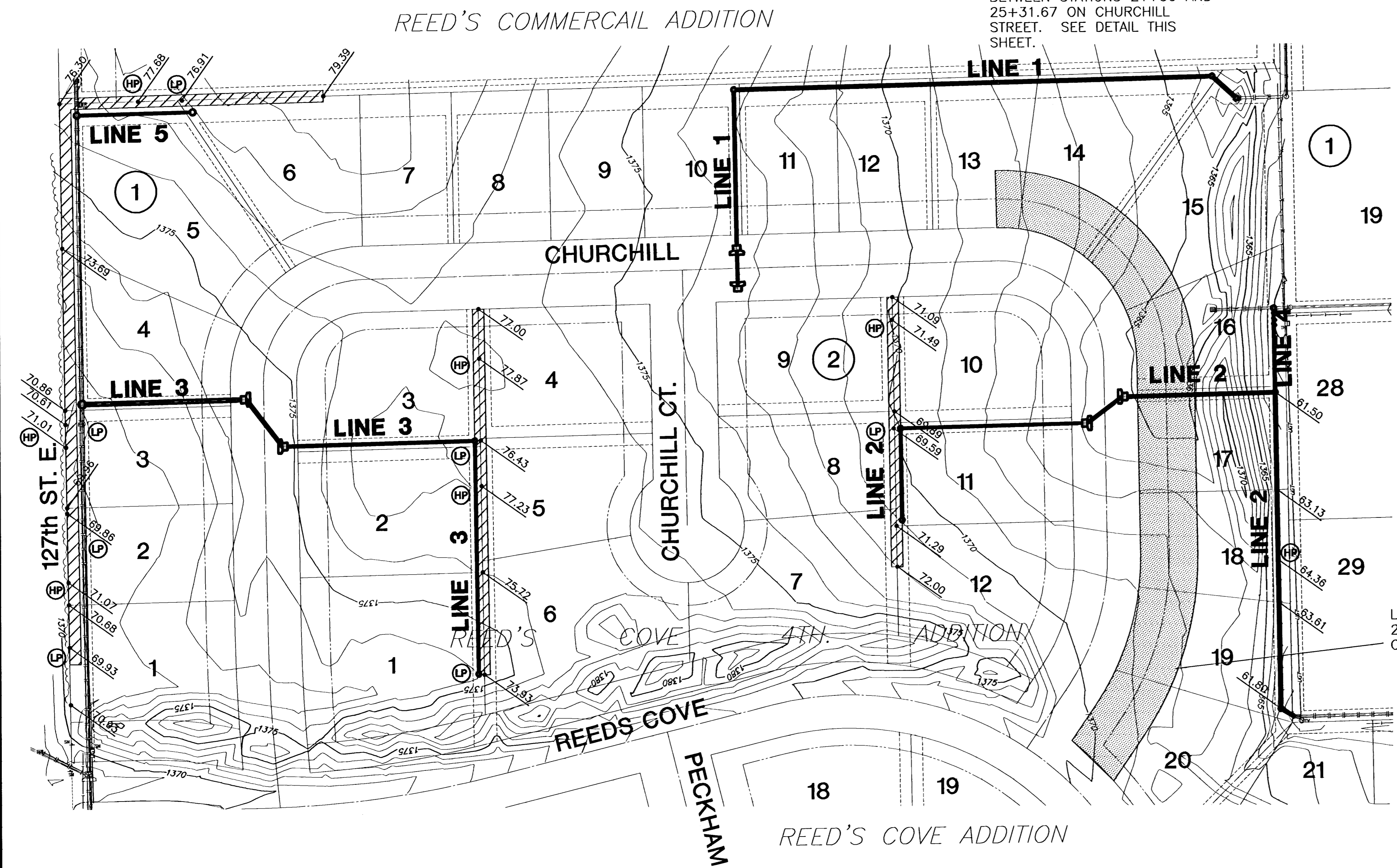
18 INCH BY 36 INCH BALES	VALUE OF Z	MINIMUM NUMBERS OF BALES
	10 OR <	1**
	10-35	2**
	35-50	3**
	50-70	4**
	70 OR >	NOT RECOMMENDED

** ASSUMES DEPTH OF WATER ABOVE POINT "B" WILL NOT EXCEED 6 INCHES



WIDE CHANNELS
NARROW CHANNELS
STRAW BALE DIKES FOR EASEMENT GRADING

NOTE:
EXISTING BERMS SHALL BE USED TO CONSTRUCT LOT FILLS BETWEEN STATIONS 21+50 AND 25+31.67 ON CHURCHILL STREET. SEE DETAIL THIS SHEET.

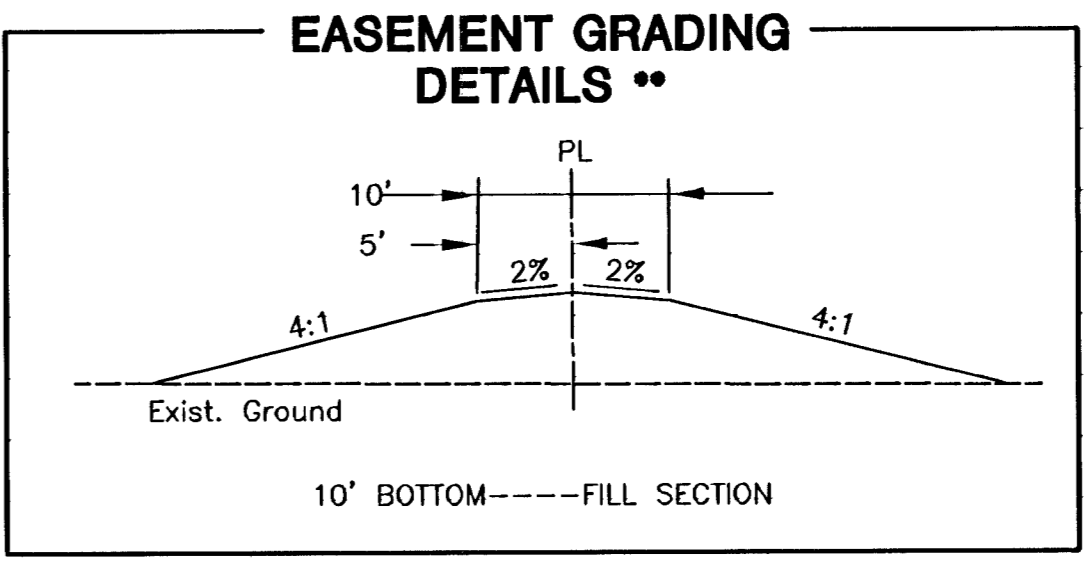
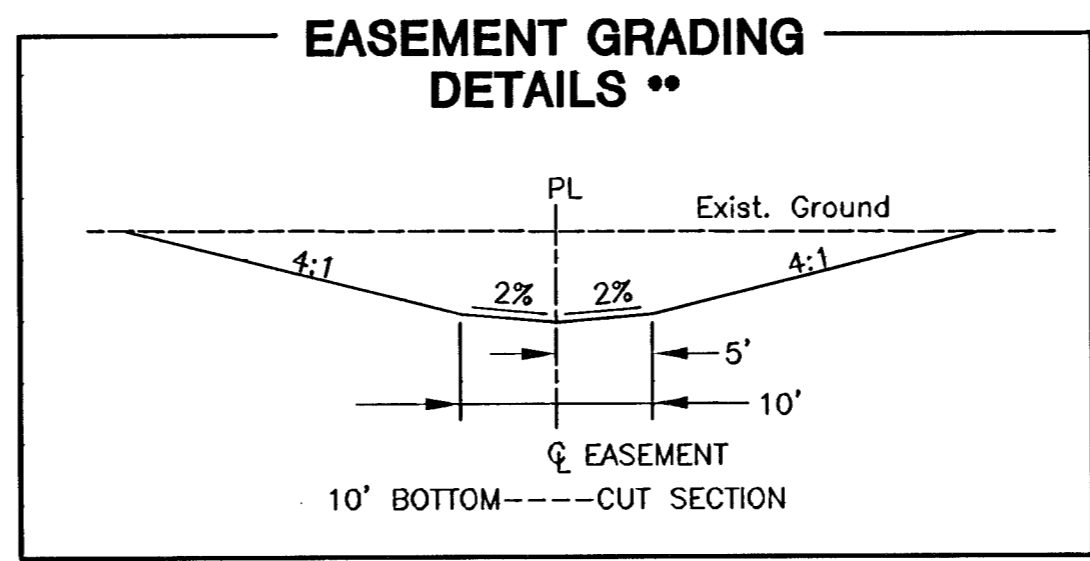
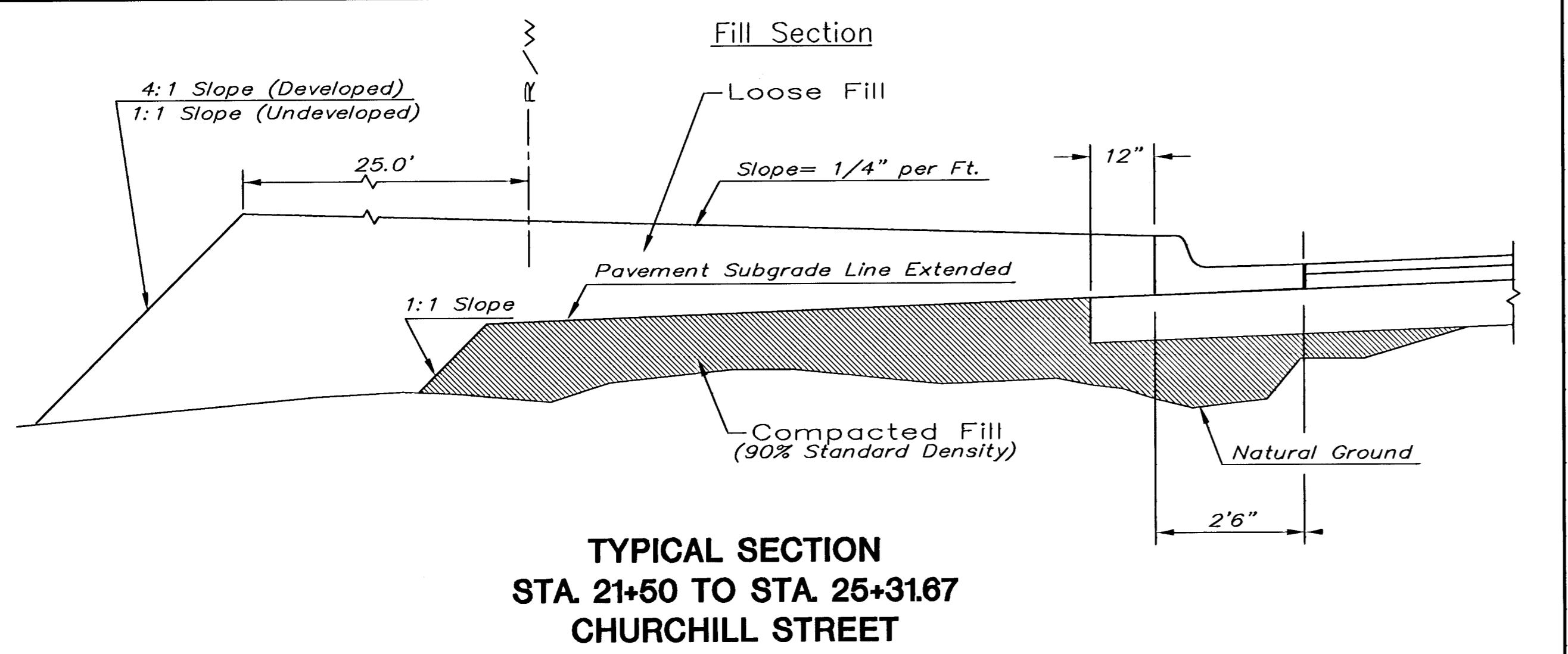
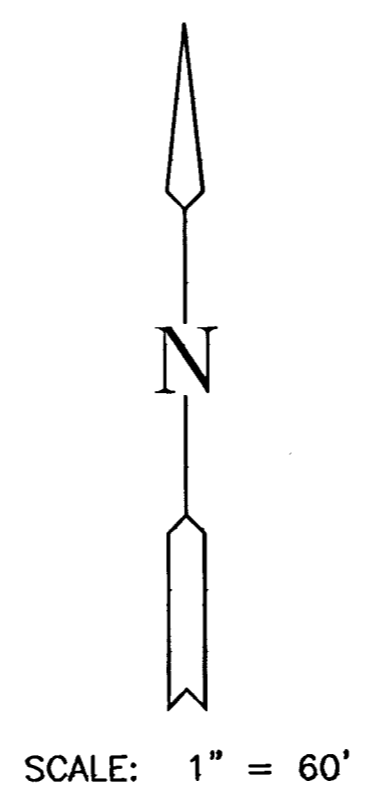


LOT FILLS BETWEEN STATIONS 21+50 AND 25+31.67 ON CHURCHILL STREET.

**Graded widths and slopes may vary as approved by the Engineer to minimize conflict with existing trees.

Easement Grading will be bid on a lump sum basis for grading the easements to the profile and elevations shown on the Easement Grading Plan (this sheet). Approximate quantities of earthwork for easement grading are shown below. These approximate quantities are given for information only. The Contractor should verify the quantities when preparing the proposal.
Cut 350 C.Y. (Approximate)
Fill 50 C.Y. (Approximate)

NOTE:
EXCESS EXCAVATION FROM EASEMENT GRADING SHALL REMAIN ON SITE AND PLACED IN AREAS AS DIRECTED BY ENGINEER.



EL=EASEMENT LINE
PL=PROPERTY LINE

PACIFIED Technology, March 14, 2006 @ 02:52PM

H:\CIVIL\02121\4th Addition\SW\02121EG