

FINAL PLAT

HAWTHORNE THIRD ADDITION

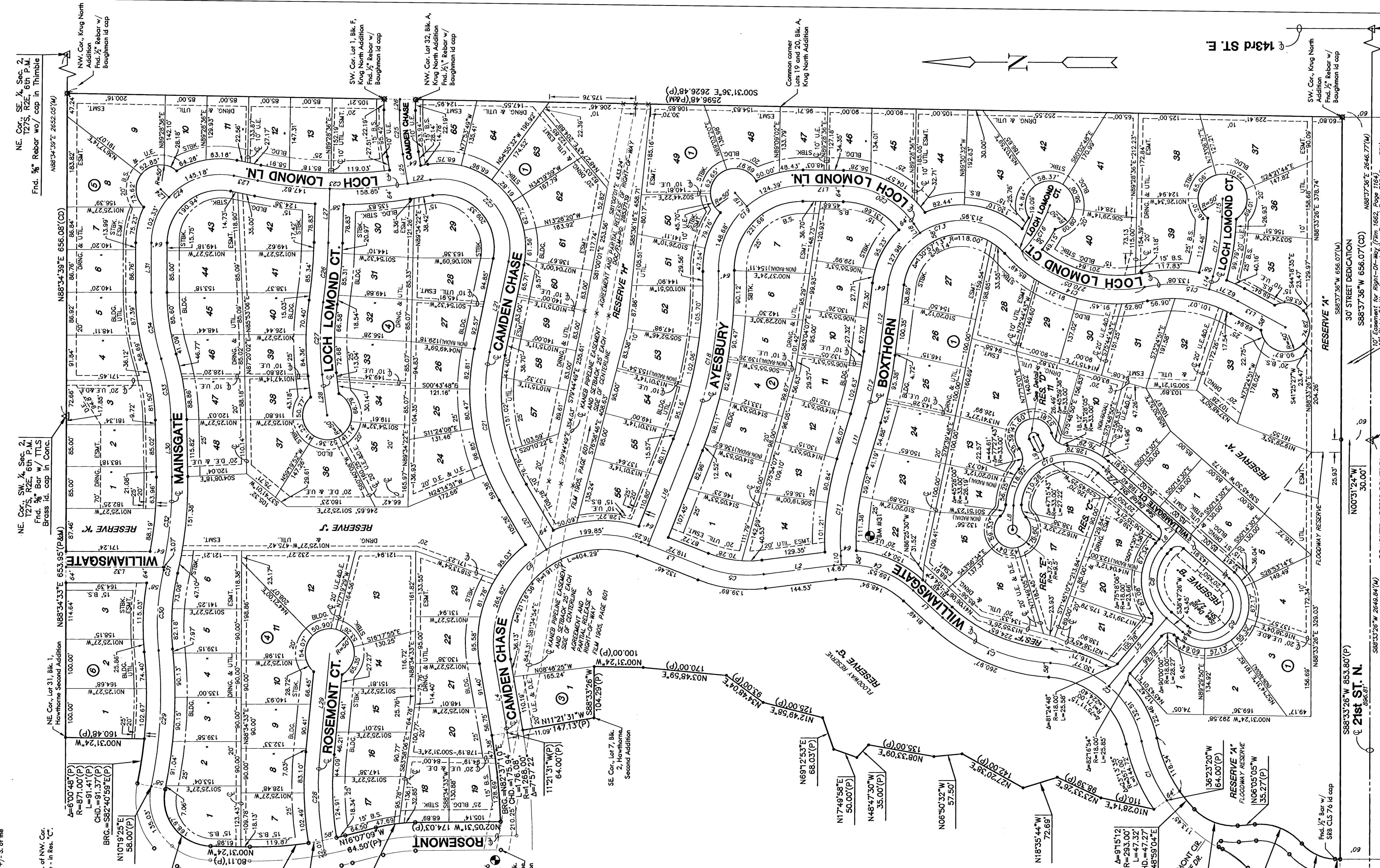
AN ADDITION TO WICHITA, SEDGWICK COUNTY, KANSAS

BENCH MARKS

BM #31 "T" post 41' +/- SE. of SE. Cor. Williamsgate and Boxthorn and lying 27.9' +/- S. of the North line of Lot 22, Blk. 1.
Elev.=1364.243(NGVD)

BM #36 "T" post 5' +/- N. & 5' +/- W. of NW. Cor. Rosemont and Camden Chase - in "C".
Elev.=1368.63(NGVD)

181.23 City datum



LEGEND

- △ = Section Corner Monument Found
- ⊠ = Found Survey Monument (See annotated caption for type)
- = Found 5/8" Rebar W/
- = ANECS CLS 39 Id. Cap
- ⊙ = Set 5/8" Rebar W/
- ⊙ = ANECS CLS 39 Id. Cap
- X = Node
- U.E. = Utility Easement
- D.E. = Drainage Easement
- (D) = Deeded
- (P) = Plotted
- (M) = Measured

CURVE TABLE

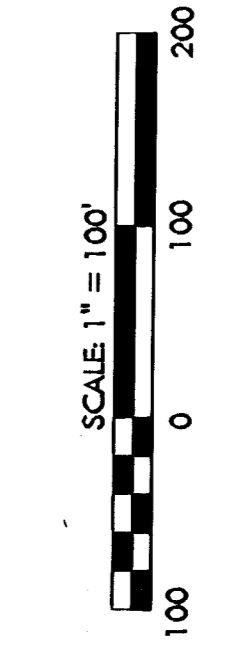
CURVE	LENGTH	RADIUS	DEGTA
C1	131.26	325.00	23.0837
C2	263.52	650.00	46.1674
C3	263.52	650.00	46.1674
C4	174.35	435.88	30.7782
C5	455.97	1139.68	79.4455
C6	188.77	472.00	30.8344
C7	226.30	565.75	36.3527
C8	226.30	565.75	36.3527
C9	226.30	565.75	36.3527
C10	226.30	565.75	36.3527
C11	190.64	476.60	29.5133
C12	190.64	476.60	29.5133
C13	343.33	858.33	53.1166
C14	289.14	722.85	45.0357
C15	110.00	276.60	14.3335
C16	110.00	276.60	14.3335
C17	122.91	307.27	16.1055
C18	307.27	768.17	40.5825
C19	307.27	768.17	40.5825
C20	169.41	428.53	22.2913
C21	295.84	740.00	42.2236
C22	271.35	678.38	39.0308
C23	306.57	766.43	43.4018
C24	247.31	618.27	35.1743
C25	247.31	618.27	35.1743
C26	121.31	309.14	17.5853
C27	121.31	309.14	17.5853
C28	177.88	445.23	24.1476
C29	177.88	445.23	24.1476
C30	164.82	412.00	22.5115
C31	380.81	952.00	52.5511
C32	124.32	311.99	16.2019
C33	124.32	311.99	16.2019
C34	136.37	340.00	17.2154

LINE TABLE

LINE	LENGTH	BEARING
L1	81.49	S41°00'00"W
L2	44.53	S08°48'11"W
L3	135.97	S19°53'11"W
L4	48.12	N79°38'55"E
L5	45.53	N50°14'30"W
L6	342.93	S59°42'00"W
L7	49.28	S89°15'57"E
L8	49.28	S67°40'38"E
L9	17.60	N85°24'00"E
L10	17.60	S64°24'00"E
L11	140.00	S24°24'00"E
L12	110.00	N27°04'13"E
L13	110.00	N27°04'13"E
L14	27.44	N79°45'41"E
L15	37.61	N89°50'49"W
L16	215.41	N70°00'00"W
L17	83.38	N01°00'00"W
L18	17.60	N89°50'49"W
L19	36.54	S27°04'13"E
L20	135.22	S57°57'53"W
L21	187.42	S79°44'49"E
L22	46.78	S10°29'59"E
L23	49.73	S09°57'27"W
L24	49.73	S09°57'27"W
L25	49.73	S09°57'27"W
L26	23.19	S70°17'03"W
L27	110.35	S89°54'29"W
L28	83.91	N81°32'40"E
L29	204.69	S55°59'59"E
L30	115.82	N87°00'00"E
L31	115.82	N87°00'00"E
L32	200.41	N01°23'33"W

MKEC
ENGINEERING
CONSULTANTS

1111 W. VEEB ROAD
WICHITA, KS 67202
316.684.6100



SE. Cor. SE. 1/4, Sec. 2, 2177S, R2E, 6th P.M. Frnd. 3/4" Rebar w/ Bougainvillea id cap

SW. Cor. Sec. 2, 2177S, R2E, 6th P.M. Frnd. 3/4" Rebar w/ Bougainvillea id cap

SE. Cor. SE. 1/4, Sec. 2, 2177S, R2E, 6th P.M. Frnd. 3/4" Rebar w/ Bougainvillea id cap