

J:\PROJECTS\2022\12\10\10427_PERFECTION_COURTYARDS_AT_MOORINGS\DWG\12427-05-500-PH1.DWG
 PLOTTED: Thursday, September 14, 2023 @ 02:25PM

BENCHMARK POINTS

BM #101
 Chiseled "X"
 N = 1713560.12 E = 1638541.17 Elev. = 1329.89

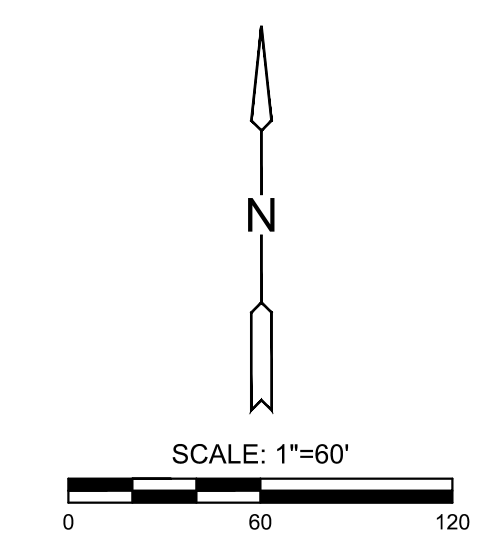
CONTROL POINTS

CP #100
 PK-Nail
 N = 1714419.01 E = 1638538.08 Elev. = 1328.84

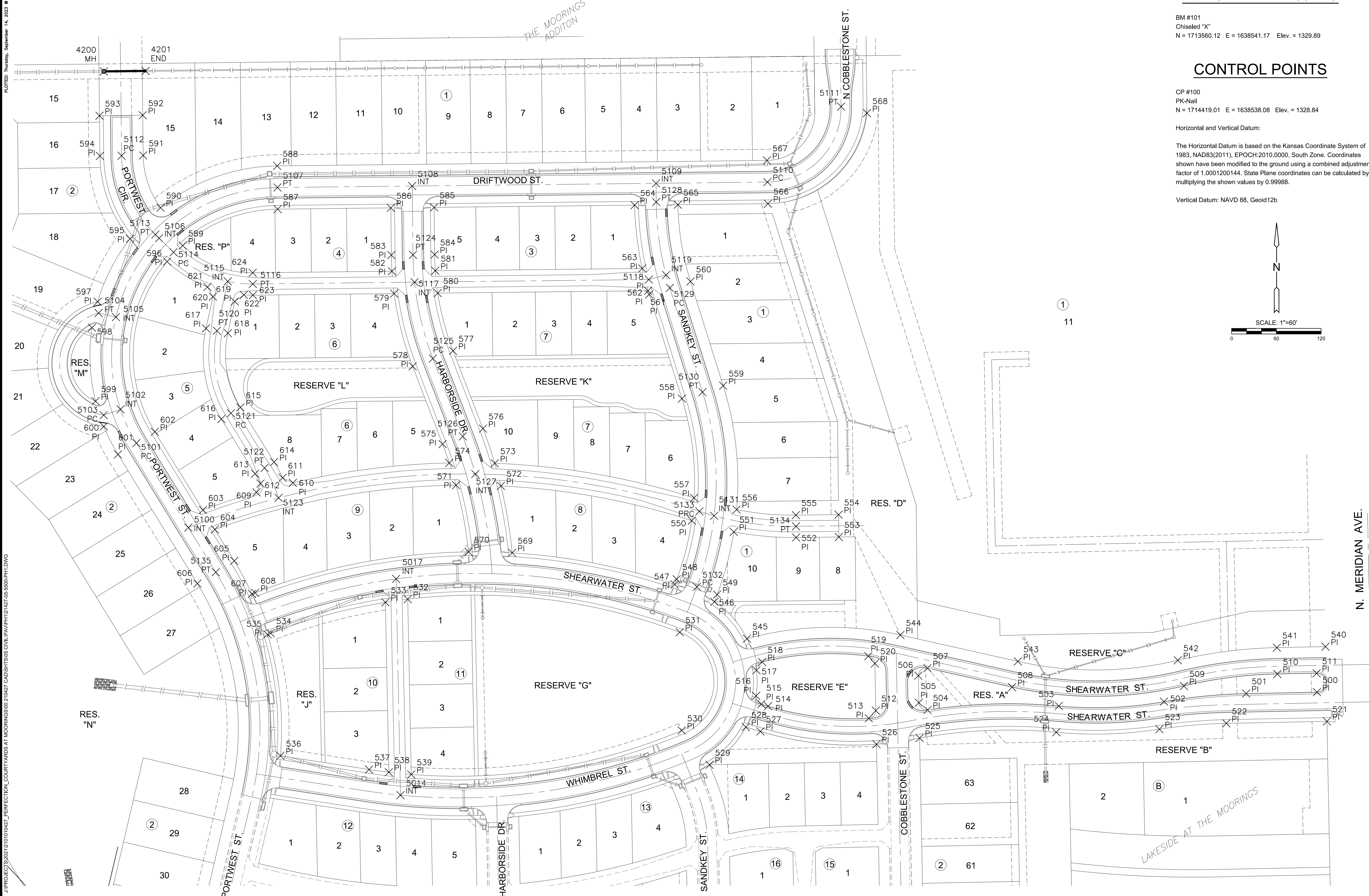
Horizontal and Vertical Datum:

The Horizontal Datum is based on the Kansas Coordinate System of 1983, NAD83(2011), EPOCH:2010.0000, South Zone. Coordinates shown have been modified to the ground using a combined adjustment factor of 1.0001200144. State Plane coordinates can be calculated by multiplying the shown values by 0.99988.

Vertical Datum: NAVD 88, Geoid12b



PAVING & INCIDENTAL DRAINAGE PLANS FOR **COURTYARDS AT THE MOORINGS** PHASE 1 - PART B



©2023
 MKEC Engineering
 All Rights Reserved
 www.mkec.com
 These drawings and their contents, including, but not limited to, all concepts, designs, & ideas are the exclusive property of MKEC Engineering (MKEC), and may not be used or reproduced in any way without the express consent of MKEC.

BUBBLE MAP

PROJECT NO.	472-2022-085820B	
DATE	SEPT. 2023	
SCALE	1"=60'	
DESIGNED	DRAWN	CHECKED
DFL	JWC	SPE
NO.	REVISION	DATE
SHEET NO.		
29 OF 51		