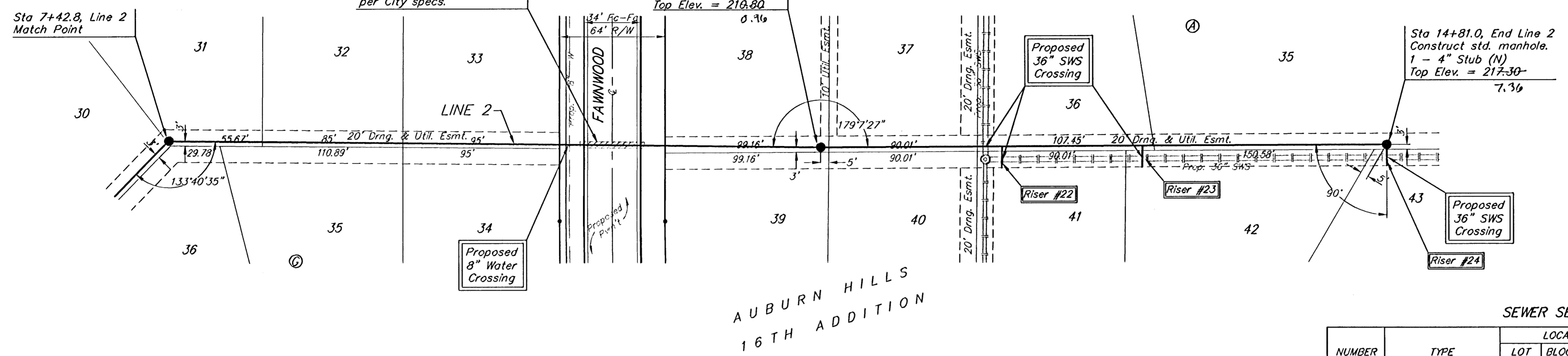


BENCHMARKS:
 BM #1: "I" Cut on Top of Curb at West Line of Lot 7, Block A, Auburn Hills 5th Addition. Elev. = 207.73 (City Datum)
 BM #2: Disc in Back of Curb, North of Front Corner Common to Lots 23 and 24, Block D, Auburn Hills 12th Addition. Elev. = 191.84 (City Datum)
 BM #3: "I" Cut in Middle of Curb Inlet Top Adjacent to the South Corner of Lot 15, Block B. Elev. = 193.65 (City Datum)



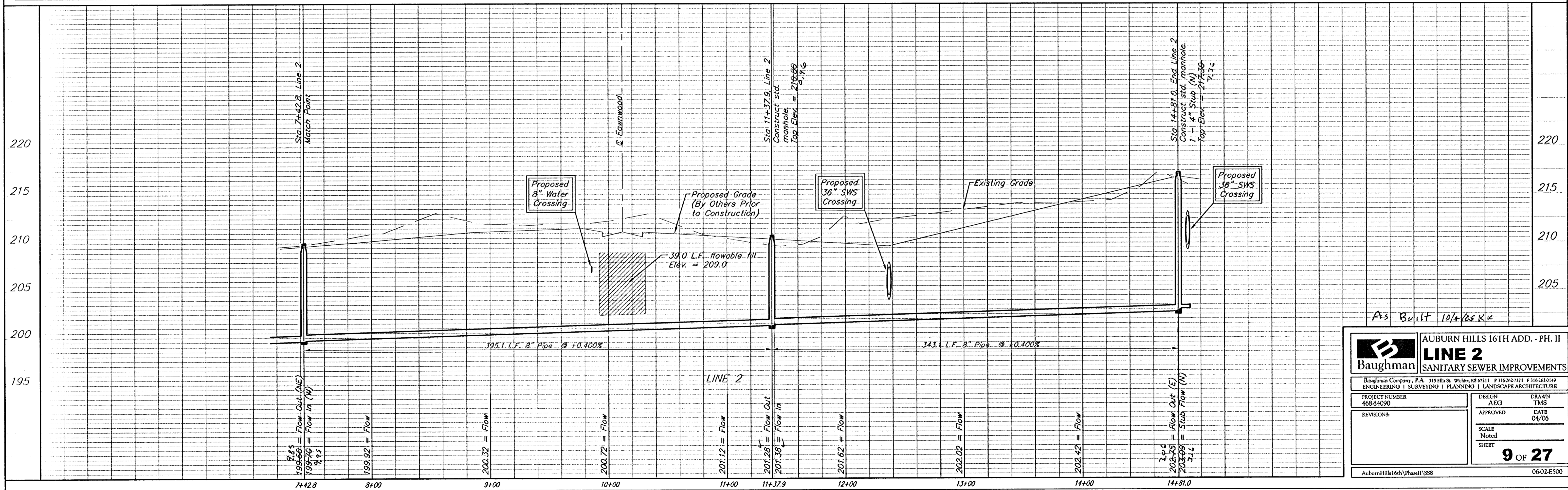
Scale: 1" = 40' Horizontal
 1" = 5' Vertical
 • = Iron

Remove trees only as necessary for sanitary sewer construction and only with permission of Developer or Baughman Co. Cost of removal to be incidental to lump sum bid item "Site Clearing & Restoration".

SEWER SERVICE TABLE

NUMBER	TYPE	LOCATION			FOR INFORMATION ONLY	
		LOT NO.	BLOCK NO.	LINE NO. / DIRECTION	APPROXIMATE LENGTH 4" PIPE	
22 ^v	8" X 4" Tee	41	A	2 12+48/Rt.	4.0'	13'
23 ^v	8" X 4" Tee	42	A	2 13+33/Rt.	6.0'	13'
24 ^v	4" Stub	43	A	2 14+81.0/Rt.	9.5'	13'

NOTE: Vertical Riser Pipe shall be extended to 2' minimum above ground water elevation and 4' maximum below proposed ground elevation.



As Built 10/4/08 KIK

Baughman		AUBURN HILLS 16TH ADD. - PH. II	
LINE 2		SANITARY SEWER IMPROVEMENTS	
Baughman Company, P.A. 315 Ellis St. Wichita, KS 67211 P 316-262-7271 F 316-262-0149 ENGINEERING SURVEYING PLANNING LANDSCAPE ARCHITECTURE			
PROJECT NUMBER 468-4090	DESIGN AEG	DRAWN TMS	APPROVED DATE 04/06
REVISIONS:	SCALE Noted SHEET 9 OF 27		
AuburnHills16thPhase1SS8		0602.E500	