

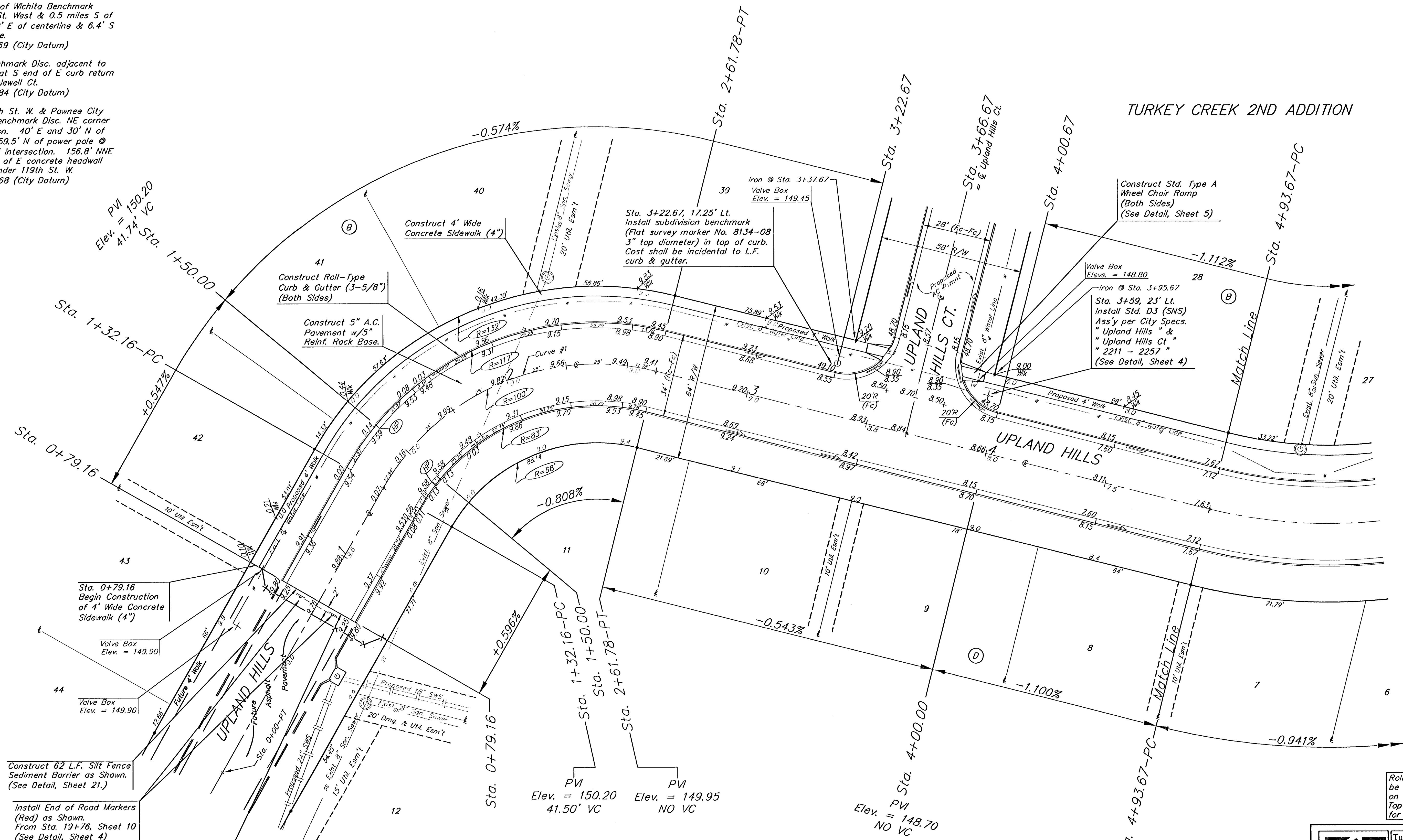
**Benchmarks:**  
 BM #1: City of Wichita Benchmark  
 Disc. 119th St. West & 0.5 miles S of  
 Kellogg. 42.2' E of centerline & 6.4' S  
 of Power Pole.  
 Elev. = 144.69 (City Datum)

BM #2: Benchmark Disc. adjacent to  
 fire hydrant at S end of E curb return  
 of Jewell & Jewell Ct.  
 Elev. = 146.84 (City Datum)

BM #3: 119th St. W. & Pawnee City  
 of Wichita Benchmark Disc. NE corner  
 of intersection. 40' E and 30' N of  
 centerline. 59.5' N of power pole @  
 SE corner of intersection. 156.8' NNE  
 of centerline of E concrete headwall  
 on culvert under 119th St. W.  
 Elev. = 148.68 (City Datum)

Scale: 1" = 20'  
 • = Iron

TURKEY CREEK 2ND ADDITION



Construct 4' Wide  
 Concrete Sidewalk (4")  
 Sta. 1+50.00

Construct Roll-Type  
 Curb & Gutter (3-5/8")  
 (Both Sides)  
 Sta. 1+32.16-PC

Construct 5" A.C.  
 Pavement w/5"  
 Reinf. Rock Base.  
 Sta. 0+79.16

Sta. 3+22.67, 17.25' Lt.  
 Install subdivision benchmark  
 (Flat survey marker No. 8134-08  
 3" top diameter) in top of curb.  
 Cost shall be incidental to L.F.  
 curb & gutter.

Construct Std. Type A  
 Wheel Chair Ramp  
 (Both Sides)  
 (See Detail, Sheet 5)

Valve Box  
 Elev. = 148.80  
 Iron @ Sta. 3+95.67  
 Sta. 3+59, 23' Lt.  
 Install Std. D3 (SNS)  
 Assy per City Specs.  
 "Upland Hills" &  
 "Upland Hills Ct."  
 "2211 - 2257"  
 (See Detail, Sheet 4)

Sta. 0+79.16  
 Begin Construction of  
 4' Wide Concrete  
 Sidewalk (4")

Valve Box  
 Elev. = 149.90

Valve Box  
 Elev. = 149.90

Construct 62 L.F. Silt Fence  
 Sediment Barrier as Shown.  
 (See Detail, Sheet 21.)

Install End of Road Markers  
 (Red) as Shown.  
 From Sta. 19+76, Sheet 10  
 (See Detail, Sheet 4)

Sta. 0+79.16  
 Begin Construction of  
 5" A.C. Pavement w/  
 5" Reinf. Rock Base

TURKEY CREEK 2ND ADDITION

Curve #1  
 Curve Data Based on Centerline  
 Rad. = 100' Delta = 74° 16' 10" Tangent = 75.72'  
 Arc = 129.62' L.C. = 120.74' Del./Fl. = 17.18935 Min.

Station	FACE CHORD LENGTHS		Defl.	T. Defl.
	8' Lt.	8' Rt.		
1+32.16	-	-	0°00'00"	0°00'00"
1+50.00	17.84'	22.27'	13.36'	5°08'39"
1+75.00	25.00'	31.17'	18.70'	7°09'46"
2+00.00	25.00'	31.17'	18.70'	7°09'44"
2+25.00	25.00'	31.17'	18.70'	7°09'44"
2+50.00	25.00'	31.17'	18.70'	7°09'44"
2+61.78	11.78'	14.72'	8.83'	3°22'29"

Roll type curb & gutter to  
 be constructed on the pavement  
 on this sheet.  
 Top of curb elevation are given  
 for full height curb.

Turkey Creek 2nd Addition - Phase II  
**UPLAND HILLS**  
 STA. 0+00 STA. 4+93.67

Baughman  
 ENGINEERING | SURVEYING | PLANNING | LANDSCAPE ARCHITECTURE

PROJECT NUMBER: 472-84022  
 DESIGN: MWS/JAK  
 DRAWN: JAK  
 APPROVED: DATE 4/12/06  
 SCALE: Noted  
 SHEET: 6 OF 41

E:\Eng\Turkey Creek 2nd\Phase 2\Set1 06-01-E482