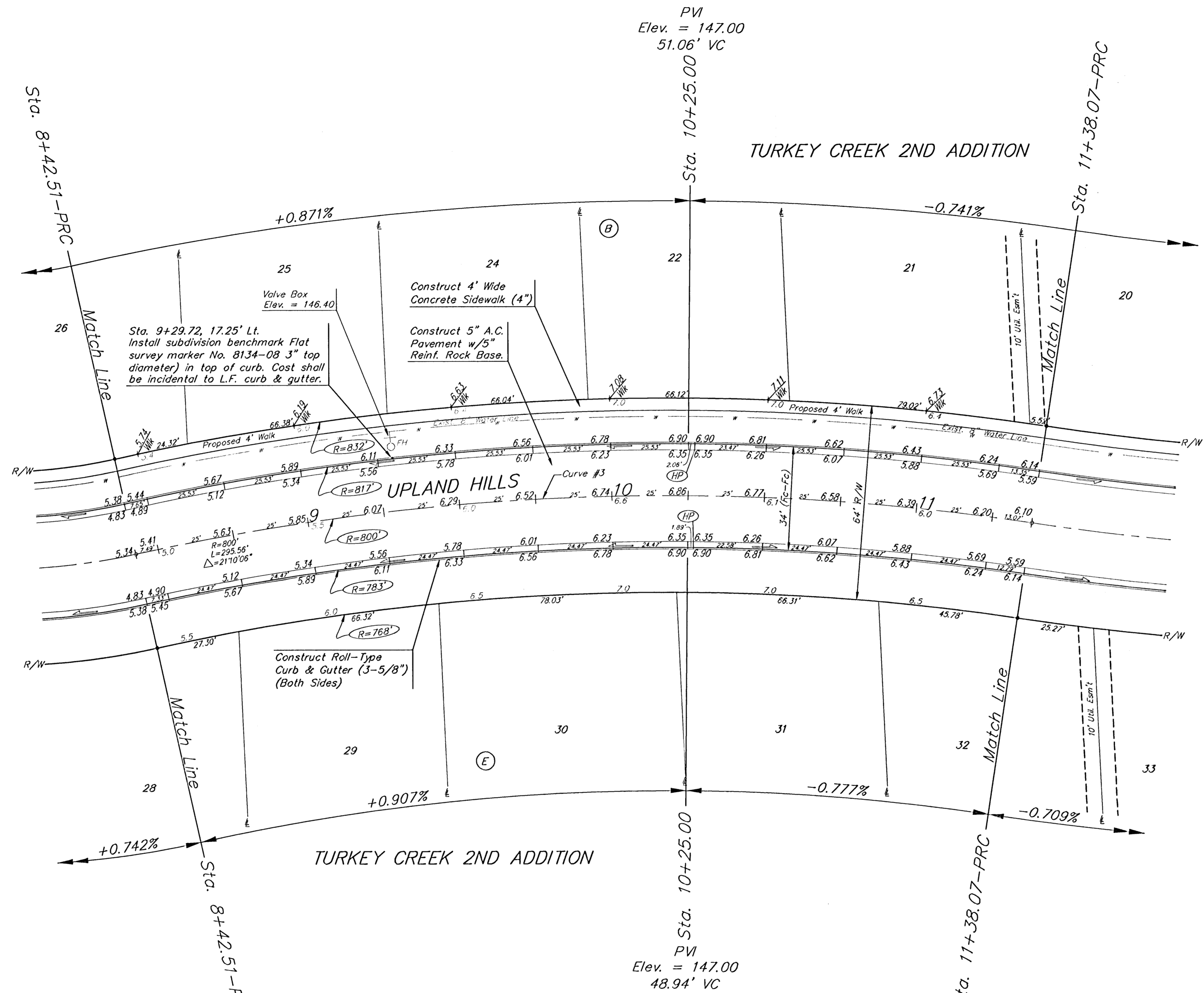
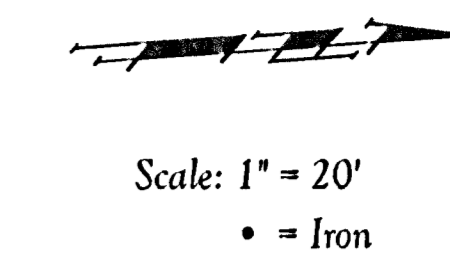


**Benchmarks:**  
 BM #1: City of Wichita Benchmark  
 Disc. 119th St. West & 0.5 miles S of  
 Kellogg. 42.2' E of centerline & 6.4' S  
 of Power Pole.  
 Elev. = 144.69 (City Datum)

BM #2: Benchmark Disc. adjacent to  
 fire hydrant at S end of E curb return  
 of Jewell & Jewell Ct.  
 Elev. = 146.84 (City Datum)

BM #3: 119th St. W. & Pawnee City  
 of Wichita Benchmark Disc. NE corner  
 of intersection. 40' E and 30' N of  
 centerline. 59.5' N of power pole @  
 SE corner of intersection. 156.8' NNE  
 of centerline of E concrete headwall  
 on culvert under 119th St. W.  
 Elev. = 148.68 (City Datum)



Curve #3  
 Curve Data Based on Centerline  
 Rad. = 800' Delta = 21° 10' 06" Tangent = 149.49'  
 Arc = 295.56' L.C. = 293.89' Del/Ft. = 2.14863 Min.

Station	Arc	FACE CHORD LENGTHS		Defl.	T. Defl.
		B' Lt.	B' Rt.		
8+42.51	-	-	-	0°00'00"	0°00'00"
8+50.00	7.49'	7.72'	7.26'	0°16'06"	0°16'06"
8+75.00	25.00'	25.78'	0.00'	0°53'43"	1°09'49"
9+00.00	25.00'	25.78'	48.43'	0°53'42"	2°03'31"
9+25.00	25.00'	25.78'	24.22'	0°53'43"	2°57'14"
9+50.00	25.00'	25.78'	24.22'	0°53'43"	3°50'57"
9+75.00	25.00'	25.78'	24.22'	0°53'43"	4°44'40"
10+00.00	25.00'	25.78'	24.22'	0°53'43"	5°38'23"
10+25.00	25.00'	25.78'	24.22'	0°53'43"	6°32'06"
10+50.00	25.00'	25.78'	24.22'	0°53'43"	7°25'49"
10+75.00	25.00'	25.78'	24.22'	0°53'43"	8°19'32"
11+00.00	25.00'	25.78'	24.22'	0°53'43"	9°13'15"
11+25.00	25.00'	25.78'	24.22'	0°53'43"	10°06'58"
11+38.07	13.07'	13.48'	12.66'	0°28'05"	10°35'03"

PVI  
 Elev. = 145.38  
 NO VC

Subdivision Bench Marks

Street & Station	Location Description	Elevation
Upland Hills 3+22.67, 17.25' Lt.	Adjacent to Fire Hydrant at S. End of W. Curb Return of Upland Hills & Upland Hills Ct	
Upland Hills 2+46.27, 17.25' Rt.	Adjacent to Fire Hydrant near common lot corner of Lots 24 & 25, Block B	
Jewell 15+71.07, 17.25' Lt.	Adjacent to Fire Hydrant near common lot corner of Lots 14 & 15, Block B	
Upland Hills Ct 2+53.00, 14.25' Rt.	Adjacent to Fire Hydrant near common lot corner of Lots 30 & 31, Block B	
Grant 0+39.22, 17.25' Rt.	Adjacent to Fire Hydrant at E. End of S. Curb Return of Upland Hills & Grant	
Jewell Ct. 1+77.55, 14.25' Rt.	Adjacent to Fire Hydrant near common lot corner of Lots 45 & 46, Block E	

Roll type curb & gutter to be constructed on the pavement on this sheet.  
 Top of curb elevation are given for full height curb.

Turkey Creek 2nd Addition - Phase II  
**UPLAND HILLS**  
 STA. 8+42.51 STA. 11+38.07

Baughman Engineering & Surveying, P.A. 315 5th St. W. Winona, MN 55911 P 562-3311 F 562-3314

PROJECT NUMBER 472-84029	DESIGN MWS/JAK	DRAWN JAK
REVISIONS:	APPROVED	DATE 4/12/06
SCALE Noted		SHEET <b>8 OF 41</b>

E:\Eng\Turkey Creek 2nd\Phase 2\Set3 06-01-E482