

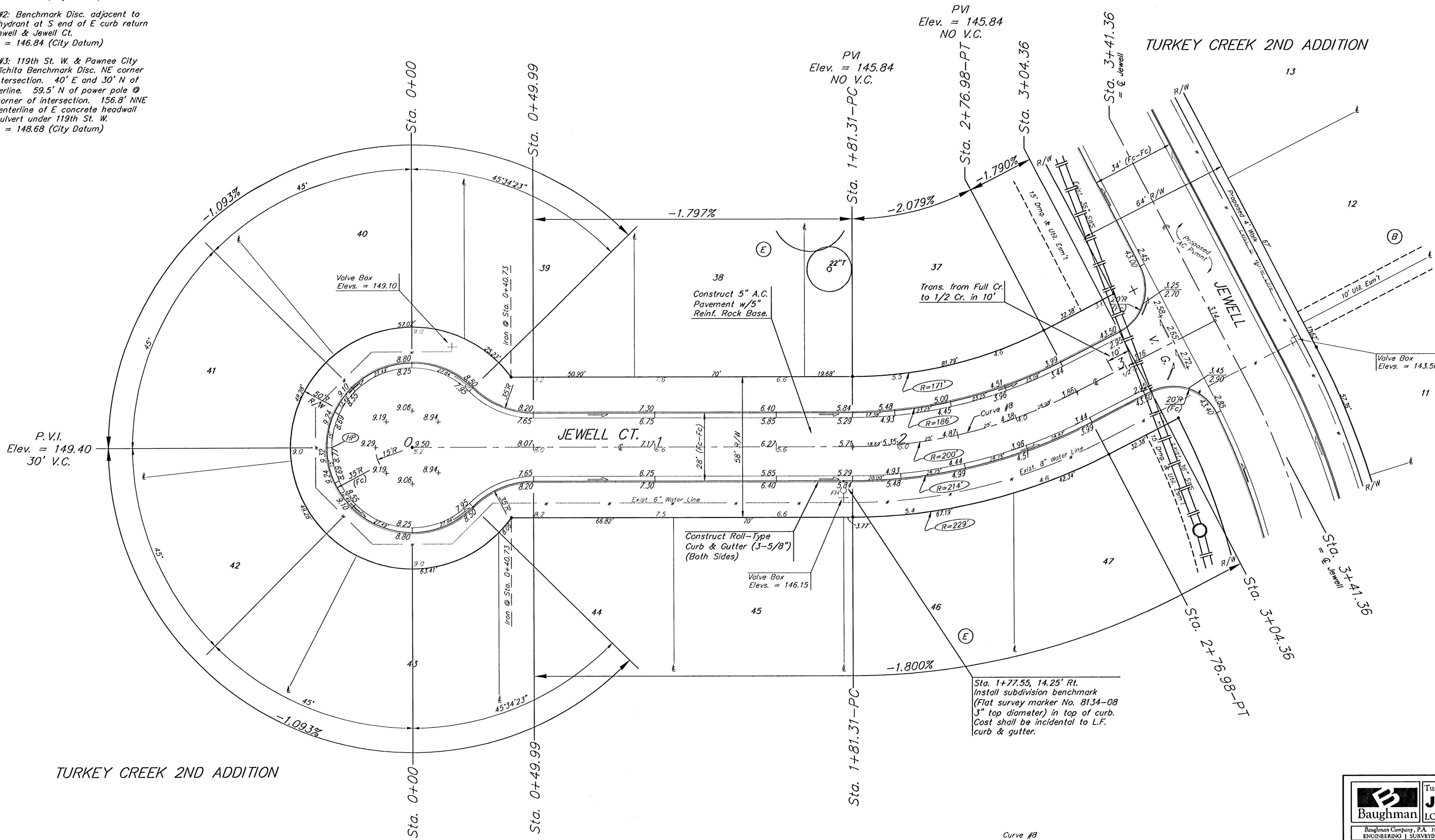
Benchmarks:
 BM #1: City of Wichita Benchmark
 Disc. 119th St. West & 0.5 miles S of
 Kellogg. 42.2' E of centerline & 6.4' S
 of Power Pole.
 Elev. = 144.69 (City Datum)

BM #2: Benchmark Disc. adjacent to
 fire hydrant at S end of E curb return
 of Jewell & Jewell Ct.
 Elev. = 146.84 (City Datum)

BM #3: 119th St. W. & Pawnee City
 of Wichita Benchmark Disc. NE corner
 of intersection. 40' E and 30' N of
 centerline. 59.5' N of power pole @
 SE corner of intersection. 156.8' NNE
 of centerline of E concrete headwall
 on culvert under 119th St. W.
 Elev. = 148.68 (City Datum)



Scale: 1" = 20'
 • = Iron



Curve #8
 Curve Data Based on Centerline
 Rad. = 200' Delta = 27° 24' 22" Tangent = 48.77'
 Arc = 95.67' L.C. = 94.76' Del/Ft. = 8.59395 Min.

Station	Arc	FACE CHORD LENGTHS		Defl.	T. Defl.
		8' Lt.	8' Rt.		
1+81.31	-	-	-	0°00'00"	0°00'00"
2+00.00	18.69'	16.63'	20.74'	2°40'37"	2°40'37"
2+25.00	25.00'	22.23'	27.73'	3°34'51"	6°15'28"
2+50.00	25.00'	22.23'	27.73'	3°34'51"	9°50'19"
2+76.98	26.98'	23.99'	29.92'	3°51'52"	13°42'11"

Roll type curb & gutter to be constructed on the pavement on this sheet.
 Top of curb elevation are given for full height curb.

Turkey Creek 2nd Addition - Phase II
JEWELL CT
 LOTS 37-47, BLOCK E

Baughman
 ENGINEERING | SURVEYING | PLANNING | LANDSCAPE ARCHITECTURE

PROJECT NUMBER: 472-84029
 DESIGN: MWS/JAK
 DRAWN: JAK
 APPROVED: DATE 4/12/06

REVISIONS:

SCALE: Noted
 SHEET: **13 OF 41**

E:\Eng\Turkey Creek 2nd\Phase 2\Sub8 06-01-E482