

GENERAL NOTES

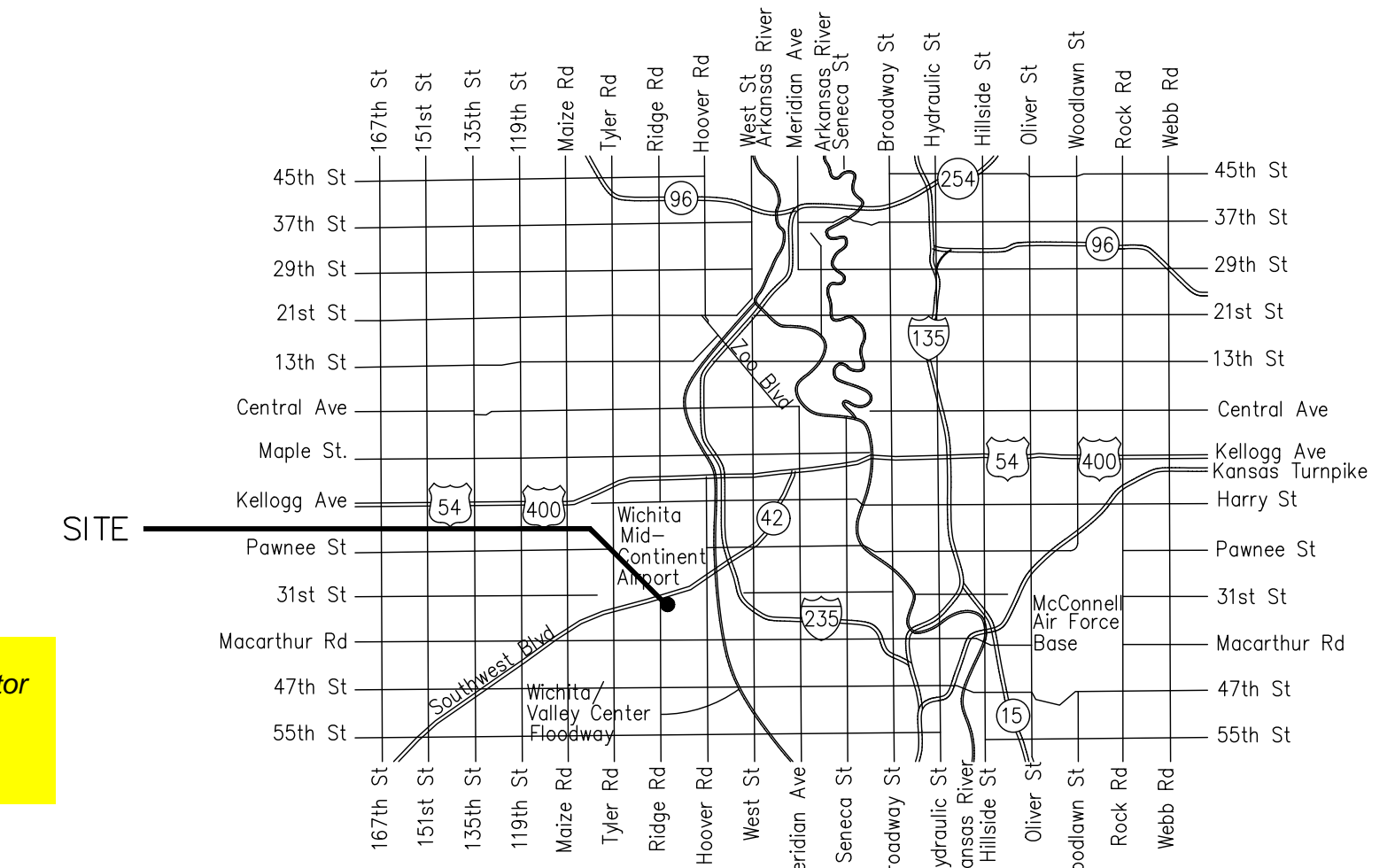
- THE CONTRACTOR SHALL COMPLY WITH ALL APPLICABLE SAFETY REGULATIONS. ALL CONSTRUCTION SHALL BE COMPLETED FOLLOWING CURRENT CITY STANDARD SPECIFICATIONS AND SPECIAL PROVISIONS.
- CONTRACTOR WILL BE REQUIRED TO PROVIDE NOTICE TO UTILITY COMPANIES A MINIMUM OF SEVENTY-TWO (72) HOURS PRIOR TO ANY EXCAVATION, AS FOLLOWS:
KANSAS ONE-CALL 687-2470
THE CONTRACTOR MUST NOTIFY THE FOLLOWING IN CASE OF AN EMERGENCY:
TEXTRON AVIATION
EAST CAMPUS EMERGENCY 1-316-515-6911
EAST CAMPUS NON-EMERGENCY (SECURITY DISPATCH) 1-316-515-5300
AT&T 1-800-246-8464
BLACK HILLS ENERGY 1-800-694-8989
CITY OF WICHITA WATER & SEWER 1-316-219-8921
CITY OF WICHITA STORMWATER 1-316-268-4090
CITY OF WICHITA TRAFFIC 1-316-268-4034
COX COMMUNICATIONS 1-888-249-3530
KANSAS GAS SERVICE 1-888-482-4950
EVERGY 1-800-544-4857
- UTILITY SERVICE LINES, POLES, ETC. ARE TO BE ADJUSTED AS NECESSARY BY OTHERS PRIOR TO CONSTRUCTION UNLESS THE PLANS SPECIFICALLY CALL FOR THEIR ADJUSTMENT BY THE CONTRACTOR OR UNLESS THE PLANS SPECIFICALLY IDENTIFY A UTILITY TO BE ADJUSTED BY ITS OWNER DURING CONSTRUCTION. EXISTING UTILITIES AND THEIR LOCATION, AS SHOWN ON THE PLANS, REPRESENT THE BEST INFORMATION OBTAINABLE FOR DESIGN. THE CONTRACTOR WILL BE REQUIRED TO WORK AROUND EXISTING UTILITIES WITHIN THE RIGHT-OF-WAY WHICH DO NOT CONFLICT WITH PROPOSED CONSTRUCTION.
- RUBBLE FROM THE REMOVAL OF MISCELLANEOUS STRUCTURES AND EXCESS EXCAVATION WHICH IS TO BE WASTED SHALL BE DISPOSED OF ON SITES TO BE PROVIDED BY THE CONTRACTOR. THESE SITES SHALL BE APPROVED BY THE ENGINEER AS TO SUITABILITY, APPEARANCE AND SITE LOCATION. LOCATIONS, IN THE OPINION OF THE ENGINEER, THAT WILL LEAVE AN UNSIGHTLY APPEARANCE WILL NOT BE APPROVED. ALL DISPOSAL SITES MUST BE APPROVED BY THE KANSAS DEPARTMENT OF HEALTH AND ENVIRONMENT. MATERIAL EITHER STOCKPILED OR DISPOSED OF IN A FLOOD PLAIN WILL REQUIRE A KANSAS STATE BOARD OF AGRICULTURE PERMIT. ANY MATERIAL DUMPED IN WATERS OF THE UNITED STATES OR WETLANDS IS SUBJECT TO U.S. CORPS. OF ENGINEERS PERMITTING REGULATIONS. ANY MATERIAL BURIED OR STOCKPILED BEYOND APPROVED CONSTRUCTION LIMITS WILL REQUIRE ADDITIONAL ARCHAEOLOGICAL INVESTIGATIONS UNLESS BURIED IN A PREVIOUSLY APPROVED BORROW LOCATION.
- TREES AND SHRUBS IN PUBLIC RIGHT-OF-WAY WHICH ARE IN DIRECT CONFLICT WITH PROPOSED NEW CONSTRUCTION SHALL BE REMOVED BY THE CONTRACTOR WITH THE CITY ENGINEER'S APPROVAL. TREES AND SHRUBS WHICH ARE NOT IN DIRECT CONFLICT WITH PROPOSED NEW CONSTRUCTION SHALL BE SAVED AND PROTECTED FROM DAMAGE.
- THE CONTRACTOR SHALL GIVE ALL PROPERTY OWNERS AND/OR TENANTS OF DEVELOPED PROPERTY ABUTTING THE CONSTRUCTION OF THIS PROJECT A MINIMUM OF TEN (10) DAYS NOTICE PRIOR TO START OF CONSTRUCTION.
- THE CONTRACTOR SHALL BE RESPONSIBLE FOR PRESERVING PROPERTY IRONS. THE CONTRACTOR WILL BE REQUIRED TO RE-ESTABLISH ANY PROPERTY IRONS WHICH ARE DAMAGED OR DESTROYED BY HIS CONSTRUCTION OPERATIONS. SUCH IRONS SHALL BE RE-ESTABLISHED BY A LICENSED LAND SURVEYOR IN ACCORDANCE WITH STATE LAWS.
- THE ENGINEERING DIVISION SHALL FIELD LOCATE WATER VALVES ONE TIME DURING CONSTRUCTION WHEN REQUESTED BY THE CONTRACTOR. IT SHALL BE THE CONTRACTOR'S RESPONSIBILITY TO PRESERVE SUCH FIELD LOCATIONS DURING THE CONSTRUCTION PROCESS. WATER VALVES, VALVE BOXES OR FIRE HYDRANTS DAMAGED DURING CONSTRUCTION SHALL BE REPAIRED BY CONTRACTOR AT HIS OWN EXPENSE. VALVE BOXES AND WATER METERS WITHIN THE PROJECT LIMITS SHALL BE ADJUSTED TO MATCH FINAL GRADES BY THE CONTRACTOR.
- THE CONTRACTOR SHALL NOTIFY THE INSPECTING ENGINEER AND DAWNITA REINHARDT AT 316-650-0740 WITH THE CITY OF WICHITA WITH THE ANTICIPATED CONSTRUCTION START DATE AND NOTIFY THEM OF PROJECT COMPLETION. STAKING AND INSPECTION FOR THIS PROJECT WILL BE THE RESPONSIBILITY OF THE CONTRACTOR.
- IF TRAFFIC WILL BE IMPACTED BY CONSTRUCTION, A TRAFFIC CONTROL PLAN MUST BE SUBMITTED AND APPROVED BY THE CITY TRAFFIC ENGINEER, MIKE ARMOUR AT TRAFFIC@WICHITA.GOV BEFORE CONSTRUCTION CAN BEGIN. THE CONTRACTOR SHALL BE RESPONSIBLE FOR ALL TRAFFIC CONTROL MEASURES TO FACILITATE CONSTRUCTION. ALL CONSTRUCTION ZONE MARKINGS AND SIGNAGE SHALL CONFORM TO THE LATEST VERSION OF THE MANUAL ON UNIFORM TRAFFIC CONTROL DEVICES (MUTCD) AS PUBLISHED BY THE US DEPT. OF TRANSPORTATION, FEDERAL HIGHWAY ADMINISTRATION. ALL COSTS ASSOCIATED WITH CONSTRUCTION MARKINGS AND SIGNAGE SHALL BE THE CONTRACTOR'S RESPONSIBILITY.
- ALL ELEVATIONS SHOWN ARE NAVD 88.
- ALL AREAS DISTURBED DURING CONSTRUCTION THAT WILL NOT BE UNDER PROPOSED PAVEMENT SHALL BE RESTORED TO MATCH EXISTING CONDITIONS.
- ANY SIDEWALK, DRIVE APPROACH, CURB, OR STREET PAVEMENT REMOVED TO CONSTRUCT PROJECT MUST HAVE A PAVEMENT CUT PERMIT AND BE REPLACED BY THE CITY CONTRACTOR. PERMITS CAN BE OBTAINED BY CALLING 316-268-4501 OR 316-268-4480.
- ALL APPLICABLE FEES (TAP, EQUITY, IN LIEU OF & MAIN BENEFIT) MUST BE PAID BEFORE ANY CONNECTIONS CAN BE MADE ON THIS PROJECT. QUOTES CAN BE OBTAINED ON FEES BY CALLING 316-268-4555.
- CITY MAINTENANCE OF SANITARY SEWER MAINS ENDS AT LAST STRUCTURE WITHIN THE EASEMENT OR RIGHT-OF-WAY.
- ALL STUBS AND CAPPED PIPES SHALL BE LOCATED WITH GREEN PLASTIC TAPE IN THE SAME MANNER AS RISERS.
- CONNECTING TO EXISTING MANHOLES: PRIOR TO LAYING SEWER LINES USING EXISTING STUBS IN EXISTING MANHOLES, THE CONTRACTOR SHALL EXPOSE AND VERIFY THE ELEVATION, GRADE AND ALIGNMENT OF EXISTING STUBS AND NOTIFY THE ENGINEER OF ANY DEVIATION FROM THE PLANS. WHERE THE STUB IS UNUSABLE DUE TO ELEVATION GRADE OR ALIGNMENT, THE CONTRACTOR SHALL REMOVE THE STUB AND PLUG THE HOLE, AND RESHAPE THE EXISTING MANHOLE INVERT TO PROVIDE SMOOTH FLOW. WHERE CONNECTING TO AN EXISTING MANHOLE THAT DOES NOT HAVE AN EXISTING STUB, THE CONTRACTOR SHALL CORE CUT INTO EXISTING MANHOLE WALL TO MAKE CONNECTION USING APPROVED WATER STOP GASKET, AND RESHAPE THE EXISTING MANHOLE INVERT TO PROVIDE SMOOTH FLOW. THE COST TO CONNECTING TO EXISTING MANHOLES IS INCIDENTAL TO THE PROJECT.
- CONTRACTOR SHALL LIMIT THE EXTENT OF TRENCH OPEN OVERNIGHT AND WEEKENDS TO LESS THAN 50 FEET.
- CONTRACTOR SHALL PROVIDE POSITIVE DRAINAGE AWAY FROM ALL MANHOLE COVERS.
- THE CONTRACTOR SHALL PREVENT ANY CONSTRUCTION DEBRIS FROM ENTERING THE EXISTING SANITARY SEWER DURING CONSTRUCTION.
- THE CONTRACTOR SHALL BE RESPONSIBLE FOR MAINTAINING CONTINUOUS FLOW OF SEWAGE THROUGH CONSTRUCTION. CONTRACTORS PROPOSED METHOD FOR MAINTAINING SEWAGE FLOW SHALL BE SUBMITTED AND APPROVED BY THE SEWER MAINTENANCE DIVISION (316-268-4073) PRIOR TO STARTING AND BY-PASSING OF SEWAGE FLOWS.
- ANY OVER EXCAVATION FROM MANHOLE AND PIPE REMOVAL SHALL BE BACKFILLED WITH AB-3 COMPACTED TO 90-95% ASTM D698.
- THE CONTRACTOR SHALL PROTECT FROM DAMAGE AND SUPPORT EXISTING UTILITIES THROUGH CONSTRUCTION AS APPROVED BY THE UTILITY OWNER AND THE ENGINEER AT THE CONTRACTORS EXPENSE.
- THE CONTRACTOR SHALL INSTALL AND/OR MAINTAIN EROSION CONTROL METHODS AS SPECIFIED. THE GENERAL LOCATION OF THE REQUIRED EROSION CONTROL IS ILLUSTRATED ON THE EROSION CONTROL PLAN. THE CONTRACTOR SHALL BE RESPONSIBLE FOR MAINTAINING THE EROSION CONTROL SHOWN THROUGH THE COMPLETION OF THIS PROJECT. INSTALLATION OF THESE BMP'S DOES NOT RELIEVE THE CONTRACTOR OF THE RESPONSIBILITY OF ABATING SOIL EROSION.

SANITARY SEWER to serve TEXTRON AVIATION WEST CAMPUS P43 EXPANSION CITY OF WICHITA, KANSAS

Gary Janzen, P.E. City Engineer

Project Number
2022-034865 PPS (53030982)

D. Reinhardt - City of Wichita, Inspector
Release Date: 10/17/2023
: apr 10/23/2023



Vicinity Map

SHEET INDEX

SHEET NO. CU300	TITLE SHEET
SHEET NO. CU301	KEY MAP
SHEET NO. CU302	PLAN & PROFILE
SHEET NO. CU303	MANHOLE ADJUSTMENT DETAIL EROSION CONTROL BMP DETAILS (available on the City's website at https://www.wichita.gov/PWU/Pages/Regulations.aspx)

KEY MAP

SEE SHEET CU601

HORIZONTAL CONTROL

SEE SHEET CU601

BENCHMARKS

SEE SHEET CU601

AS BUILTS

Contractor: McCullough Excavation 1 June 23	Project Inspector: Eric Miner KE MILLER ENGINEERING PA 117 E. Lewis, Wichita, KS 67202 (316)264-0242
--	---

APPROVED AS NOTED
BY WICHITA PUBLIC WORKS
ENGINEERING DIVISION

Engineering **SHAWN MELLIES - DECEMBER 6, 2022**

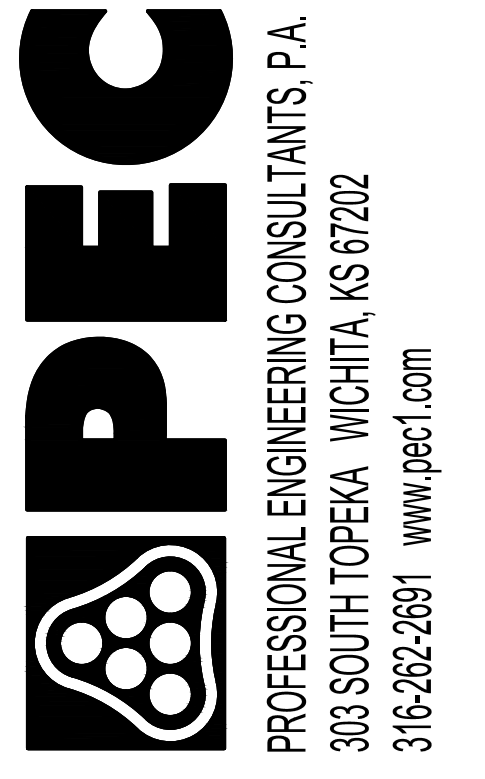
Utilities **DEB ARY - DECEMBER 6, 2022**

NOTE TO CONTRACTORS

Inspection and testing for this project is to be provided by a Licensed Consulting Engineering Firm under contract with the Owner/Developer. Said inspection to be in accordance with the City of Wichita standard construction engineering practices and certified by a Licensed Professional Engineer in the state of Kansas. No work shall be performed by the Contractor without such inspection nor shall any work be commenced without written authorization by City Engineering. All Construction and Materials shall comply with the current City of Wichita Specifications and Standards and Special Provisions. (on file and available at Wichita.gov).

An approved copy of these plans signed by City staff are required on-site.

NOVEMBER 2022



Date	Description
01/06/2023	REVISION 3

WEST CAMPUS - P43 - EXPANSION
7121 W. SOUTHWEST BLVD,
WICHITA, KS

JOB NUMBER:	228003-022
DATE:	01/06/2023
DRAWN:	SAW
CHECKED:	JAG

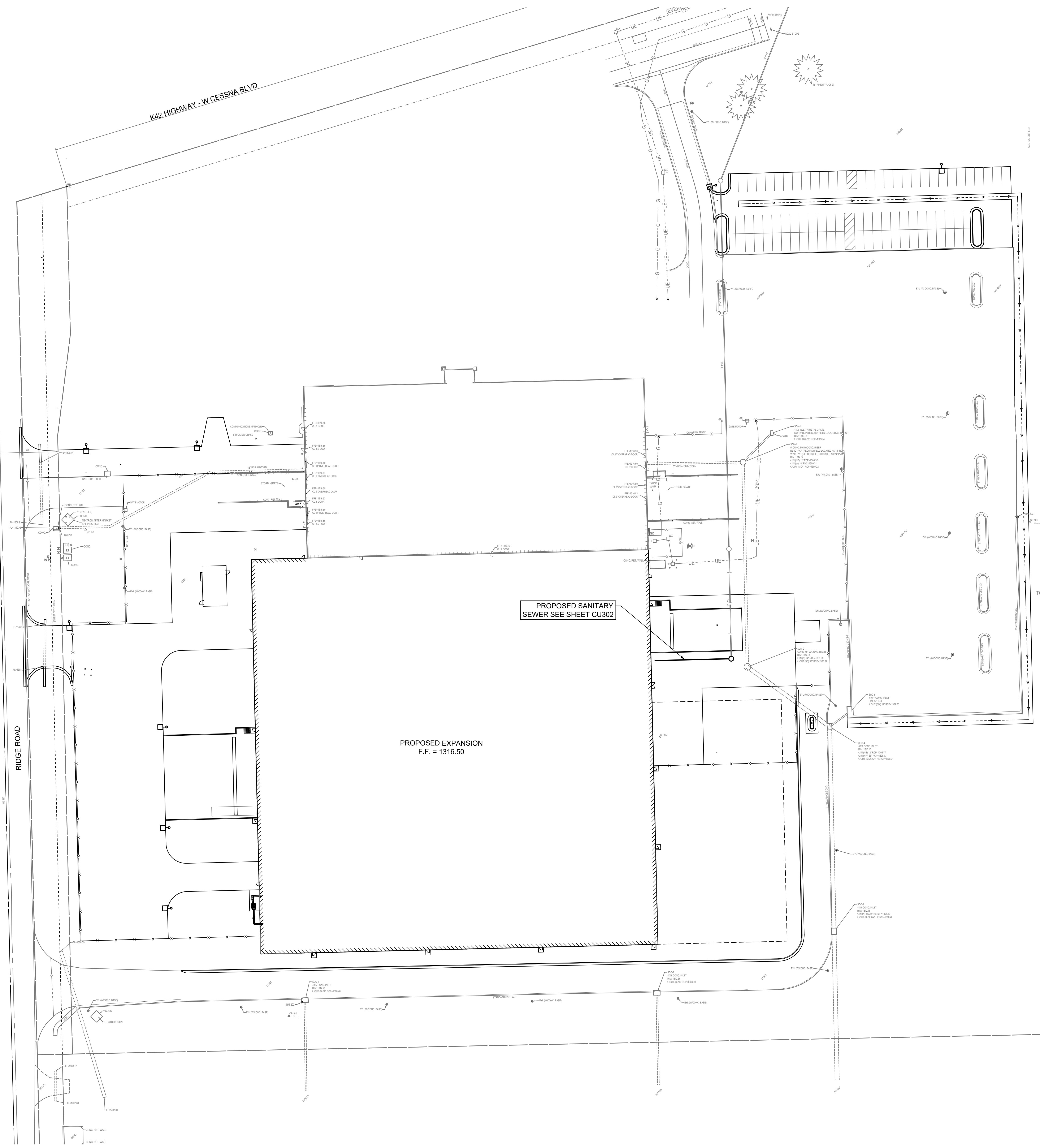
CONSTRUCTION DOCUMENTS

PPS COVER SHEET

CU300

WEST CAMPUS - P43

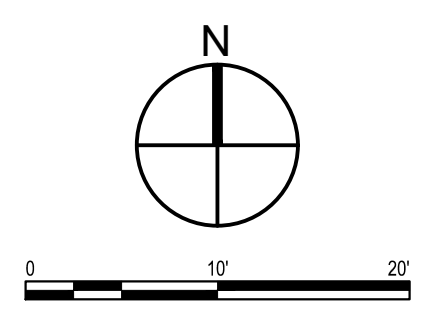
SAVED 12/22/2022 2:42:01 PM BY SAMANTHA WARKINS
 PLOTTED 1/15/2023 4:48:49 PM BY CHANCE SWANEY
 U:\WICHITA-FACIL\2022\228003\02\DRAWINGS\228003-02-CU301-PPS KEY MAP.DWG



MABCD REVIEWER:
 MABCD REVIEWER:

LEGEND

- PROPOSED SANITARY SEWER
- PROPOSED MANHOLE



CONTROL SUMMARY
 HORIZONTAL DATUM/COORDINATE SYSTEM: NAD 83
 PROJECT COORDINATE SYSTEM: (GRID) ON DESCRIBED COORDINATE SYSTEM
 VERTICAL DATUM: NAVD 88
 SCALE POINT: NORTHING: 0
 EASTING: 0
 COMBINED ADJUSTMENT FACTOR (CAF): GROUND TO GRID=0.99988363
 GRID TO GROUND=1/0.99988363
 DISTANCE UNITS: US SURVEY FEET

- BENCH MARKS**
- BM-201 (NOT SHOWN)
 ELEV: 1,370.89 (NAVD 88)
 CHISELED SQUARE ON SE CORNER OF ELEVATED CONCRETE VAULT, LOCATED ON THE WEST SIDE OF GREENWICH ROAD JUST SOUTH OF THE SOUTH MOST ENTRANCE TO TETTRON PARKING LOT
 - BM-202 (NOT SHOWN)
 ELEV: 1,361.42 (NAVD 88)
 CHISELED SQUARE ON CENTER OF HEADWALL, LOCATED IN THE GRASS WEST OF SKYWARD CREDIT UNION JUST NORTH OF CONCRETE FLUME TO POND
 - BM-203 (NOT SHOWN)
 ELEV: 1,355.20 (NAVD 88)
 CHISELED SQUARE ON SOUTH END OF RETAINING WALL, LOCATED AT SE CORNER OF BUILDING B89 ON EAST SIDE OF TETTRON CAMPUS.
 - BM-204 (NOT SHOWN)
 ELEV: 1,355.47 (NAVD 88)
 CHISELED SQUARE ON NORTH SIDE OF ROUND CONCRETE MANHOLE PAD, LOCATED ON THE WEST SIDE OF N-S ROAD, SW OF BUILDING B89.

- HORIZONTAL CONTROL POINTS**
- CP-101 (NOT SHOWN)
 N: 1,685,570.0952 E: 1,686,194.8012
 1/2" BAR WITH PEC CAP
 1. 8.1' W TO NE CORNER OF CONCRETE VAULT
 2. 32.5' N TO CENTER OF ENTRANCE DRIVE
 3. 15.4' E TO BACK OF CURB
 - CP-102 (NOT SHOWN)
 N: 1,685,103.6324 E: 1,685,960.9742
 1/2" BAR WITH PEC CAP
 1. 42' S TO CENTERLINE OF E-W ROAD
 2. 54' E TO CENTERLINE OF WEST DRIVE ENTRANCE TO BANK
 3. 33.3' SE TO END OF BACK OF CURB
 - CP-103 (NOT SHOWN)
 N: 1,685,038.0361 E: 1,685,576.2895
 1/2" BAR WITH PEC CAP
 1. 13.2' N TO SOUTH EDGE OF ROAD
 2. 60' S TO TOP CENTER OF MANHOLE
 3. 26.5' N TO CENTERLINE OF E-W ROAD
 - CP-104 (NOT SHOWN)
 N: 1,684,591.8189 E: 1,685,573.5064
 MAG NAIL
 1. IN JOINT WHERE ASPHALT MEETS CONCRETE
 2. 23.5' NE TO SOUTH GATE POST
 3. 27' SE TO FENCE CORNER POST
 4. 15' S TO CORNER OF CONCRETE
 - CP-105 (NOT SHOWN)
 N: 1,684,684.9974 E: 1,684,796.1472
 1/2" BAR WITH PEC CAP
 1. 14' E TO WEST EDGE OF ASPHALT ROAD
 2. 133' S TO TOP CENTER OF MANHOLE LID
 3. INLINE WITH SOUTH EDGE OF BUILDING TO EAST



Date	Description
3 01/06/2023	REVISION 3

CITY OF WICHITA PROJECT NUMBER
 2022-034865 PPS (53030982)

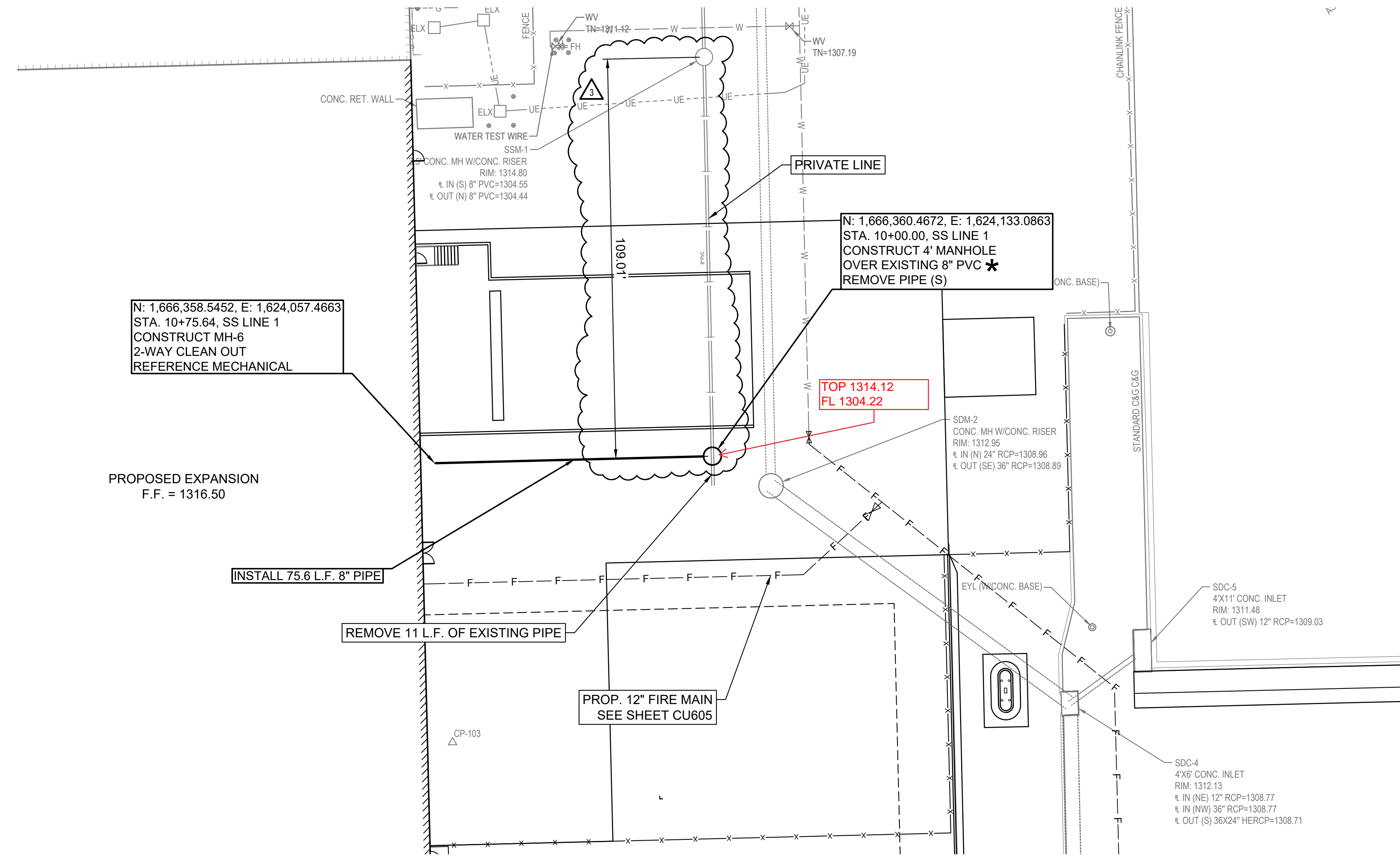
WEST CAMPUS - P43 - EXPANSION
 7121 W. SOUTHWEST BLVD,
 WICHITA, KS

JOB NUMBER: 228003-022
 DATE: 01/06/2023
 DRAWN: SAW
 CHECKED: JAG

CONSTRUCTION DOCUMENTS

PPS KEY MAP

SAVED 1/5/2023 3:09:45 PM BY CHANCE SWANEY
 PLOTTED 1/5/2023 4:49:02 PM BY CHANCE SWANEY
 U:\WICHITA-FACIL\2022\228003\02\WIND\DRAWINGS\228003-02-CU302.DWG



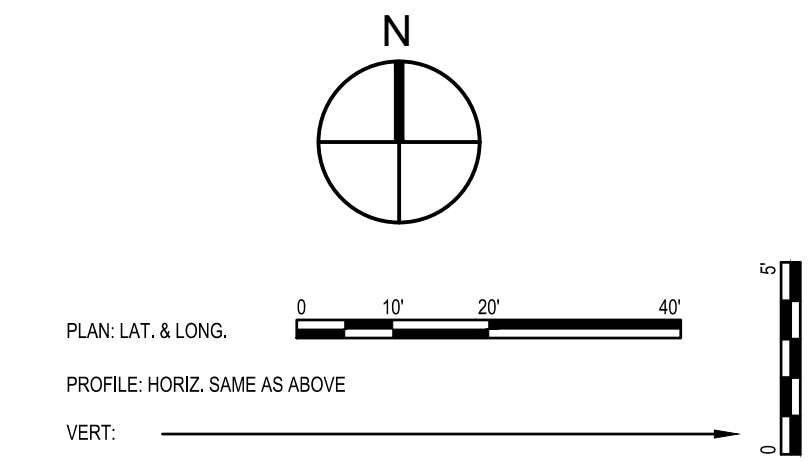
AS BUILTS

KEMILLER
ENGINEERING PA

117 E. Lewis,
Wichita, KS 67202 (316)264-0242

MABCD REVIEWER:

MABCD REVIEWER:



* PRIOR TO BEGINNING CONSTRUCTION, THE CONTRACTOR SHALL VERIFY THE VERTICAL EXISTING PIPE FLOWLINE. THE PIPE FLOWLINE SHALL BE REPORTED TO THE ENGINEER SO THAT ANY NECESSARY PLAN MODIFICATIONS CAN BE MADE. ANY ADDITIONAL LABOR OR MATERIALS NECESSARY TO COMPLETE THE CONNECTION SHALL BE CONSIDERED SUBSIDIARY TO THE PROJECT.

N: 1,666,358.5452, E: 1,624,057.4663
 STA. 10+75.64, SS LINE 1
 CONSTRUCT MH-6
 2-WAY CLEAN OUT
 REFERENCE MECHANICAL

N: 1,666,360.4672, E: 1,624,133.0863
 STA. 10+00.00, SS LINE 1
 CONSTRUCT 4' MANHOLE
 OVER EXISTING 8" PVC
 REMOVE PIPE (S)

TOP 1314.12
 FL 1304.22

PROPOSED EXPANSION
 F.F. = 1316.50

INSTALL 75.6 L.F. 8" PIPE

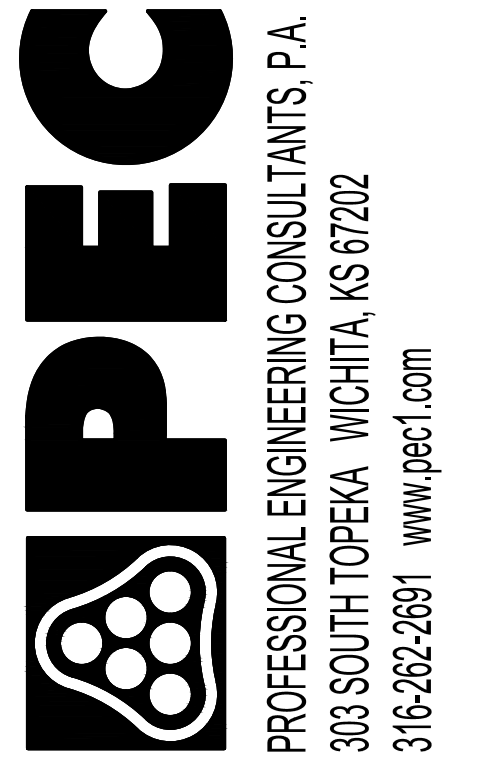
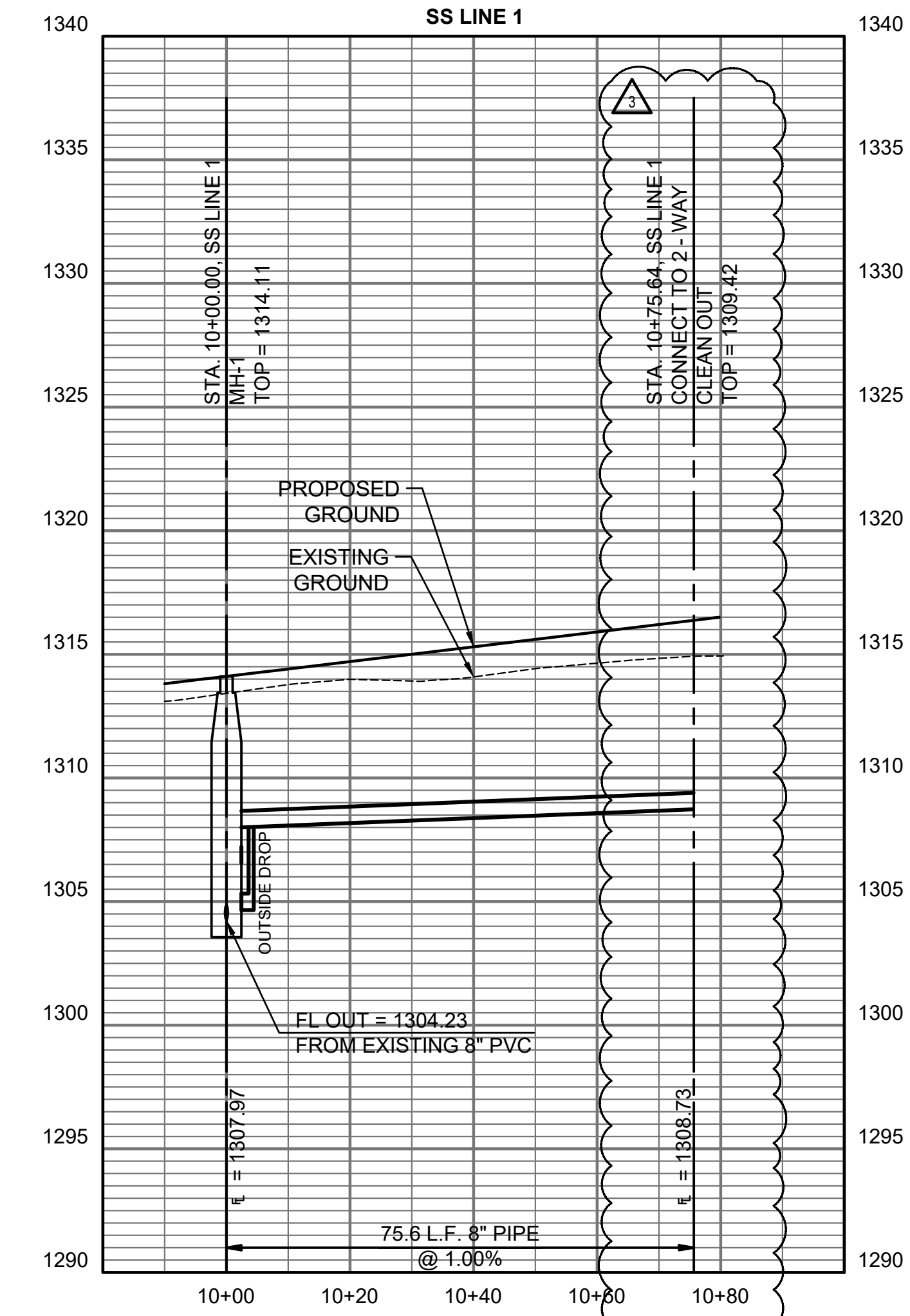
REMOVE 11 L.F. OF EXISTING PIPE

PROP. 12" FIRE MAIN
 SEE SHEET CU605

SDM-2
 CONC. MH W/CONC. RISER
 RIM: 1312.55
 4" IN (N) 24" RCP=1308.96
 4" OUT (SE) 36" RCP=1308.89

SDC-5
 4X11" CONC. INLET
 RIM: 1311.48
 4" OUT (SW) 12" RCP=1309.03

SDC-4
 4X6" CONC. INLET
 RIM: 1312.13
 4" IN (NE) 12" RCP=1308.77
 4" IN (NW) 36" RCP=1308.77
 4" OUT (S) 36X24" HERCP=1308.71



Δ	Date	Description
3	01/06/2023	REVISION 3

CITY OF WICHITA PROJECT NUMBER
 2022-034865 PPS (53030982)

WEST CAMPUS - P43 - EXPANSION
 7121 W. SOUTHWEST BLVD,
 WICHITA, KS

JOB NUMBER:	228003-022
DATE:	01/06/2023
DRAWN:	SAW
CHECKED:	JAG

CONSTRUCTION DOCUMENTS

PLAN & PROFILE

CU302
 WEST CAMPUS - P43