

| | | |
|------|---------|------|
| PLAN | CHECKED | DATE |
| | CHECKED | |

| | | |
|---------|---------|------|
| PROFILE | CHECKED | DATE |
| | CHECKED | |

DSR: MDK OPER. ILL. SCALE: 1"=40.00
 C:\2004\04485\002\SSP10 11-15-2005 01:19:45 pm

N-26,624.5695, E-17,326.4520
 Sta. 0+00.0
 Core existing concrete MH wall and install outside drop connection (utilize existing 8" stub to west for bottom connection.) Seal new 8" Pipe to MH with an approved waterstop gasket and non-shrink grout. Construct a minimum of 3" Reinforced Concrete Encasement from MH wall. Repair Interior Linings/Coatings as necessary. This work shall be considered subsidiary to the price bid for pipe in place.

CAUTION !!!
 Proposed 3-36" RCP Storm Sewer (by others)

N-26,613.6063, E-17,082.9967
 Sta. 2+43.7
 Const. MH 22
 Outside Drop MH

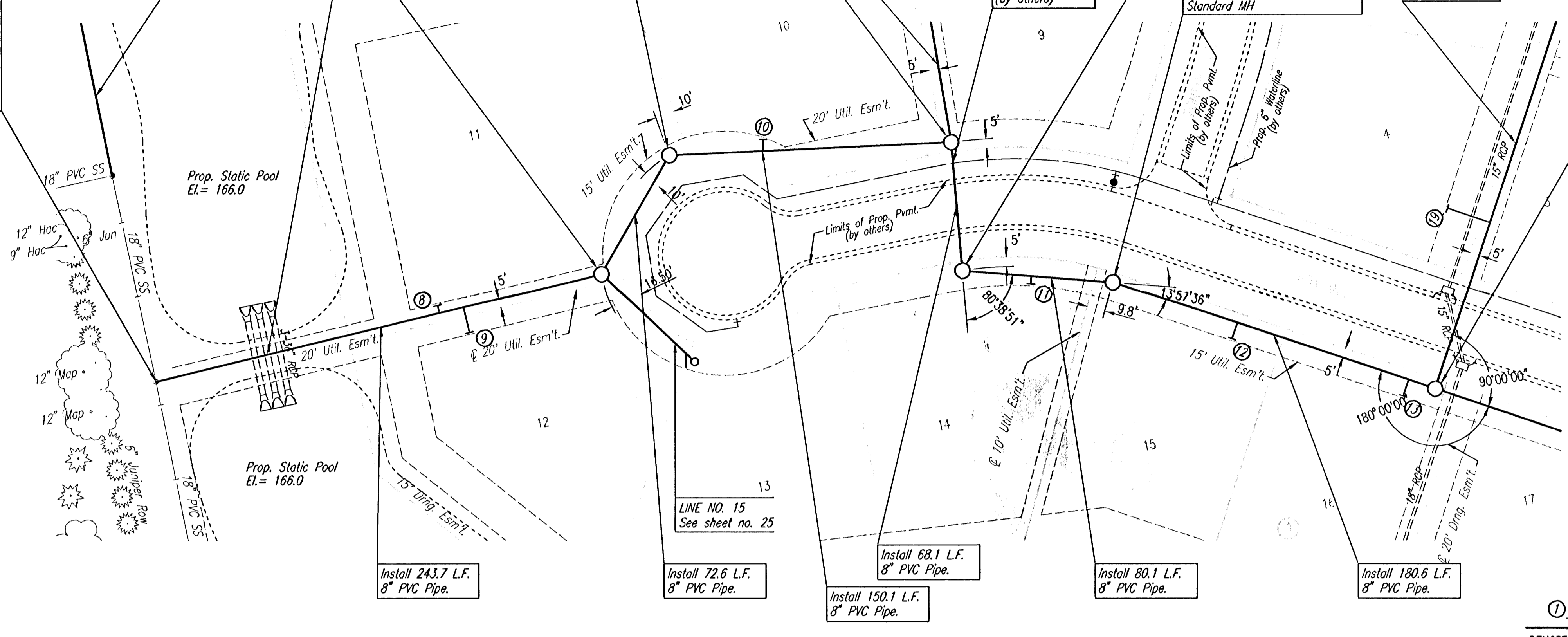
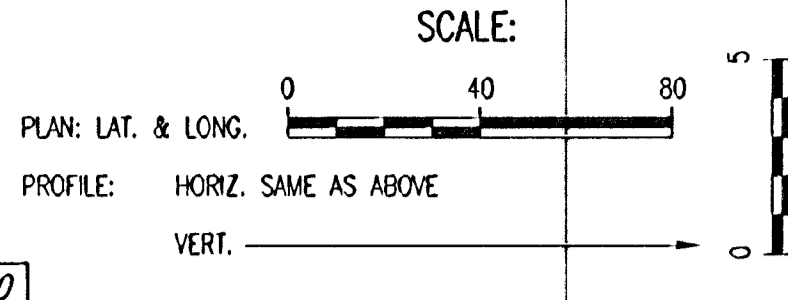
N-26,558.6864, E-17,035.4685
 Sta. 3+16.3
 Const. MH 23
 Standard MH

N-26,580.7113, E-16,887.0756
 Sta. 4+66.4
 Const. MH 24
 Outside Drop MH

N-26,648.4832, E-16,894.3032
 Sta. 5+34.5
 Const. MH 25
 Standard MH

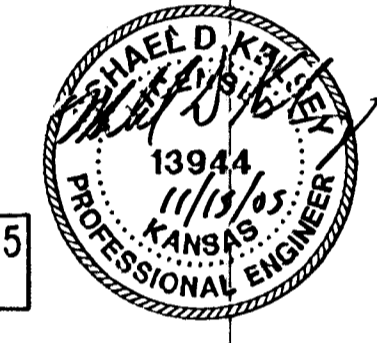
N-26,669.8059, E-16,817.1010
 Sta. 6+14.6
 Const. MH 26
 Standard MH

N-26,758.4397, E-16,659.7990
 Sta. 7+95.2
 Const. MH 27
 Outside Drop MH

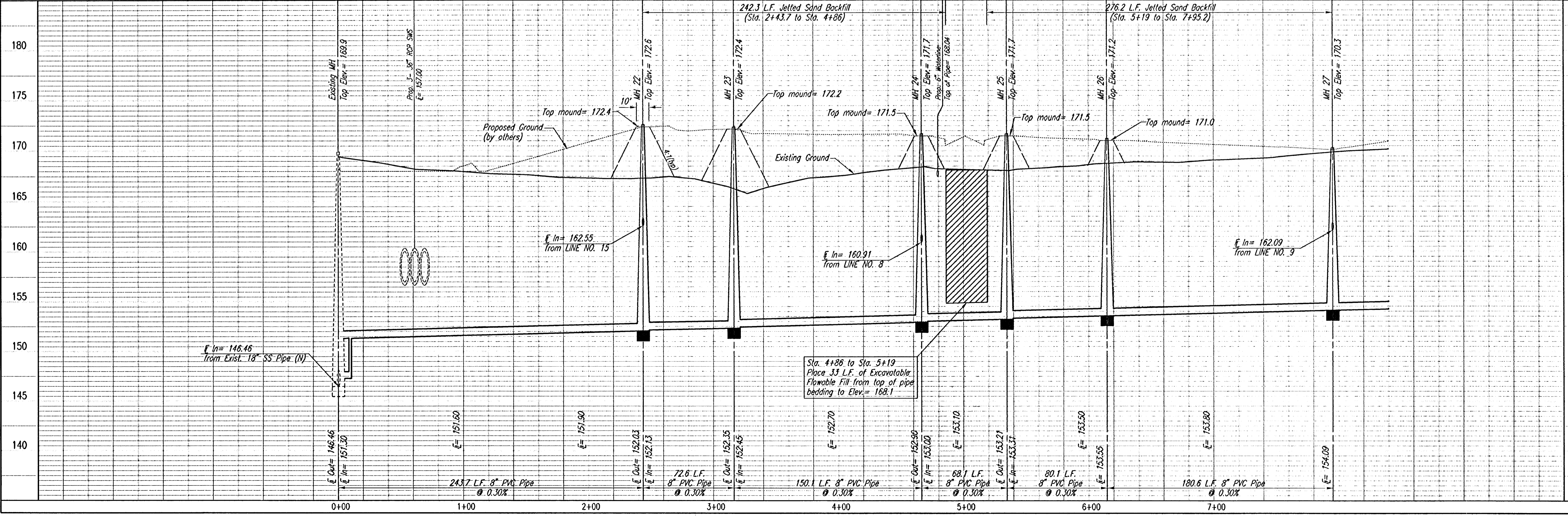


① ②
 DENOTES SEWER SERVICE. SEE SHEET NO. 29 FOR SEWER SERVICE SCHEDULE AND DETAILS

SEE SHEETS NO. 3, 4 & 5 FOR PLAT COORDINATES



SANITARY SEWER LINE NO. 7



LATERAL 5, MAIN 7
 OF THE NORTHWEST INTERCEPTOR SEWER
 SANITARY SEWER LINE NO. 7
 JAMES L. ARMOUR, P.E. - ACTING CITY ENGINEER
 CITY OF WICHITA PROJECT NO. 485-3877

Professional Engineering Consultants, P.A.
 303 S. TORREKA - WICHITA, KANSAS 67202
 316-262-2691 • FAX 316-262-8003

Designed By: MDK
 Drawn By: TLB
 Job No.: 35-04485-002
 Date: September 2004