

**SANITARY SEWER PLANS FOR
HAWTHORNE THIRD ADD.
PHASE 4**

BUBBLE MAP
SHEET TITLE
468-83874
PROJECT NUMBER

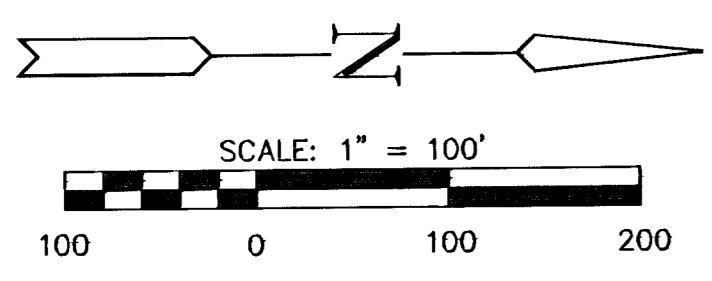
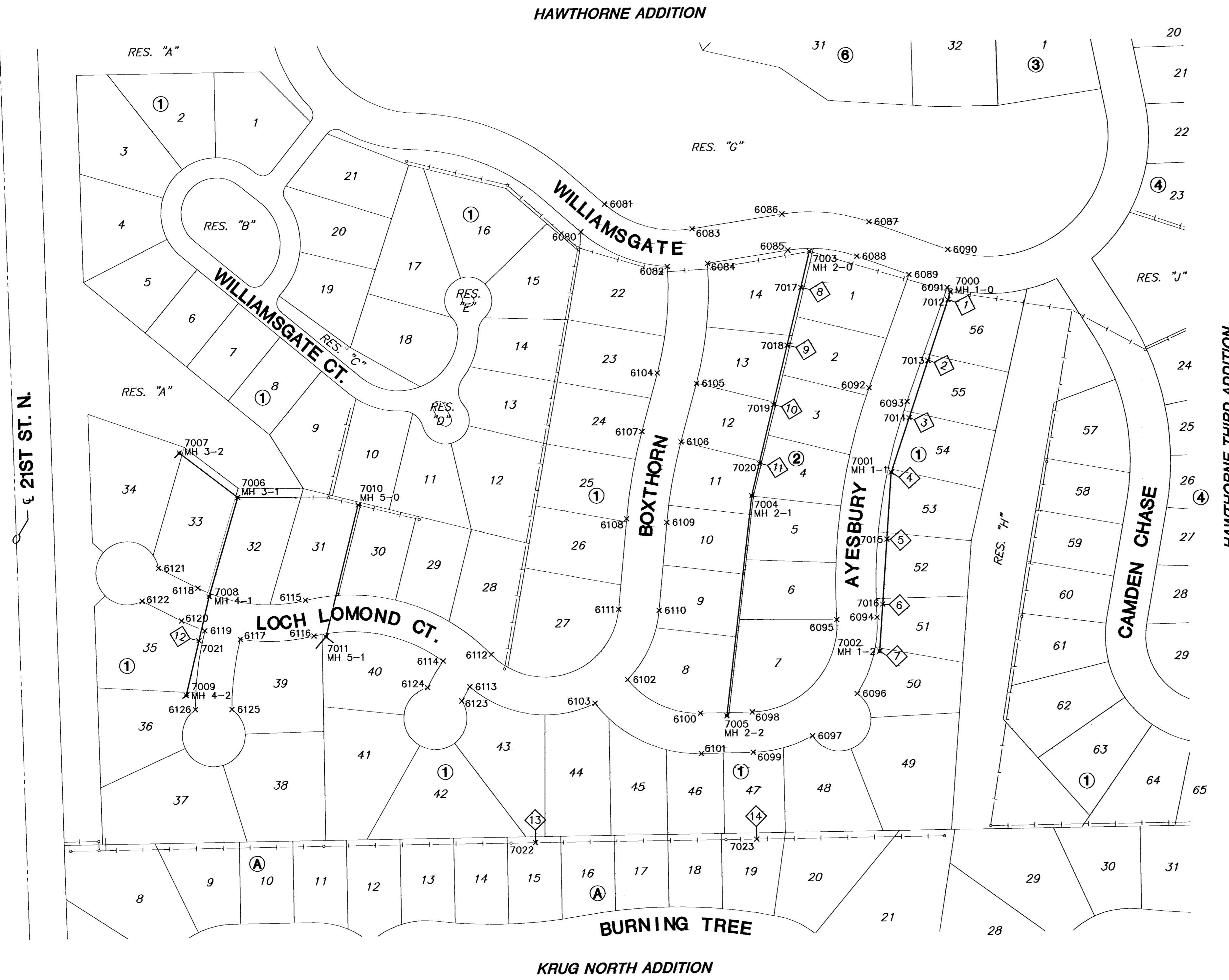
DESIGN BY DFL
DRAWN BY DMU
CHECKED BY GJA

ISSUED JUNE 2006
REVISED

SHEET NO.
9 of 10

Plat Points			
Point No.	Northing	Easting	Description
6080	1700837.559	1693851.693	PI
6081	1700875.688	1693807.988	PI
6082	1700974.309	1693907.716	PI
6083	1701014.273	1693848.118	PI
6084	1701038.146	1693903.112	PI
6085	1701165.972	1693883.316	PI
6086	1701157.096	1693825.999	PI
6087	1701294.876	1693839.414	PI
6088	1701275.110	1693893.942	PI
6089	1701357.576	1693923.836	PI
6090	1701419.408	1693884.557	PI
6091	1701417.915	1693945.178	PI
6092	1701292.684	1694102.850	PI
6093	1701352.853	1694124.661	PI
6094	1701302.120	1694466.629	PI
6095	1701238.211	1694470.033	PI
6096	1701269.704	1694587.564	PI
6097	1701198.140	1694654.154	PI
6098	1701102.853	1694615.350	PI
6099	1701103.988	1694679.339	PI
6100	1701020.483	1694618.810	PI
6101	1701021.618	1694680.800	PI
6102	1700905.670	1694562.393	PI
6103	1700853.590	1694599.873	PI
6104	1700957.062	1694076.467	PI
6105	1701018.806	1694093.311	PI
6106	1700993.522	1694185.991	PI
6107	1700931.779	1694169.147	PI
6108	1700908.366	1694307.451	PI
6109	1700970.064	1694313.656	PI
6110	1700956.490	1694452.996	PI
6111	1700892.408	1694450.734	PI
6112	1700689.345	1694520.492	PI
6113	1700654.876	1694571.770	PI
6114	1700612.984	1694530.288	PI
6115	1700395.659	1694432.038	PI
6116	1700408.701	1694488.552	PI
6117	1700291.665	1694492.783	PI
6118	1700224.995	1694410.967	PI
6119	1700235.448	1694478.518	PI
6120	1700198.600	1694462.613	PI
6121	1700162.715	1694379.138	PI
6122	1700136.320	1694430.784	PI
6123	1700642.018	1694594.075	PI
6124	1700587.974	1694572.532	PI
6125	1700277.263	1694604.069	PI
6126	1700219.263	1694603.900	PI

Sanitary Sewer Points			
Point No.	Northing	Easting	Description
7000	1701422.813	1693952.076	MH 1-0
7001	1701326.619	1694237.115	MH 1-1
7002	1701305.813	1694520.290	MH 1-2
7003	1701199.849	1693885.547	MH 2-0
7004	1701104.891	1694272.543	MH 2-1
7005	1701062.521	1694821.068	MH 2-2
7006	1700289.353	1694287.949	MH 3-1
7007	1700197.387	1694196.577	MH 3-2
7008	1700242.703	1694424.573	MH 4-1
7009	1700204.931	1694581.088	MH 4-2
7010	1700480.497	1694281.721	MH 5-0
7011	1700427.590	1694490.009	MH 5-1
7012	1701418.682	1693964.317	RISER 1
7013	1701386.392	1694059.998	RISER 2
7014	1701355.811	1694150.616	RISER 3
7015	1701318.828	1694343.150	RISER 5
7016	1701311.274	1694445.973	RISER 6
7017	1701185.990	1693942.875	RISER 8
7018	1701163.148	1694034.276	RISER 9
7019	1701140.561	1694128.095	RISER 10
7020	1701117.554	1694220.974	RISER 11
7021	1700225.895	1694494.222	RISER 12
7022	1700757.055	1694819.604	RISER 13
7023	1701108.077	1694816.812	RISER 14



PLOTED: Wednesday, Jun 21, 2006 @ 07:58AM

H:\CIVIL\02167\DWG\Sewer\3rd Add\Ph4_02167.dwg