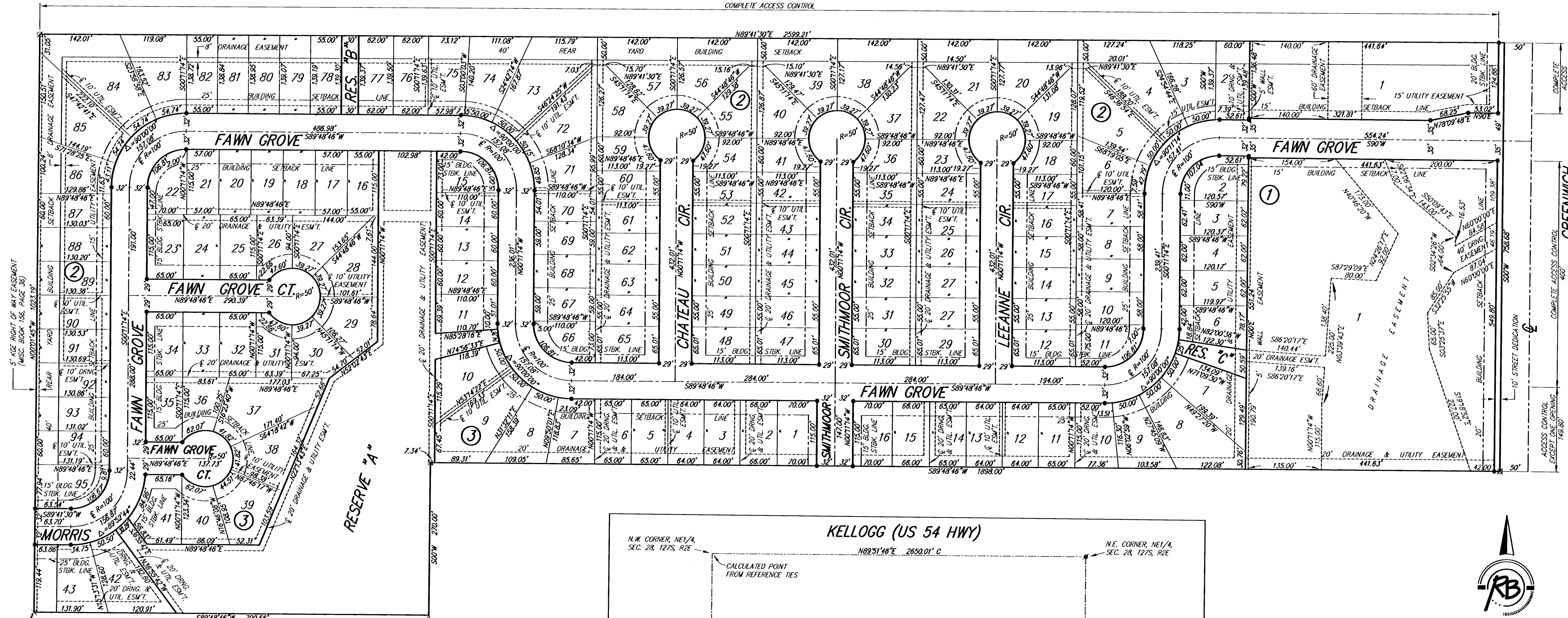


FAWN GROVE AT SUNSET LAKES

an Addition to Wichita, Sedgwick County, Kansas

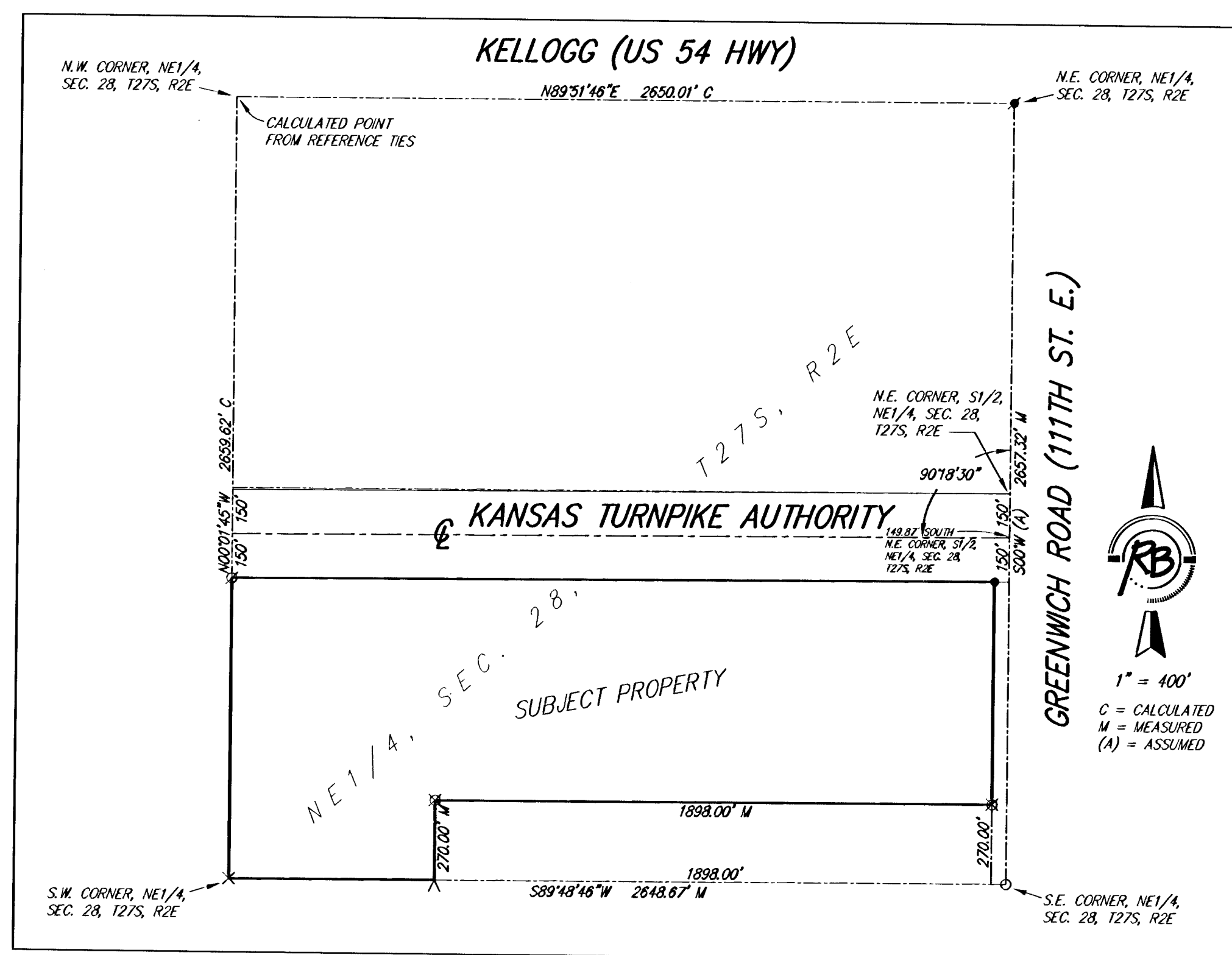
KANSAS TURNPIKE AUTHORITY
COMPLETE ACCESS CONTROL



S.W. CORNER, NE 1/4, SEC. 28, 127S, R2E

BLOCK	LOT NO.	ELEVATION (N.G.V.D.)
1	1, 2, 3, 4, 5, 6, 7, 8	1340.0
2	1, 2	1344.0
3	9, 10, 11, 12, 13, 14, 15, 16, 28, 29, 30, 31, 32, 33, 34, 40, 41, 42	1349.0

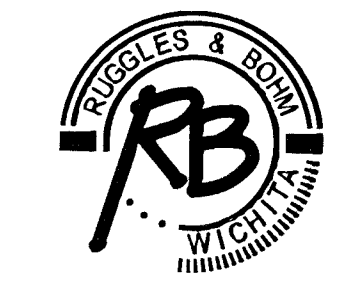
THIS PLAT OF FAWN GROVE AT SUNSET LAKES AN ADDITION TO WICHITA, SEDGWICK COUNTY, KANSAS IS SUBJECT TO A NESTAR EASEMENT RECORDED AS FILM 518, PAGE 730.



1" = 100'

- SURVEY MARKER LEGEND**
- = 1/2" IRON PIPE (FOUND)
 - ⊙ = 3/4" IRON PIPE W/PEC CAP (FOUND)
 - X = CHISELED CROSS (FOUND)
 - V = CHISELED NOTCH (FOUND)
 - ⋄ = 1/2" REBAR (FOUND)
 - ⋄ = 5/8" REBAR (FOUND)
 - ⊗ = 1/2" REBAR W/RAB CAP (FOUND)
 - = 5/8" REBAR W/RAB CAP (SET)

BENCH MARK: COW BENCHMARK AT GREENWICH AND LINCOLN, NORTHWEST CORNER OF DOUBLE 4'x8' RCDB, ON HUBBARD, IN FRONT OF 330 S. GREENWICH, ELEV.=1334.02 (NGVD)



Ruggles & Bohm, P.A.
Engineering, Surveying, Land Planning
924 North Main
Wichita, Kansas 67203
www.rbkansas.com
(316) 264-8008
(316) 264-4621 fax
E-mail: info@rbkansas.com

DWG FILE: 2422P
PROJECT NO. 2422P
MARCH 18, 2004

58-00-05-05