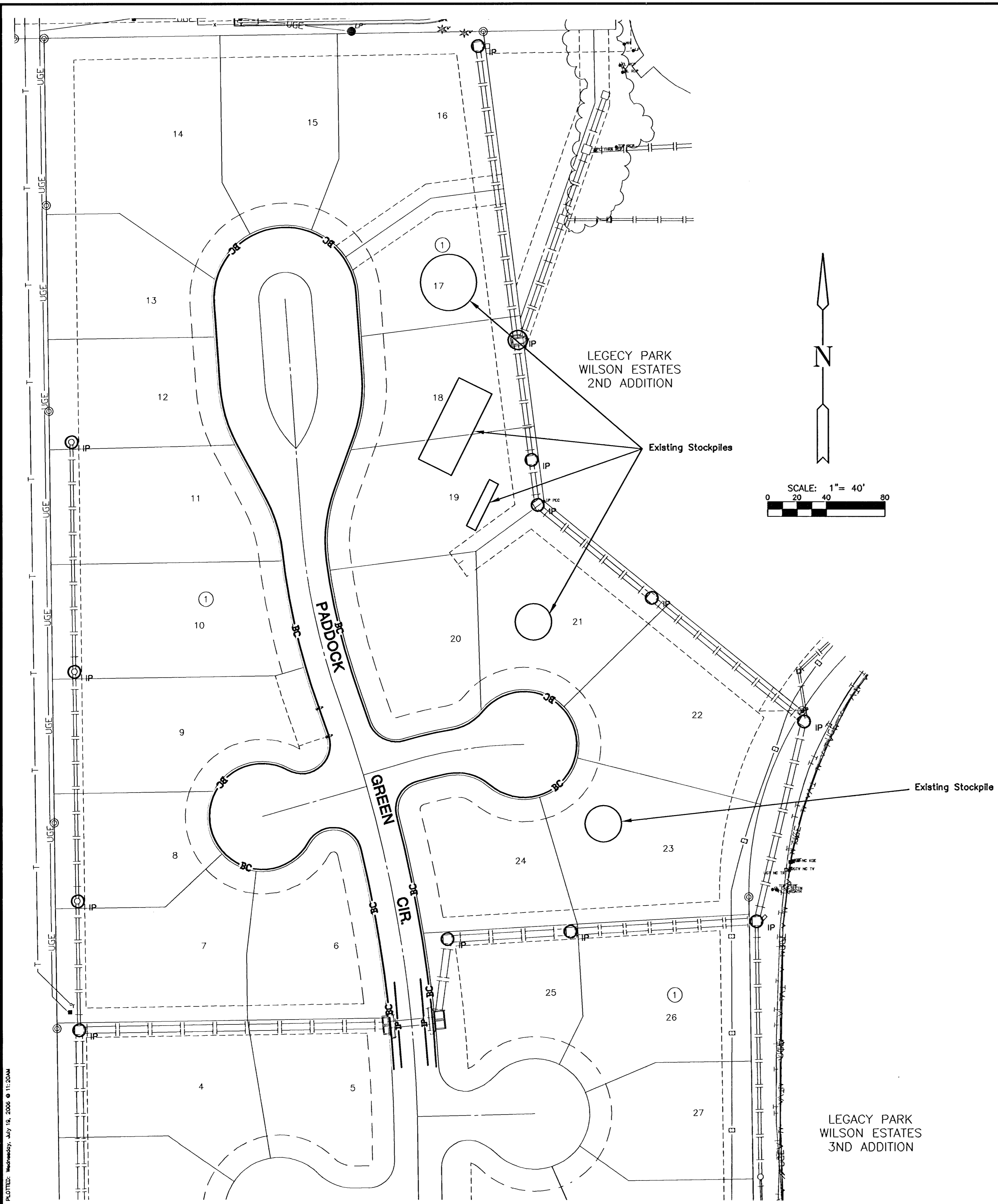
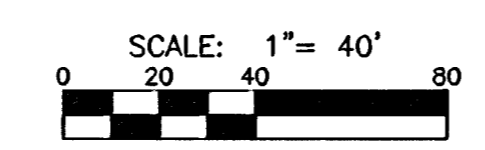
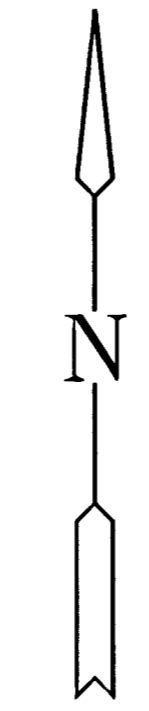


1. Mass grading has been completed by others. The paving contractor shall be responsible for stripping the area to be paved to a depth of 6" below bottom of rock subbase and reworking the subgrade to prepare the site for pavement.
2. Inlet protection is currently in place on the curb inlets in Paddock Green Circle and around the back yard inlets. Inlet protection shall be replaced.
3. Existing on site stockpiles may be used to complete any required fills on site.

LEGEND

- IP - AREA INLET PROTECTION
- IP — CURB INLET PROTECTION
- BC — BACK OF CURB PROTECTION
- V —
- T —
- 200 —



PAVING PLANS - PHASE II
BRIGHTON COURTS ADDITION
WICHITA, KANSAS

EROSION MAP
SHEET TITLE
PROJECT NUMBER
472-83817

DESIGN BY
SRS
DRAWN BY
DCJ
CHECKED BY
GJA

ISSUED
JULY 2006
REVISED

SHEET NO.
10 of 24