

# PLAN AND PROFILE OF PROPOSED 151ST STREET WEST IMPROVEMENTS FROM 1/2 MILE NORTH OF KELLOGG TO MAPLE

CITY OF WICHITA  
SEDGWICK COUNTY, KANSAS

**PROJECT NO. 472-84318**

JIM ARMOUR, P.E. - CITY ENGINEER

**CONSTRUCTION OCA #706939**

## GENERAL NOTES

UNLESS SHOWN OR STATED OTHERWISE ON THESE DRAWINGS, MATERIALS AND CONSTRUCTION SHALL BE IN ACCORDANCE WITH CITY OF WICHITA CONCRETE PAVEMENT AND ASPHALTIC CONCRETE PAVEMENT SPECIFICATIONS.

CONTRACTOR WILL BE REQUIRED TO PROVIDE A MINIMUM ADVANCE NOTICE OF SEVENTY-TWO (72) HOURS TO UTILITY COMPANIES PRIOR TO STARTING ANY EXCAVATION AS FOLLOWS:

KANSAS ONE-CALL 1-800-344-7233  
OR 687-2470 (LOCAL WICHITA)

THE CONTRACTOR MUST NOTIFY THE FOLLOWING IN CASE OF AN EMERGENCY:

SBC (TELEPHONE)	(800) 870-8390
COX COMMUNICATIONS (CABLE)	262-0661
WESTAR (ELECTRIC)	383-8600
KANSAS GAS SERVICE (GAS)	832-3101
AQUILA (GAS)	946-0096
CONOCO PHILLIPS (GAS)	(580) 716-4582
EMBRIDGE PIPELINE (GAS)	(701) 857-0800
ONEOK (GAS) (SUPERIOR ENERGY)	831-9020
CITY OF WICHITA WATER & SEWER MAINT.	262-6000
RURAL WATER DISTRICT NO. 4	796-1100

THE CONTRACTOR SHALL BE RESPONSIBLE FOR PRESERVING PROPERTY IRONS. THE CONTRACTOR WILL BE REQUIRED TO RE-ESTABLISH ANY PROPERTY IRONS WHICH ARE DAMAGED OR DESTROYED BY HIS CONSTRUCTION OPERATIONS. SUCH IRONS SHALL BE RE-ESTABLISHED BY A LICENSED LAND SURVEYOR IN ACCORDANCE WITH STATE LAWS.

EXISTING UTILITIES AND THEIR LOCATIONS, AS SHOWN ON THE PLANS REPRESENT THE BEST INFORMATION OBTAINABLE FOR DESIGN. LOCATION INFORMATION HAS BEEN OBTAINED FROM THE VARIOUS UTILITY COMPANIES AND IS EITHER FROM COMPANY RECORD DRAWINGS OR COMPANY PROVIDED FIELD LOCATIONS. THE PLAN LOCATIONS SHOWN ARE NOT GUARANTEED. ADDITIONAL EXISTING UTILITIES MAY ALSO BE ENCOUNTERED.

RUBBLE FROM THE REMOVAL OF MISCELLANEOUS STRUCTURES AND EXCESS EXCAVATION WHICH IS TO BE WASTED SHALL BE DISPOSED OF ON SITES TO BE PROVIDED BY THE CONTRACTOR. THESE SITES SHALL BE APPROVED BY THE ENGINEER AS TO SUITABILITY, APPEARANCE AND SITE LOCATION. LOCATIONS THAT, IN THE OPINION OF THE ENGINEER, WILL LEAVE AN UNSIGHTLY APPEARANCE WILL NOT BE APPROVED. ALL DISPOSAL SITES MUST BE APPROVED BY THE KANSAS DEPARTMENT OF HEALTH AND ENVIRONMENT. MATERIAL EITHER STOCKPILED OR DISPOSED OF IN A FLOOD PLAIN WOULD REQUIRE A KANSAS STATE BOARD OF AGRICULTURE PERMIT. ANY MATERIAL DUMPED IN WATERS OF THE UNITED STATES OR WETLANDS IS SUBJECT TO U.S. CORPS OF ENGINEERS PERMITTING REGULATIONS. ANY MATERIAL BURIED OR STOCKPILED BEYOND APPROVED CONSTRUCTION LIMITS WOULD REQUIRE ADDITIONAL ARCHAEOLOGICAL INVESTIGATIONS UNLESS BURIED IN A PREVIOUSLY APPROVED BORROW LOCATION.

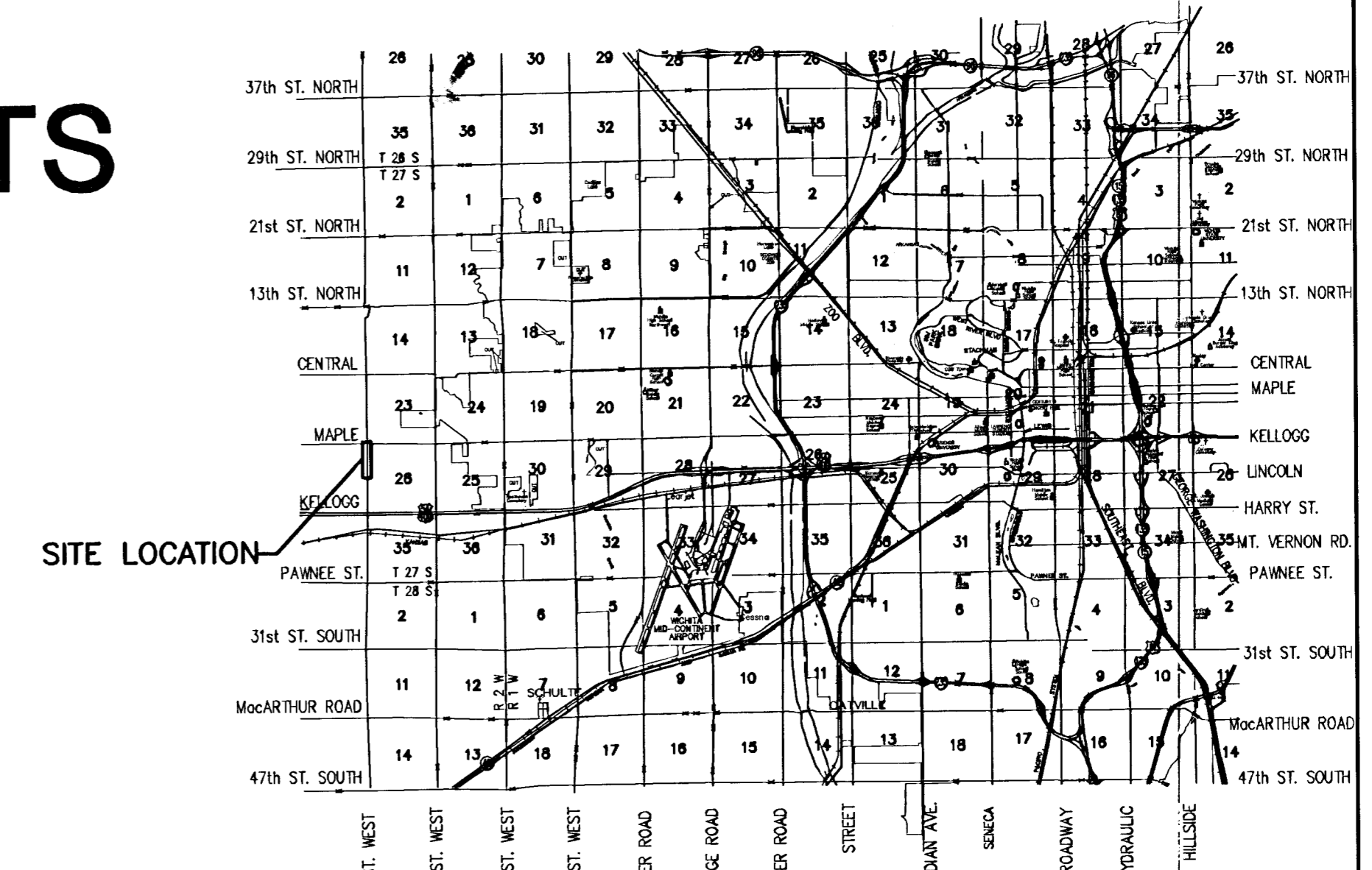
CONTRACTOR SHALL SEED ALL DISTURBED AREAS IN LIKE KIND. CONTRACTOR SHALL INSTALL CURLEX 1 EXCELSIOR BLANKET WHERE REGRADING HAS BEEN DONE AS SHOWN ON SHEET 7. COST SHALL BE CONSIDERED SUBSIDIARY TO SITE RESTORATION.

ALL TREES TO BE REMOVED ARE MARKED  $\otimes$ . COSTS SHALL BE PAID AS SITE CLEARING AND RESTORATION.

ELEVATIONS ARE IN CITY OF WICHITA DATUM.

ALL GRAVEL OR OTHER SIMILAR DEBRIS LARGER THAN 1/2 INCH IN DIAMETER SHALL BE RAKED UP AND REMOVED DURING FINAL GRADE PREPARATION.

"REMOVE AND REPLACE MAILBOX" WILL CONSIST OF TEMPORARILY RELOCATING THE MAILBOX AS REQUIRED FOR PROJECT GRADING AND PERMANENTLY RE-INSTALLING THE MAILBOX AT ITS ORIGINAL LOCATION AFTER GRADING. IN NO INSTANCE SHALL MAIL SERVICE BE DISRUPTED.



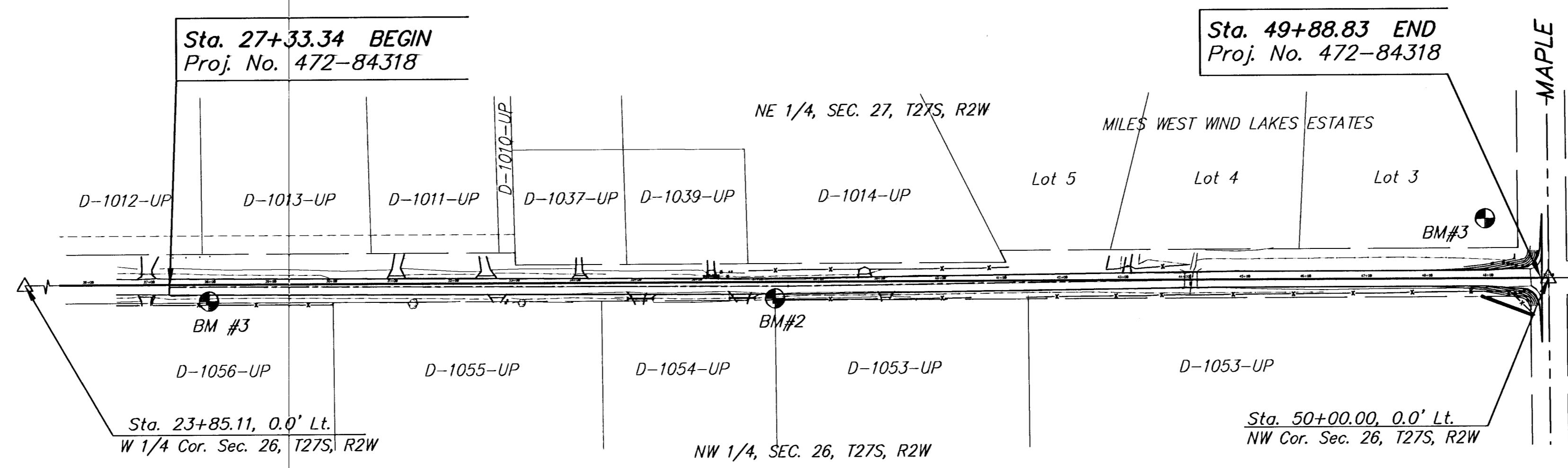
LOCATION MAP

## INDEX TO DRAWINGS

SHEET NO	DESCRIPTION
1	TITLE SHEET
2	TYPICAL SECTIONS
3-6	PLAN & PROFILE SHEETS
7	EROSION CONTROL PLAN AND DETAILS
8-11	TRAFFIC CONTROL PLAN AND DETAILS
12-18	CROSS SECTIONS

## BENCHMARK

- BM#1 Step spike in west face of power pole southwest corner 151st St. West and Maple Street.  
Elev. = 203.96 (COW Datum)
- BM#2 Railroad spike in west face of first power pole on east side of 151st St. West, approx. 1290' south of 151st St. West and Maple intersection.  
Elev. = 219.36 (COW Datum)
- BM#3 Railroad spike in west face of power pole on the east side of 151st St. West approx. 263' north of end of pavement or 2210' south of 151st St. West and Maple intersection.  
Elev. = 222.96 (COW Datum)




## RECAPITULATION OF QUANTITIES

ITEM	QUANTITY	UNIT
Site Clearing	1	L.S.
Excavation	1,050	C.Y.
Compacted Fill	1,600	C.Y.
Reinforced Crushed Rock Base (5")	7,230	S.Y.
Asphalt Pavement, 6" (4" Bit. Base)	6,724	S.Y.
Aggregate Surfacing (AB-3)	128	S.Y.
Traffic Control	1	L.S.
Pavement Marking	1	L.S.
12" E.P. CMP	76	L.F.
15" E.P. CMP	20	L.F.
12" E.P. End Sections	4	EACH
15" E.P. End Sections	2	EACH
BMP - Ditch Check	1	L.S.
Remove and Replace Mailbox	4	EACH
Signing	1	L.S.
Site Restoration	1	L.S.
Mobilization	1	L.S.



J:\Civil\05746\dwg\Title\05746ET.dwg 04/25/2006 02:35:07 PM CST



**MKEC**  
ENGINEERING  
CONSULTANTS

411 N. WEBB ROAD  
WICHITA, KS. 67206  
316-684-9600

**151ST STREET WEST IMPROVEMENTS**  
**1/2 MILE NORTH OF KELLOGG TO MAPLE**

PROJECT NAME

**TITLE SHEET**

SHEET TITLE

JRA DESIGN BY. DPG DRAWN BY. JRA CHECKED BY.

APRIL 2006 DATE 05746 JOB NO. 1 / 18 SHEET/OF